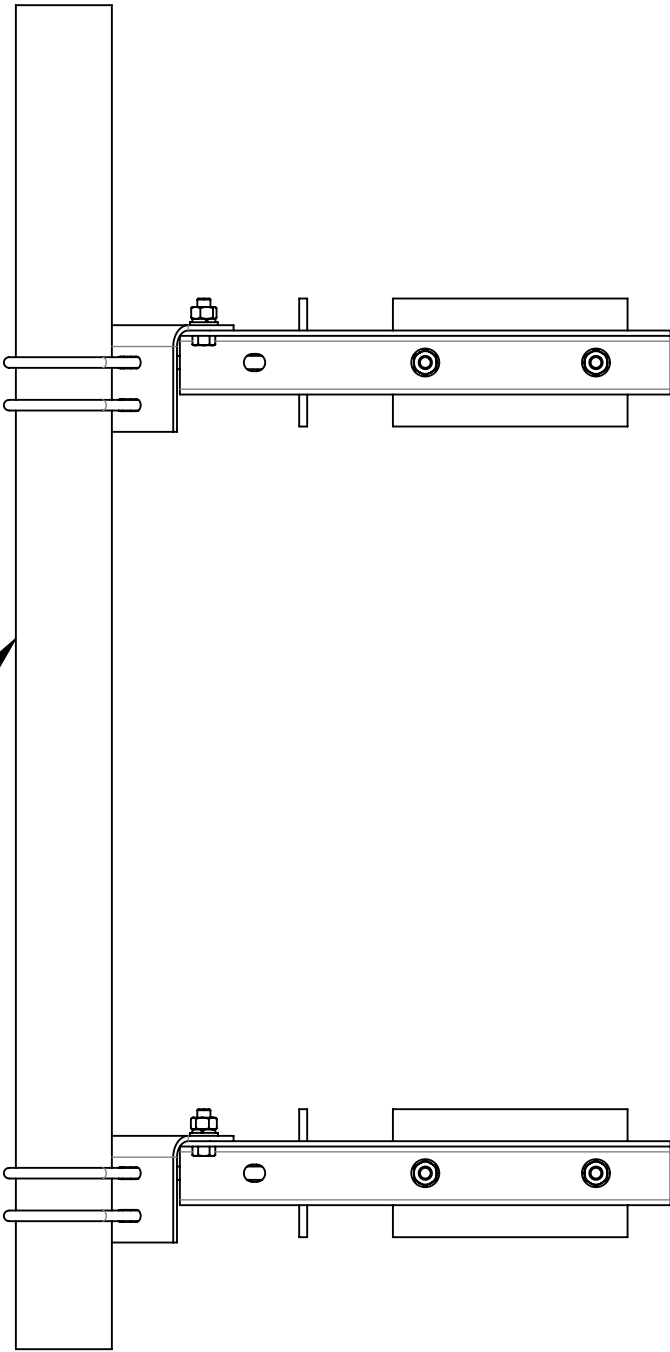
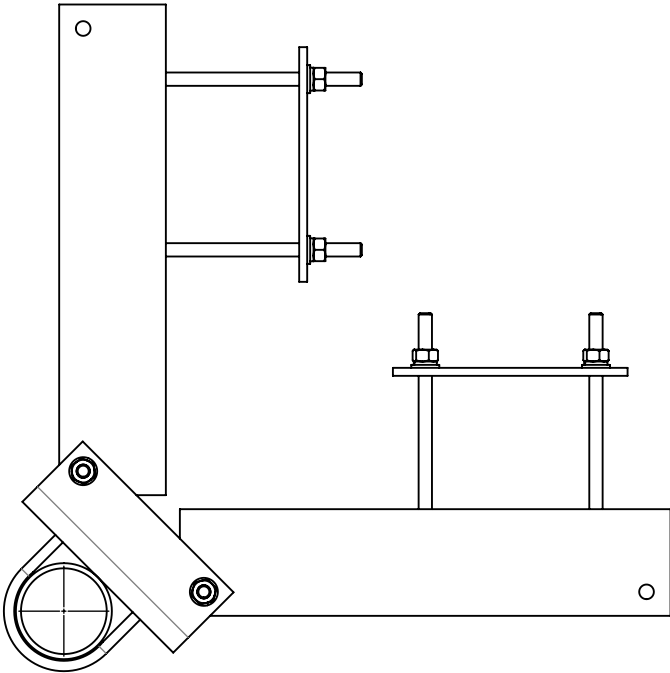


1.0 GENERAL NOTES
1.1 ALL METRIC DIMENSIONS ARE IN BRACKETS [X. X]
1.2 FOR PATENT INFO: <https://www.adwpat.com>
2.0 DESIGN NOTES
2.1 ANY HAZARDS OR OBSTRUCTIONS TO THE CLIMBING FACILITY AND SAFETY CLIMB MUST BE IDENTIFIED PRIOR TO INSTALLING THE APPURTENANCE. ADDITIONAL PRODUCTS MAY BE REQUIRED TO MAINTAIN THE INTEGRITY OF THE SAFETY CLIMB. DURING INSTALLATION, TEMPORARY AND/OR PERMANENT PRECAUTIONARY MEASURES SHOULD BE TAKEN TO PRESERVE THE CLIMBING FACILITY AND/OR SAFETY CLIMB.
3.0 MANUFACTURING/SPECIAL REQUIREMENTS
3.1 TIGHTEN ALL BOLTS SECURING FLAT PLATES BY THE TURN-OF-NUT METHOD. TIGHTEN ALL U-BOLTS USING TURN-OF-NUT METHOD WITH ATTENTION TO LEAVE EQUAL DISTANCE AND EQUAL FORCE ON EACH LEG OF THE U-BOLT.
4.0 TEST
5.0 PACKAGING
5.1 PACKAGING SHALL MEET ANDREW REQUIREMENTS PER DOCUMENT IS-PL-3005
5.2 PRINTED DOCUMENT TO BE PLACED INSIDE POLYBAG AND THEN IN SHIPPING CONTAINER
5.3 EXTRA HARDWARE MAY BE SUPPLIED, BAGGED AND SHIPPED

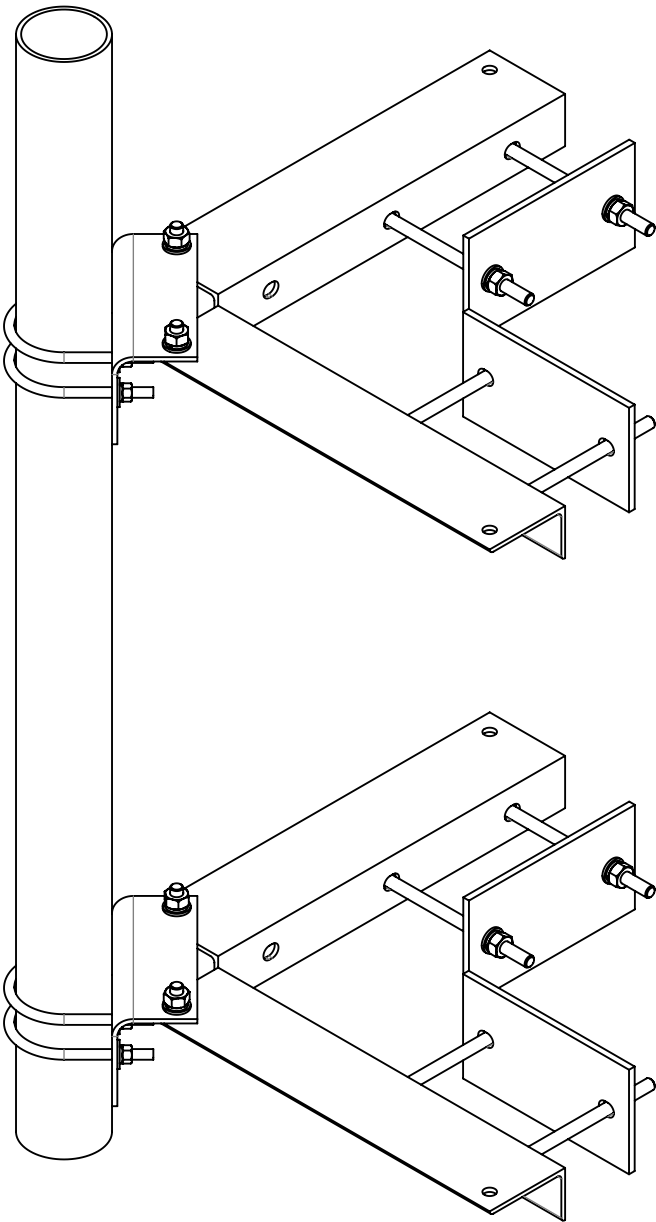
PART NUMBERS, WEIGHTS

TABLE 1: CONFIGURATIONS										
		INCLUDED PARTS								
PART NUMBER	WEIGHT (LBS)	CWM4H	CWM3H	CWM2H	MT-653-63	MT-654-96	MT54760	MT54796	MT-650-63	MT-651-96
CW-M4-63	161.93 LBS	1	-	-	1	-	-	-	-	-
CW-M4-96	192.58 LBS	1	-	-	-	1	-	-	-	-
CW-M3-60	134.46 LBS	-	1	-	-	-	1	-	-	-
CW-M3-96	152.66 LBS	-	1	-	-	-	-	1	-	-
CW-M2-63	118.80 LBS	-	-	1	-	-	-	-	1	-
CW-M2-96	126.80 LBS	-	-	1	-	-	-	-	-	1






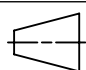


PIPE: Ø 2.375" OD OR Ø 3.5" OD OR Ø 4.5" OD
(SEE TABLE 1)

REVISIONS			
REV.	DESCRIPTION	DATE	APPROVED
A	INITIAL RELEASE	AW 20DEC04	TP
B	UPDATE PART LIST	ACG 15AUG06	TP
C	UPDATE SERIES TABLE	MSM 09NOV09	TP
D	UPDATED BOM	MSM 13JUL10	TP
E	UPDATED GWF-05A (ITEM 7) WAS GWF-05 & GN-05A (ITEM 8) WAS GN-05	LS1146 06MAY24	BCROSS 40194579CMO
F	SIMPLIFIED SERIES DRAWING;UPDATED DRAWING FORMAT TO NEW	LL1090 18AUG25	BA1025 50104476AMO



CW-M4-63 SHOWN FOR REFERENCE
(SEE TABLE 1 FOR ALL CONFIGURATIONS)

<div>ANDREW[®] an Amphenol company</div>																	
TOLERANCES						SAP MATERIAL MASTER											
1 PLACE .X[X] ± 0.12[3.0]			3 PLACE .XXX[X] ± 0.03[0.8]			SEE TABLE 1											
2 PLACE .XX[X] ± 0.06[1.5]			ANGLES ± 2°														
FINISH					MATERIAL												
UNLESS OTHERWISE SPECIFIED DIMENSIONS ARE IN INCHES INTERPRET PER ANSI Y 14.5M-1994		NAME		DATE		CORNER WALL MOUNT											
	CE	AW		20DEC04													
	RW	LL1090		08/20/2025													
																	
	AD	YMENG		08/21/2025													
	RE	YMENG		08/21/2025													
	ECN 50104476AMO					SCALE 1:12		DOCUMENT NO. CW-M SERIES									
	SIZE		Auth Group		INSL		MODEL			DRAWING			SHEET				
C						VERSION		STATUS		REVISION		VERSION		STATUS		REVISION	
						02		RE		F		02		RE		F	
1 OF 1																	

DENSITY	lbs/in³
MASS	lbs
VOLUME	in³
SURFACE AREA	in²
HEIGHT	
LENGTH	
WIDTH	

Confidential