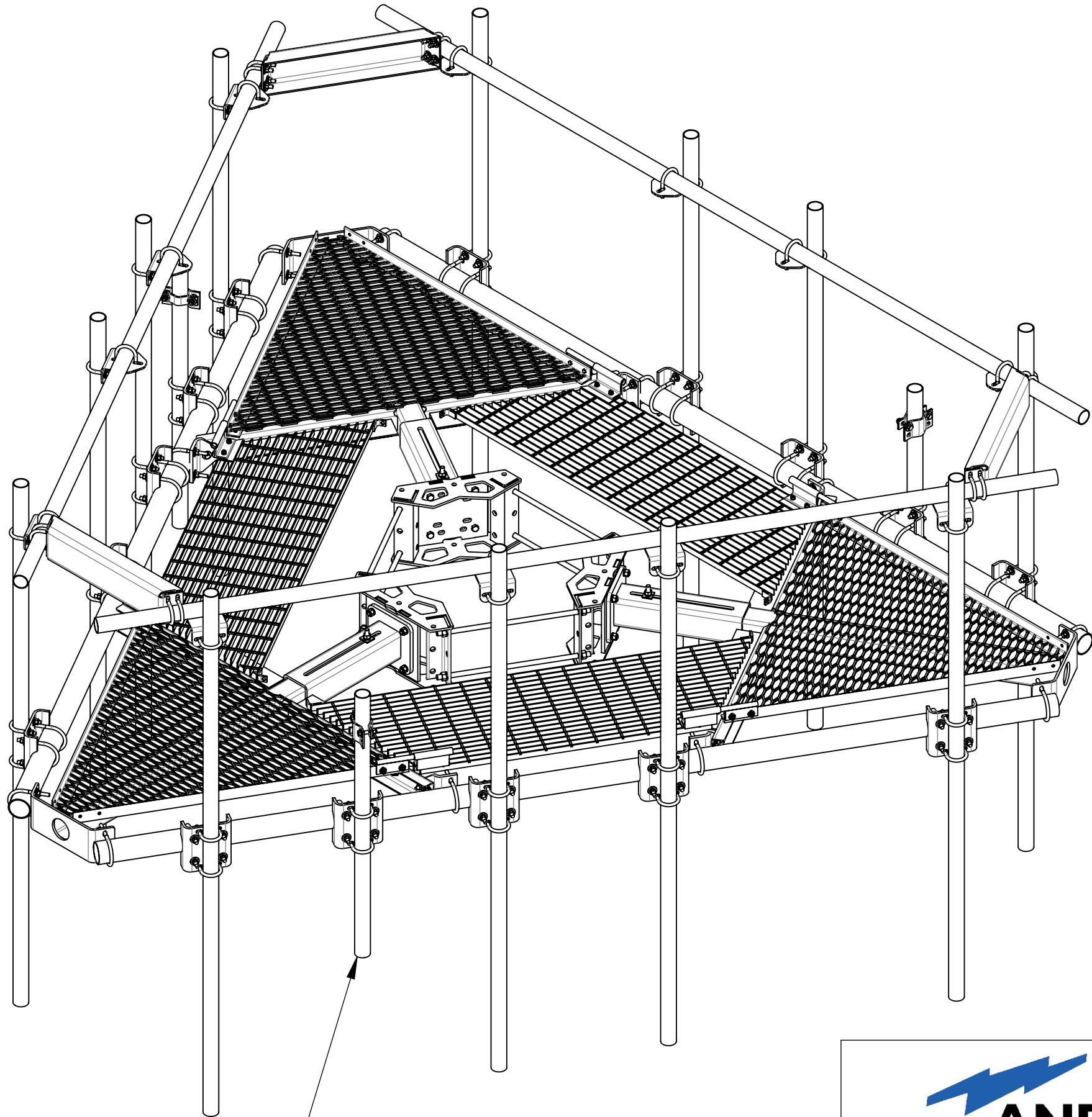




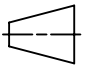
- 4
- 3
- 2
- 1
- 1.0 GENERAL NOTES
- 1.1 ALL METRIC DIMENSIONS ARE IN BRACKETS [X.X]
- 1.2 FOR PATENT INFO: <https://www.adwpat.com>
- 2.0 DESIGN NOTES
- 2.1 ANY HAZARDS OR OBSTRUCTIONS TO THE CLIMBING FACILITY AND SAFETY CLIMB MUST BE IDENTIFIED PRIOR TO INSTALLING THE APPURTENANCE. ADDITIONAL PRODUCTS MAY BE REQUIRED TO MAINTAIN THE INTEGRITY OF THE SAFETY CLIMB. DURING INSTALLATION, TEMPORARY AND/OR PERMANENT PRECAUTIONARY MEASURES SHOULD BE TAKEN TO PRESERVE THE CLIMBING FACILITY AND/OR SAFETY CLIMB.
- 2.2 FITS MONOPOLES 10"-30" O.D.
- 2.3 POSITION MOUNT OR ADJUST SAFETY CLIMB CABLE SO NOT TO HINDER OR DAMAGE OR OBSTRUCT THE SAFETY CLIMB. SAFETY CABLE ROUTING BRACKET MAY BE PURCHASED SEPARATELY.
- 3.0 MANUFACTURING/SPECIAL REQUIREMENTS
- 3.1 TIGHTEN ALL BOLTS SECURING FLAT PLATES BY THE TURN-OF-NUT METHOD. TIGHTEN ALL U-BOLTS USING TURN-OF-NUT METHOD WITH ATTENTION TO LEAVE EQUAL DISTANCE AND EQUAL FORCE ON EACH LEG OF THE U-BOLT.
- 4.0 TEST
- 5.0 PACKAGING
- 5.1 PACKAGING SHALL MEET ANDREW REQUIREMENTS PER DOCUMENT IS-PL-3005
- 5.2 PRINTED DOCUMENT TO BE PLACED INSIDE POLYBAG AND THEN IN SHIPPING CONTAINER
- 5.3 EXTRA HARDWARE MAY BE SUPPLIED, BAGGED AND SHIPPED



THREE MT-650 PIPES ARE NOT INCLUDED IN EPA DATA.

A			
REV.	DESCRIPTION	DATE	APPROVED
A	INITIAL RELEASE	ADW 10/12/2015	8000010605
B	UPDATED DRAWING TO NEW FORMAT; CORRECTED DRAWING AND BOM PER NEW STRUCTURE	RY1002 13JUL23	CB1094 40175120CMO
C	MTC300618 WAS MT19617; GB-04205 WAS GB-04145	RY1002 07MAY25	BA1025 50102553AMO
D	EXPANDED XP-2020 BOM ON DRAWING	RY1002 04AUG25	BA1025 50104162AMO

**ANDREW**[®] an Amphenol company

TOLERANCES		SAP MATERIAL MASTER						
0 PLACE .XX[X] ± 0.25[6.3]	2 PLACE .XX[X] ± 0.06[1.5]	MTC3792U						
1 PLACE .X[X] ± 0.12[3.0]	ANGLES ± 2°							
FINISH		MATERIAL						
UNLESS OTHERWISE SPECIFIED DIMENSIONS ARE IN INCHES INTERPRET PER ANSI Y 14.5M-1994	NAME	DATE	10-30 FULL GRATING, CO-LO PLATFORM					
	CE ADW	10/12/15						
	RW RY1002	08/04/2025						
	AD BA1025	08/05/2025	SCALE 1:18	DOCUMENT NO. MTC3792U				
	RE YMENG	08/05/2025						
	ECN 50104162AMO							
SIZE	Auth Group	INSL	MODEL		DRAWING			SHEET 1 OF 7
C			VERSION 02	STATUS RE	REVISION C	VERSION 02	STATUS RE	

DENSITY		lbs/in³
MASS	2037.70	lbs
VOLUME	7865.52	in³
SURFACE AREA	81216.39	in²
HEIGHT	96.0[2438]	
LENGTH	169.5[4304]	
WIDTH	152.4[3871.5]	

Confidential

PART NUMBERS, WEIGHTS, & EPA

TABLE 1: CONFIGURATIONS

PART NUMBER	DESCRIPTION	WEIGHT (LBS)	(EPA)A (FT^2)*		(EPA)A 1/2" ICE THICKNESS (FT^2)*		ANTENNA PIPES	INCLUDED PARTS		
			MIN	MAX	MIN	MAX		MTC3397UB1	MTC3792USB	MTC3792UHK
MTC3792U	10-30 FULL GRATING, CO-LO PLATFORM	2037.70	27.95	28.37	34.36	34.89	12	1	1	1

* (EPA)A DOES NOT INCLUDE ANTENNA PIPES AND MOUNTING HARDWARE. IF DESIRED, ADD ANTENNA PIPE PER TABLE 2

TABLE 2: EPA OF EACH ANTENNA PIPE

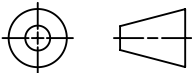
ANTENNA PIPE	(EPA)A (FT^2)*	(EPA)A W/ 1/2" ICE THICKNESS (FT^2)*
2-3/8" X 96"	1.52	2.16

NOTE:
1. ANTENNA PIPES ARE CONSIDERED SEPARATELY.
2. KA FACTOR OF 3-SECTOR EPA INCLUDED.
3. COMBINE THE ASSOCIATED EPA VALUES IN THE TABLES ABOVE TO DETERMINE THE EPA OF A MOUNT MODEL WITH A LISTED MOUNT PIPE CONFIGURATION.
FOR EXAMPLE, THE MAXIMUM OF MTC3792U HAS A 3-SECTOR EPA OF 28.37 FT2 WITH NO ICE PLUS 12 ANTENNA PIPES WITH A 3-SECTOR EPA OF 12X1.52=18.24 FT2 WITH NO ICE.
SO, THE TOTAL EPA OF 46.61 FT2 FOR THE MAXIMUM OF MTC3792U.



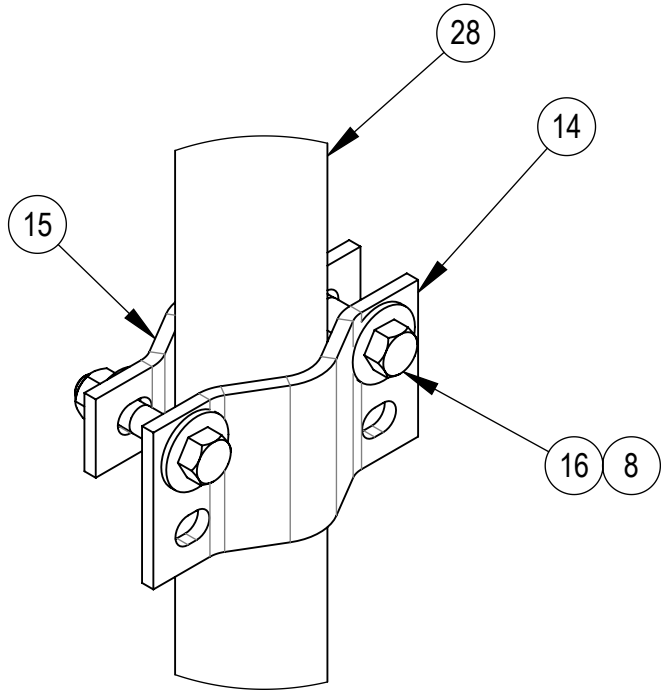
TITLE
10-30 FULL GRATING, CO-LO PLATFORM

SIZE C	SCALE 1:1	DOCUMENT NO. MTC3792U
------------------	---------------------	---------------------------------

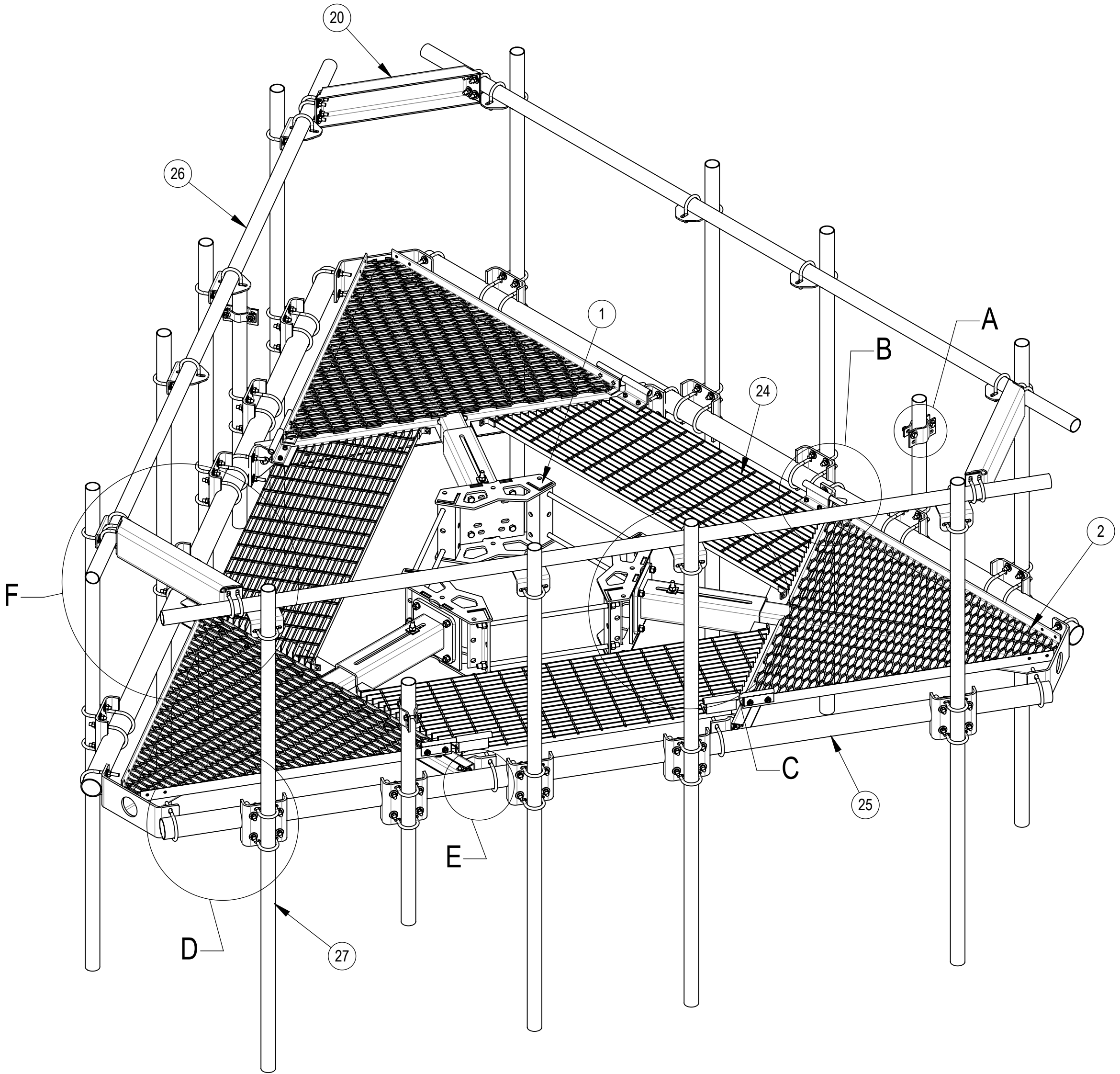


DRAWING			SHEET 2 OF 7
VERSION	STATUS	REVISION	
02	RE	D	

Confidential




DETAIL A
SCALE 1 : 3



COMPONENT PART NUMBERS PROVIDED FOR ASSEMBLY PURPOSES;
INDIVIDUAL COMPONENTS MAY BE SHIPPED AS PARTS WITHIN AN INCLUDED KIT

ITEM	PART NO.	DESCRIPTION	QTY.	WEIGHT	NOTE NO.
1	MC-RM1030-3	Ø 10" - Ø 30" RINGMOUNT	1	150.79 LBS	
2	MTC3397U01	PLATFORM TRIANGLE WELDMENT	3	150.90 LBS	
3	MTC339702	SLIDER BASE	3	46.28 LBS	
4	MTC300618	MOUNTING PLATE FOR MT-196	6	4.38 LBS	
5	GUB-4356	1/2" X 3-5/8" X 6" GALV U-BOLT	42	0.81 LBS	
6	GB-0520A	5/8" X 2" GALV BOLT KIT (A325)	12	0.26 LBS	
7	GB-04205	1/2" X 2" GALV BOLT KIT	12	0.16 LBS	
8	GWF-04	1/2" GALV FLAT WASHER	36	0.04 LBS	
9	MT389	WASHER, 1-1/2" X 1 5/8", 11/16" HOLE,SQ	6	0.11 LBS	
10	MT21701	PIPE MOUNT PLATE	15	7.93 LBS	
11	GUB-4240	1/2" X 2-1/2" X 4" GALV U-BOLT	66	0.56 LBS	
12	MTC339732	HINGE WELDMENT	6	2.00 LBS	
13	GB-03105	3/8" X 1" GALV BOLT KIT	24	0.05 LBS	
14	AC-P10D	ANTENNA CLAMP HALF, 1.5"- 3.5"	3	1.22 LBS	
15	ACP10	1.5" - 3.5" O.D. CLAMP HALF	3	0.61 LBS	
16	GB-04245	1/2" X 2-1/2" GALV BOLT KIT	6	0.18 LBS	
17	GB-0570A	5/8" X 7" GALV BOLT KIT A325	3	0.69 LBS	
18	MTC339742	HINGE ANGLE WLDMNT	6	1.87 LBS	
19	XAU01	ANGLE, CROSSOVER, 1.9-3.5" X 1.9-3.5" OD	12	2.98 LBS	
20	MT19525	CORNER WELDMENT FOR MT-195	3	22.11 LBS	
21	MTC339712	GRATING MOUNT	6	12.45 LBS	
22	GB-03125	3/8" X 1-1/4" GALV BOLT KIT	24	0.06 LBS	
23	GWF-03	3/8" GALV FLAT WASHER	36	0.01 LBS	
24	MTC339738	GRATING DOOR	3	61.76 LBS	
25	MT21601	PIPE, 3-1/2"OD X 150"	3	75.85 LBS	
26	MT-651-150	2.375" OD X 150" PIPE	3	36.34 LBS	
27	MT-651-96	2.375" OD X 96" PIPE	12	23.05 LBS	
28	MT-650	2.375" OD X 48" PIPE	3	11.63 LBS	

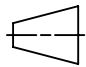
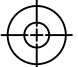
**ANDREW**[®] an Amphenol company

TITLE
10-30 FULL GRATING, CO-LO PLATFORM

SIZE
C

SCALE
1:15

DOCUMENT NO.
MTC3792U



DRAWING		
VERSION	STATUS	REVISION
02	RE	D

SHEET
3 OF 7

Confidential

4

3

2

1

D

D

C

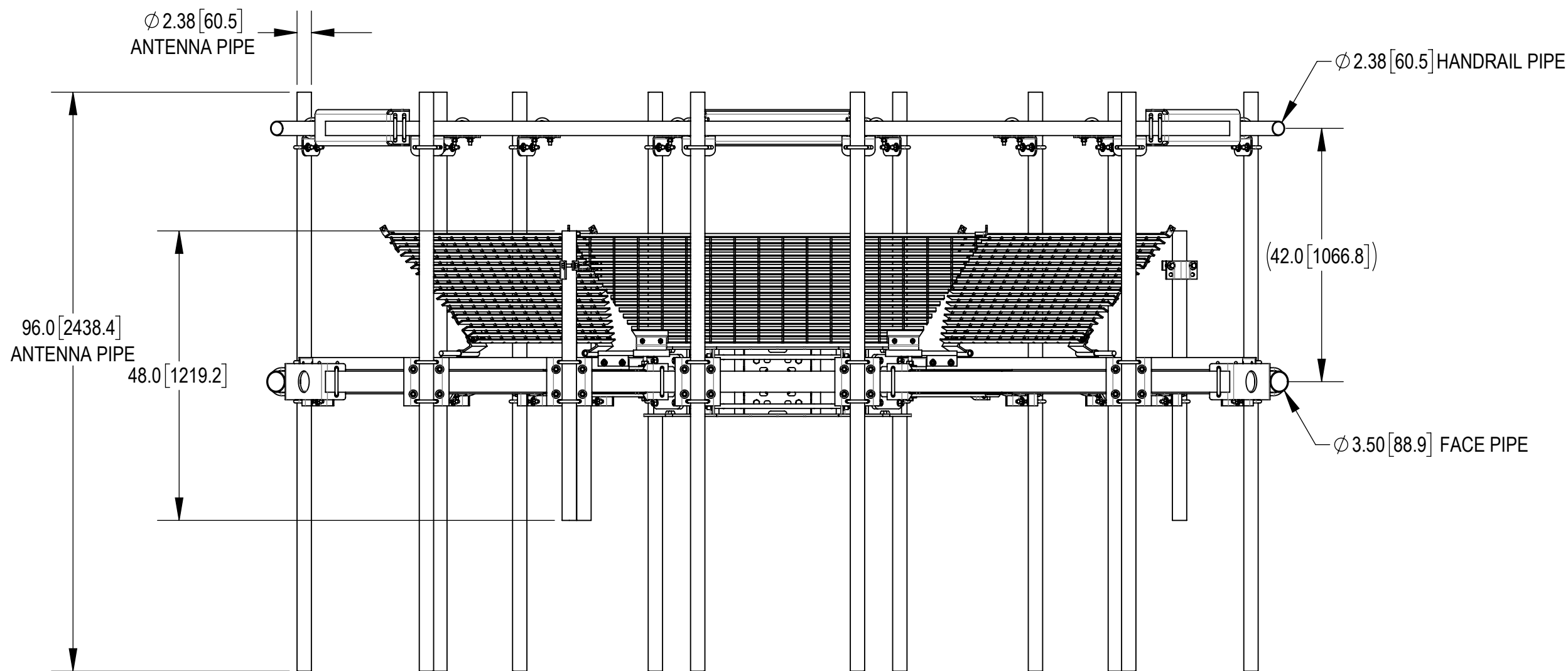
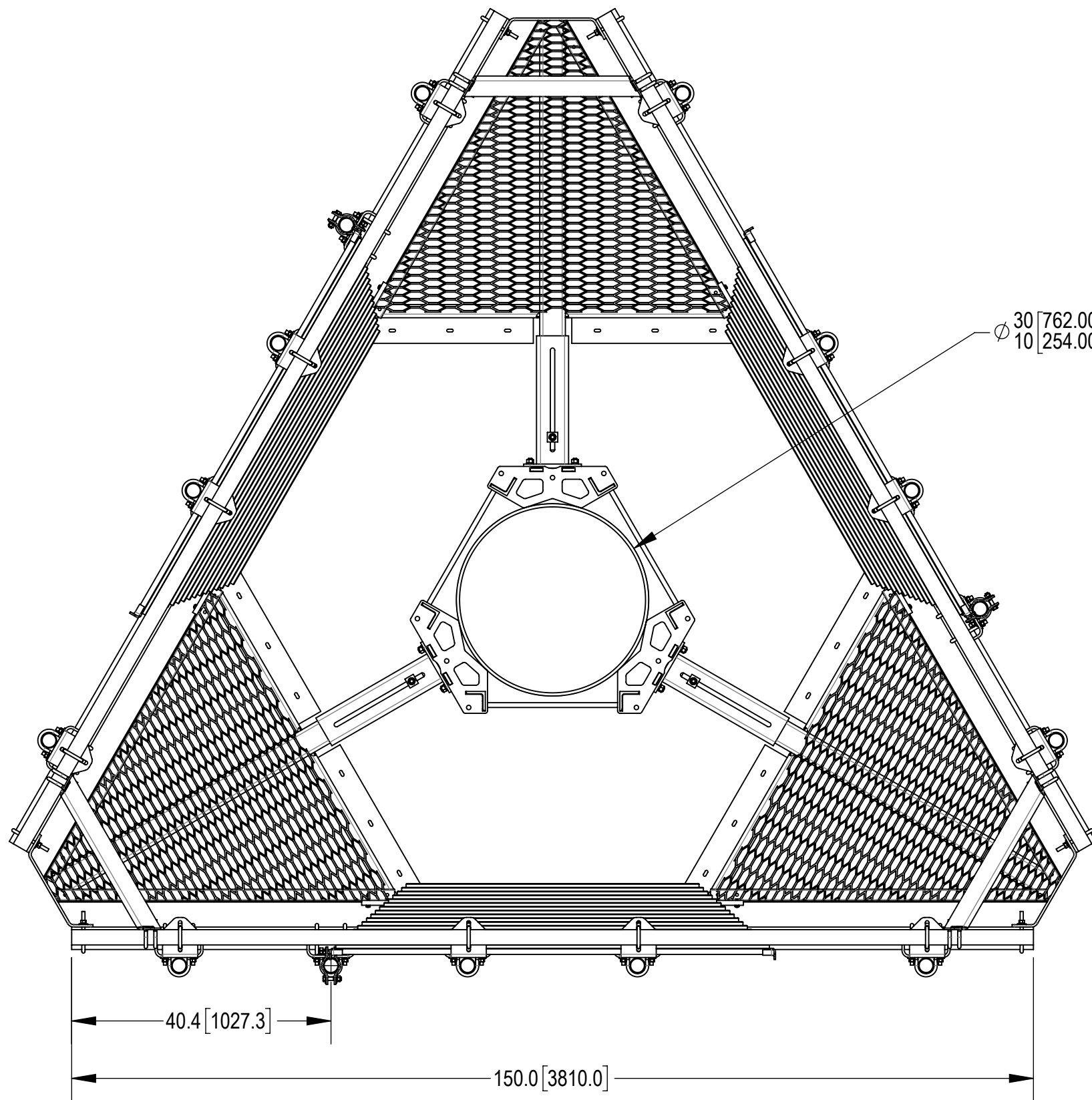
C

B


B

A

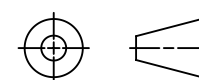
A



TITLE
10-30 FULL GRATING, CO-LO PLATFORM

SIZE C	SCALE 1:20	DOCUMENT NO. MTC3792U			SHEET 4 OF 7
		DRAWING			
		VERSION	STATUS	REVISION	
		02	RE	D	

Confidential



4

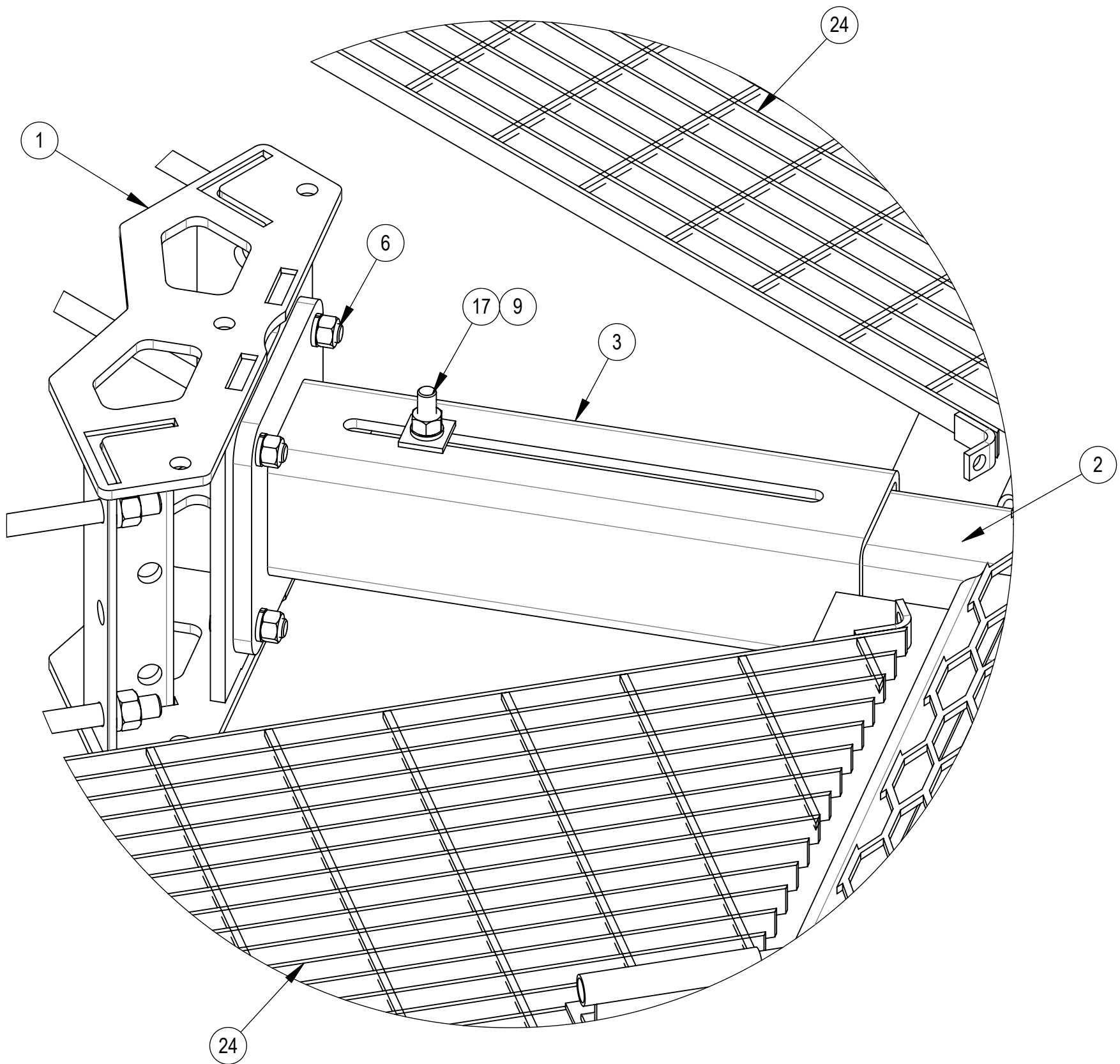
3

2

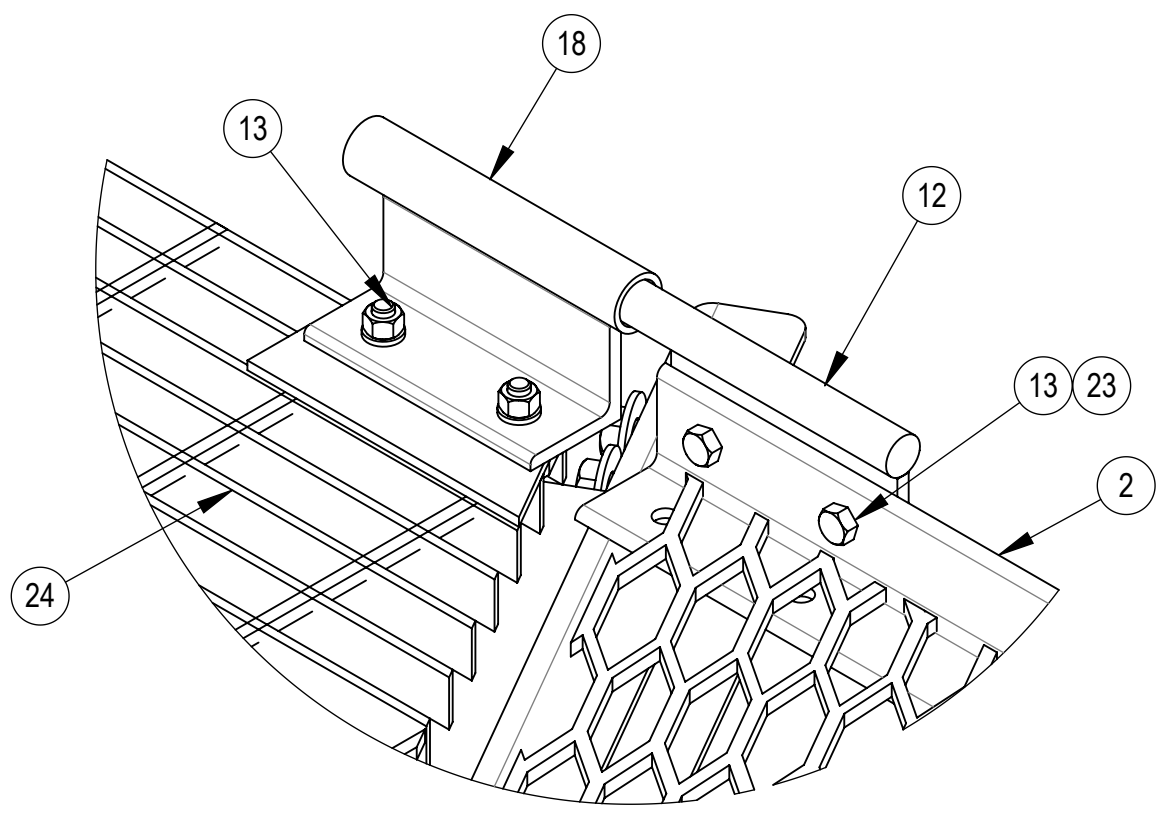
1

NOTES

1.0 SOME PARTS HIDDEN FOR CLARITY



DETAIL C



DETAIL B
SCALE 1 : 3



TITLE
10-30 FULL GRATING, CO-LO PLATFORM

SIZE C	SCALE 1:4	DOCUMENT NO. MTC3792U
------------------	---------------------	---------------------------------



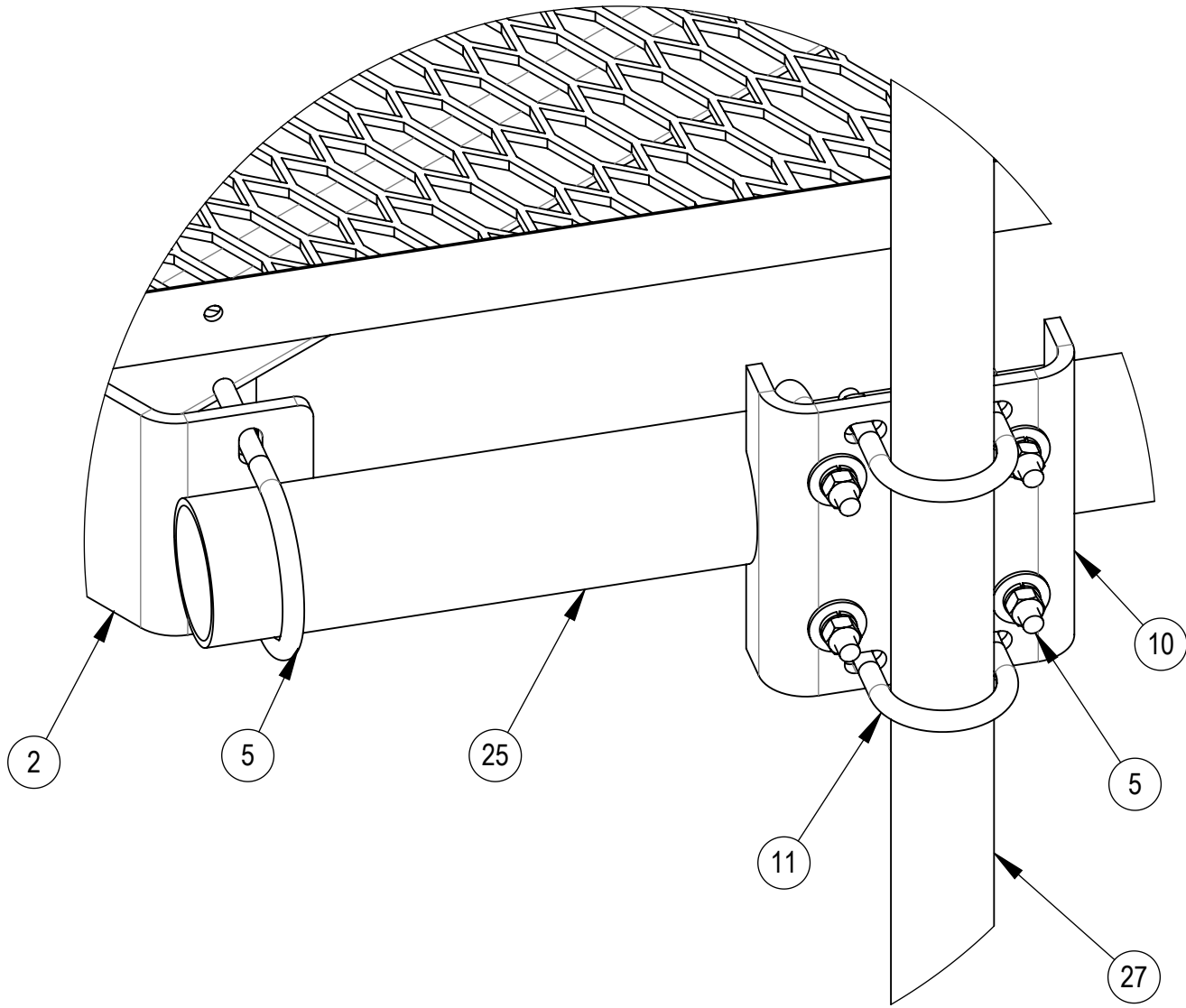
DRAWING		
VERSION	STATUS	REVISION
02	RE	D

SHEET
5 OF 7

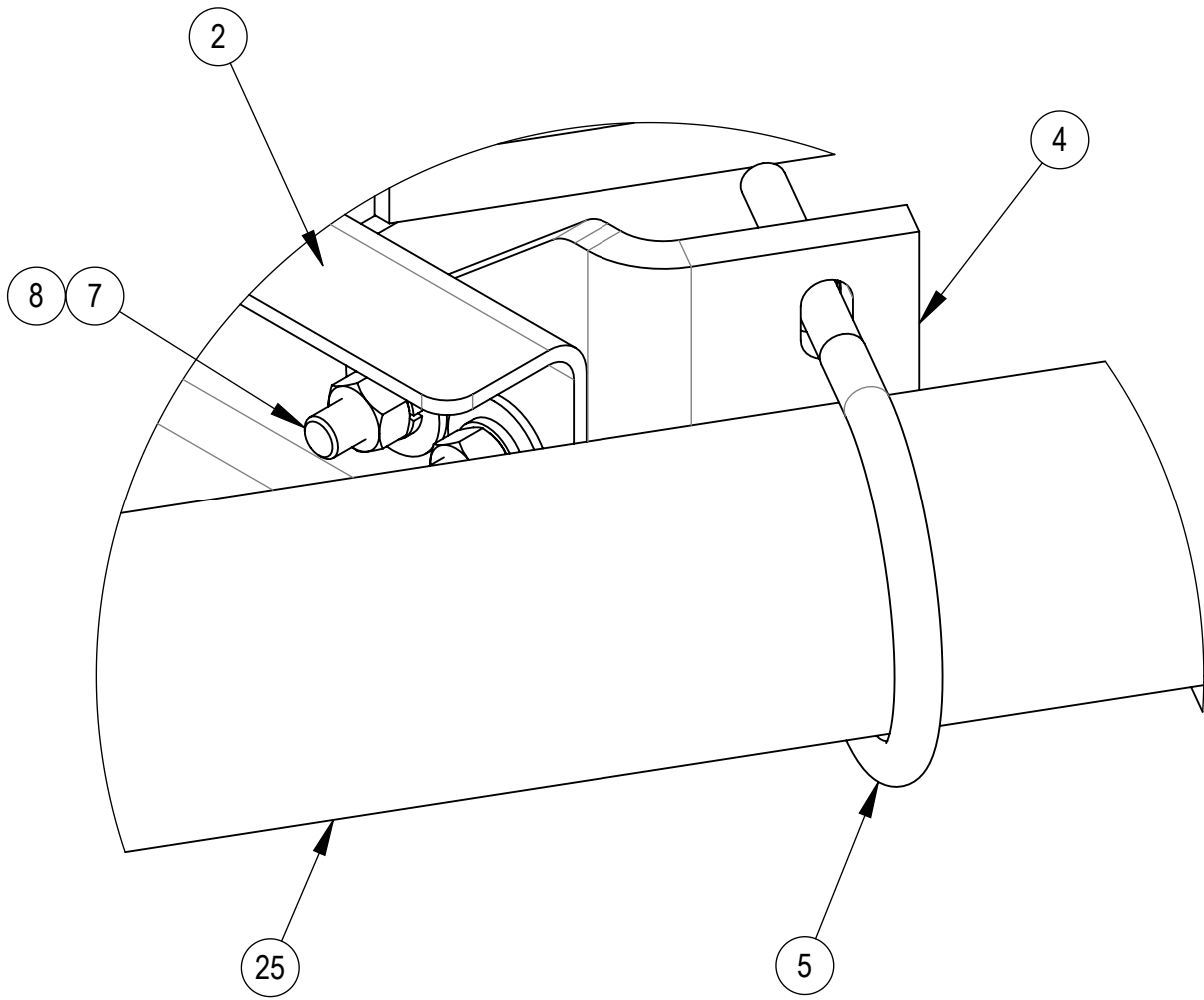
Confidential

NOTES

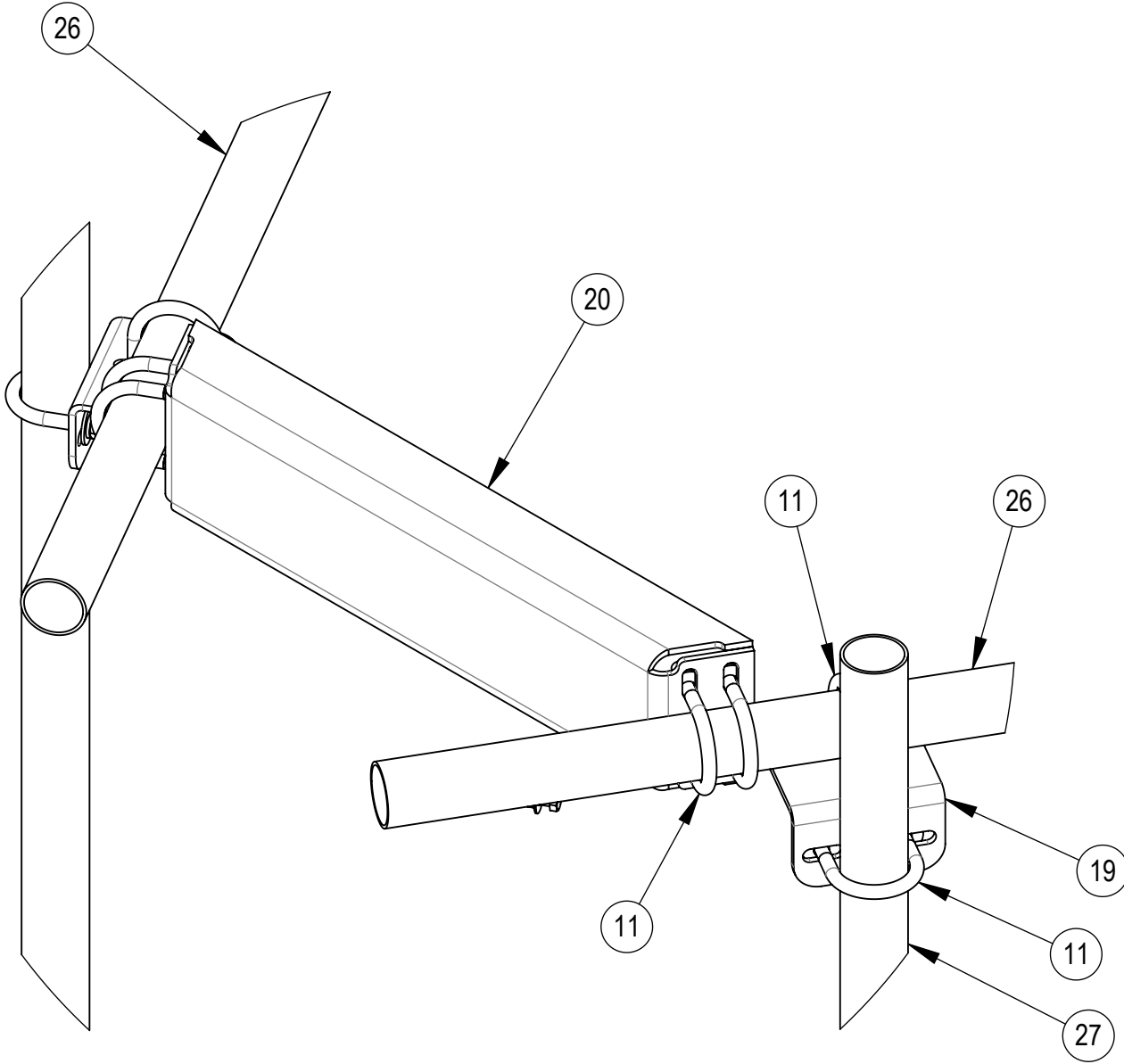
1.0 SOME PARTS HIDDEN FOR CLARITY



DETAIL D
SCALE 1 : 4



DETAIL E
SCALE 1 : 2



DETAIL F
SCALE 1 : 6



TITLE
10-30 FULL GRATING, CO-LO PLATFORM

SIZE **C** SCALE **1:10** DOCUMENT NO. **MTC3792U**



DRAWING		
VERSION	STATUS	REVISION
02	RE	D

SHEET
6 OF 7

Confidential

4

3

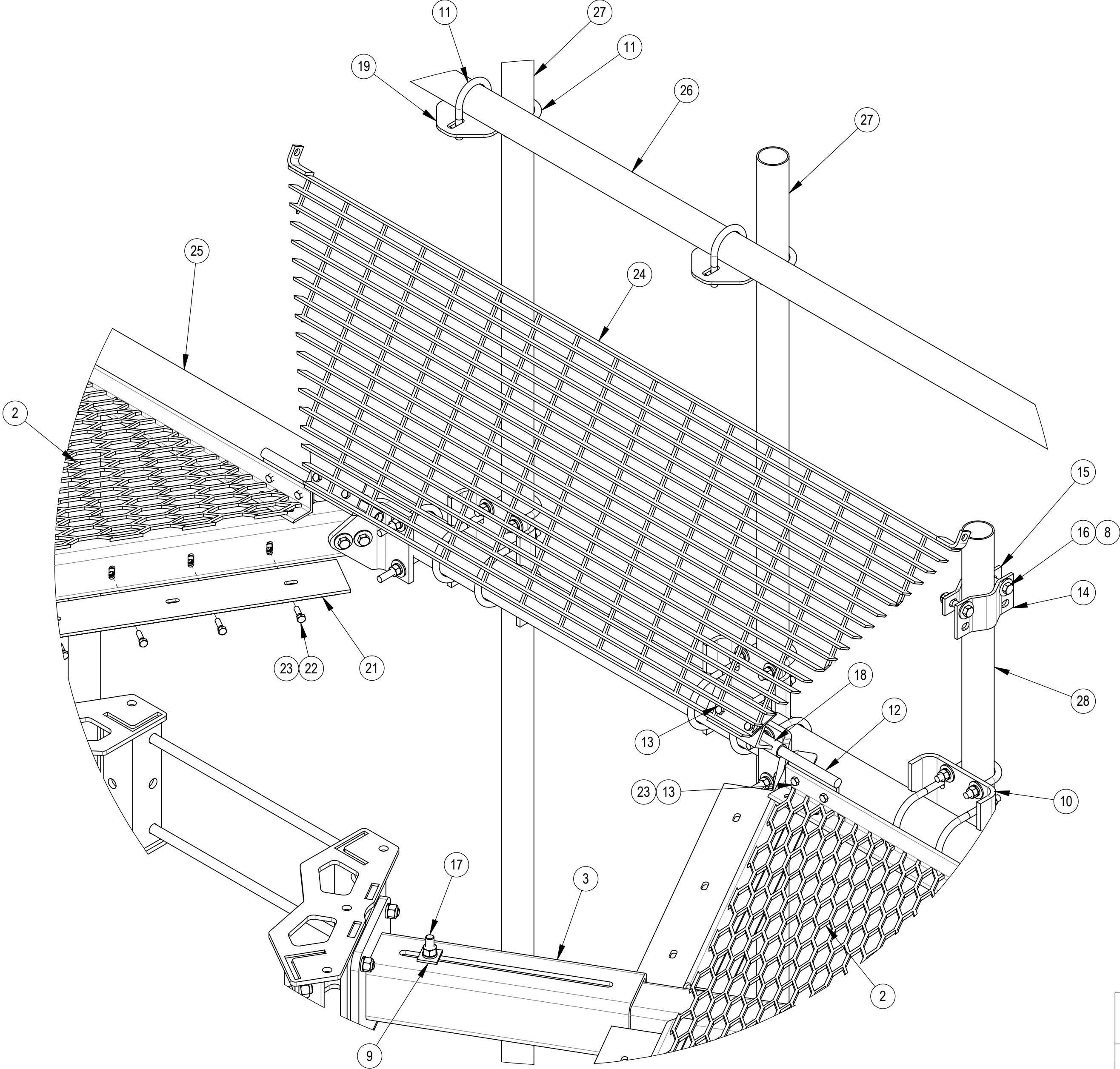
2

1

NOTES

- 1.0 CUSTOMER SUPPLIED LOCKING MECHANISM FOR GRATING WHEN HINGED IN UP POSITION.
- 2.0 ADJUST HEIGHT AS NEEDED FOR ITEMS 1 AND 2 WHEN GRATING HINGED IN UP POSITION.

SHOWN WITH GRATING HINGED UP



DETAIL G
SCALE 1 : 6



TITLE
10-30 FULL GRATING, CO-LO PLATFORM

SIZE
C

SCALE
1:10

DOCUMENT NO.
MTC3792U



DRAWING		
VERSION	STATUS	REVISION
02	RE	D

SHEET
7 OF 7

Confidential