

4

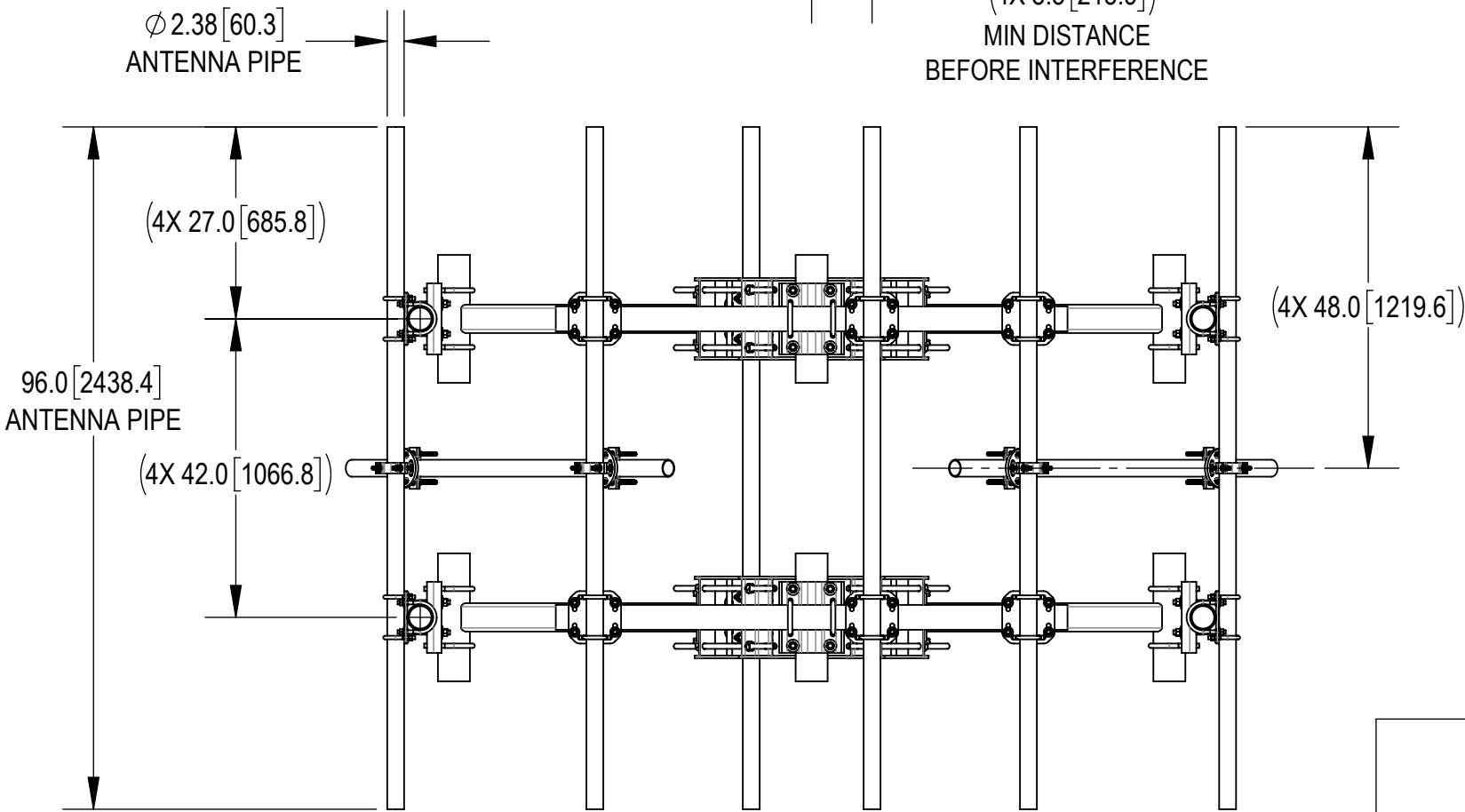
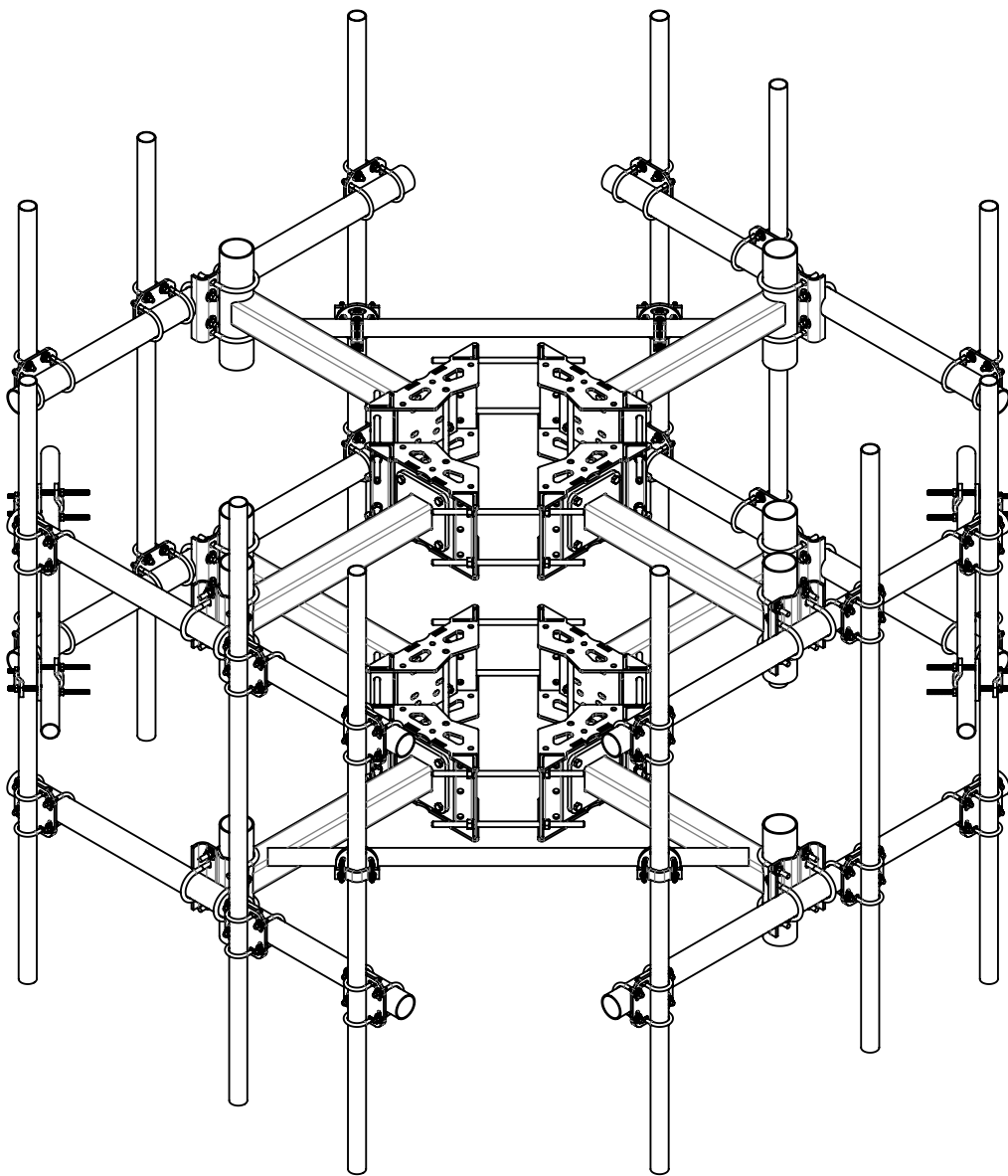
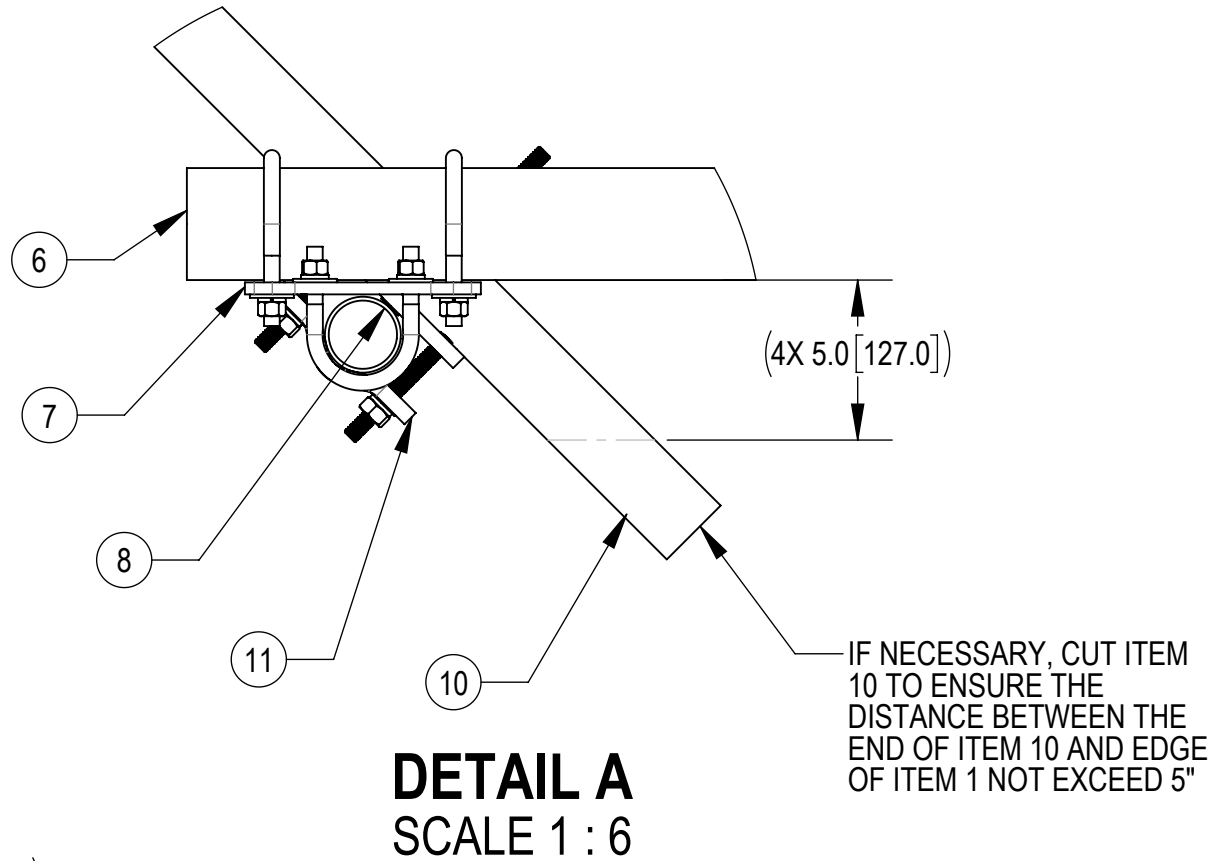
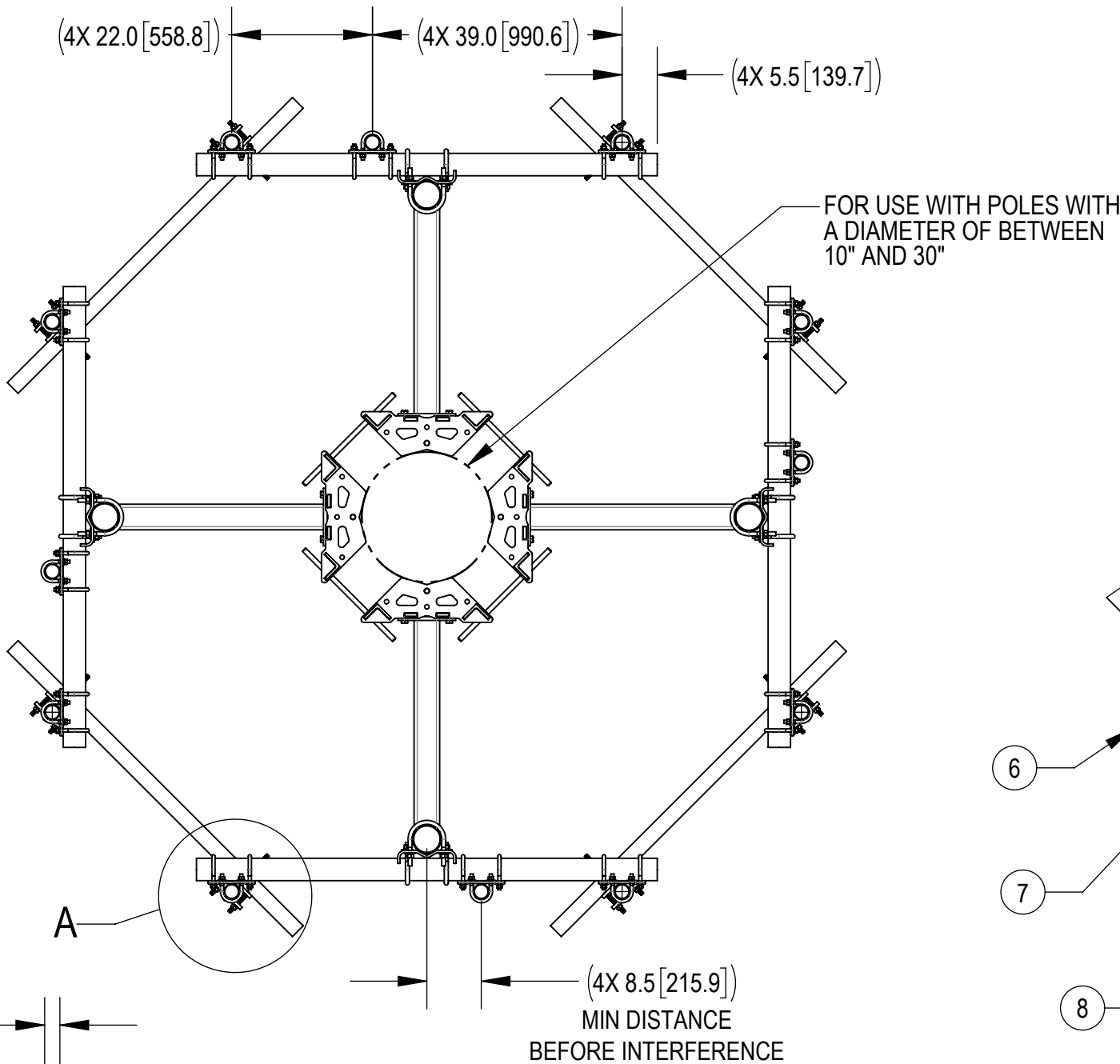
3






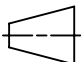
2

1

- 1.0 GENERAL NOTES
- 1.1 ALL METRIC DIMENSIONS ARE IN BRACKETS [X. X]
- 1.2 FOR PATENT INFO: <https://www.adwpat.com>
- 2.0 DESIGN NOTES
- 2.1 ANY HAZARDS OR OBSTRUCTIONS TO THE CLIMBING FACILITY AND SAFETY CLIMB MUST BE IDENTIFIED PRIOR TO INSTALLING THE APPURTENANCE. ADDITIONAL PRODUCTS MAY BE REQUIRED TO MAINTAIN THE INTEGRITY OF THE SAFETY CLIMB. DURING INSTALLATION, TEMPORARY AND/OR PERMANENT PRECAUTIONARY MEASURES SHOULD BE TAKEN TO PRESERVE THE CLIMBING FACILITY AND/OR SAFETY CLIMB.
- 2.2 FITS MONOPOLES 10"-30" O.D.
- 3.0 MANUFACTURING/SPECIAL REQUIREMENTS
- 3.1 TIGHTEN ALL BOLTS SECURING FLAT PLATES BY THE TURN-OF-NUT METHOD. TIGHTEN ALL U-BOLTS USING TURN-OF-NUT METHOD WITH ATTENTION TO LEAVE EQUAL DISTANCE AND EQUAL FORCE ON EACH LEG OF THE U-BOLT.
- 4.0 TEST
- 5.0 PACKAGING
- 5.1 PACKAGING SHALL MEET ANDREW REQUIREMENTS PER DOCUMENT IS-PL-3005
- 5.2 PRINTED DOCUMENT TO BE PLACED INSIDE POLYBAG AND THEN IN SHIPPING CONTAINER
- 5.3 EXTRA HARDWARE MAY BE SUPPLIED, BAGGED AND SHIPPED

REVISIONS			
REV.	DESCRIPTION	DATE	APPROVED
B	ADD TIE BACK AND CONNECTIN	CB1094 24JUN22	CB1094 40149314CMO
C	UPDATED DRAWING FORMAT	LL1090 25JUN25	BA1025 50103538AMO



<div>ANDREW[®] an Amphenol company</div>										
TOLERANCES							SAP MATERIAL MASTER			
0 PLACE		X[X] ± .25[6.3]		2 PLACE		.XX[X] ± 0.06[1.5]		MTC4107S		
1 PLACE		X[X] ± 0.12[3.0]		ANGLES		± 2°				
FINISH					MATERIAL					
UNLESS OTHERWISE SPECIFIED DIMENSIONS ARE IN INCHES INTERPRET PER ANSI Y 14.5M-1994		NAME	DATE	TITLE T-ARM,DOUBLE,4 SCT,10-30,36/72(STND/HR)						
	CE	MRC	05/14/20							
	RW	LL1090	06/26/2025							
										
	AD	BA1025	07/03/2025							
	RE	YMENG	07/03/2025							
	ECN 50103538AMO									
		SCALE	DOCUMENT NO.							
		1:24		MTC4107S						
SIZE	Auth Group		INSL	MODEL			DRAWING			SHEET 1 OF 3
C			VERSION	STATUS	REVISION	VERSION	STATUS	REVISION		
			03	RE	C	02	RE	C		

DENSITY	1897.90	lbs/in³
MASS	6717.85	lbs
VOLUME	64734.25	in³
SURFACE AREA	64734.25	in²
HEIGHT	96"	
LENGTH	131"	
WIDTH	131"	

Confidential

PART NUMBERS, WEIGHTS, & EPA

TABLE 1: CONFIGURATIONS

						INCLUDED PARTS				
PART NUMBER	DESCRIPTION	WEIGHT (LBS)	(EPA)A (FT^2)*	(EPA)A 1/2" ICE THICKNESS (FT^2)*	ANTENNA PIPES	MC-RM1030-4	MTC4107S-SB	1208A0806G	MT-650-63	MTC4107SHK
MTC4107S	T-ARM,DOUBLE,4SCT,10-30,36/72(STND/HR)	1897.90	14.40	18.82	12	2	1	1	4	1

* (EPA)A DOES NOT INCLUDE ANTENNA PIPES AND MOUNTING HARDWARE. IF DESIRED, ADD ANTENNA PIPE PER TABLE 2

TABLE 2: EPA OF EACH ANTENNA PIPE

ANTENNA PIPE	(EPA)A (FT^2)	(EPA)A W/ 1/2" ICE THICKNESS (FT^2)
2-3/8" X 96"	1.52	2.16

NOTE:
1. ANTENNA PIPES ARE CONSIDERED SEPARATELY.
2. KA FACTOR OF 4-SECTOR EPA INCLUDED.
3. COMBINE THE ASSOCIATED EPA VALUES IN THE TABLES ABOVE TO DETERMINE THE EPA OF A MOUNT MODEL WITH A LISTED MOUNT PIPE CONFIGURATION.
FOR EXAMPLE, MTC4107S HAS A 4-SECTOR EPA OF 14.40 FT2 WITH NO ICE PLUS 12 ANTENNA PIPES WITH A 4-SECTOR EPA OF 12X1.52=18.24 FT2 WITH NO ICE.
SO, THE TOTAL EPA OF 32.64 FT2 FOR THE MTC4107S.



TITLE
T-ARM,DOUBLE,4 SCT,10-30,36/72(STND/HR)

SIZE
C

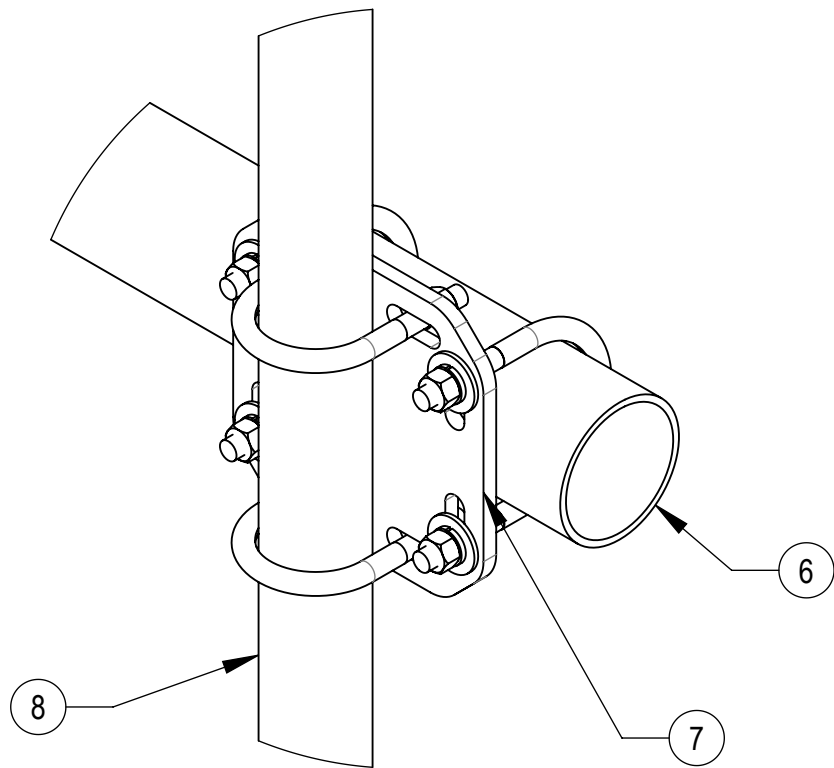
SCALE
1:24

DOCUMENT NO.
MTC4107S

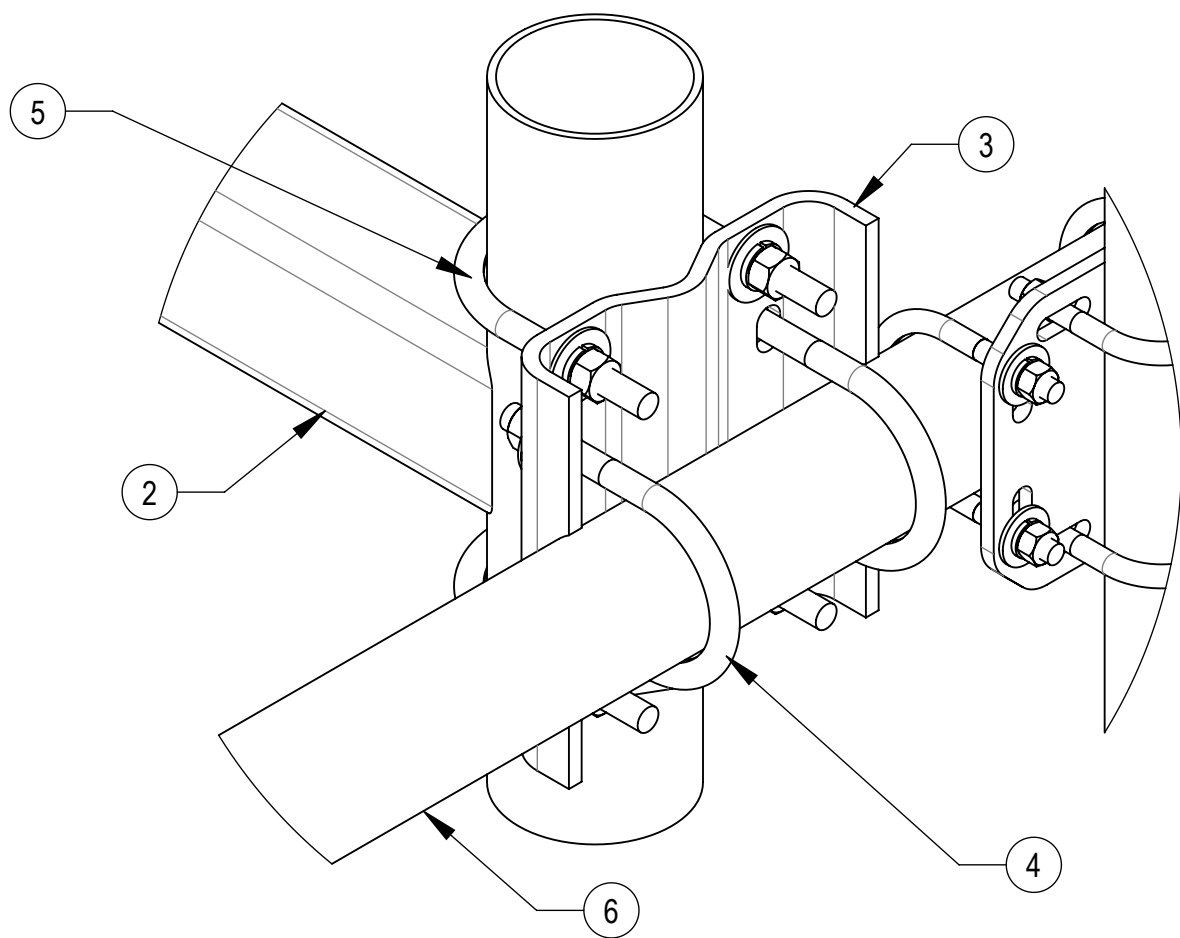


DRAWING			SHEET 2 OF 3
VERSION	STATUS	REVISION	
02	RE	C	

Confidential



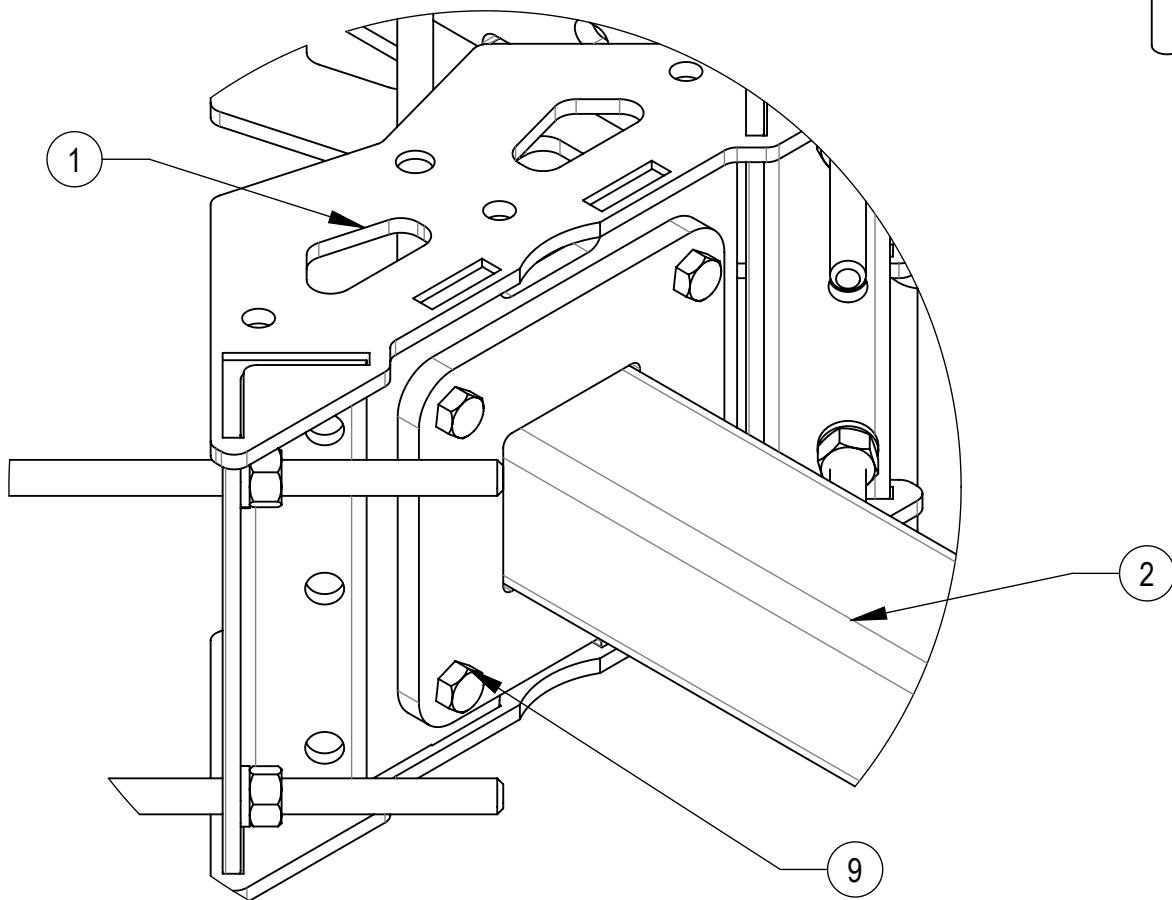
DETAIL B
SCALE 1 : 4



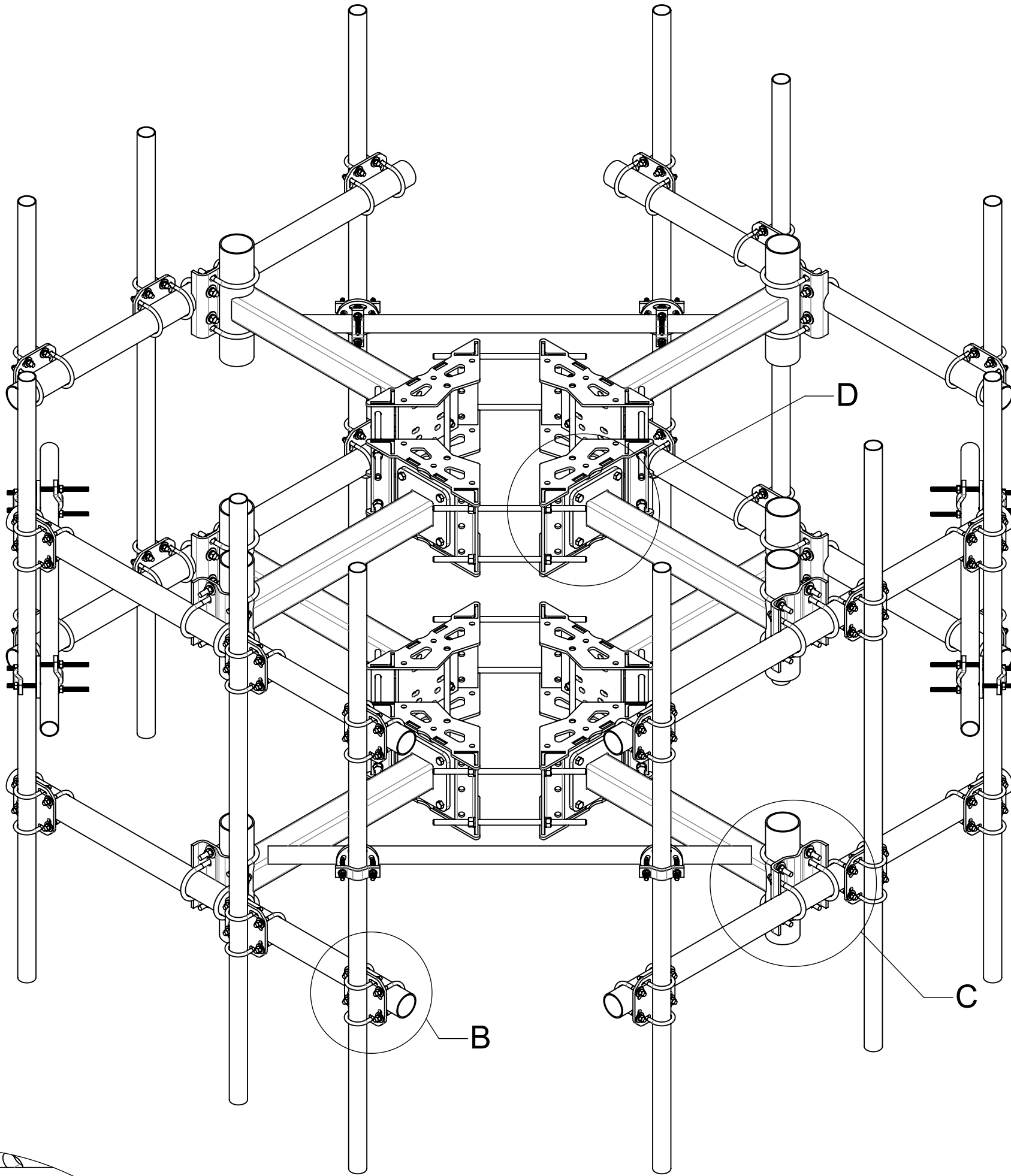
DETAIL C
SCALE 1 : 4

COMPONENT PART NUMBERS PROVIDED FOR ASSEMBLY PURPOSES;
INDIVIDUAL COMPONENTS MAY BE SHIPPED AS PARTS WITHIN AN INCLUDED KIT.

ITEM	PART NO.	DESCRIPTION	QTY.	WEIGHT	NOTE NO.
1	MC-RM1030-4	FOUR SECTOR RING MOUNT, 10-30 OD	2	203.64 LBS	
2	MT19701	36" SINGLE SUPPORT ARM	8	57.29 LBS	
3	MT21613	CENTER BRACKET	8	11.80 LBS	
4	GUB-53560	5/8" X 3-5/8" X 6" GALV U-BOLT	16	1.30 LBS	
5	GUB-5456	5/8" X 4-5/8" X 6½" GALV U-BOLT	16	1.43 LBS	
6	MT54772	3.5" OD X 72" PIPE	8	36.41 LBS	
7	XP-2030	CROSSOVER PLATE KIT, 2-3/8 OD X 3-1/2 OD	24	8.06 LBS	
8	MT-651-96	2.375"OD X 96" GALV PIPE	12	23.00 LBS	
9	GB-05225	5/8" X 2-1/4" GALV BOLT KIT	32	0.28 LBS	
10	MT-650-63	2.375" OD X 63" PIPE	4	15.26 LBS	
11	XP-R	CROSSOVER PLATE, ROUND, UP TO 3.5" OD	8	6.20 LBS	



DETAIL D
SCALE 1 : 4



TITLE
T-ARM,DOUBLE,4 SCT,10-30,36/72(STND/HR)

SIZE
C

SCALE
1:24

DOCUMENT NO.
MTC4107S



DRAWING			SHEET 3 OF 3
VERSION	STATUS	REVISION	
02	RE	C	

Confidential