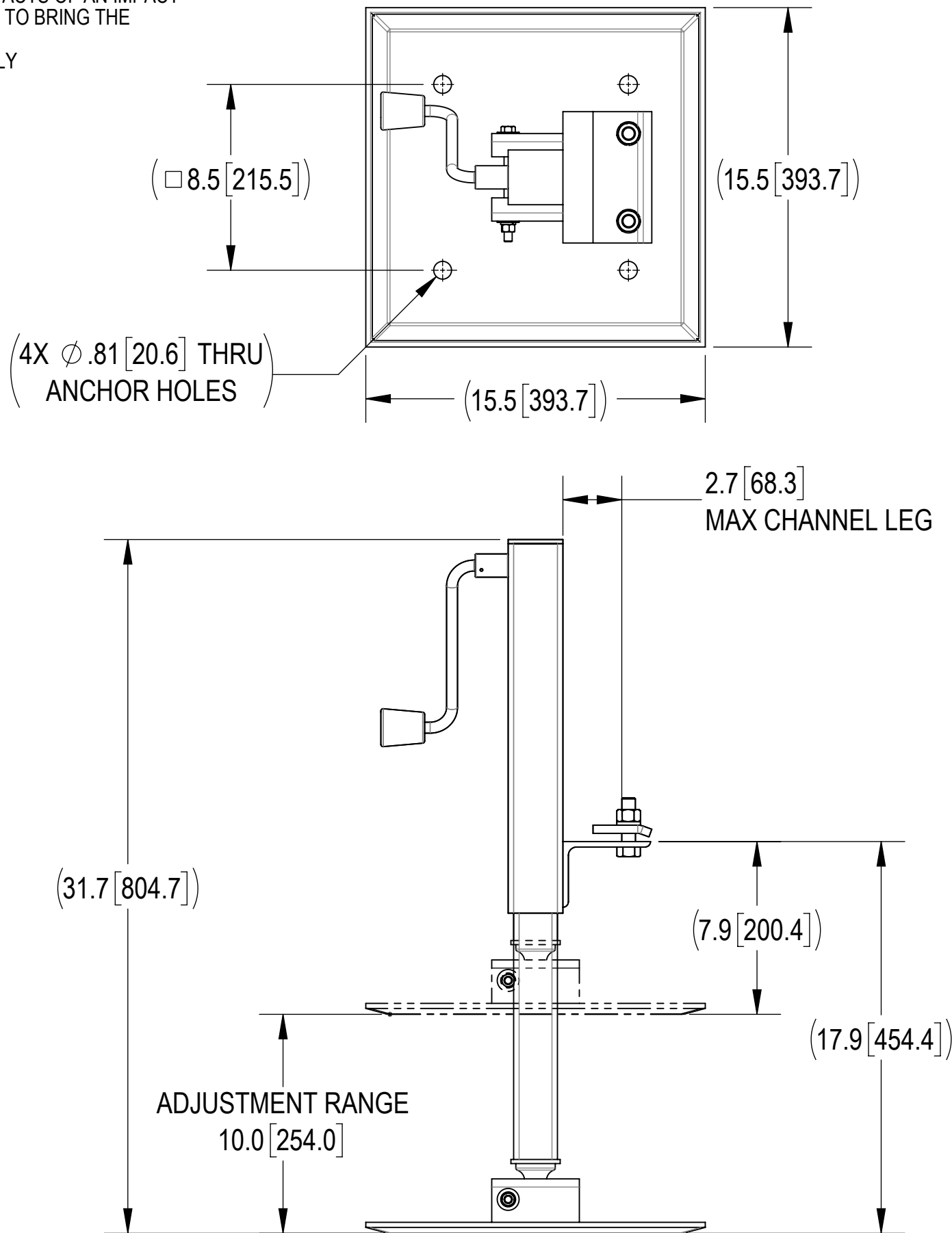
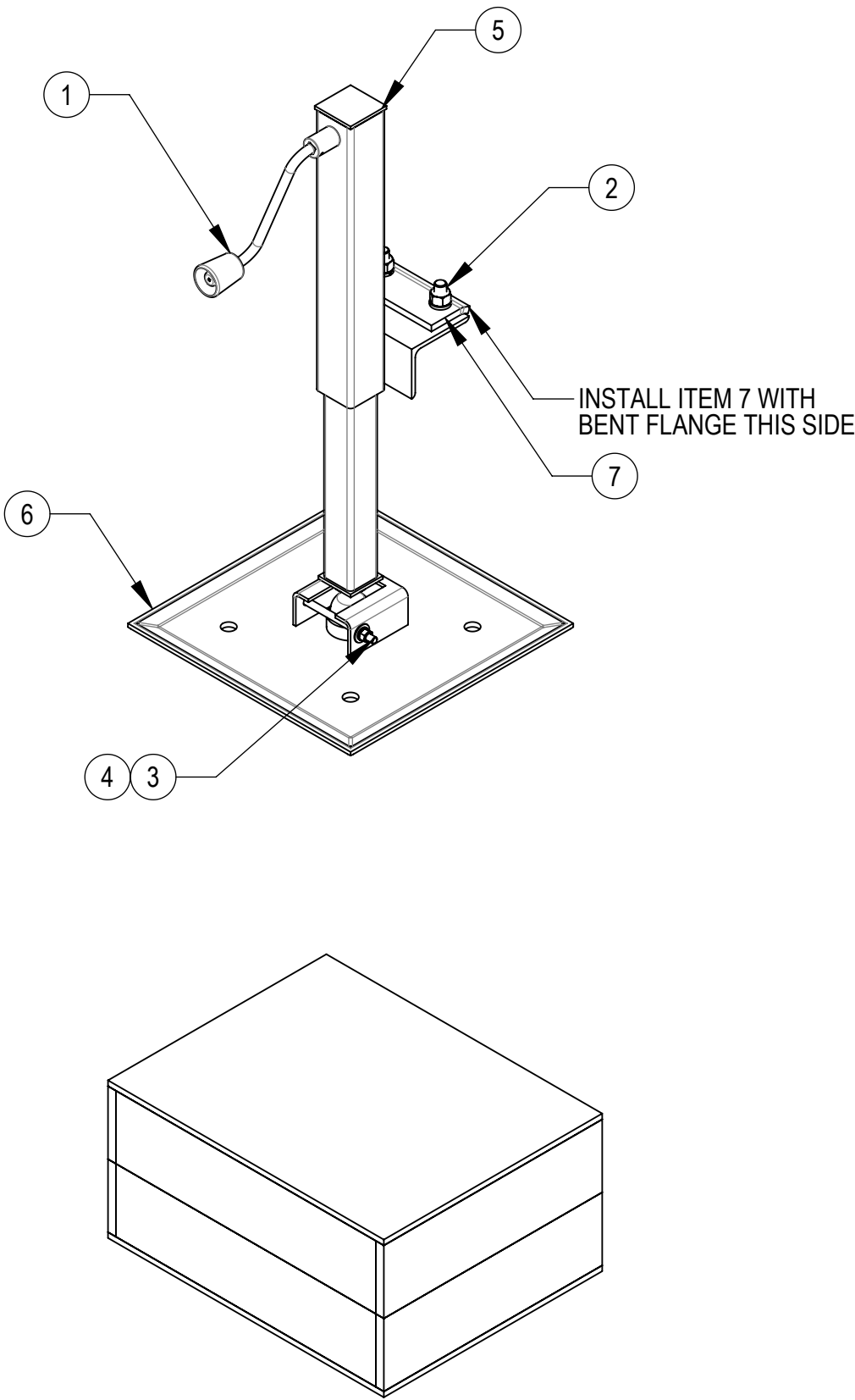


- 4
- 3
- 2
- 1
- 1.0 GENERAL NOTES
- 1.1 ALL METRIC DIMENSIONS ARE IN BRACKETS [X. X]
- 1.2 FOR PATENT INFO: <https://www.adwpat.com>
- 2.0 DESIGN NOTES
- 2.1 MAX WORKING LOAD 2,000 LBS.
- 2.2 ESTIMATED FOOT PLATE AREA: 1.28 SQ FT (FLAT), 1.67 SQ FT (ALL)
- 3.0 MANUFACTURING/INSTALLATION NOTES
- 3.1 ADJUSTMENT LEG MUST BE INSTALLED VERTICALLY AND FLUSH WITH OUTSIDE OF PLATFORM STRUCTURE, WITH FOOT PLATE CENTERED UNDER JACK BODY. REMOVE ANY GAP BETWEEN OUTSIDE OF PLATFORM STRUCTURE AND JACK BODY
- 3.2 FOOTER BASE PLATE TO BE LEVEL IN BOTH DIRECTIONS
- 3.3 TIGHTEN ALL BOLTS SNUG TIGHT, DEFINED AS THE CONDITION OBTAINED WITH A FEW IMPACTS OF AN IMPACT WRENCH OR THE FULL EFFORT OF AN IRONWORKER USING AN ORDINARY SPUD WRENCH TO BRING THE PARTS INTO FIRM CONTACT
- 3.4 ADJUST ALL JACK LEGS TO LEVEL PLATFORM, TAKING CARE TO DISTRIBUTE LOADS EVENLY
- 3.5 ANCHOR REQUIREMENTS TO BE DETERMINED BY ENGINEER OF RECORD
- 4.0 TEST
- 5.0 PACKAGING
- 5.1 PACKAGING SHALL MEET ANDREW REQUIREMENTS PER DOCUMENT IS-PL-3005
- 5.2 PRINTED DOCUMENT TO BE PLACED INSIDE POLYBAG AND THEN IN SHIPPING CONTAINER
- 5.3 EXTRA HARDWARE MAY BE SUPPLIED, BAGGED AND SHIPPED

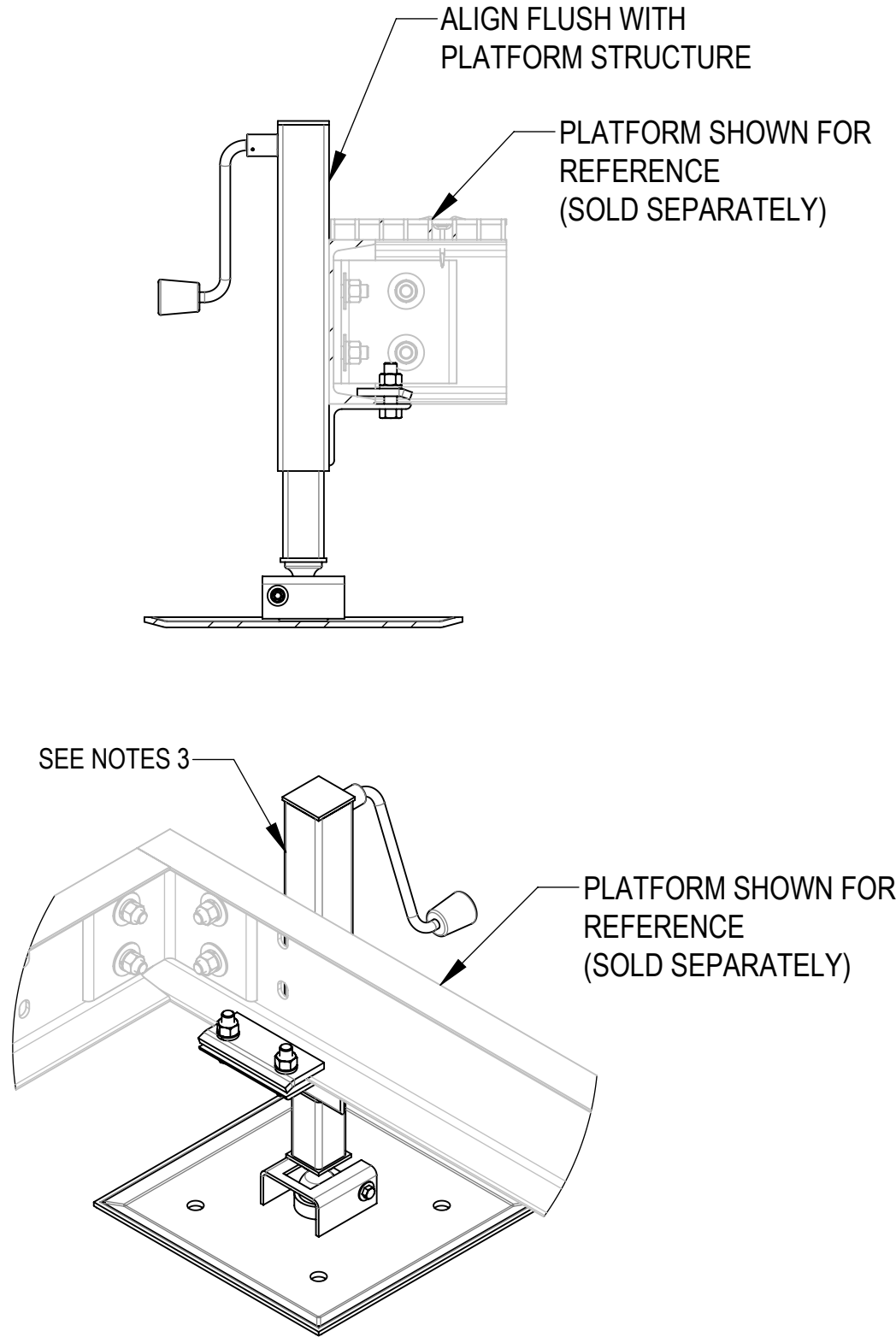


- FOOTER ADJUSTMENT (IF REQUIRED)
1. RELIEVE JACK LOAD
2. LOOSEN TWO CLAMP BOLTS
3. TRUE UP ADJUSTMENT LEG PER NOTES 3.1, 3.2
4. RE-TIGHTEN TWO CLAMP BOLTS WHILE ENSURING JACK BODY IS AGAINST FULL HEIGHT OF STRUCTURE
5. RETURN ADJUSTMENT LEG TO FULL LOAD
6. RE-INSPECT FOR TRUENESS






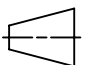
Confidential

DENSITY	MASS	56.00	lbs/in³
VOLUME		150.45	lbs
SURFACE AREA		1356.37	in³
HEIGHT	(31.7")		
LENGTH	15.5"		
WIDTH	15.5"		

REVISIONS			
REV.	DESCRIPTION	DATE	APPROVED
F	ADDED HOLE TO FOOT PLATE	MRC 17JUL18	BCROSS 8000030740
G	REDRAWN IN SOLIDWORKS	YMENG 14FEB23	BA1025 40165855CMO
H	UPDATED NOTES; ADDED INSTALLED VIEW	RY1002 28JUL25	YC1015 50104132AMO



INSTALLED JACK VIEW

<div><b>ANDREW</b>® an Amphenol company</div>											
TOLERANCES						SAP MATERIAL MASTER					
1 PLACE .X[X] ± .25[6.3]			3 PLACE .XXX[X] ± .030[.76]			EQ-P-AL					
2 PLACE .XX[X] ± .06[1.5]			ANGLES ± 2°								
FINISH					MATERIAL						
UNLESS OTHERWISE SPECIFIED DIMENSIONS ARE IN INCHES INTERPRET PER ANSI Y 14.5M-1994		NAME	DATE	ADJ. LEG FOR EQUIPMENT PLATFORMS							
	CE	YMENG	14FEB23								
	RW	RY1002	07/30/2025								
				SCALE <b>1:6</b> DOCUMENT NO. <b>EQ-P-AL</b>							
	AD	AG1119	08/01/2025								
	RE	AG1119	08/05/2025								
	ECN 50104132AMO										
SIZE		Auth Group	INSL	MODEL			DRAWING			SHEET 1 OF 1	
<b>C</b>			VERSION	STATUS	REVISION	VERSION	STATUS	REVISION			
				05	RE	F	03	RE	H		