

- 1.0 GENERAL NOTES
- 1.1 ALL METRIC DIMENSIONS ARE IN BRACKETS [X.X]
- 1.2 FOR PATENT INFO: <https://www.adwpat.com>
- 2.0 DESIGN NOTES
- 2.1 ANY HAZARDS OR OBSTRUCTIONS TO THE CLIMBING FACILITY AND SAFETY CLIMB MUST BE IDENTIFIED PRIOR TO INSTALLING THE APPURTENANCE. ADDITIONAL PRODUCTS MAY BE REQUIRED TO MAINTAIN THE INTEGRITY OF THE SAFETY CLIMB. DURING INSTALLATION, TEMPORARY AND/OR PERMANENT PRECAUTIONARY MEASURES SHOULD BE TAKEN TO PRESERVE THE CLIMBING FACILITY AND/OR SAFETY CLIMB.
- 3.0 MANUFACTURING/SPECIAL REQUIREMENTS
- 3.1 FOR LOADING SEE ENGINEERING SPEC SHEET.
- 3.2 FOR 5/8" DIAMETER BOLTS SHOULD BE TIGHTENED SNUG TIGHT, DEFINED AS THE CONDITION OBTAINED WITH A FEW IMPACTS OF AN IMPACT WRENCH OR THE FULL EFFORT OF AN IRONWORKER USING AN ORDINARY SPUD WRENCH TO BRING THE CONNECTED PLIES INTO FIRM CONTACT.
- 3.3 TIGHTEN ALL BOLTS SECURING FLAT PLATES BY THE TURN-OF-NUT METHOD. TIGHTEN ALL U-BOLTS USING TURN-OF-NUT METHOD WITH ATTENTION TO LEAVE EQUAL DISTANCE AND EQUAL FORCE ON EACH LEG OF THE U-BOLT.
- 4.0 TEST
- 5.0 PACKAGING
- 5.1 PACKAGING SHALL MEET ANDREW REQUIREMENTS PER DOCUMENT IS-PL-3005
- 5.2 PRINTED DOCUMENT TO BE PLACED INSIDE POLYBAG AND THEN IN SHIPPING CONTAINER
- 5.3 EXTRA HARDWARE MAY BE SUPPLIED, BAGGED AND SHIPPED

REVISIONS			
REV.	DESCRIPTION	DATE	APPROVED
A	INITIAL RELEASE	RJC 27APR21	BCROSS 12161
B	UPDATED TO ANDREW FORMAT	JL1183 12SEP25	BA1025 50104926AMO

D

D

C

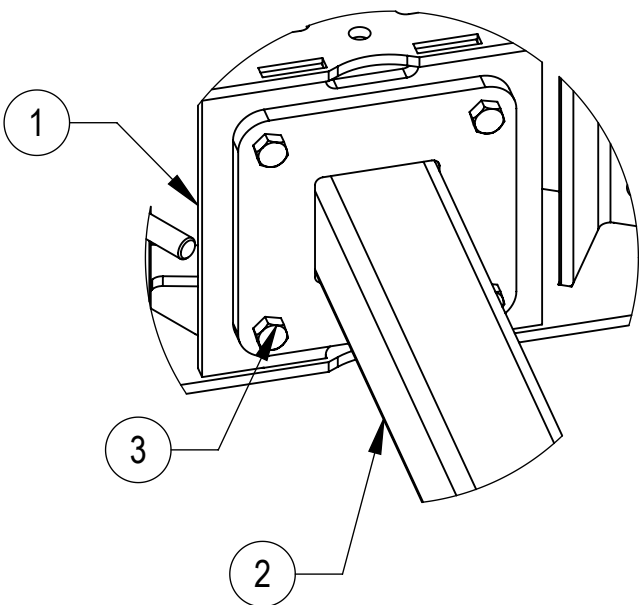
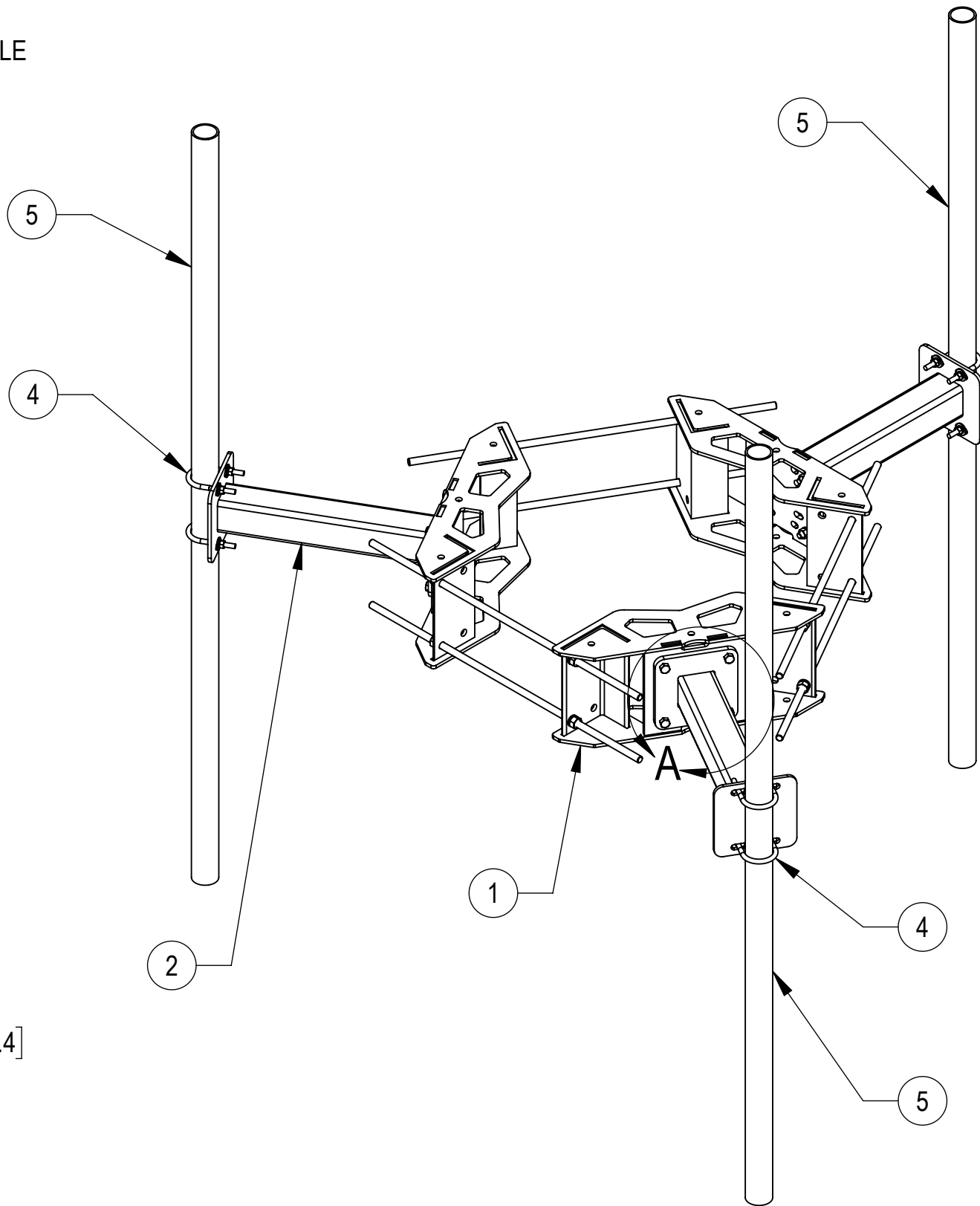
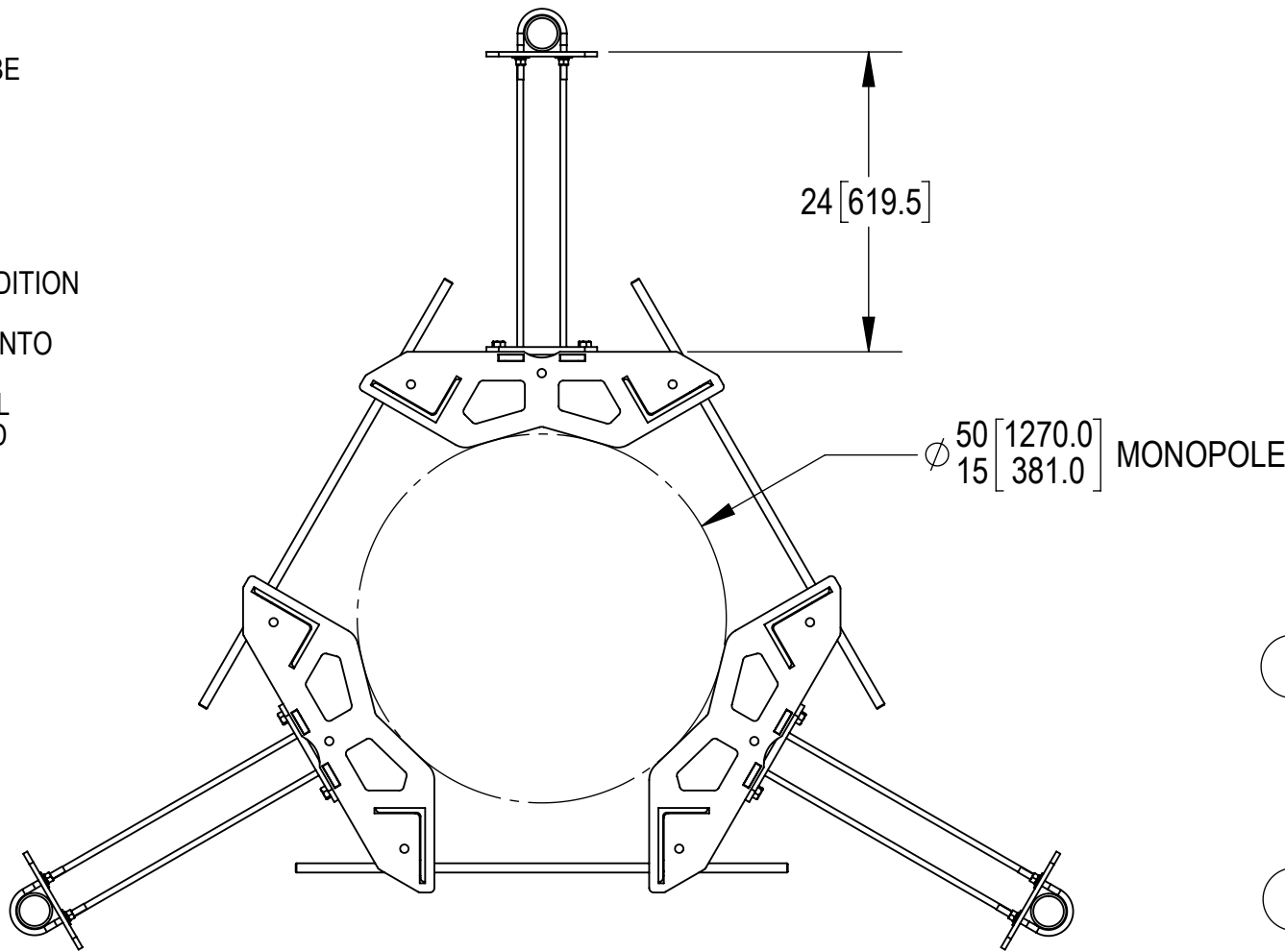
C

B

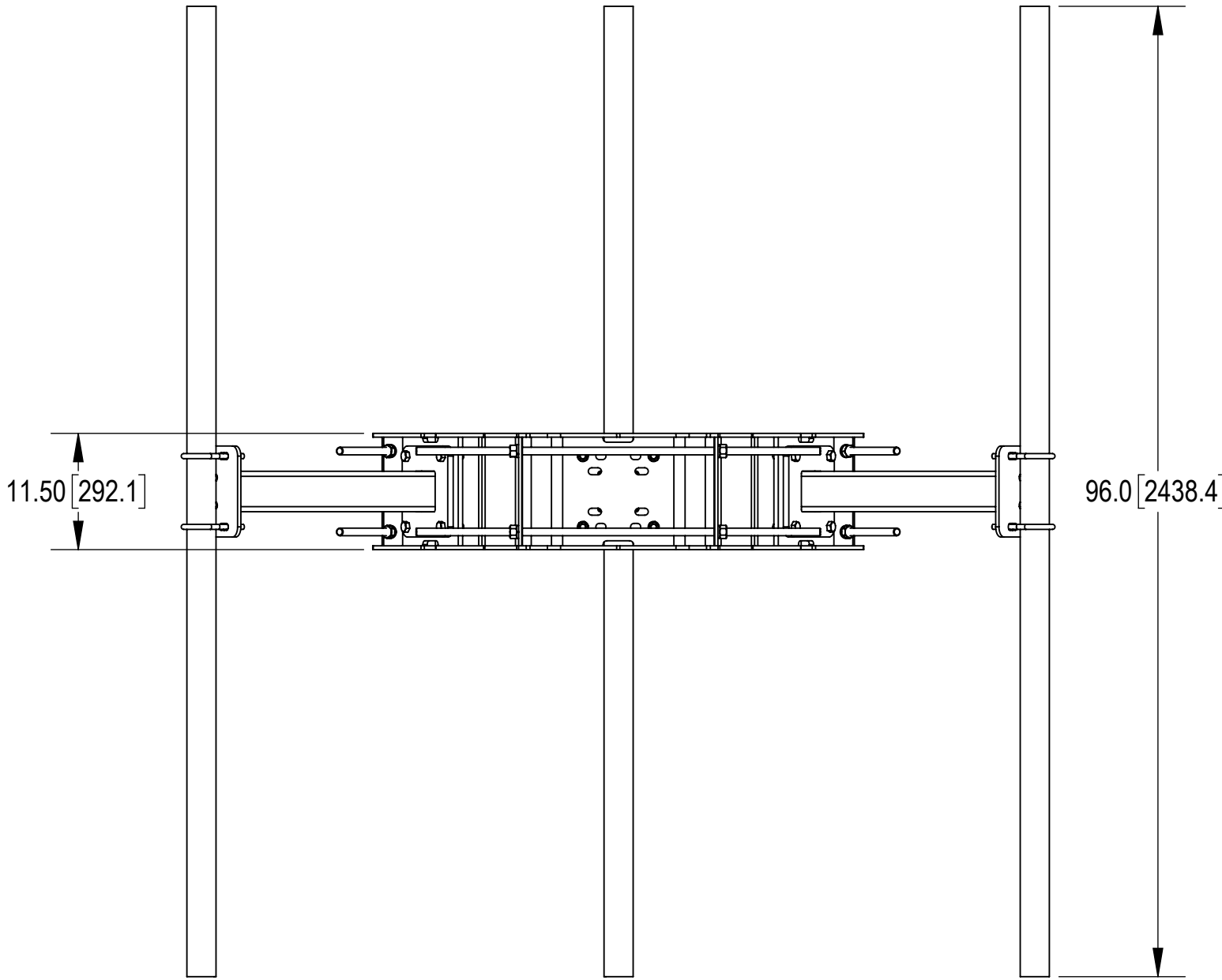
B

A

A



DETAIL A
SCALE 1 : 6




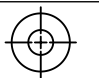
COMPONENT PART NUMBERS PROVIDED FOR ASSEMBLY PURPOSES;
INDIVIDUAL COMPONENTS MAY BE SHIPPED AS PARTS WITHIN AN INCLUDED KIT.

ITEM	PART NO.	DESCRIPTION	QTY.	WEIGHT	NOTE NO.
1	MC-RM1550-3	15" - 50" OD RINGMOUNT	1	229.90 LBS	
2	MCSA24B01	24" STANDOFF WELDMENT	3	43.25 LBS	
3	GB-05225	5/8" X 2-1/4" GALV BOLT KIT	12	0.28 LBS	
4	GUB-4352	1/2" X 3" X 5-1/4" GALV U-BOLT	6	0.71 LBS	
5	MT54696	PIPE, 2.875"OD X 96"	3	45.96 LBS	

DENSITY	MASS	507.659	lbs/in³
VOLUME	6428.366	in³	
SURFACE AREA	31671.891	in²	
HEIGHT	(76.5")		
LENGTH	96.0"		
WIDTH	(85.3")		

Confidential

**ANDREW**® an Amphenol company

TOLERANCES		SAP MATERIAL MASTER		
1 PLACE .X[X] ± 0.1[3.0]	3 PLACE .XXX[X] ± 0.010[0.3]	MC-FM3-24-278		
2 PLACE .XX[X] ± 0.03[0.8]	ANGLES ± 0.5°			
FINISH		MATERIAL		
UNLESS OTHERWISE SPECIFIED DIMENSIONS ARE IN INCHES INTERPRET PER ANSI Y 14.5M-1994	NAME	DATE	TITLE	
	CE RJC	04/27/21	RM 15-50" W/24" STANDOFF, 2-7/8 X 96	
	RW JL1183	09/16/2025		
	AD YMENG	09/16/2025		
	RE YMENG	09/16/2025	SCALE 1:15 DOCUMENT NO. MC-FM3-24-278	
	ECN 50104926AMO			
SIZE Auth Group INSL		MODEL		
C		VERSION STATUS REVISION		
		01 RE B		
		DRAWING		
		VERSION STATUS REVISION		
		01 RE B		
		SHEET 1 OF 2		

PART NUMBERS, WEIGHTS, & EPA

TABLE 1: CONFIGURATIONS

PART NUMBER	DESCRIPTION	WEIGHT (LBS)	(EPA)A (FT²)*	(EPA)A 1/2" ICE THICKNESS (FT²)*	ANTENNA PIPES	INCLUDED PARTS		
						MC-RM1550-3	MC-FM3-24HK	PB0308K
MC-FM3-24-278	RM 15-50" W/24" STANDOFF, 2-7/8 X 96	507.66	2.67	2.01	3	1	1	1

* (EPA)A DOES NOT INCLUDE ANTENNA PIPES AND MOUNTING HARDWARE. IF DESIRED, ADD ANTENNA PIPE PER TABLE 2

TABLE 2: EPA OF EACH ANTENNA PIPE

ANTENNA PIPE	(EPA)A (FT²)	(EPA)A W/ 1/2" ICE THICKNESS (FT²)
2-7/8" X 96"	1.84	2.48

NOTE:
1. ANTENNA PIPES ARE CONSIDERED SEPARATELY.
2. KA FACTOR OF 3 T-ARMS EPA INCLUDED.
3. COMBINE THE ASSOCIATED EPA VALUES IN THE TABLES ABOVE TO DETERMINE THE EPA OF A MOUNT MODEL WITH A LISTED MOUNT PIPE CONFIGURATION.
FOR EXAMPLE, MC-FM3-24-278 HAS A 3 T-ARMS EPA OF 2.67 FT2 WITH NO ICE PLUS 3 ANTENNA PIPES WITH A 3 T-ARMS EPA OF 3X1.84=5.52 FT2 WITH NO ICE.
SO, THE TOTAL EPA OF 8.19 FT2 FOR THE MC-FM3-24-278.



TITLE
RM 15-50" W/24" STANDOFF, 2-7/8 X 96

SIZE C	SCALE 1:15	DOCUMENT NO. MC-FM3-24-278
------------------	----------------------	-------------------------------



DRAWING			SHEET 2 OF 2
VERSION	STATUS	REVISION	
01	RE	B	

Confidential