

4

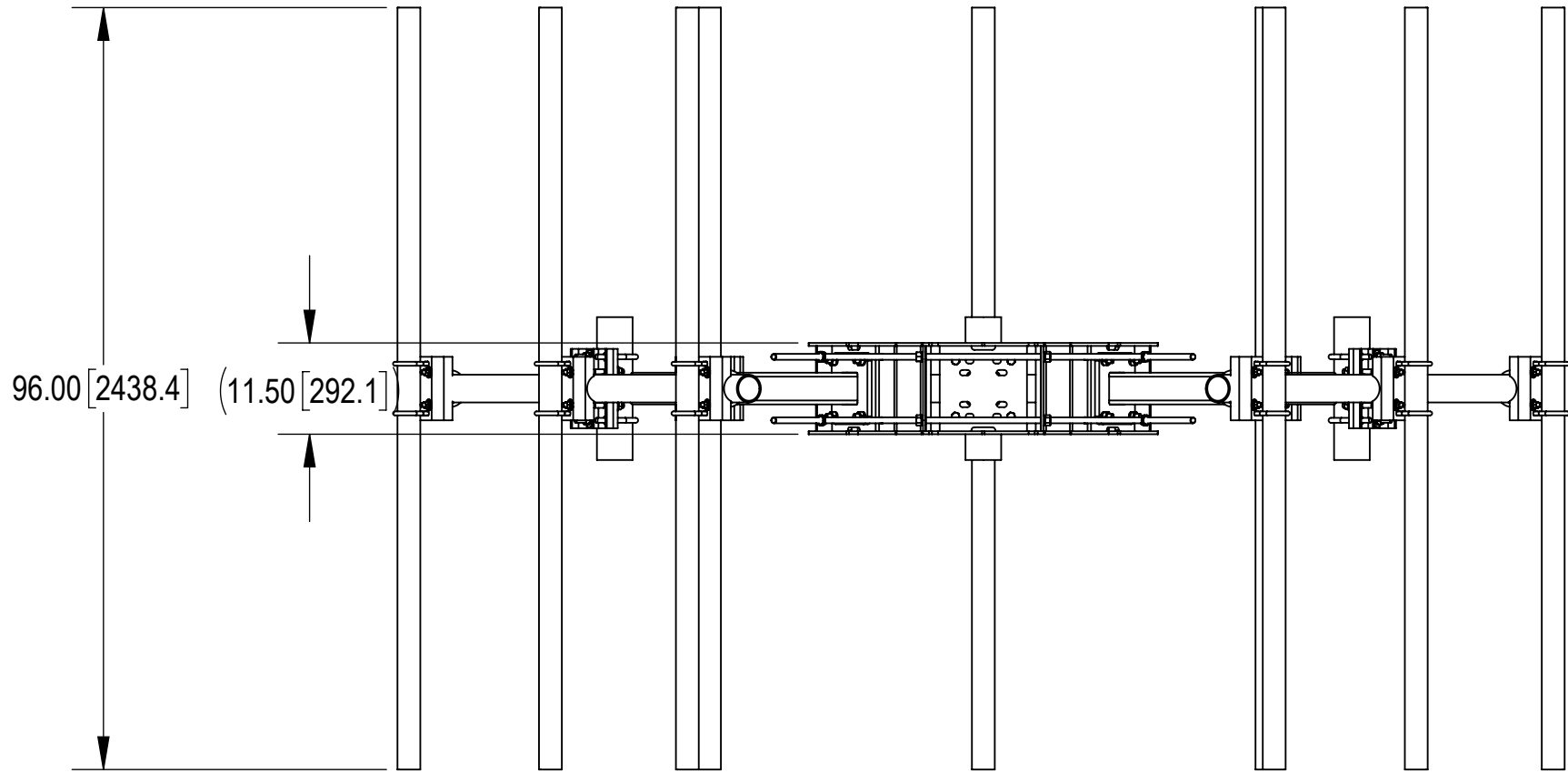
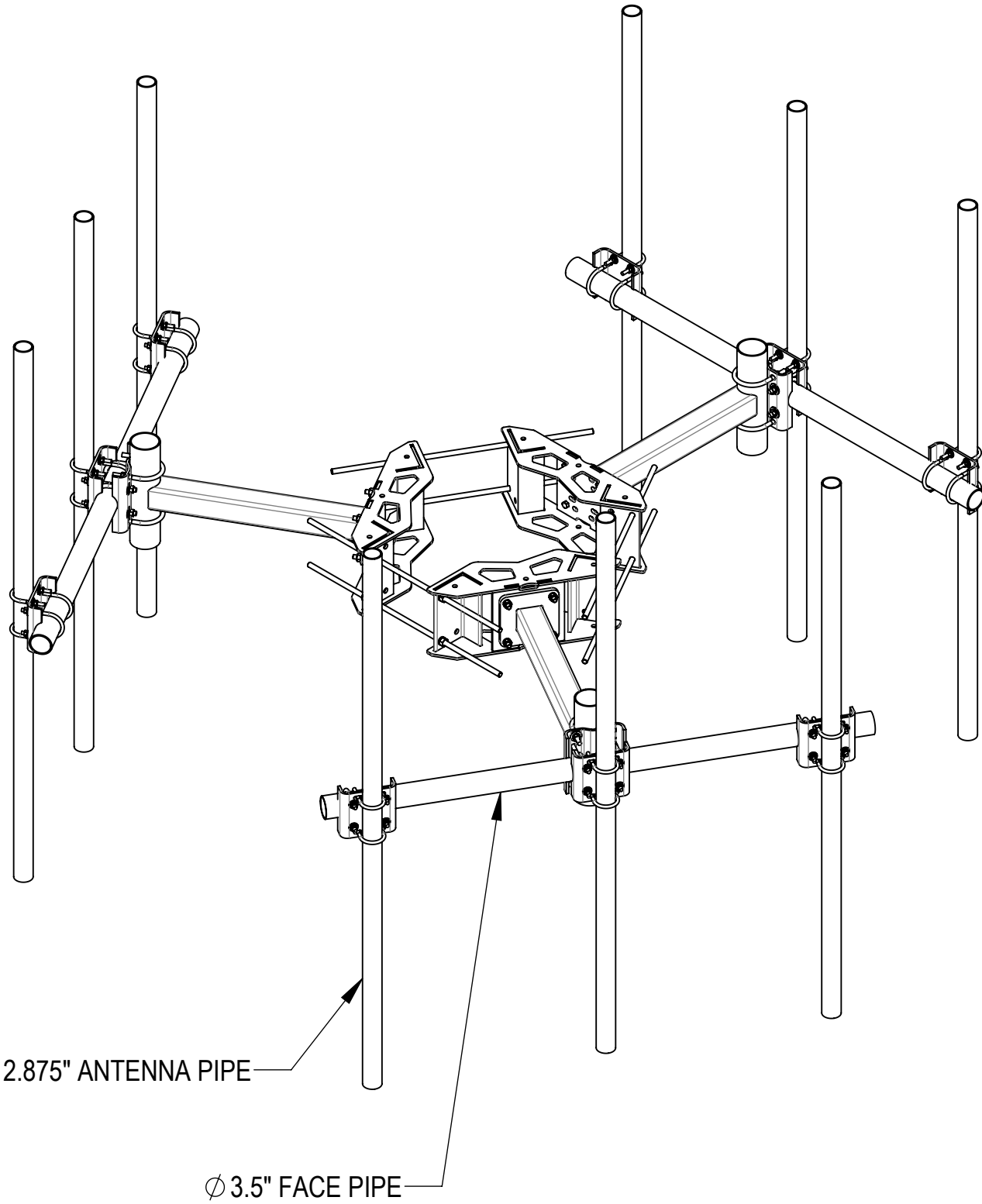
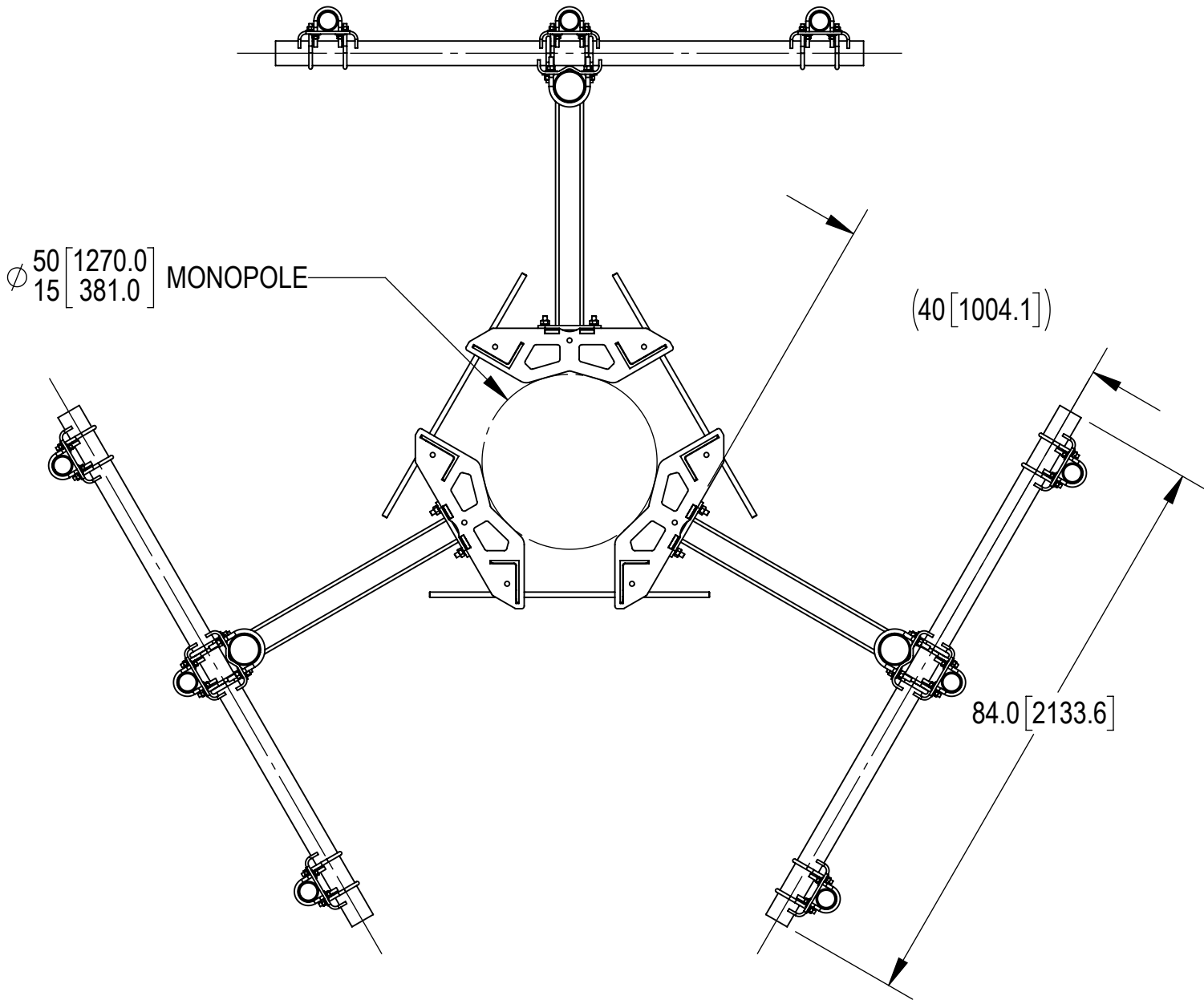
3


2

1

- 1.0 GENERAL NOTES
- 1.1 ALL METRIC DIMENSIONS ARE IN BRACKETS [X.X]
- 1.2 FOR PATENT INFO: <https://www.adwpat.com>
- 2.0 DESIGN NOTES
- 2.1 ANY HAZARDS OR OBSTRUCTIONS TO THE CLIMBING FACILITY AND SAFETY CLIMB MUST BE IDENTIFIED PRIOR TO INSTALLING THE APPURTENANCE. ADDITIONAL PRODUCTS MAY BE REQUIRED TO MAINTAIN THE INTEGRITY OF THE SAFETY CLIMB. DURING INSTALLATION, TEMPORARY AND/OR PERMANENT PRECAUTIONARY MEASURES SHOULD BE TAKEN TO PRESERVE THE CLIMBING FACILITY AND/OR SAFETY CLIMB.
- 3.0 MANUFACTURING/SPECIAL REQUIREMENTS
- 3.1 TIGHTEN ALL BOLTS SECURING FLAT PLATES BY THE TURN-OF-NUT METHOD. TIGHTEN ALL U-BOLTS USING TURN-OF-NUT METHOD WITH ATTENTION TO LEAVE EQUAL DISTANCE AND EQUAL FORCE ON EACH LEG OF THE U-BOLT.
- 4.0 TEST
- 5.0 PACKAGING
- 5.1 PACKAGING SHALL MEET ANDREW REQUIREMENTS PER DOCUMENT IS-PL-3005
- 5.2 PRINTED DOCUMENT TO BE PLACED INSIDE POLYBAG AND THEN IN SHIPPING CONTAINER
- 5.3 EXTRA HARDWARE MAY BE SUPPLIED, BAGGED AND SHIPPED

REVISIONS			
REV.	DESCRIPTION	DATE	APPROVED
A	NEW RELEASED	XZ1054 11MAR21	BCROSS 10539PC
B	UPDATED TO ANDREW FORMAT	JL1183 12SEP25	BA1025 50104926AMO





**ANDREW**® an Amphenol company

TOLERANCES		SAP MATERIAL MASTER	
1 PLACE .X[X] ± 0.1[3.0]	3 PLACE .XXX[X] ± 0.03[0.8]	<b>MC-K6MHDX-9-96</b>	
2 PLACE .XX[X] ± 0.06[1.5]	ANGLES ± 2°		
FINISH		MATERIAL	
UNLESS OTHERWISE SPECIFIED DIMENSIONS ARE IN INCHES INTERPRET PER ANSI Y 14.5M-1994		TITLE <b>T-ARM, MCK6, 3, 4" x 84" , 9, 2-7/8"x96</b>	
NAME CE XZ1054 RW JL1183 AD YMENG RE YMENG ECN 50104926AMO		DATE 03/08/2021 09/16/2025 09/16/2025 09/16/2025	
SCALE <b>1:32</b>		DOCUMENT NO. <b>MC-K6MHDX-9-96</b>	
SIZE Auth Group INSL		MODEL VERSION STATUS REVISION	
<b>C</b>		01 RE B	
HEIGHT (63.0") LENGTH 96.0" WIDTH (147.1")		DRAWING VERSION STATUS REVISION 01 RE B	
SHEET 1 OF 3			

Confidential

PART NUMBERS, WEIGHTS, & EPA

TABLE 1: CONFIGURATIONS

PART NUMBER	DESCRIPTION	WEIGHT (LBS)	(EPA)A (FT²)*	(EPA)A 1/2" ICE THICKNESS (FT²)*	ANTENNA PIPES	INCLUDED PARTS		
						MT-219M-H	PB037L0908K	MCKMBH
MC-K6MHDX-9-96	T-ARM, MCK6, 3,4" X 84" , 9,2-7/8"X96	1150.18	8.30	10.32	9	9	1	1

\* (EPA)A DOES NOT INCLUDE ANTENNA PIPES AND MOUNTING HARDWARE. IF DESIRED, ADD ANTENNA PIPE PER TABLE 2

TABLE 2: EPA OF EACH ANTENNA PIPE

ANTENNA PIPE	(EPA)A (FT²)	(EPA)A W/ 1/2" ICE THICKNESS (FT²)
2-7/8" X 96"	1.84	2.48

NOTE:  
1. ANTENNA PIPES ARE CONSIDERED SEPARATELY.  
2. KA FACTOR OF 3 T-ARMS EPA INCLUDED.  
3. COMBINE THE ASSOCIATED EPA VALUES IN THE TABLES ABOVE TO DETERMINE THE EPA OF A MOUNT MODEL WITH A LISTED MOUNT PIPE CONFIGURATION.  
FOR EXAMPLE, MC-K6MHDX-9-96 HAS A 3 T-ARMS EPA OF 8.30 FT2 WITH NO ICE PLUS 9 ANTENNA PIPES WITH A 3 T-ARMS EPA OF 9X1.84=16.56 FT2 WITH NO ICE.  
SO, THE TOTAL EPA OF 24.86 FT2 FOR THE MC-K6MHDX-9-96.



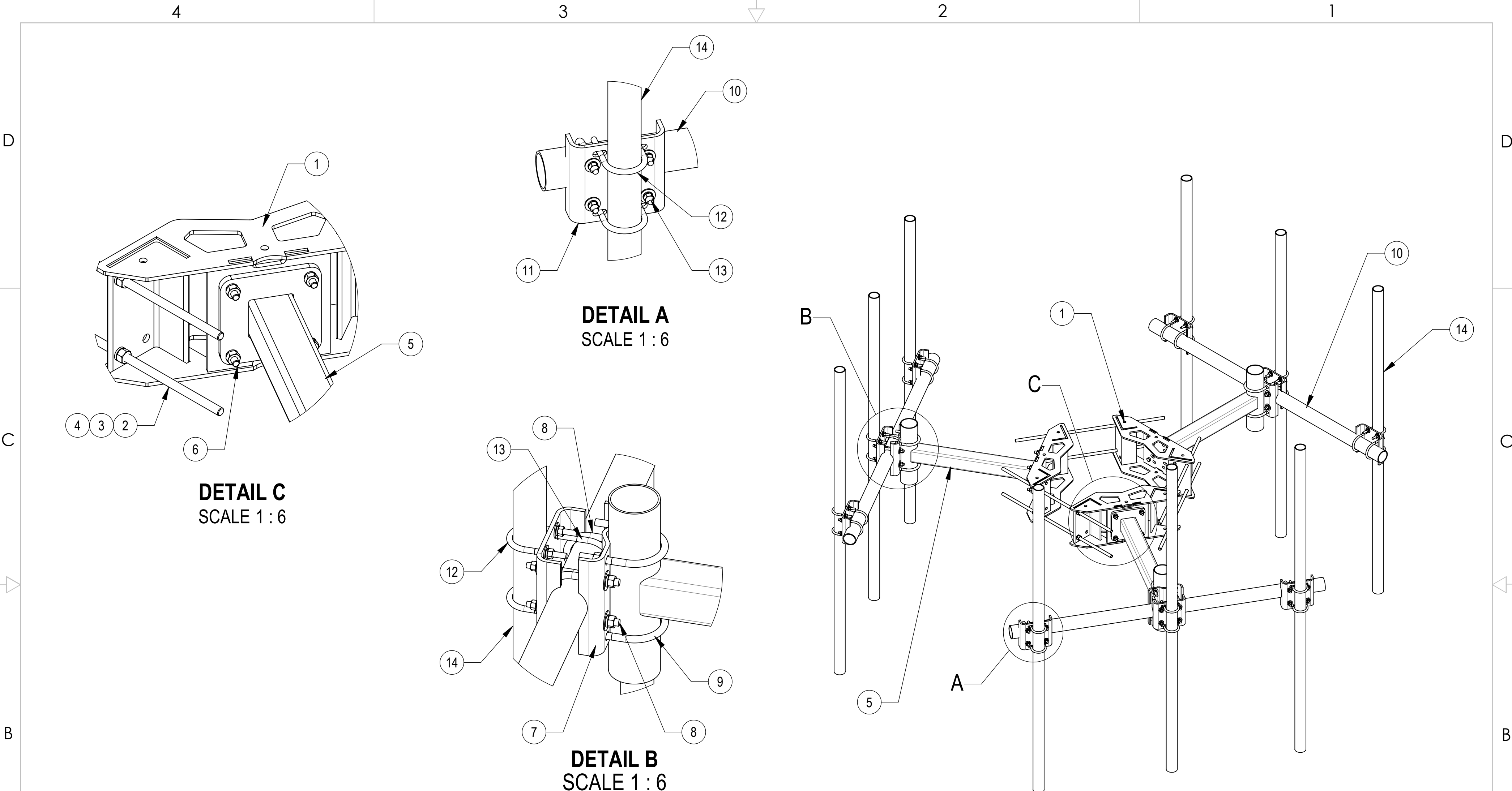
TITLE  
T-ARM, MCK6, 3, 4" x 84" , 9, 2-7/8"x96

SIZE: C      SCALE: 1:32      DOCUMENT NO.: MC-K6MHDX-9-96



DRAWING			SHEET 2 OF 3
VERSION	STATUS	REVISION	
01	RE	B	


Confidential



COMPONENT PART NUMBERS PROVIDED FOR ASSEMBLY PURPOSES;  
INDIVIDUAL COMPONENTS MAY BE SHIPPED AS PARTS WITHIN AN INCLUDED KIT.

ITEM	PART NO.	DESCRIPTION	QTY.	WEIGHT	NOTE NO.
1	RM1550301	15"-50" 3 SECTOR RM WLDMNT	3	65.93 LBS	
2	MT38440	3/4" X 40" GALV THREADED ROD GRADE B7	6	4.98 LBS	
3	GN-06	3/4" GALV HEX NUT	12	0.15 LBS	
4	GWL-06	3/4" GALV LOCK WASHER	12	0.04 LBS	
5	MT19701	36" SINGLE SUPPORT ARM	3	57.29 LBS	
6	GB-0524A	5/8" X 2-1/2" GALV BOLT KIT (A325)	12	0.30 LBS	
7	MT21613	CENTER BRACKET	3	11.87 LBS	
8	GUB-53560	5/8" X 3-5/8" X 6" GALV U-BOLT	6	1.30 LBS	
9	GUB-5456	5/8" X 4-5/8" X 6 1/2" GALV U-BOLT	6	1.43 LBS	
10	MTC333912	PIPE GALV, 3.5"OD X 84" X .216" A500C	3	52.75 LBS	
11	MT219H3501	3.5"OD CLAMP BRACKET	9	8.99 LBS	
12	GUB-4352	1/2" X 3" X 5-1/4" GALV U-BOLT	18	0.71 LBS	
13	GUB-4356	1/2" X 3-5/8" X 6" GALV U-BOLT	18	0.81 LBS	
14	MT54696	Ø 2.875" O.D. X 96 PIPE	9	45.55 LBS	

Confidential



**ANDREW**® an Amphenol company

TITLE

T-ARM, MCK6, 3, 4" x 84" , 9, 2-7/8"x96

SIZE

**C**

SCALE

**1:32**

DOCUMENT NO.

MC-K6MHDX-9-96

DRAWING

VERSION

01

STATUS

RE

REVISION

**B**

SHEET

3 OF 3