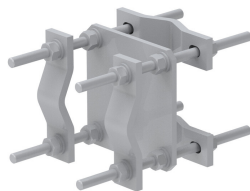


# CO-200

---



Crossover Plate, joins 1.5 in to 5 in OD round members (Pipe not included)

## Product Classification

Product Type	Clamp plate
Ordering Note	ANDREW® standard product (Global)
Warranty	One year

## General Specifications

Mounting	Crossover plate
Tower Taper	Non-tapered

## Dimensions

Height	254 mm   10 in
Width	304.8 mm   12 in
Length	203.2 mm   8 in
Mounting Diameter, maximum	127 mm   5 in
Mounting Diameter, minimum	38.1 mm   1.5 in

## Material Specifications

Material Type	Hot dip galvanized steel
---------------	--------------------------

## Packaging and Weights

Included	Clamps   Plates
Packaging quantity	1
Weight, net	9.8 kg   21.605 lb

## Regulatory Compliance/Certifications

Agency	Classification
ISO 9001:2015	Designed, manufactured and/or distributed under this quality management system

\* Footnotes

**Warranty** For more information, please consult our Product Warranty guidelines