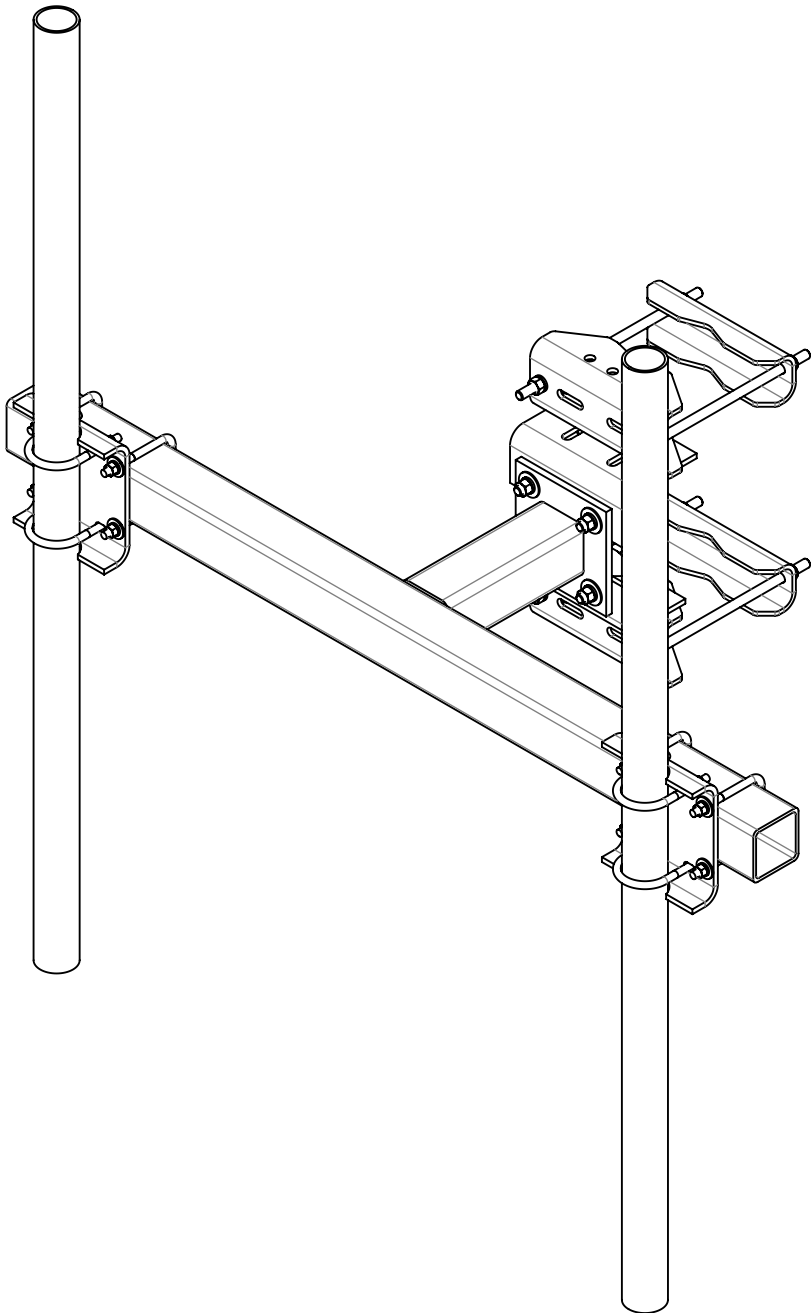
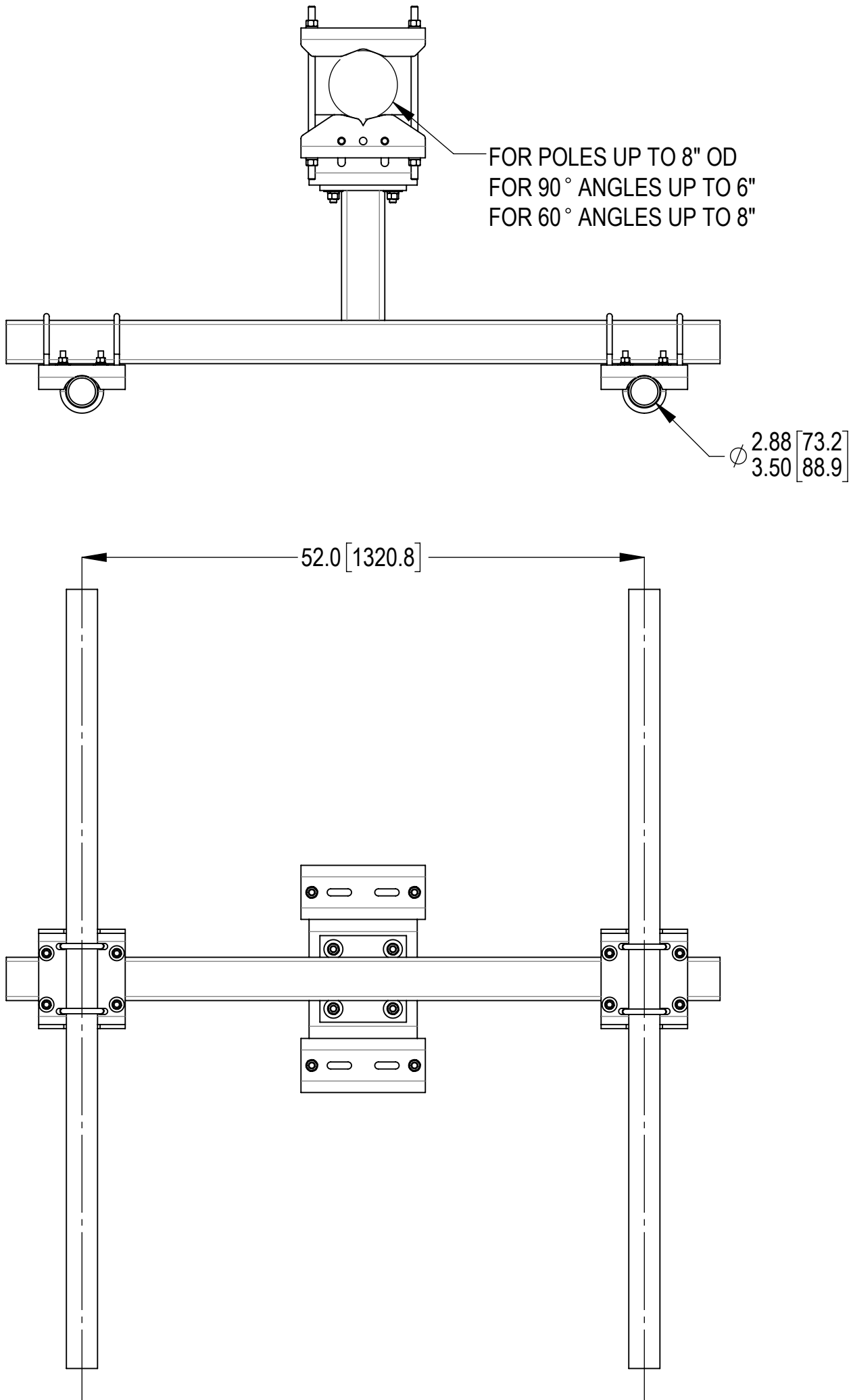


- 4
- 3
- 2
- 1
- 1.0 GENERAL NOTES
- 1.1 ALL METRIC DIMENSIONS ARE IN BRACKETS [X. X]
- 1.2 FOR PATENT INFO: <https://www.adwpat.com>
- 2.0 DESIGN NOTES
- 2.1 ANY HAZARDS OR OBSTRUCTIONS TO THE CLIMBING FACILITY AND SAFETY CLIMB MUST BE IDENTIFIED PRIOR TO INSTALLING THE APPURTENANCE. ADDITIONAL PRODUCTS MAY BE REQUIRED TO MAINTAIN THE INTEGRITY OF THE SAFETY CLIMB. DURING INSTALLATION, TEMPORARY AND/OR PERMANENT PRECAUTIONARY MEASURES SHOULD BE TAKEN TO PRESERVE THE CLIMBING FACILITY AND/OR SAFETY CLIMB.
- 3.0 MANUFACTURING/SPECIAL REQUIREMENTS
- 3.1 TIGHTEN ALL BOLTS SECURING FLAT PLATES BY THE TURN-OF-NUT METHOD. TIGHTEN ALL U-BOLTS USING TURN-OF-NUT METHOD WITH ATTENTION TO LEAVE EQUAL DISTANCE AND EQUAL FORCE ON EACH LEG OF THE U-BOLT.
- 4.0 TEST
- 5.0 PACKAGING
- 5.1 PACKAGING SHALL MEET ANDREW REQUIREMENTS PER DOCUMENT IS-PL-3005
- 5.2 PRINTED DOCUMENT TO BE PLACED INSIDE POLYBAG AND THEN IN SHIPPING CONTAINER
- 5.3 EXTRA HARDWARE MAY BE SUPPLIED, BAGGED AND SHIPPED


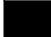


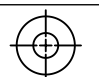
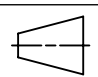
TABLE 1: CONFIGURATIONS											
PART NUMBER	WEIGHT (LBS)	INCLUDED PARTS									
		SM-U2080	MTC306501	SFHPM3BHK	SFHPM35BHK	MT54672	MT54696	MT-546-126	MT54772	MT54796	MT-547-126
SF-HPM3-B	177.25	1	1	1	-	-	-	-	-	-	-
SF-HPM3-72	242.99	1	1	1	-	2	-	-	-	-	-
SF-HPM3-96	269.18	1	1	1	-	-	2	-	-	-	-
SF-HPM3-126	299.35	1	1	1	-	-	-	2	-	-	-
SF-HPM35-B	178.01	1	1	-	1	-	-	-	-	-	-
SF-HPM35-72	250.82	1	1	-	1	-	-	-	2	-	-
SF-HPM35-96	275.09	1	1	-	1	-	-	-	-	2	-
SF-HPM35-126	301.87	1	1	-	1	-	-	-	-	-	2



SF-HPM3-72 SHOWN FOR REFERENCE
(SEE TABLE 1 FOR ALL CONFIGURATIONS)



REVISIONS			
REV.	DESCRIPTION	DATE	APPROVED
A	INITIAL RELEASE	DRR 16NOV11	TP
B	REDRAWN IN SOLIDWORKS	YMENG 12DEC23	BCROSS 40184974CMO
C	SIMPLIFIED SERIES DRAWING	YC1059 18AUG25	BA1025 50104477AMO

<div>ANDREW® an Amphenol company</div>																	
TOLERANCES						SAP MATERIAL MASTER											
1 PLACE .X[X] ± .12[3.0]			3 PLACE .XXX[X] ± .031[0.8]			SEE TABLE 1											
2 PLACE .XX[X] ± .06[1.5]			ANGLES ± 2°														
FINISH					MATERIAL												
UNLESS OTHERWISE SPECIFIED DIMENSIONS ARE IN INCHES INTERPRET PER ANSI Y 14.5M-1994		NAME	DATE	HEAVY DUTY SQ T-ARM SERIES													
	CE	DRR	16DEC11														
	RW	YC1059	08/18/2025														
																	
	AD	YMENG	08/21/2025	SCALE 1:16		SF-HPM SERIES											
	RE	YMENG	08/21/2025														
	ECN 50104477AMO																
	DENSITY			lbs/in³													
MASS			lbs														
VOLUME			in³														
SURFACE AREA			in²														
HEIGHT																	
SIZE		Auth Group	INSL	MODEL			DRAWING			SHEET 1 OF 1							
C			VERSION	STATUS	REVISION	VERSION	STATUS	REVISION									
			00	RE	B	01	RE	C									

Confidential