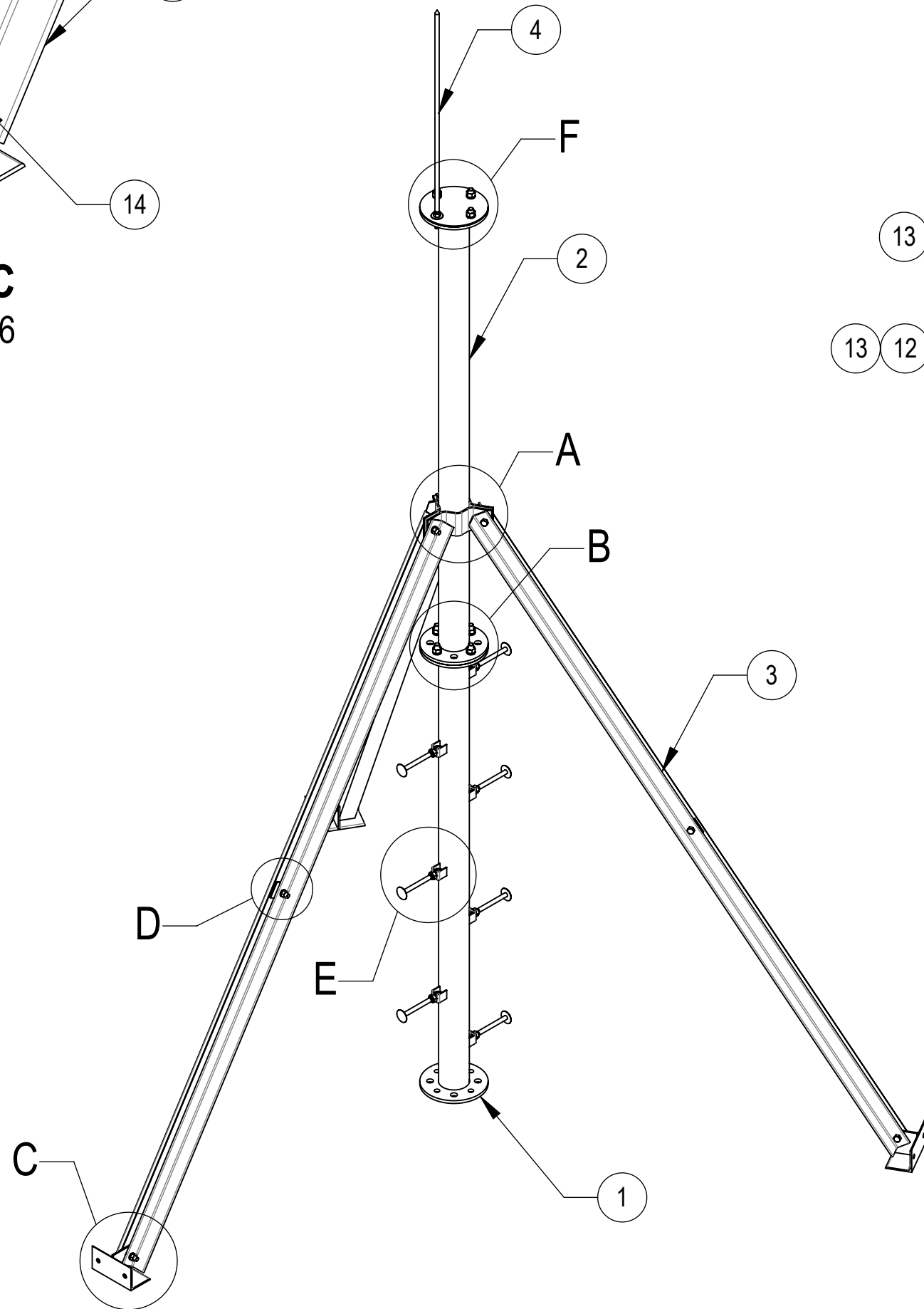
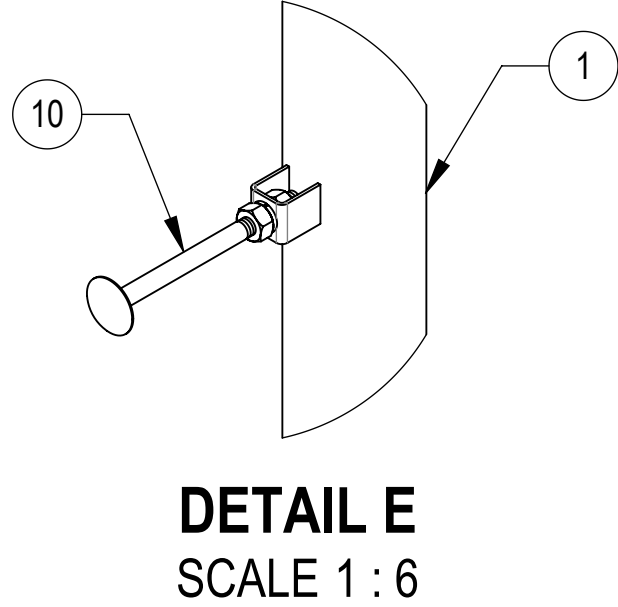
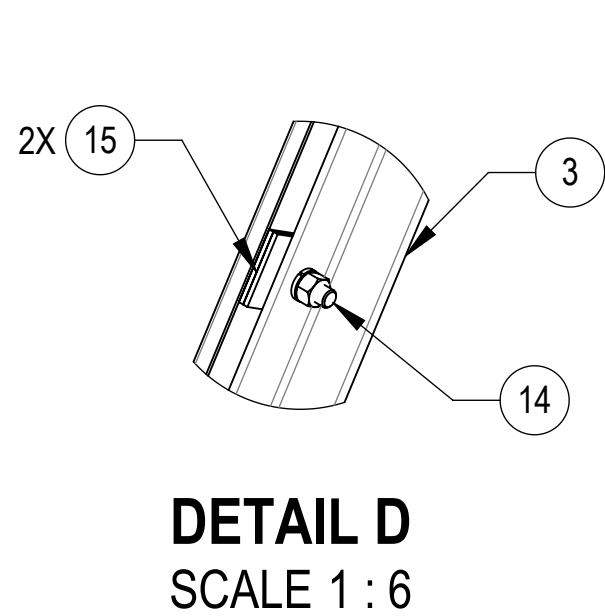
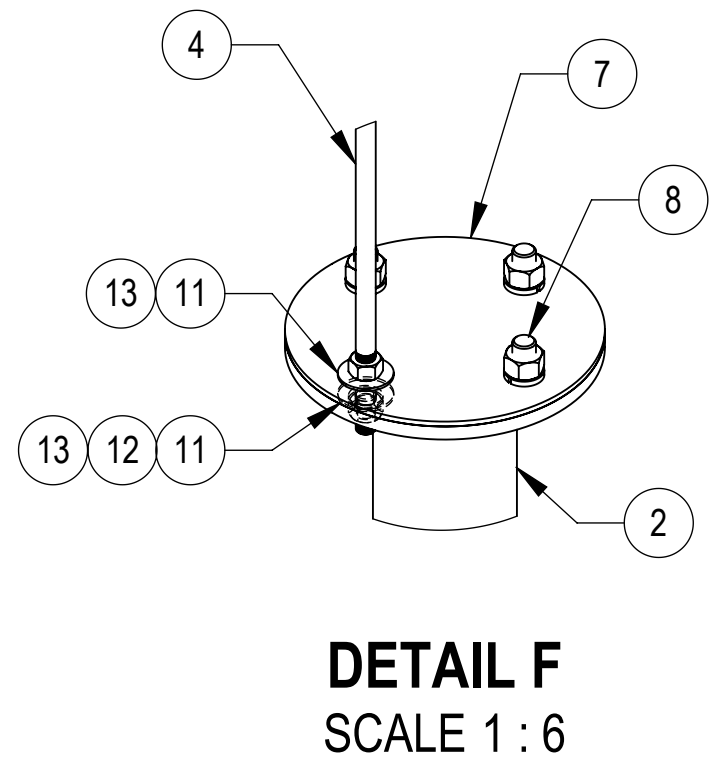
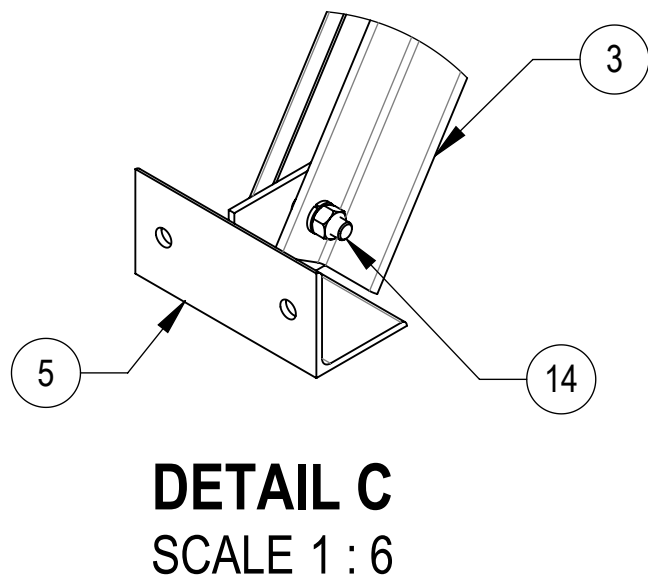
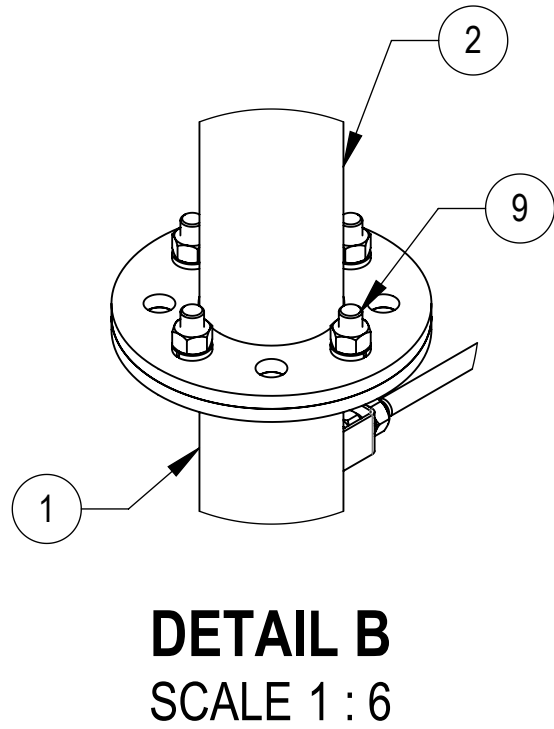
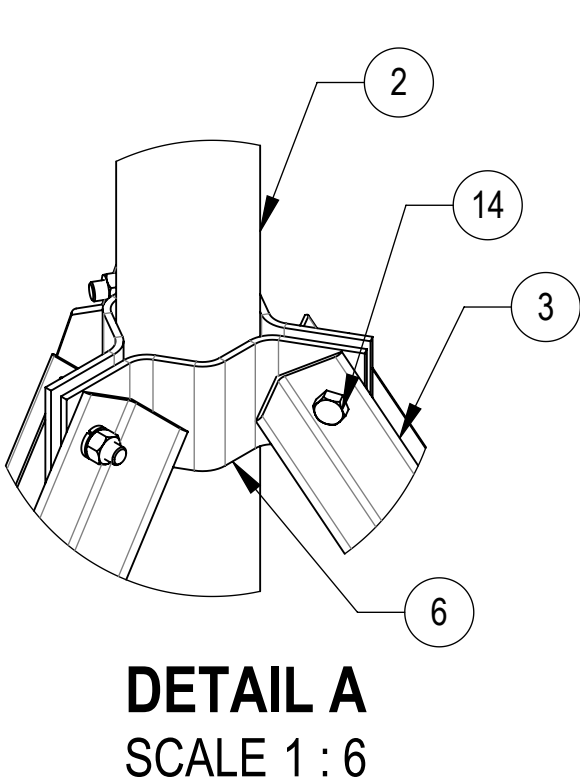




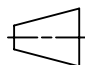
- 1.0 GENERAL NOTES
- 1.1 ALL METRIC DIMENSIONS ARE IN BRACKETS [X. X]
- 1.2 FOR PATENT INFO: <https://www.adwpat.com>
- 2.0 DESIGN NOTES
- 2.1 ANY HAZARDS OR OBSTRUCTIONS TO THE CLIMBING FACILITY AND SAFETY CLIMB MUST BE IDENTIFIED PRIOR TO INSTALLING THE APPURTENANCE. ADDITIONAL PRODUCTS MAY BE REQUIRED TO MAINTAIN THE INTEGRITY OF THE SAFETY CLIMB. DURING INSTALLATION, TEMPORARY AND/OR PERMANENT PRECAUTIONARY MEASURES SHOULD BE TAKEN TO PRESERVE THE CLIMBING FACILITY AND/OR SAFETY CLIMB.
- 3.0 MANUFACTURING/SPECIAL REQUIREMENTS
- 3.1 TIGHTEN ALL BOLTS SECURING FLAT PLATES BY THE TURN-OF-NUT METHOD. TIGHTEN ALL U-BOLTS USING TURN-OF-NUT METHOD WITH ATTENTION TO LEAVE EQUAL DISTANCE AND EQUAL FORCE ON EACH LEG OF THE U-BOLT.
- 4.0 TEST
- 5.0 PACKAGING
- 5.1 PACKAGING SHALL MEET ANDREW REQUIREMENTS PER DOCUMENT IS-PL-3005
- 5.2 PRINTED DOCUMENT TO BE PLACED INSIDE POLYBAG AND THEN IN SHIPPING CONTAINER
- 5.3 EXTRA HARDWARE MAY BE SUPPLIED, BAGGED AND SHIPPED



COMPONENT PART NUMBERS PROVIDED FOR ASSEMBLY PURPOSES;  
INDIVIDUAL COMPONENTS MAY BE SHIPPED AS PARTS WITHIN AN INCLUDED KIT.

ITEM	PART NO.	DESCRIPTION	QTY.	WEIGHT	NOTE NO.
1	MTC9962B201	POLE WELDMENT 2M	1	87.33 LBS	
2	MTC9962T201	POLE WELDMENT 2M T2	1	85.82 LBS	
3	MTC996202	ANGLE BRACE	6	30.20 LBS	
4	MTC57501M01	GALV ROD 5/8" X 39"	1	3.34 LBS	
5	MTC996203	SUPPORT FOOT	3	5.42 LBS	
6	TPG412B02	4-1/2" TRIPOD CLAMP	3	3.05 LBS	
7	RT-MPT-C	CAP	1	4.04 LBS	
8	GB-06205	3/4" X 2" GALV BOLT KIT	3	0.40 LBS	
9	GB-06245	3/4" X 2-1/2" GALV BOLT KIT	4	0.47 LBS	
10	MT750	STEP BOLT	7	1.14 LBS	
11	GWF-05	5/8" GALV FLAT WASHER, 1.7OD	2	0.06 LBS	
12	GWL-05	5/8" GALV LOCK WASHER	1	0.03 LBS	
13	GN-05	5/8" GALV HEX NUT	2	0.08 LBS	
14	GB-05245	5/8" X 2-1/2" GALV BOLT KIT	9	0.30 LBS	
15	SW-58	BACKING PLATE, .188" X 2.5" X 2.5" W/ 11/16" HOLE	6	0.31 LBS	

DENSITY	405.36	lbs/in <sup>3</sup>
MASS	1438.30	lbs
VOLUME	1438.30	in <sup>3</sup>
SURFACE AREA	13532.44	in <sup>2</sup>
HEIGHT	194"	
LENGTH	126"	
WIDTH	110"	

<div><b>ANDREW</b>® an Amphenol company</div>										
TOLERANCES						SAP MATERIAL MASTER				
1 PLACE .X[X] ± 0.12[3.0]			3 PLACE .XXX[X] ± 0.030[0.8]			RT-MPT-4				
2 PLACE .XX[X] ± 0.06[1.5]			ANGLES ± 2°							
FINISH					MATERIAL					
UNLESS OTHERWISE SPECIFIED DIMENSIONS ARE IN INCHES INTERPRET PER ANSI Y 14.5M-1994		NAME	DATE	TITLE  4M MODULAR ROOF TOP POLE						
	CE	OGG	04/03/10							
	RW	RY1002	09/12/2025							
					SCALE 1:20					
	AD	YMENG	09/17/2025							
	RE	YMENG	09/18/2025							
	ECN 50104902AMO									
SIZE		Auth Group	INSL	MODEL			DRAWING			SHEET 1 OF 1
C			VERSION	STATUS	REVISION	VERSION	STATUS	REVISION		
			00	RE	A	00	RE	B		

Confidential