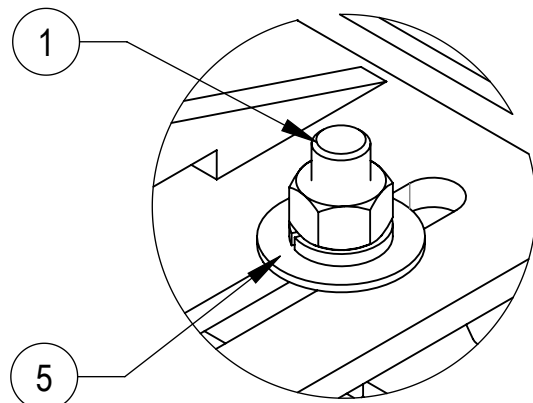
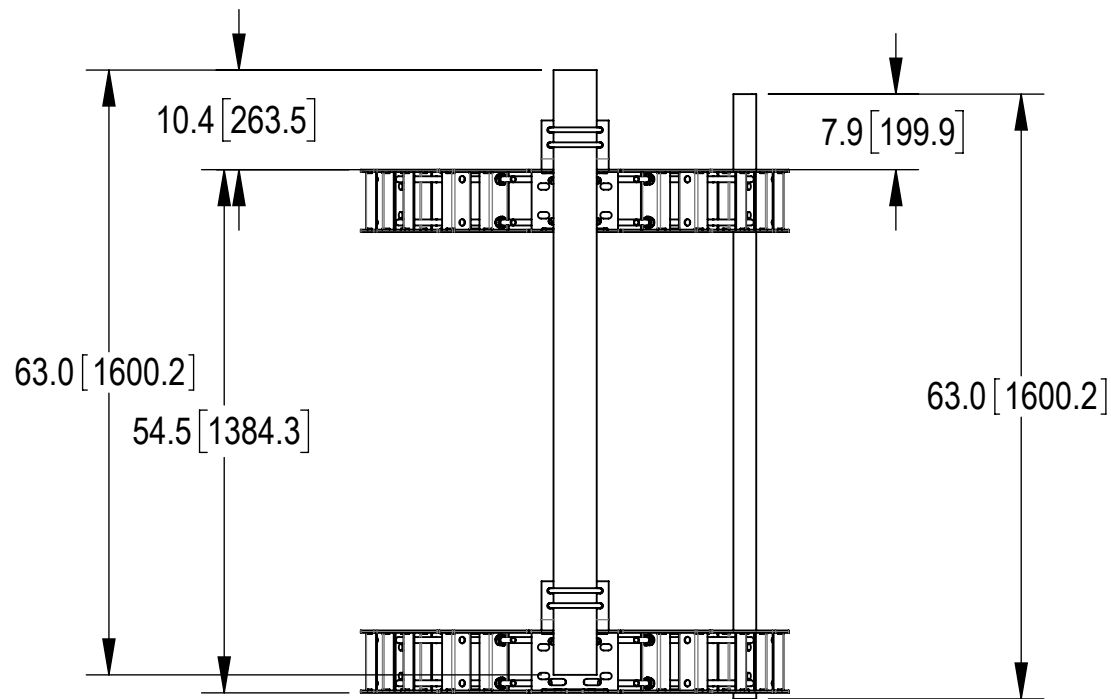
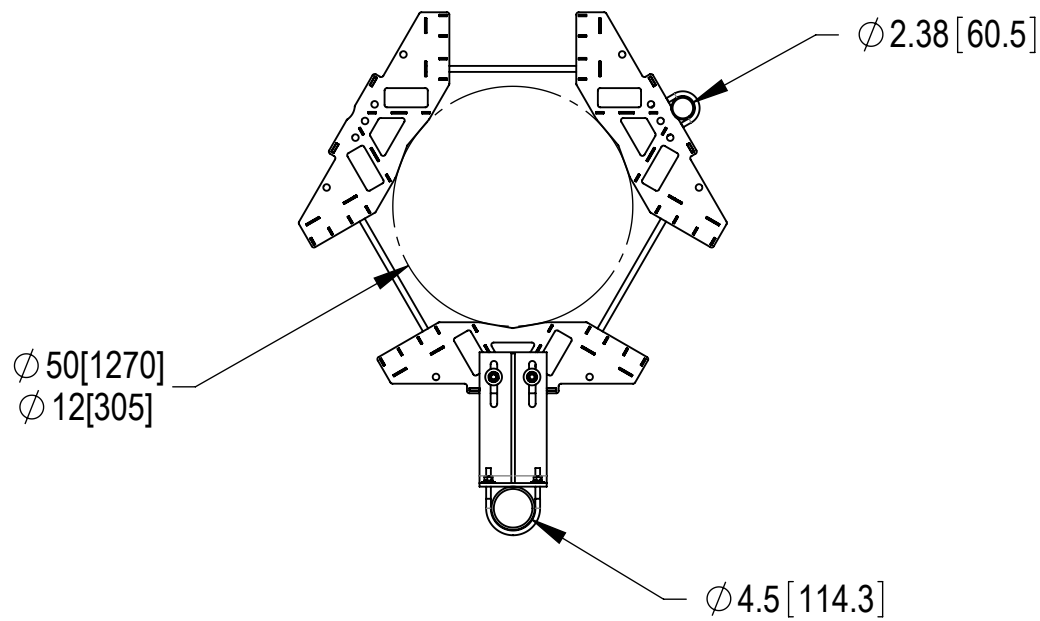
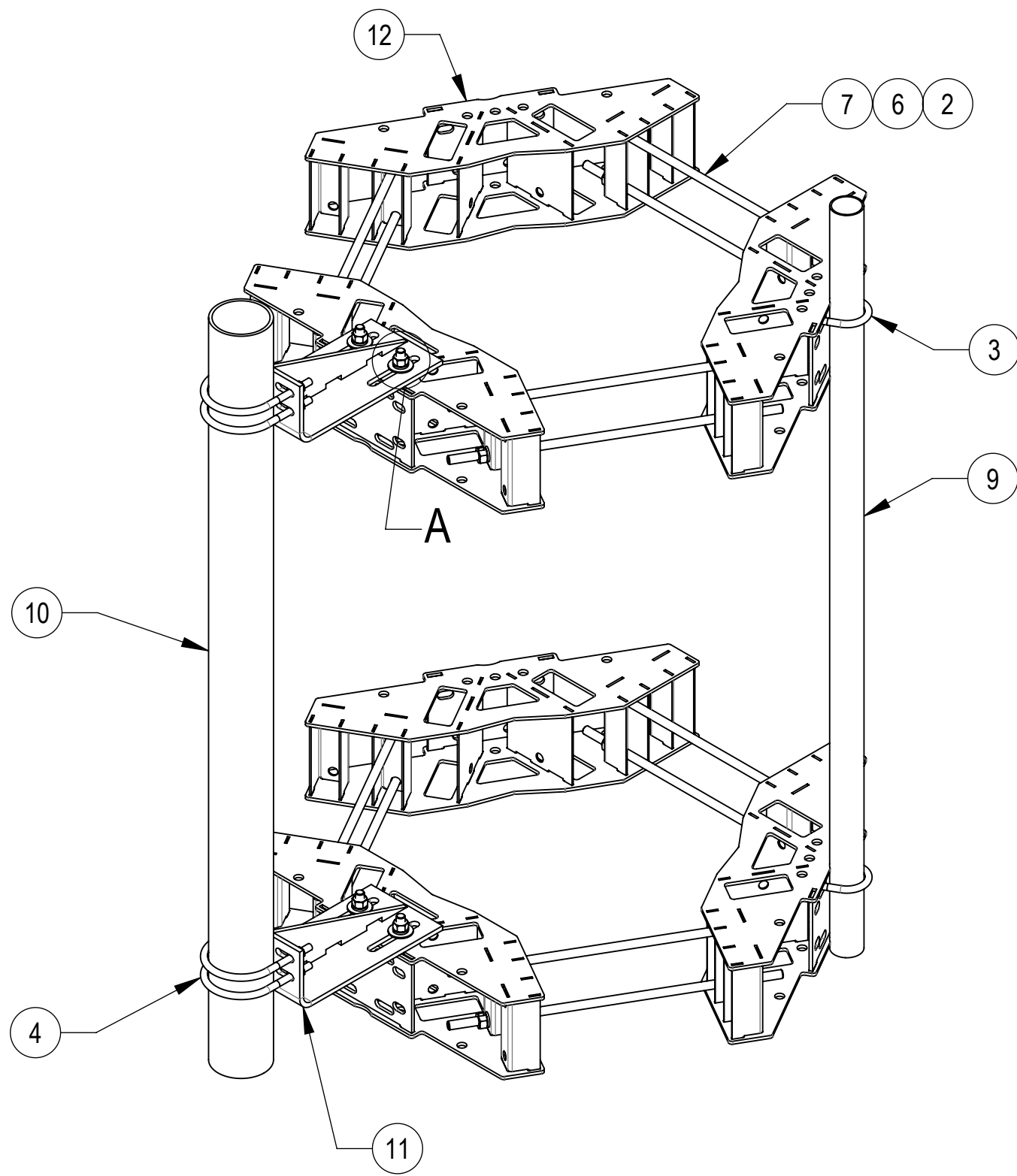


1.0 GENERAL NOTES
1.1 ALL METRIC DIMENSIONS ARE IN BRACKETS [X. X]
1.2 FOR PATENT INFO: <https://www.adwpat.com>
2.0 DESIGN NOTES
2.1 ANY HAZARDS OR OBSTRUCTIONS TO THE CLIMBING FACILITY AND SAFETY CLIMB MUST BE IDENTIFIED PRIOR TO INSTALLING THE APPURTENANCE. ADDITIONAL PRODUCTS MAY BE REQUIRED TO MAINTAIN THE INTEGRITY OF THE SAFETY CLIMB. DURING INSTALLATION, TEMPORARY AND/OR PERMANENT PRECAUTIONARY MEASURES SHOULD BE TAKEN TO PRESERVE THE CLIMBING FACILITY AND/OR SAFETY CLIMB.
2.2 FITS MONOPOLES 12"-50" O.D.
2.3 MT38240 USED FOR MONOPOLES 30"-50" O.D.
3.0 MANUFACTURING/SPECIAL REQUIREMENTS
3.1 TIGHTEN ALL BOLTS SECURING FLAT PLATES BY THE TURN-OF-NUT METHOD. TIGHTEN ALL U-BOLTS USING TURN-OF-NUT METHOD WITH ATTENTION TO LEAVE EQUAL DISTANCE AND EQUAL FORCE ON EACH LEG OF THE U-BOLT.
3.2 TORQUE TO 115-125 FT-LBS
4.0 TEST
5.0 PACKAGING
5.1 PACKAGING SHALL MEET ANDREW REQUIREMENTS PER DOCUMENT IS-PL-3005
5.2 PRINTED DOCUMENT TO BE PLACED INSIDE POLYBAG AND THEN IN SHIPPING CONTAINER
5.3 EXTRA HARDWARE MAY BE SUPPLIED, BAGGED AND SHIPPED







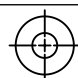
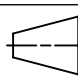
DETAIL A
SCALE 1 : 2



COMPONENT PART NUMBERS PROVIDED FOR ASSEMBLY PURPOSES;
INDIVIDUAL COMPONENTS MAY BE SHIPPED AS PARTS WITHIN AN INCLUDED KIT.

ITEM	PART NO.	DESCRIPTION	QTY.	WEIGHT	NOTE NO.
1	GB-0520A	5/8" X 2" GALV BOLT KIT (A325)	4	0.26 LBS	
2	GN-05A	5/8" GALV HEX NUT (A194 2H)	24	0.12 LBS	
3	GUB-4240	1/2" X 2-1/2" X 4" GALV U-BOLT	2	0.56 LBS	
4	GUB-4456	1/2" X 4-5/8" X 6-1/2" GALV U-BOLT	4	0.90 LBS	
5	GW-05	5/8" GALV FLAT WASHER, 1.70D	4	0.06 LBS	
6	GWL-05	5/8" GALV LOCK WASHER	24	0.03 LBS	
7	MT-382-24	5/8" X 24" GALV THREADED ROD	12	2.07 LBS	
8	MT38240	5/8" X 40" GALV THREADED ROD	12	3.46 LBS	2.3
9	MT-650-63	2.375" OD x 63" PIPE	1	15.26 LBS	
10	MT-653-63	4.5" O.D. X 63" PIPE	1	57.02 LBS	
11	MTC315902	14IN L-BRACKET	2	15.46 LBS	
12	MTC328606	WELDMENT, MEDIUM DUTY 10-50 RINGMOUNT	6	28.79 LBS	

DENSITY	MASS	353.28	lbs/in³
VOLUME	2176.58	lbs	
SURFACE AREA	15996.65	in³	
HEIGHT	64.9"		
LENGTH	(41.5")		
WIDTH	(51.8")		

<div>ANDREW[®] an Amphenol company</div>																	
TOLERANCES						SAP MATERIAL MASTER											
1 PLACE		.X[X] ± 0.25[6.3]		3 PLACE		.XXX[X] ± 0.06[1.5]		RM-DM-6									
2 PLACE		.XX[X] ± 0.12[3.0]		ANGLES		± 2°											
FINISH					MATERIAL												
UNLESS OTHERWISE SPECIFIED DIMENSIONS ARE IN INCHES INTERPRET PER ANSI Y 14.5M-1994		NAME		DATE		TITLE 6' MICROWAVE 12"-50" MONOPOLE MOUNT											
	CE	MRC		07/15/19													
	RW	YC1059		07/11/2025													
																	
	AD	YMENG		07/11/2025													
	RE	YMENG		07/11/2025													
ECN 50103872AMO						SCALE 1:10		DOCUMENT NO. RM-DM-6									
SIZE		Auth Group		INSL		MODEL			DRAWING			SHEET 1 OF 2					
C						VERSION 02		STATUS RE		REVISION C				VERSION 02		STATUS RE	

Confidential

4

3

2

1

D

D

C

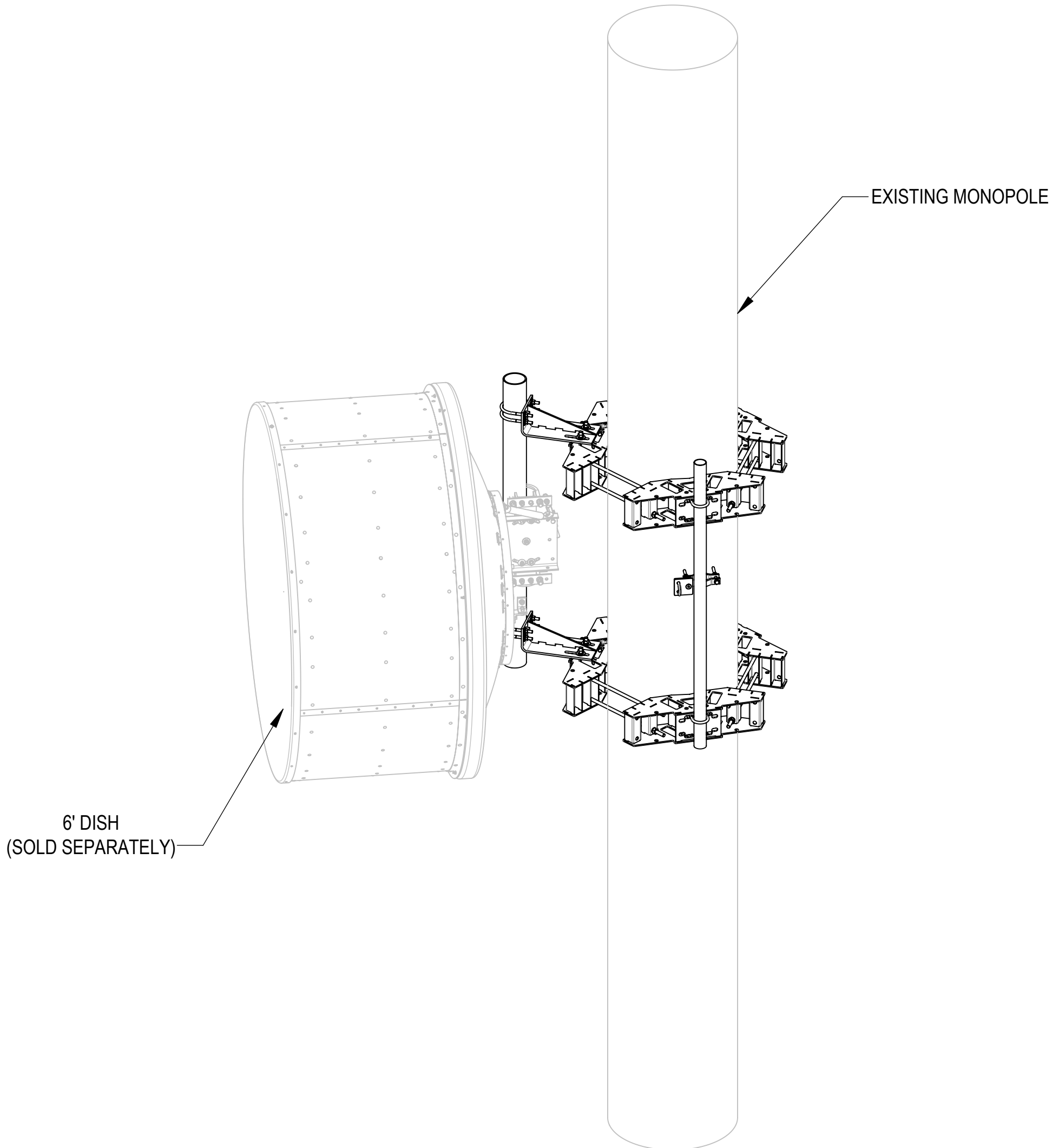
C

B

B

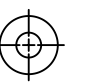
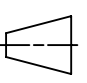
A

A



TITLE
6' MICROWAVE 12"-50" MONOPOLE MOUNT

SIZE C	SCALE 1:20	DOCUMENT NO. RM-DM-6		
------------------	----------------------	-------------------------	--	--

 	DRAWING			SHEET 2 OF 2
	VERSION 02	STATUS RE	REVISION C	

Confidential