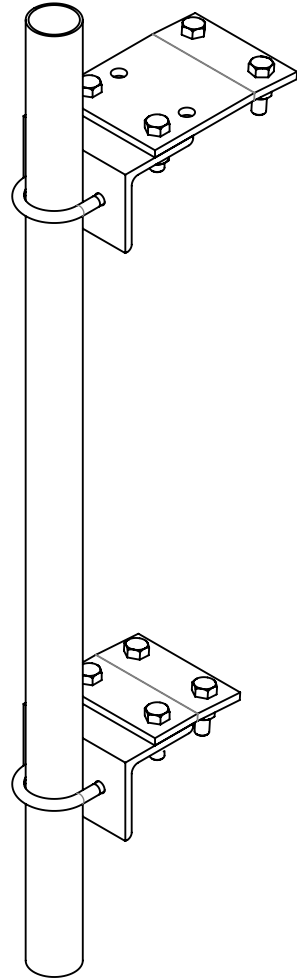
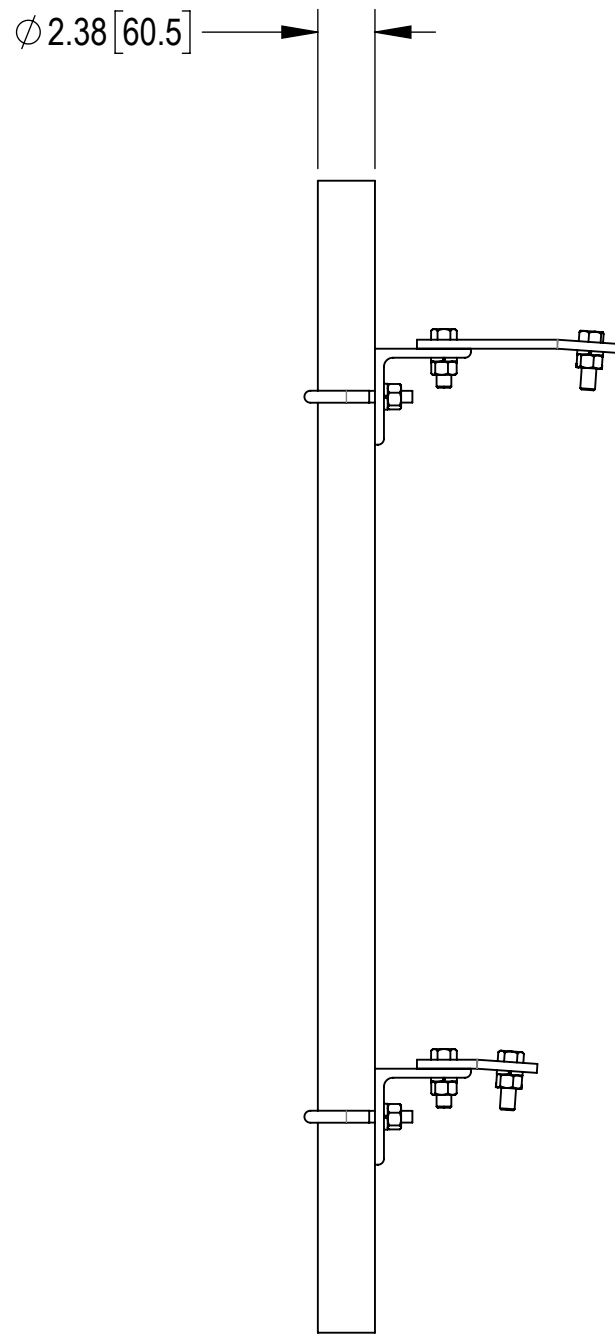
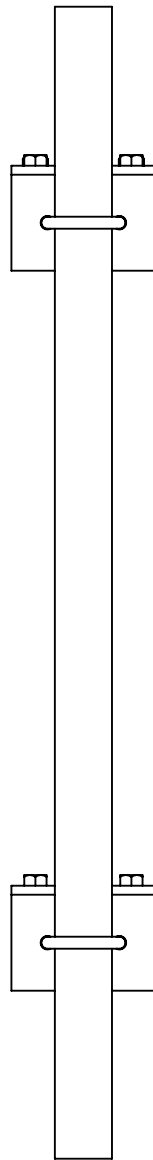
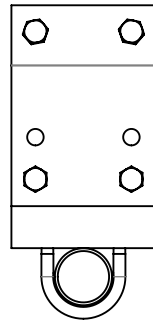


- 1.0 GENERAL NOTES
 - 1.1 ALL METRIC DIMENSIONS ARE IN BRACKETS [X. X]
 - 1.2 FOR PATENT INFO: <https://www.adwpat.com>
- 2.0 DESIGN NOTES
- 3.0 MANUFACTURING/SPECIAL REQUIREMENTS
 - 3.1 TIGHTEN ALL BOLTS SECURING FLAT PLATES BY THE TURN-OF-NUT METHOD. TIGHTEN ALL U-BOLTS USING TURN-OF-NUT METHOD WITH ATTENTION TO LEAVE EQUAL DISTANCE AND EQUAL FORCE ON EACH LEG OF THE U-BOLT.
- 4.0 TEST
- 5.0 PACKAGING
 - 5.1 PACKAGING SHALL MEET ANDREW REQUIREMENTS PER DOCUMENT IS-PL-3005
 - 5.2 PRINTED DOCUMENT TO BE PLACED INSIDE POLYBAG AND THEN IN SHIPPING CONTAINER
 - 5.3 EXTRA HARDWARE MAY BE SUPPLIED, BAGGED AND SHIPPED






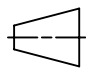
REVISIONS			
REV.	DESCRIPTION	DATE	APPROVED
A	INITIAL RELEASE	AW 27JAN05	TP
B	UPDATED DRAWING TO NEW FORMAT	JJ1095 20AUG25	BA1025 50104530AMO



PM-238T-48 SHOWN FOR REFERENCE
(SEE TABLE FOR ALL CONFIGURATIONS)

TABLE: CONFIGURATIONS						
PART NUMBER	WEIGHT	INCLUDED PARTS				
		PM238TB	MT-650	MT-651	MT-651-84	MT-651-96
PM-238T-48	33.71 LBS	1	1	-	-	-
PM-238T-72	39.53 LBS	1	-	1	-	-
PM-238T-84	42.44 LBS	1	-	-	1	-
PM-238T-96	45.34 LBS	1	-	-	-	1

DENSITY	lbs/in ³
MASS	lbs
VOLUME	in ³
SURFACE AREA	in ²
HEIGHT	
LENGTH	
WIDTH	

<div></div>									
TOLERANCES					SAP MATERIAL MASTER				
1 PLACE .X[X] ± 0.2[6.3]			3 PLACE .XXX[X] ± 0.060[1.5]		SEE TABLE				
2 PLACE .XX[X] ± 0.12[3.0]			ANGLES ± 2°						
FINISH				MATERIAL					
UNLESS OTHERWISE SPECIFIED DIMENSIONS ARE IN INCHES INTERPRET PER ANSI Y 14.5M-1994		NAME	DATE	2-3/8" TAPERED PIPE MOUNT					
	CE	JJ1095	20AUG25						
	RW	JJ1095	08/21/2025						
									
	AD	BA1025	08/22/2025						
	RE	YMENG	08/22/2025	SCALE	DOCUMENT NO. PM-238T SERIES				
	ECN 50104530AMO			1:8					
	SIZE	Auth Group	INSL	MODEL			DRAWING		
C			VERSION	STATUS	REVISION	VERSION	STATUS	REVISION	
			00	RE	A	00	RE	B	