

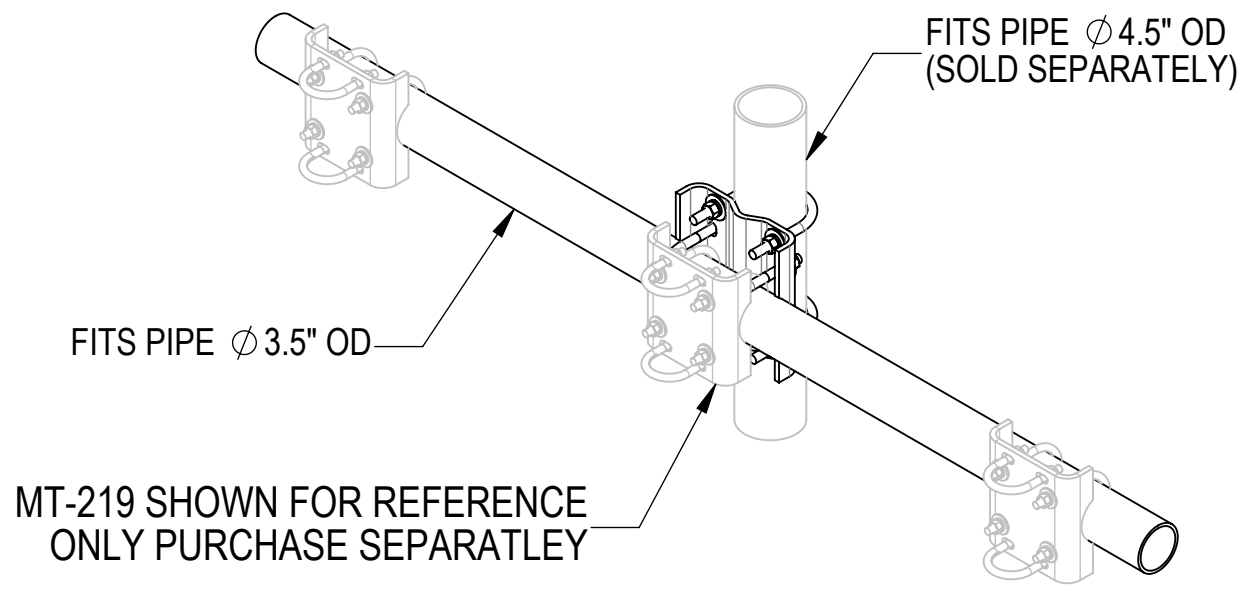
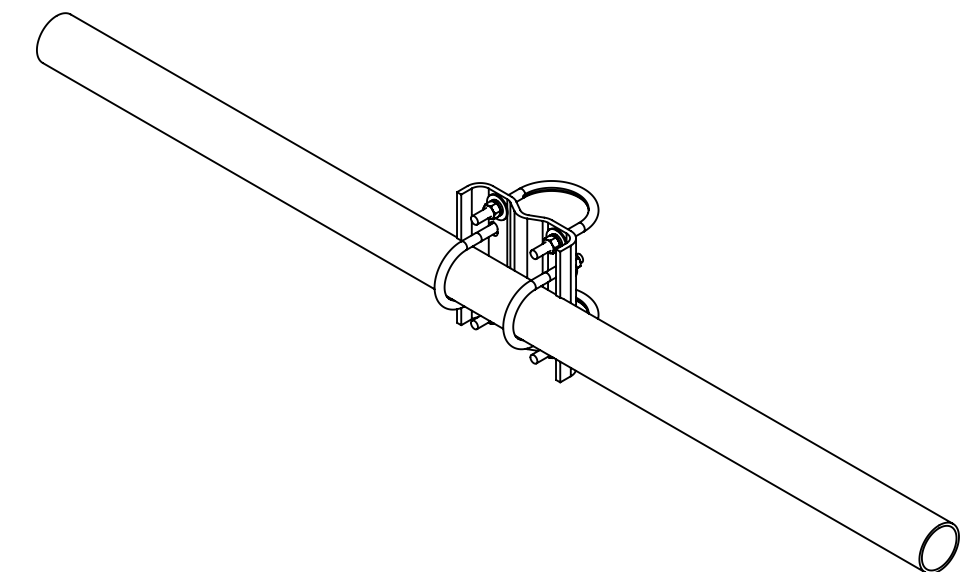
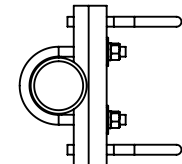
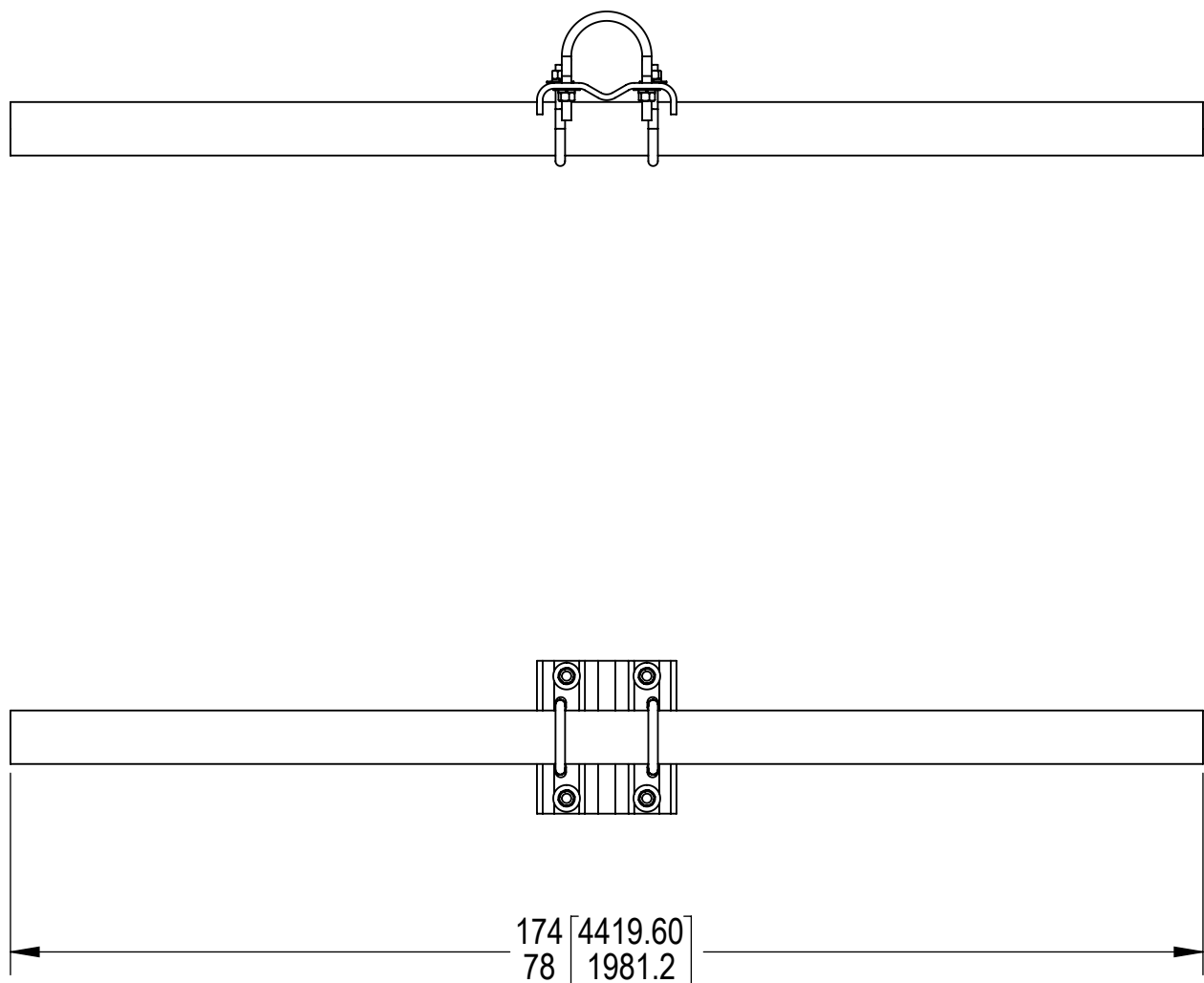
D

C

B

A

1.0 GENERAL NOTES
1.1 ALL METRIC DIMENSIONS ARE IN BRACKETS [X. X]
1.2 FOR PATENT INFO: <https://www.adwpat.com>
2.0 DESIGN NOTES
2.1 ANY HAZARDS OR OBSTRUCTIONS TO THE CLIMBING FACILITY AND SAFETY CLIMB MUST BE IDENTIFIED PRIOR TO INSTALLING THE APPURTENANCE. ADDITIONAL PRODUCTS MAY BE REQUIRED TO MAINTAIN THE INTEGRITY OF THE SAFETY CLIMB. DURING INSTALLATION, TEMPORARY AND/OR PERMANENT PRECAUTIONARY MEASURES SHOULD BE TAKEN TO PRESERVE THE CLIMBING FACILITY AND/OR SAFETY CLIMB.
3.0 MANUFACTURING/SPECIAL REQUIREMENTS
3.1 TIGHTEN ALL BOLTS SECURING FLAT PLATES BY THE TURN-OF-NUT METHOD. TIGHTEN ALL U-BOLTS USING TURN-OF-NUT METHOD WITH ATTENTION TO LEAVE EQUAL DISTANCE AND EQUAL FORCE ON EACH LEG OF THE U-BOLT.
4.0 TEST
5.0 PACKAGING
5.1 PACKAGING SHALL MEET ANDREW REQUIREMENTS PER DOCUMENT IS-PL-3005
5.2 PRINTED DOCUMENT TO BE PLACED INSIDE POLYBAG AND THEN IN SHIPPING CONTAINER
5.3 EXTRA HARDWARE MAY BE SUPPLIED, BAGGED AND SHIPPED




PART NUMBERS & WEIGHTS

TABLE 1						
PART NUMBER	DESCRIPTION	WEIGHT (LBS)	INCLUDED PARTS			
			MT216NSH	MTC908511	MT-547-126	MT21601
MT-216-6NS	CELLULAR PIPE FRAME, 6' 6" FACE, NO SA	56.64	1	1	-	-
MT-216-10NS	CELLULAR PIPE FRAME, 10' 6" FACE, NO SA	80.57	1	-	1	-
MT-216-NS	CELLULAR PIPE FRAME, 12'6" FACE	94.49	1	-	-	1
MT-216-14NS	CELLULAR PIPE FRAME, 14', NOSTIFFARM	104.17	1	-	-	1

Confidential

DENSITY	lbs/in³
MASS	lbs
VOLUME	in³
SURFACE AREA	in²
HEIGHT	
LENGTH	
WIDTH	



TOLERANCES

1 PLACE .X[X] ± 0.12[3.0] 3 PLACE .XXX[X] ± 0.03[0.8]
2 PLACE .XX[X] ± 0.06[1.5] ANGLES ± 2°

SAP MATERIAL MASTER

SEE TABLE 1

FINISH

MATERIAL

UNLESS OTHERWISE SPECIFIED
DIMENSIONS ARE IN INCHES
INTERPRET PER ANSI Y 14.5M-1994

	NAME	DATE	TITLE
CE	LAP	24JUL01	CELLULAR PIPE FRAME
RW	YX1027	08/27/2025	
AD	YMENG	08/28/2025	
RE	YMENG	08/29/2025	SCALE 1:12 DOCUMENT NO. MT-216-NS SERIES
ECN	50104621AMO		

SIZE	Auth Group	INSL	MODEL			DRAWING			SHEET 1 OF 1
C			VERSION 02	STATUS RE	REVISION F	VERSION 01	STATUS RE	REVISION E	

D

C

B

A