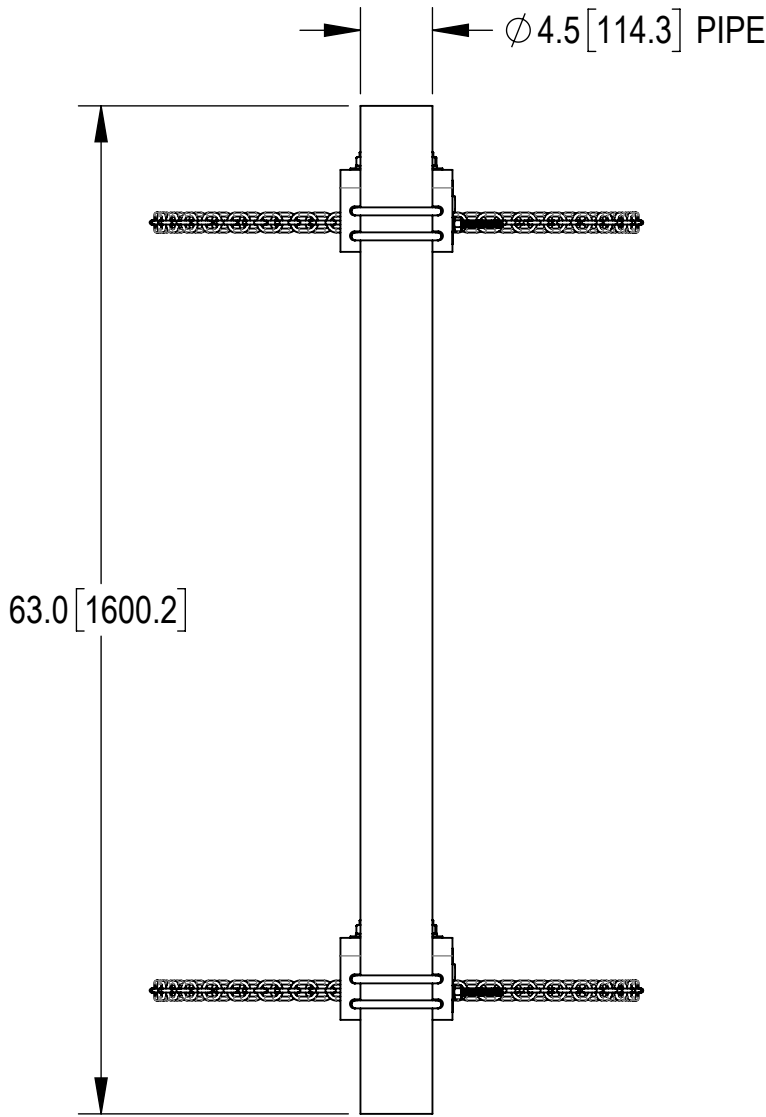
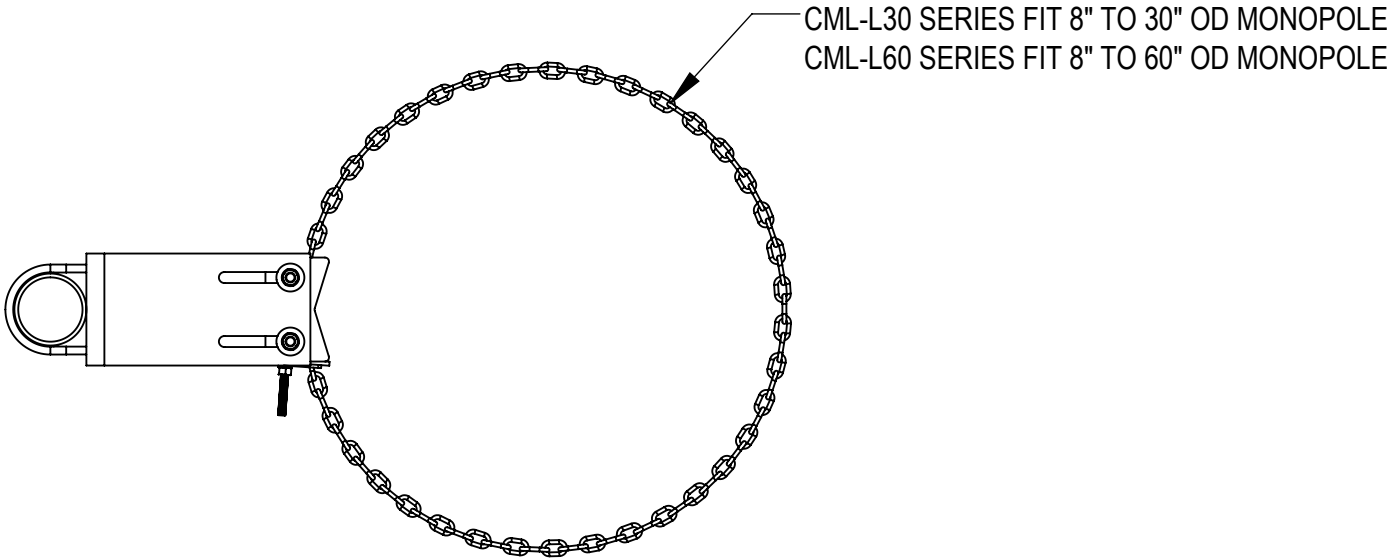


- 1.0 GENERAL NOTES
- 1.1 ALL METRIC DIMENSIONS ARE IN BRACKETS [X. X]
- 1.2 FOR PATENT INFO: <https://www.adwpat.com>
- 2.0 DESIGN NOTES
- 2.1 ANY HAZARDS OR OBSTRUCTIONS TO THE CLIMBING FACILITY AND SAFETY CLIMB MUST BE IDENTIFIED PRIOR TO INSTALLING THE APPURTENANCE. ADDITIONAL PRODUCTS MAY BE REQUIRED TO MAINTAIN THE INTEGRITY OF THE SAFETY CLIMB. DURING INSTALLATION, TEMPORARY AND/OR PERMANENT PRECAUTIONARY MEASURES SHOULD BE TAKEN TO PRESERVE THE CLIMBING FACILITY AND/OR SAFETY CLIMB.
- 3.0 MANUFACTURING/SPECIAL REQUIREMENTS
- 3.1 TIGHTEN ALL BOLTS SECURING FLAT PLATES BY THE TURN-OF-NUT METHOD. TIGHTEN ALL U-BOLTS USING TURN-OF-NUT METHOD WITH ATTENTION TO LEAVE EQUAL DISTANCE AND EQUAL FORCE ON EACH LEG OF THE U-BOLT.
- 3.2 ATTACH THE PIPES OR PIPE MOUNTS TO THE BRACKETS PRIOR TO ADDING THE JAW-BOLT/CHAIN ASSEMBLY
- 4.0 TEST
- 5.0 PACKAGING
- 5.1 PACKAGING SHALL MEET ANDREW REQUIREMENTS PER DOCUMENT IS-PL-3005
- 5.2 PRINTED DOCUMENT TO BE PLACED INSIDE POLYBAG AND THEN IN SHIPPING CONTAINER
- 5.3 EXTRA HARDWARE MAY BE SUPPLIED, BAGGED AND SHIPPED

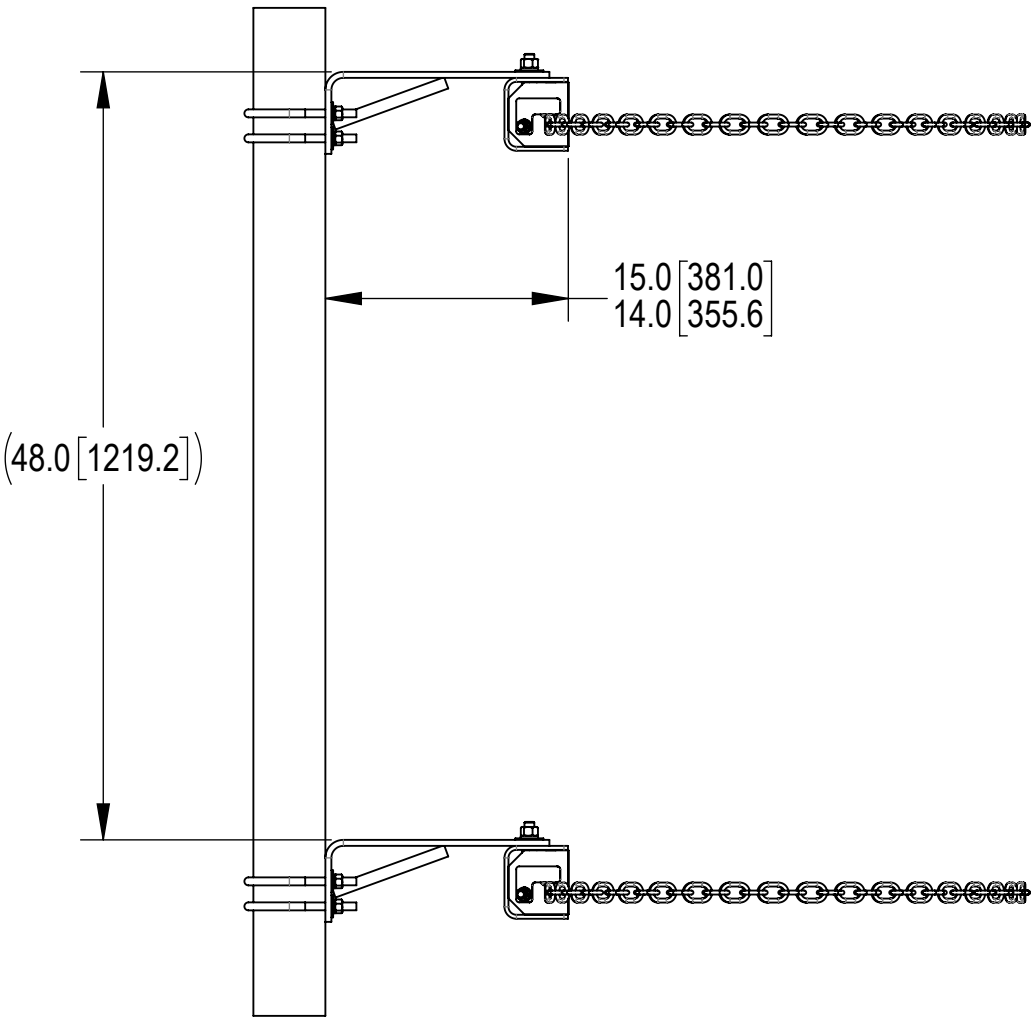
PART NUMBERS, WEIGHTS

TABLE 1: CONFIGURATIONS					
INCLUDED PARTS					
PART NUMBER	WEIGHT (LBS)	CML-L30-B	CML-L60-B	MT-653-63	
CML-L30-63	115.52	1	-	1	
CML-L60-63	127.52	-	1	1	

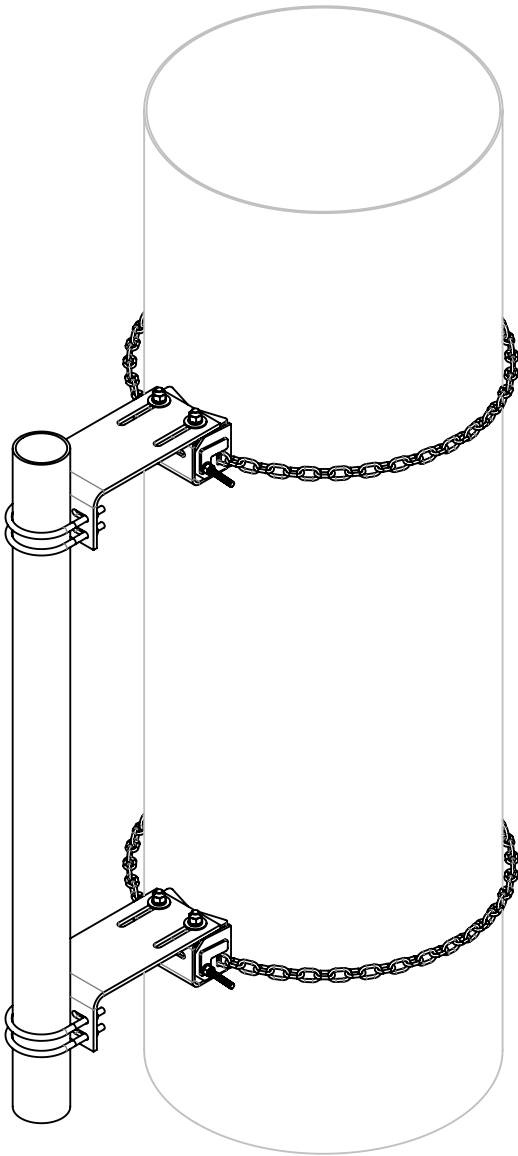
PACKAGING
(CML-L30-63 SHOWN FOR REFERENCE)








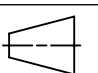
CML-L30-63 SHOWN FOR REFERENCE



REVISIONS			
REV.	DESCRIPTION	DATE	APPROVED
A	INITIAL RELEASE	MSM 12FEB10	
B	ADDED TIE-WRAPS TO BOM	MSM 27AUG10	
C	REDRAWN TO ADD CONFIGURATIONS SHEET, TW5001 REMOVED	YMENG 02JUN23	BA1025 40172806CMO
D	SIMPLIFIED SERIES DRAWING	YC1059 25AUG25	BA1025 50104606AMO



ATTACHED TO MONOPOLE VIEW
(CML-L30-63 SHOWN FOR REFERENCE)

<div>ANDREW[®] an Amphenol company</div>										
TOLERANCES					SAP MATERIAL MASTER					
1 PLACE .X[X] ± 0.12[3.0]		3 PLACE .XXX[X] ± 0.030[0.8]			SEE TABLE					
2 PLACE .XX[X] ± 0.06[1.5]		ANGLES ± 2°								
FINISH				MATERIAL						
UNLESS OTHERWISE SPECIFIED DIMENSIONS ARE IN INCHES INTERPRET PER ANSI Y 14.5M-1994		NAME	DATE	TITLE STAND-OFF CHAIN MOUNT KIT						
	CE	MSM	12FEB10							
	RW	YC1059	08/28/2025							
										
	AD	YMENG	08/28/2025	SCALE		DOCUMENT NO. CML-L SERIES				
	RE	YMENG	08/28/2025	1:12						
	ECN 50104606AMO									
	SIZE		Auth Group	INSL	MODEL			DRAWING		
C			VERSION	STATUS	REVISION	VERSION	STATUS	REVISION		
			00	RE	B	02	RE	D		

Confidential