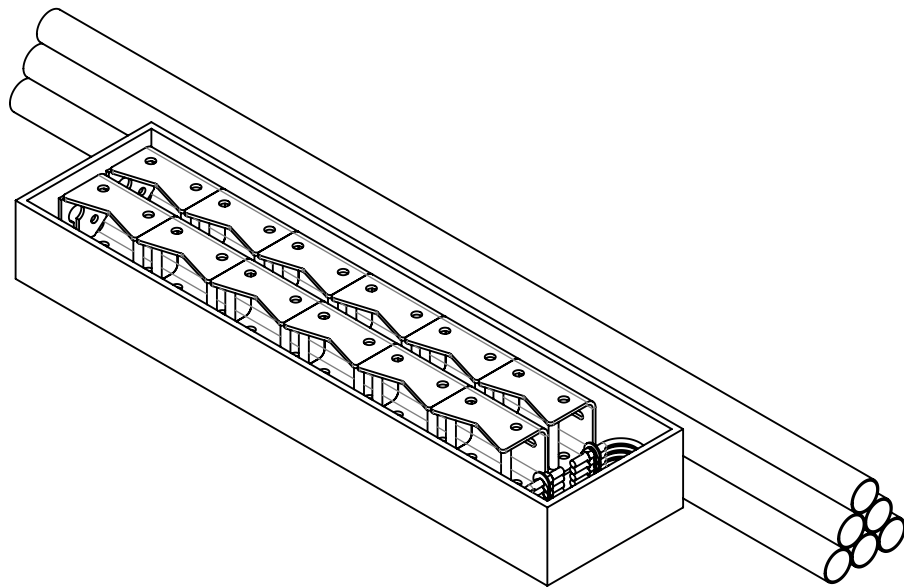


- 4
- 3
- 2
- 1
- 1.0 GENERAL NOTES
- 1.1 ALL METRIC DIMENSIONS ARE IN BRACKETS [X. X]
- 1.2 FOR PATENT INFO: <https://www.adwpat.com>
- 2.0 DESIGN NOTES
- 2.1 ANY HAZARDS OR OBSTRUCTIONS TO THE CLIMBING FACILITY AND SAFETY CLIMB MUST BE IDENTIFIED PRIOR TO INSTALLING THE APPURTENANCE. ADDITIONAL PRODUCTS MAY BE REQUIRED TO MAINTAIN THE INTEGRITY OF THE SAFETY CLIMB. DURING INSTALLATION, TEMPORARY AND/OR PERMANENT PRECAUTIONARY MEASURES SHOULD BE TAKEN TO PRESERVE THE CLIMBING FACILITY AND/OR SAFETY CLIMB.
- 3.0 MANUFACTURING/SPECIAL REQUIREMENTS
- 3.1 TIGHTEN ALL BOLTS SECURING FLAT PLATES BY THE TURN-OF-NUT METHOD. TIGHTEN ALL U-BOLTS USING TURN-OF-NUT METHOD WITH ATTENTION TO LEAVE EQUAL DISTANCE AND EQUAL FORCE ON EACH LEG OF THE U-BOLT.
- 3.2 ATTACH THE PIPES OR PIPE MOUNTS TO THE BRACKETS PRIOR TO ADDING THE JAW-BOLT/CHAIN ASSEMBLY
- 4.0 TEST
- 5.0 PACKAGING
- 5.1 PACKAGING SHALL MEET ANDREW REQUIREMENTS PER DOCUMENT IS-PL-3005
- 5.2 PRINTED DOCUMENT TO BE PLACED INSIDE POLYBAG AND THEN IN SHIPPING CONTAINER
- 5.3 EXTRA HARDWARE MAY BE SUPPLIED, BAGGED AND SHIPPED

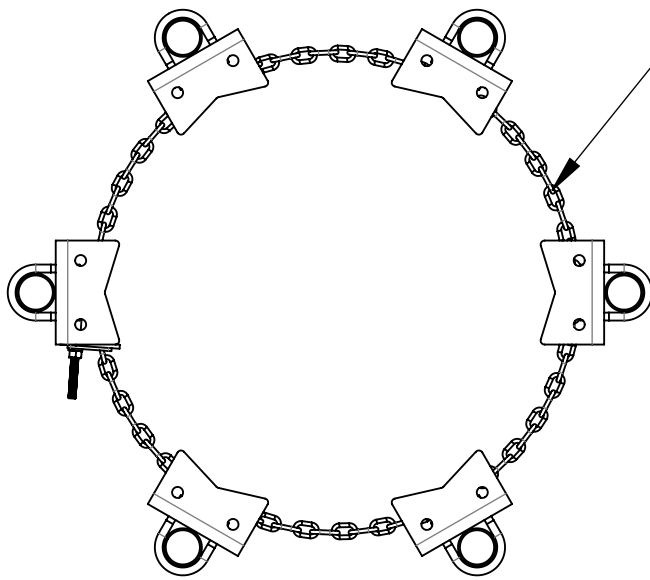


PACKAGING
(CM-606-72 SHOWN FOR REFERENCE)

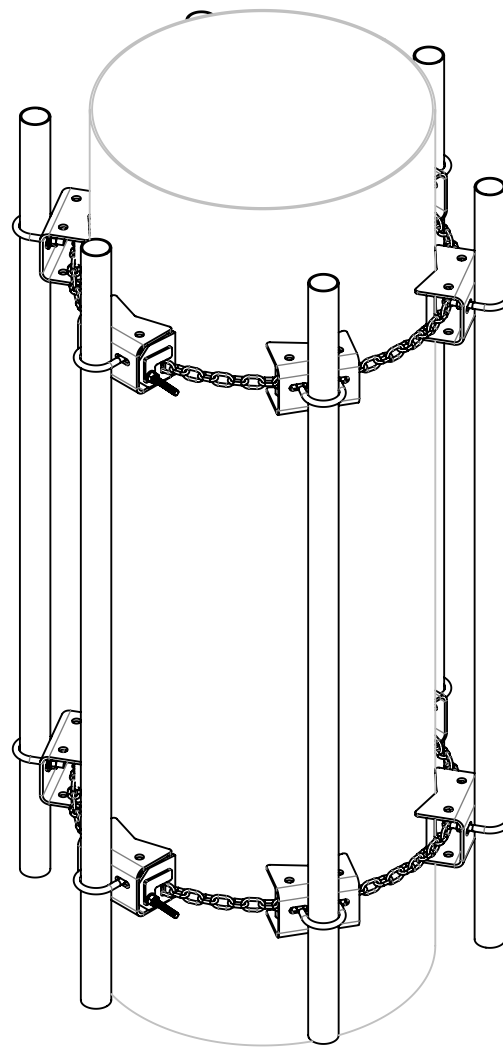
REVISIONS			
REV.	DESCRIPTION	DATE	APPROVED
A	INITIAL RELEASE	ACC 17JAN0406	TP
B	ADDED NEW KITS	ACG 26OCT06	TP
C	UPDATE BOM	OGG 21SEP10	TP
D	UPDATED DRAWING FORMAT	YC1059 21AUG25	BA1025 50104555AMO

PART NUMBERS, WEIGHTS

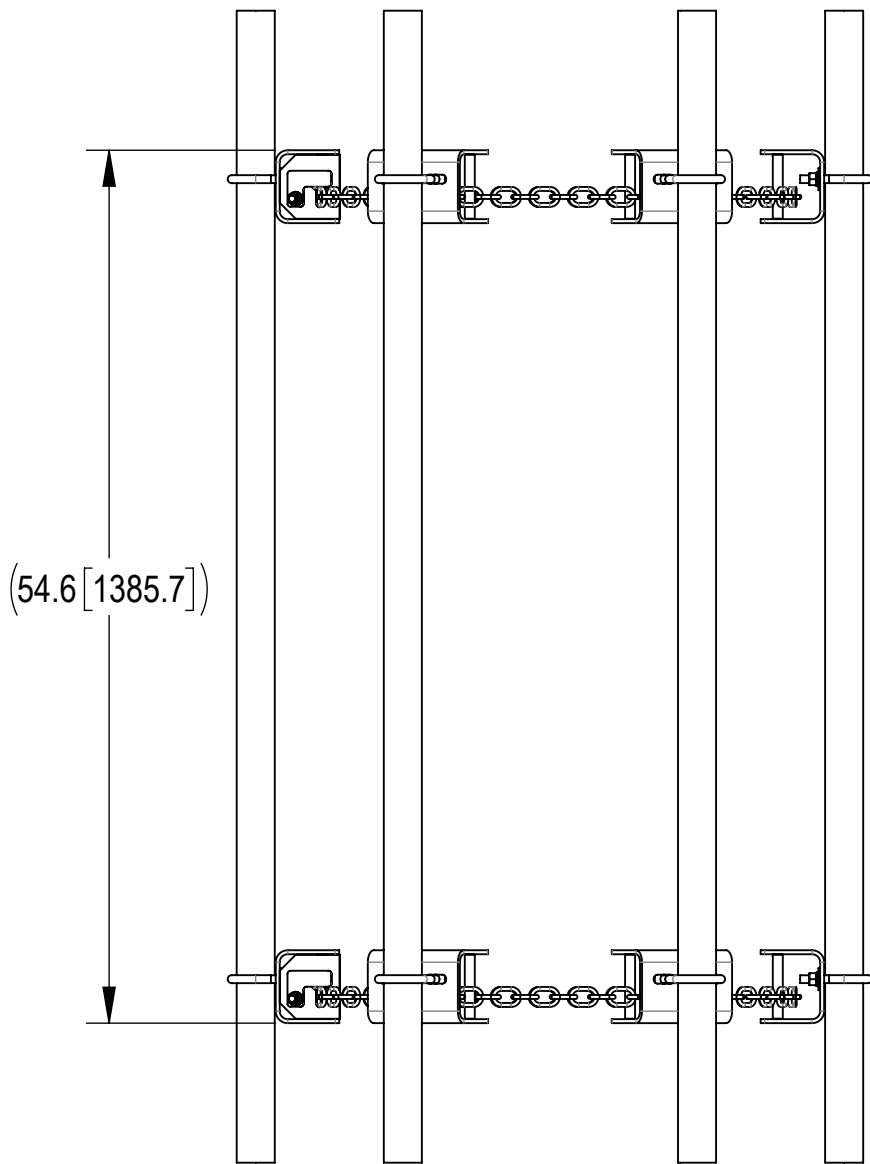
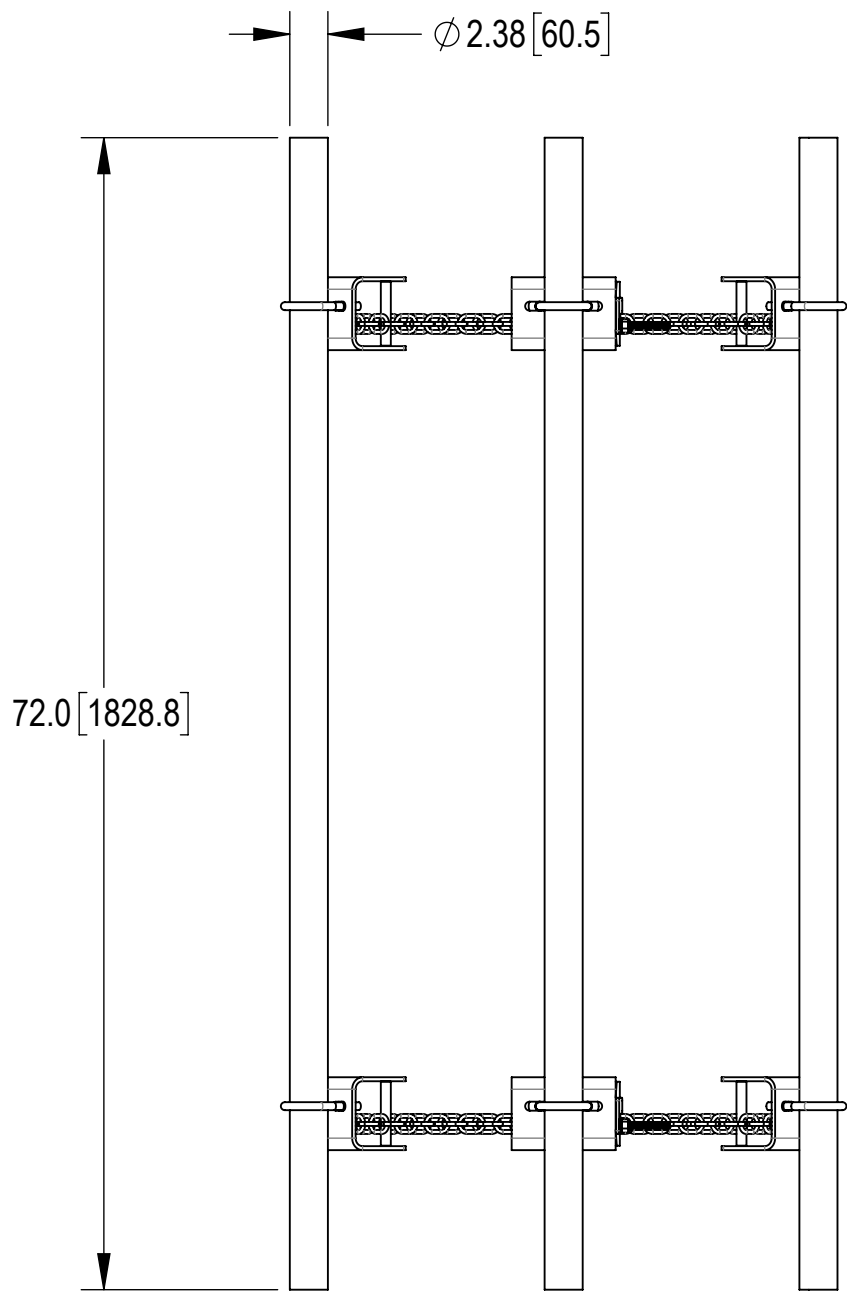
TABLE 1: CONFIGURATIONS					
		INCLUDED PARTS			
PART NUMBER	WEIGHT (LBS)	CM-606-B	MT-650	MT-651	MT-651-96
CM-606-48	169.85	1	6	-	-
CM-606-72	204.74	1	-	6	-
CM-606-96	239.62	1	-	-	6



CM-606 SERIES FIT 14" TO 60" OD MONOPOLE





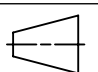
ATTACHED TO MONOPOLE VIEW
(CM-606-72 SHOWN FOR REFERENCE)



CM-606-72 SHOWN FOR REFERENCE

DENSITY	lbs/in³
MASS	lbs
VOLUME	in³
SURFACE AREA	in²
HEIGHT	
LENGTH	
WIDTH	

Confidential

<div>ANDREW® an Amphenol company</div>									
TOLERANCES						SAP MATERIAL MASTER			
1 PLACE .X[X] ± 0.12[3.0]		3 PLACE .XXX[X] ± 0.030[0.8]				SEE TABLE			
2 PLACE .XX[X] ± 0.06[1.5]		ANGLES ± 2°							
FINISH					MATERIAL				
UNLESS OTHERWISE SPECIFIED DIMENSIONS ARE IN INCHES INTERPRET PER ANSI Y 14.5M-1994		NAME	DATE	SIX SECTOR CHAIN MOUNT					
	CE	ACG	01/17/06						
	RW	YC1059	08/21/2025						
	AD	YMENG	08/25/2025	SCALE 1:12	DOCUMENT NO. CM-606 SERIES				
	RE	YMENG	08/25/2025						
	ECN 50104555AMO								
SIZE	Auth Group	INSL	MODEL			DRAWING			SHEET 1 OF 1
C			VERSION	STATUS	REVISION	VERSION	STATUS	REVISION	
			00	RE	D	00	RE	D	

2

1