

# JAHH-45A-R3B



8-port sector antenna, 2x 698–798, 2x 824–894 and 4x 1695–2360 MHz, 45° HPBW, low bands each have a RET and the high bands share a RET. Two internal SBTs.

- Internal SBT on low and high band allow remote RET control from the radio over the RF jumper cable
- One RET for 700MHz, one RET for 850MHz, and one RET for both high bands to ensure same tilt level for 4x Rx or 4x MIMO
- Internal filter on low band and interleaved dipole technology providing for attractive, low wind load mechanical package
- Separate RS-485 RET input/output for low and high band
- Narrow beamwidth capacity antenna for higher level of densification and enhanced data throughput

## General Specifications

Antenna Type	Sector
Band	Multiband
Color	Light Gray (RAL 7035)
Grounding Type	RF connector body grounded to reflector and mounting bracket
Performance Note	Outdoor usage   Wind loading figures are validated by wind tunnel measurements described in white paper WP-112534-EN
Radome Material	Fiberglass, UV resistant
Radiator Material	Aluminum   Low loss circuit board
Reflector Material	Aluminum
RF Connector Interface	4.3-10 Female
RF Connector Location	Bottom
RF Connector Quantity, high band	4
RF Connector Quantity, low band	4
RF Connector Quantity, total	8

## Remote Electrical Tilt (RET) Information

RET Interface	8-pin DIN Female   8-pin DIN Male
RET Interface, quantity	2 female   2 male
Input Voltage	10–30 Vdc
Internal Bias Tee	Port 1   Port 5

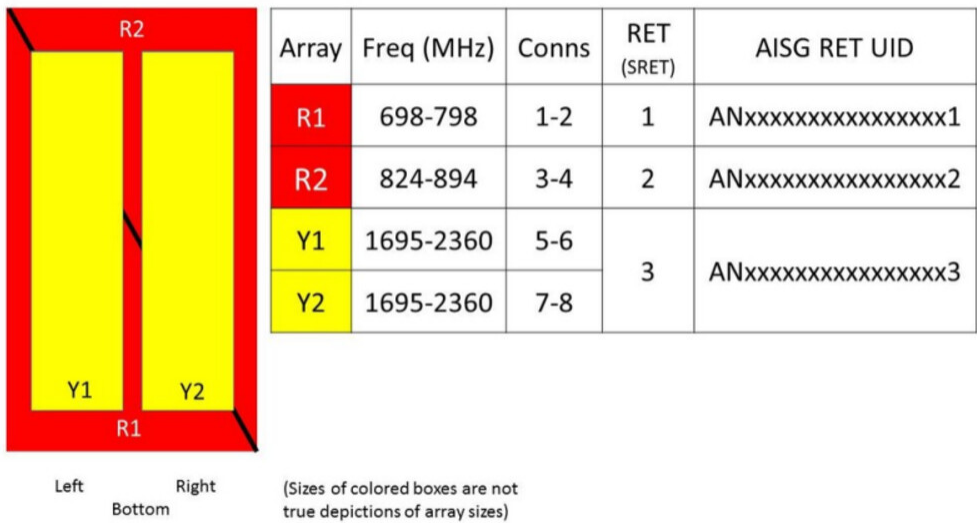
# JAHH-45A-R3B

Internal RET	High band (1)   Low band (2)
Power Consumption, active state, maximum	8 W
Power Consumption, idle state, maximum	1 W
Protocol	3GPP/AISG 2.0 (Single RET)

## Dimensions

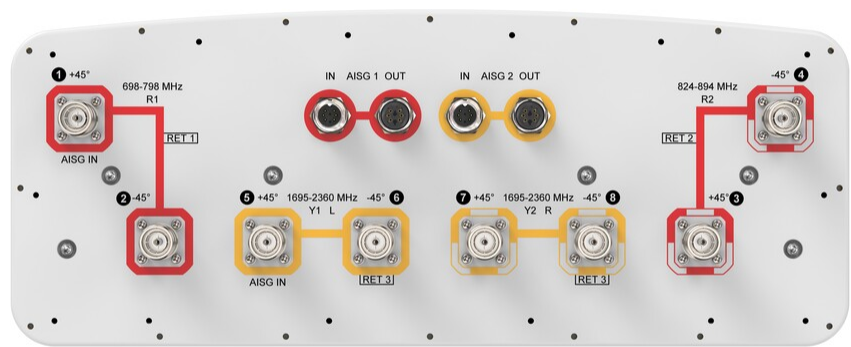
Width	457 mm   17.992 in
Depth	178 mm   7.008 in
Length	1399 mm   55.079 in
Net Weight, antenna only	33.5 kg   73.855 lb

## Array Layout



## Port Configuration

# JAHH-45A-R3B



## Electrical Specifications

Impedance	50 ohm
Operating Frequency Band	1695 – 2360 MHz   698 – 798 MHz   824 – 894 MHz
Polarization	±45°
Total Input Power, maximum	800 W @ 50 °C

## Electrical Specifications

	R1	R2	Y1,Y2	Y1,Y2	Y1,Y2	Y1,Y2
Frequency Band, MHz	698–798	824–894	1695–1880	1850–1990	1920–2200	2300–2360
RF Port	1-2	3-4	5-8	5-8	5-8	5-8
Gain, dBi	14.8	15.6	18.1	18.7	19.1	19.6
Beamwidth, Horizontal, degrees	49	42	44	43	42	39
Beamwidth, Vertical, degrees	18.6	16.6	7.7	7.2	6.7	6
Beam Tilt, degrees	2–18	2–18	1–9	1–9	1–9	1–9
USLS (First Lobe), dB	17	19	18	19	19	20
Front-to-Back Ratio at 180°, dB	33	32	36	37	36	37

# JAHH-45A-R3B

Isolation, Cross Polarization, dB	25	25	25	25	25	25
Isolation, Inter-band, dB	25	25	25	25	25	25
VSWR   Return loss, dB	1.5   14.0	1.5   14.0	1.5   14.0	1.5   14.0	1.5   14.0	1.5   14.0
PIM, 3rd Order, 2 x 20 W, dBc	-153	-153	-153	-153	-153	-153
Input Power per Port, maximum, watts	200	200	300	300	300	250

## Mechanical Specifications

Effective Projective Area (EPA), frontal	0.74 m²   7.965 ft²
Effective Projective Area (EPA), lateral	0.15 m²   1.615 ft²
Wind Loading @ Velocity, frontal	788.0 N @ 150 km/h (177.1 lbf @ 150 km/h)
Wind Loading @ Velocity, lateral	159.0 N @ 150 km/h (35.7 lbf @ 150 km/h)
Wind Loading @ Velocity, maximum	788.0 N @ 150 km/h (177.1 lbf @ 150 km/h)
Wind Loading @ Velocity, rear	692.0 N @ 150 km/h (155.6 lbf @ 150 km/h)
Wind Speed, maximum	241 km/h (150 mph)

## Packaging and Weights

Width, packed	526 mm   20.709 in
Depth, packed	283 mm   11.142 in
Length, packed	1566 mm   61.654 in
Weight, gross	45.9 kg   101.192 lb

## Regulatory Compliance/Certifications

Agency	Classification
UK-ROHS	Compliant

## Included Products

BSAMNT-3	–	Wide Profile Antenna Downtilt Mounting Kit for 2.4 - 4.5 in (60 - 115 mm) OD round members. Kit contains one scissor top bracket set and one bottom bracket set.
----------	---	--

## \* Footnotes

Performance Note	Severe environmental conditions may degrade optimum performance
------------------	---