

KVV-65A-3XKIT



Tri-sector solution that includes 3 KVV-65A-R2-V1 antennas and mounting kit to install them on a pipe

- Suitable for attachment to 3.5-6.6 in or 89-168 mm outer diameter pipe
- Compatible with canister concealment shrouds with inner diameter > 23.5 in (597mm)
- Minimum shroud diameter is the same for all applicable pipe diameters

General Specifications

Band	Multiband
Performance Note	Outdoor usage
RF Connector Interface	4.3-10 Female
RF Connector Location	Bottom
RF Connector Quantity, mid band	12
RF Connector Quantity, low band	6
RF Connector Quantity, total	18

Electrical Specifications

Operating Frequency Band	1695 – 2690 MHz 617 – 960 MHz
---------------------------------	---------------------------------

Packaging and Weights

Width, packed	601 mm 23.661 in
Depth, packed	1027 mm 40.433 in
Length, packed	1667 mm 65.63 in
Weight, gross	128.8 kg 283.955 lb

Regulatory Compliance/Certifications

Agency	Classification
CHINA-ROHS	Below maximum concentration value
REACH-SVHC	Compliant as per SVHC revision on www.andrew.com/ProductCompliance
ROHS	Compliant
UK-ROHS	Compliant



KVV-65A-3XKIT

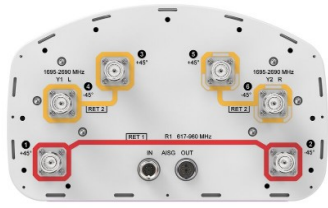
Included Products

KVV-65A-R2-V1 – 6-port sector antenna, 2x 617-960, 4x 1695-2690 MHz and 65° HPBW, 2XRET

* Footnotes

Performance Note Severe environmental conditions may degrade optimum performance

KVV-65A-R2-V1



6-port sector antenna, 2x 617-960, 4x 1695-2690 MHz and 65° HPBW, 2XRET

- Small size ideal for deploying low band and mid band in concealments and flagpole

General Specifications

Antenna Type	Sector
Band	Multiband
Grounding Type	RF connector inner conductor and body grounded to reflector and mounting bracket
Performance Note	Outdoor usage
RF Connector Interface	4.3-10 Female
RF Connector Location	Bottom
RF Connector Quantity, mid band	4
RF Connector Quantity, low band	2
RF Connector Quantity, total	6

Remote Electrical Tilt (RET) Information

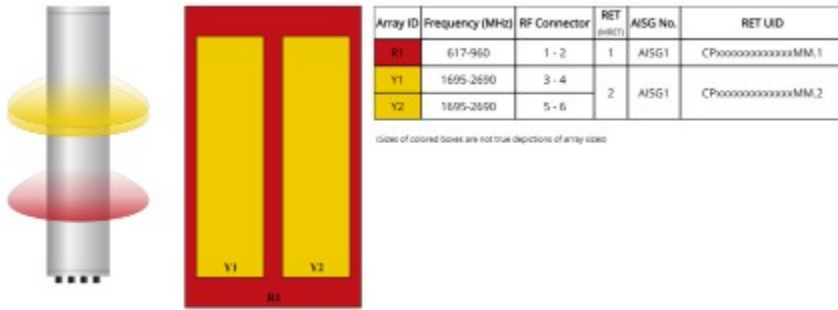
RET Hardware	CommRET v2
RET Interface	8-pin DIN Female 8-pin DIN Male
RET Interface, quantity	1 female 1 male
Input Voltage	10–30 Vdc
Internal RET	Low band (1) Mid band (1)
Power Consumption, active state, maximum	10 W
Power Consumption, idle state, maximum	2 W
Protocol	3GPP/AISG 2.0

Dimensions

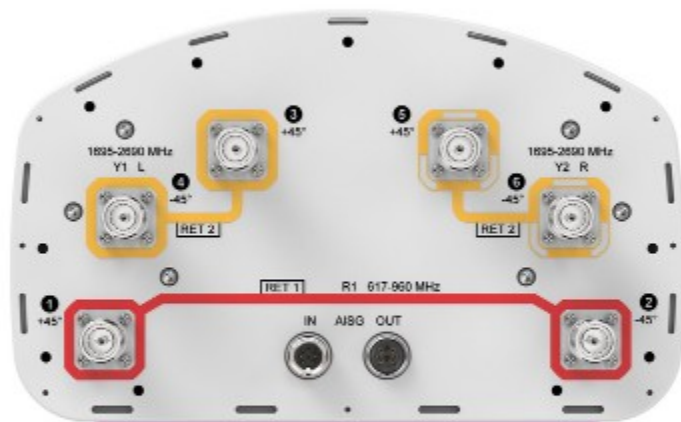
Width	301 mm 11.85 in
Depth	181 mm 7.126 in
Length	1219 mm 47.992 in
Net Weight, antenna only	15.1 kg 33.29 lb

KVV-65A-R2-V1

Array Layout



Port Configuration



Electrical Specifications

Impedance	50 ohm
Operating Frequency Band	1695 – 2690 MHz 617 – 960 MHz
Polarization	±45°
Total Input Power, maximum	1,000 W @ 50 °C

KVV-65A-R2-V1

Electrical Specifications

	R1	R1	R1	R1	Y1,Y2	Y1,Y2	Y1,Y2	Y1,Y2	Y1,Y2
Frequency Band, MHz	617–698	698–806	806–894	894–960	1695–1880	1850–1990	1920–2200	2300–2500	2500–2690
RF Port	1,2	1,2	1,2	1,2	3,4,5,6	3,4,5,6	3,4,5,6	3,4,5,6	3,4,5,6
Gain, dBi	13.1	13.3	13.4	13.5	16.7	17	17.5	18	18.4
Beamwidth, Horizontal, degrees	76	76	72	71	64	62	57	60	55
Beamwidth, Vertical, degrees	21.2	19.2	16.9	15.2	7.6	7.2	6.8	6.1	5.8
Beam Tilt, degrees	4–18	4–18	4–18	4–18	2–12	2–12	2–12	2–12	2–12
USLS (First Lobe), dB	18	19	16	15	15	16	17	18	18
Front-to-Back Ratio at 180°, dB	28	29	27	26	33	35	33	32	34
Front-to-Back Total Power at 180° ± 30°, dB	19	21	22	20	25	27	27	28	28
CPR at Boresight, dB	18	20	22	23	21	23	21	19	20
Isolation, Cross Polarization, dB	25	25	25	25	25	25	25	25	25
Isolation, Inter-band, dB	25	25	25	25	25	25	25	25	25
VSWR Return loss, dB	1.5 14.0	1.5 14.0	1.5 14.0	1.5 14.0	1.5 14.0	1.5 14.0	1.5 14.0	1.5 14.0	1.5 14.0
PIM, 3rd Order, 2 x 20 W, dBc	-150	-150	-150	-150	-150	-150	-150	-150	-150
Input Power per Port at 50°C, maximum, watts	250	250	250	250	200	200	200	200	200

Mechanical Specifications

Wind Loading @ Velocity, frontal	173.0 N @ 150 km/h (38.9 lbf @ 150 km/h)
Wind Loading @ Velocity, lateral	142.0 N @ 150 km/h (31.9 lbf @ 150 km/h)
Wind Loading @ Velocity, maximum	334.0 N @ 150 km/h (75.1 lbf @ 150 km/h)
Wind Loading @ Velocity, rear	176.0 N @ 150 km/h (39.6 lbf @ 150 km/h)
Wind Speed, maximum	241 km/h (150 mph)

Packaging and Weights

Width, packed	565 mm 22.244 in
Depth, packed	342 mm 13.465 in
Length, packed	1362 mm 53.622 in
Weight, gross	20.6 kg 45.415 lb

KVV-65A-R2-V1

Regulatory Compliance/Certifications

Agency	Classification
UK-ROHS	Compliant

* Footnotes

Performance Note	Severe environmental conditions may degrade optimum performance
-------------------------	---