



# Installation Instruction for CMAX-DMF-43-UW-I53



## CMAX-DMF-43-UW-I53

Document Number: **M0149AS**

Document Revision: **02**

---

Date: **March 2026**

Copyright © 2026 ANDREW<sup>®</sup>, an Amphenol company. All Rights Reserved.

This document has been developed by ANDREW, an Amphenol company, and is intended for the use of its customers and customer support personnel. The specifications and information regarding the products in this manual are subject to change without notice. All statements, information, and recommendations in this manual are believed to be accurate but are presented without warranty of any kind, express or implied. Users must take full responsibility for their application of any products.

The software license and limited warranty for the accompanying product are set forth in the information packet that shipped with the product and are incorporated herein by reference. If you are unable to locate the software license or limited warranty, contact your ANDREW sales representative for a copy.

Andrew Wireless Systems GmbH, 25-March-2026

## TABLE OF CONTENTS

<b>1. INSTALLATION</b>	<b>4</b>
1.1. INSTALLATION PREPARATIONS	4
1.2. ASSEMBLY	4
1.3. WALL MOUNTING	5
1.4. POLE MOUNTING (28~60 MM POLE DIAMETER)	6
1.5. ANTENNA INSTALLATION	7
1.5.1. Antenna Mounting	7
1.5.2. Azimuth Angle	7
1.5.3. Elevation Angle	8
<b>2. CONTACTING ANDREW</b>	<b>9</b>
2.1. TECHNICAL SUPPORT	9
2.2. WASTE ELECTRICAL AND ELECTRONIC EQUIPMENT RECYCLING	9
2.3. TECHNICAL TRAINING	10
2.4. ACCESSING USER DOCUMENTATION	10

## LIST OF CHANGES

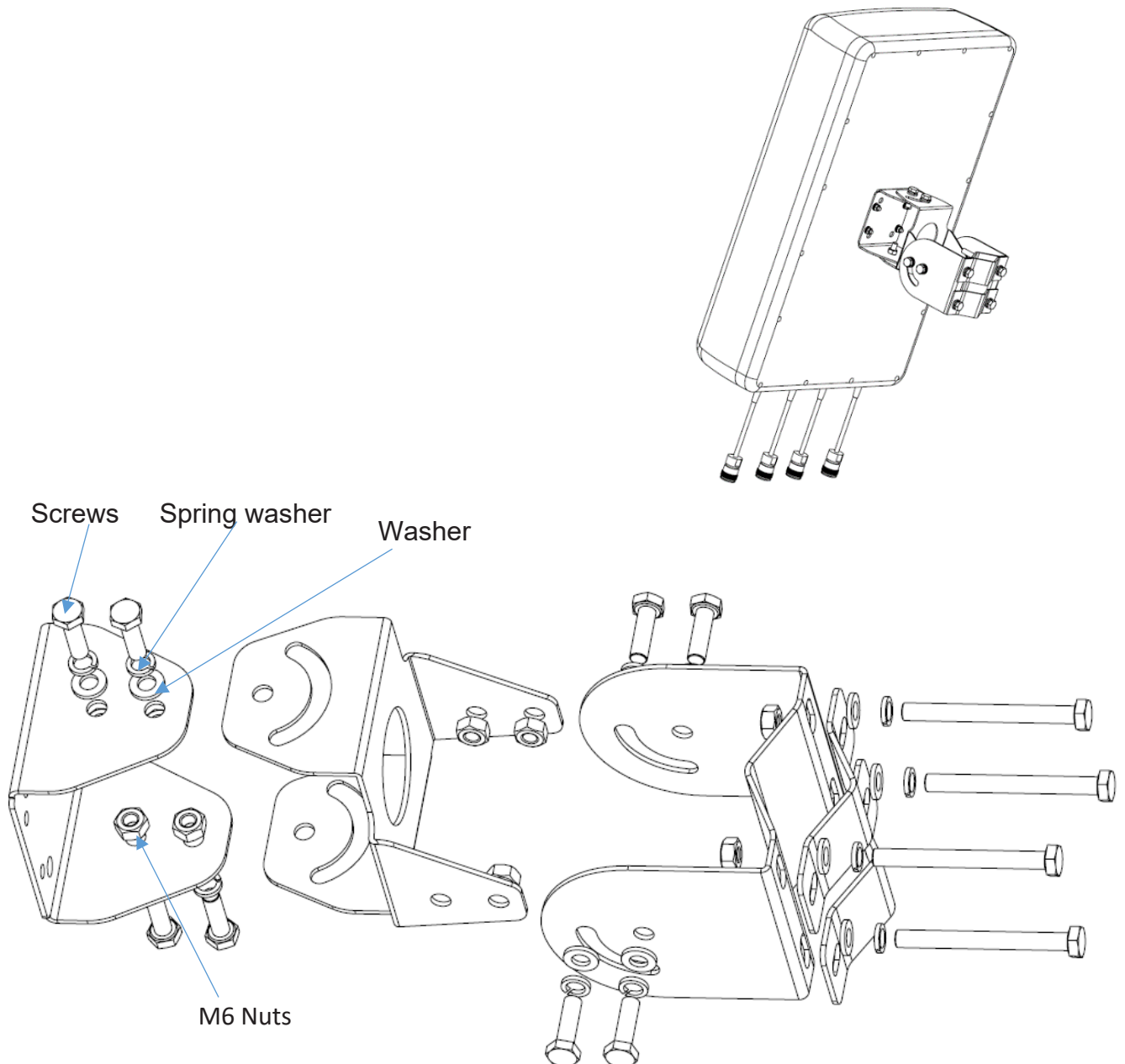
<b>Version</b>	<b>Changes</b>	<b>Release Date</b>
M0149ASB		04-May-2020
M0149ASC	<ul style="list-style-type: none"> <li>- Branding and contact information updated</li> <li>- Installation preparations added</li> <li>- Bending radius information enhanced</li> </ul>	25-March-2026

## 1. Installation

### 1.1. Installation Preparations

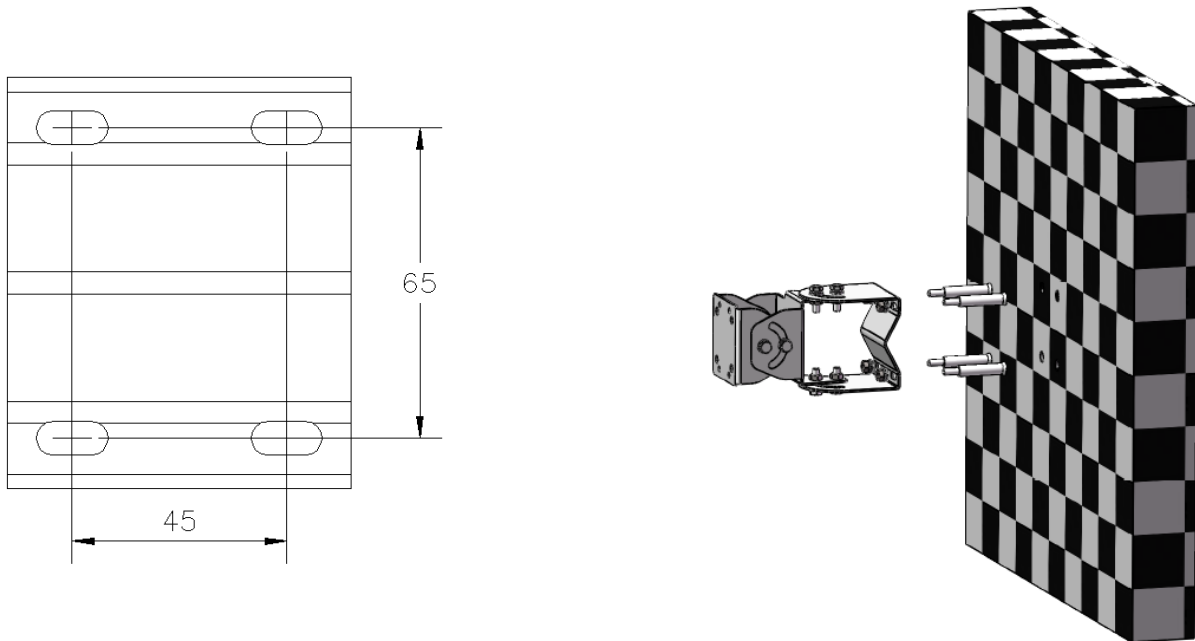
- Please read the complete description before starting the installation.
- Observe that the bending radius of the cables must not be less than 40 mm.
- Make sure that connectors are properly sealed against water if no cables are connected to them after the installation.

### 1.2. Assembly



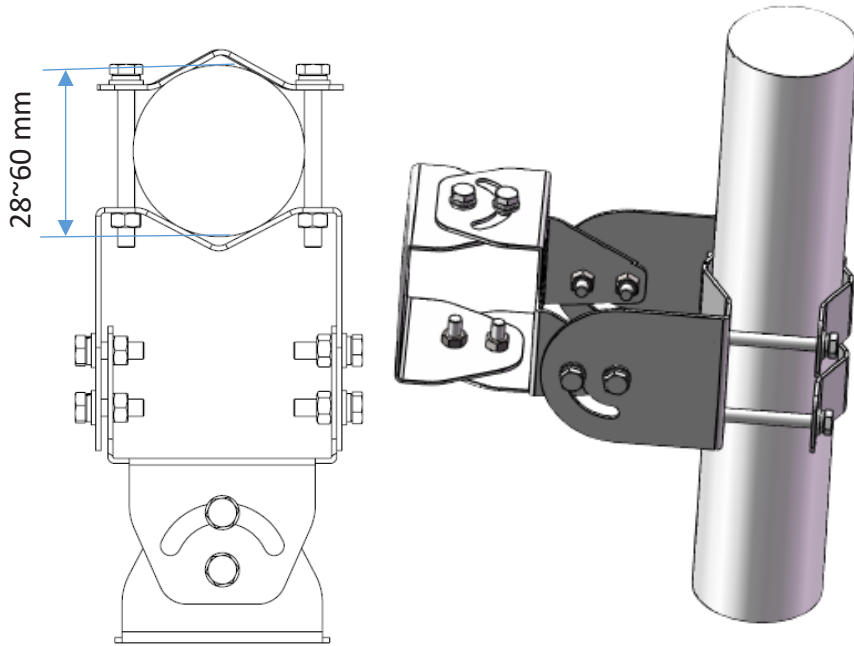
Fit these seven parts above together and fasten them with screws M6, nuts M6, spring washers, and washers.

### 1.3. Wall Mounting



1. Use this pedestal piece as a drill jig to mark 4 holes onto the wall as shown in the drawing above.
2. Drill 4 holes into the wall and insert 4 expansion bolts into holes.
3. Install the mounting kits to the expansion bolts and tighten the M6 nuts and flat washers.
4. Attach the antenna to the mounting kits and then tighten the M4 nuts, spring washers and flat washers.

### 1.4. Pole Mounting (28~60 mm pole diameter)

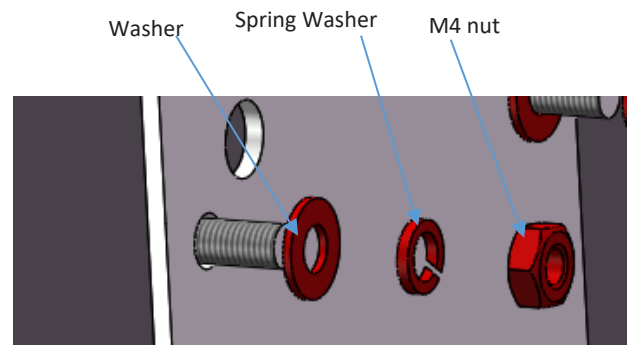
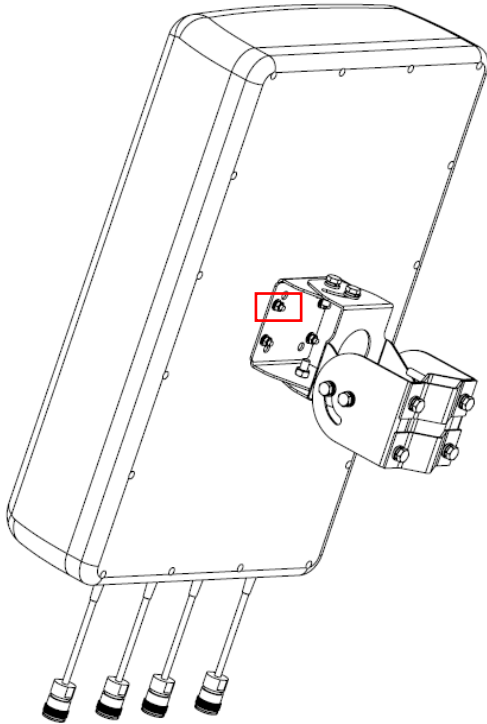


## 1.5. Antenna Installation

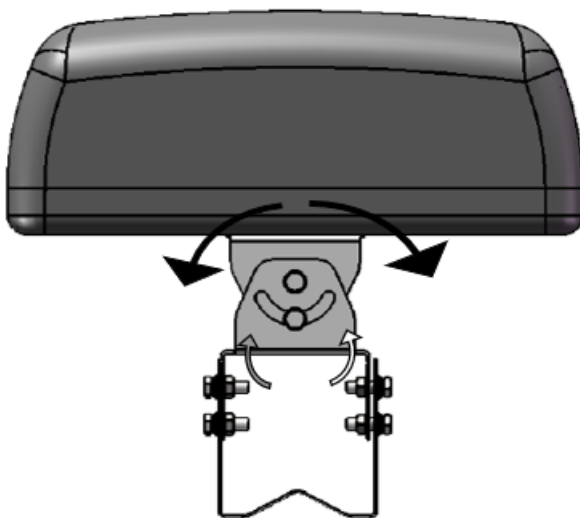
Note:




The bending radius of the cables must not be less than 40 mm.

### 1.5.1. Antenna Mounting

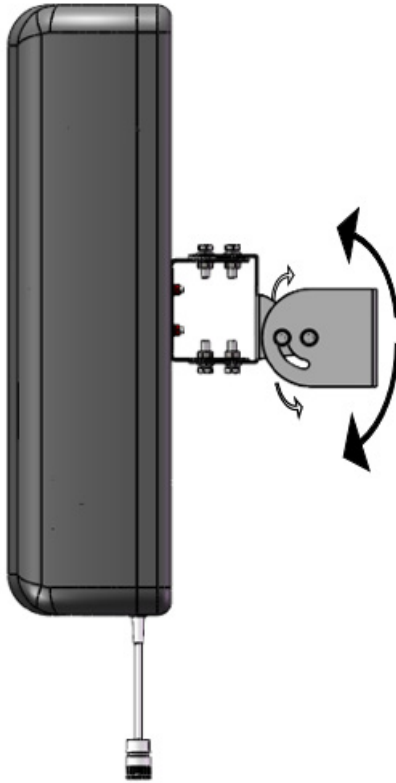


### 1.5.2. Azimuth Angle



1. Loosen the fixing screw. (Do NOT unscrew it completely.) 
2. Adjust your desired angle. The complete antenna pedestal can be swiveled to the left- / right-hand side by up to 60°. 
3. Tighten the fixing screw. 

### 1.5.3. Elevation Angle



1. Loosen the fixing screw. (Do NOT unscrew it completely.)



2. Adjust your desired angle. The complete antenna pedestal can be swiveled to the top / bottom by up to 40°.



3. Fasten the fixing screw.



## 2. Contacting ANDREW

The following sections tell you how to contact ANDREW® for additional information or for assistance.

### 2.1. Technical Support

This section tells you how to contact the ANDREW Technical Support team. Support is available 7 days a week, 24 hours a day.

#### Telephone Helplines

Use the following Helpline telephone numbers to get live support, 24 hours a day.

**24X7** +1 888-297-6433 (Toll free for U.S. and Canada)  
**EMEA 8:00-17:00 (UTC +1)** + 800 73732837 (Toll free for parts of EMEA and Australia)  
+ 49 909969333 (Toll charge incurred)

Calls to an EMEA Helpline outside of the 8:00 to 17:00 time frame will be forwarded to the 24x7 Helpline.

#### Online Support

Click the link below or scan the QR code to the right to submit tickets using the online [Technical Support Form](#).



### 2.2. Waste Electrical and Electronic Equipment Recycling

In alignment with our commitment to the Waste Electrical and Electronic Equipment (WEEE) Directive, we design and manufacture our products with sustainability as a priority. We are dedicated to supporting responsible end-of-life disposal and recycling practices, which help reduce environmental impact and promote a circular economy.

To learn more, scan the QR code to the right or click the link below:

<https://www.andrew.com/sustainability/environment/weee/>



## 2.3. Technical Training

1. To access training on the online technical training site, please click <https://www.andrew.com/support/training/> or scan the QR code to the right:
2. From here you can see course catalogs, training calendars, and visit the training portal that lets you register for online and instructor-led courses and take online courses.
3. Instructor-led courses are conducted in North America and Europe. Before choosing a course, please verify the region.
4. For training related questions, please contact us:  
[icn\\_training@andrew.com](mailto:icn_training@andrew.com)



## 2.4. Accessing User Documentation

1. Access to the Customer Portal requires a user account. If you don't have an account:
  - Visit My ANDREW at <https://www.andrew.com/membership> or by scanning the QR code to the right.
  - Click “New user registration” and follow the prompts.
  - After you have registered in My ANDREW, click the **Request access** button for the **Customer Portals**.
  - After having done the request, it might take several days to get approved. Then, you can select the **Indoor Wireless Resource Center for ANDREW** from the list of applications.
2. To go directly to the portal, where you can access the DAS-user documentation, scan the QR Code to the right.  
Alternatively, visit My ANDREW (see above) and use the **Indoor Wireless Resource Center for ANDREW** application.
3. In Tools and Documentation, search by product, document category, or title.
4. Click on the title of any document to open it.

