

# **RAPID POLE DEPLOYMENT SOLUTIONS**

Raise your infrastructure quickly,  
easily and virtually anywhere

## REMOTE LOCATIONS. HARSH ENVIRONMENTS. STRICT REQUIREMENTS. TIGHT SCHEDULES.

When your industry takes you off-road, off the grid or completely off the map, the only physical infrastructure you have is what you can build on site to support communications, data transfer, lighting, monitoring, power generation and more.

In remote locations, the cost, durability and deployment speed of the physical structure supporting your network infrastructure is of paramount importance. While cost always matters, schedules are often less flexible than budgets, so, even when you're off the beaten path, you're always on the clock.

Your solution needs the strength of steel to carry the load, meet performance expectations, and stare down the harshest climate conditions. It must offer a measure of adaptive flexibility that enables you to deploy in a variety of ways to conform to local geological and regulatory restrictions—and there are no shortages of either.

Conventional methods of erecting structural steel poles can take days, weeks or even months. A reliance on reinforced concrete foundations can make it difficult to install in remote locations or where local laws or unusual geological conditions may appear to prevent any possible construction.

## DON'T SETTLE FOR ANY STRUCTURAL STEEL. STAY FAST AND FLEXIBLE WITH ANDREW SOLUTIONS.

Built of hot-dip galvanized steel to make them lighter and stronger than wood or comparable steel lattice designs, ANDREW solutions address your need for budget friendly speed, reliability, capacity and flexibility.

They provide a reliable platform for your infrastructure no matter where you need it. This includes locations where you can't use a crane—and even areas offering as little as two square feet of available space.

ANDREW solutions are antenna agnostic and feature generous effective projected area (EPA) loading guidelines. And, because they're from ANDREW, they also offer you access to our complete line of antennas, mounts and other hardware for total compatibility and superior performance.

## SOLUTIONS THAT ARE SPEEDY, BUDGET FRIENDLY, RELIABLE AND FLEXIBLE.



### Structural steel poles support your entire infrastructure

- Remote data communications
- Wireless/Wi-Fi concealment
- Substations
- Power distribution
- Lighting
- Video surveillance
- Wind and solar power

## SOLUTIONS ADVANTAGES

- Speed: Installs in as little as one hour
- Heights: Standard from 20' to 80'
- Composition: Hot-dip galvanized steel
- Options: Light-, medium- and heavy-duty
- Bracing: No wires needed
- Space: Installs in as little as 2 square feet
- Types: Embedded, ballasted or helical
- Compatibility: Antenna agnostic
- Support: Complete line of ANDREW mounts and antennas

## FLEXIBILITY IN DESIGN ALLOWS FLEXIBILITY IN DEPLOYMENT

When there's no telling what kind of terrain or zoning laws you'll be facing, the ANDREW pole solutions have you covered in three distinct ways for maximum flexibility:

- Embedded poles are anchored in excavated holes backfilled with three-quarter-inch aggregate instead of poured concrete making it faster and less expensive to deploy than concrete.
- Ballasted poles require no drilling at all since they are anchored to a weighted platform that sits on level ground. Unlike other ballasted options that call for hard-to-procure and expensive-to-ship concrete blocks, ANDREW's ballasted solution utilizes three-quarter-inch aggregate, which can be locally sourced and more easily transported.
- Helical-base poles bolt directly to a screw-in helical auger. Each auger is drilled directly into the soil until the required pressure threshold is reached—taking as little as an hour to deploy.
- Hinge poles enable you to remotely operate any of the three techniques above with only one technician—eliminating installation or maintenance climbing for maximum safety.

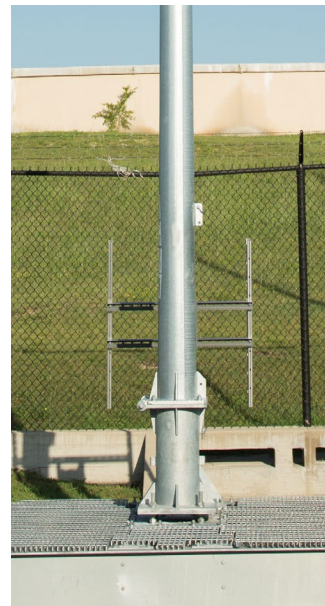
Since no concrete is poured, each of these designs may be as permanent or temporary as you need—allowing for simple, cost-effective removal and even relocation.



Hinged Poles



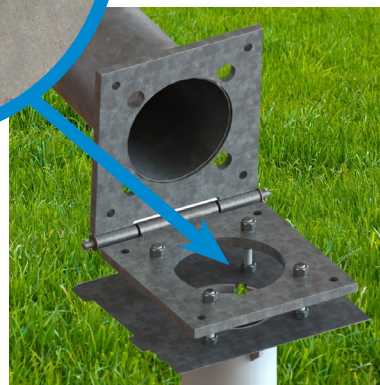
Embedded poles



Ballasted poles



Helical foundation



ANDREW pole solutions work seamlessly with related ANDREW solutions and products, including antennas, mounts, cabinets, cabling and much more. Combined with their generous EPA loading guidelines, these antenna-agnostic solutions give you the freedom to install the infrastructure you need,

### Tailored to three markets for maximum efficiency

While the applications for ANDREW pole solutions are virtually unlimited, several foundational industries—the engines that drive the modern marketplace—can enjoy immediate benefits from the innovation and expertise ANDREW builds into every unit.

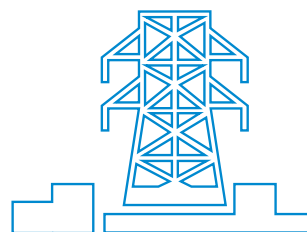
#### Oil, gas and energy

- Depend on structural steel poles for data, phone and internet communications, coupled with power distribution, lighting and video capabilities.
- Exploration and expansion keep you on the move. Since these solutions can be installed in just hours, they can be easily and quickly incorporated into even the most demanding timelines or locations.
- Because they often rely on unlicensed communications bands, ANDREW rapid pole solutions offer antenna-agnostic support for any frequency supporting any kind of operational data.



#### Public utilities

- When security is vital, you can count on ANDREW pole solutions to deliver the lighting and video surveillance capabilities you need, wherever you need them.
- ANDREW rapid pole solutions offer the strength to support power distribution infrastructure in all kinds of terrain, including custom cabinets and utility boxes.
- As the cost of building new sites and substations increases, the flexible deployment options of ANDREW pole solutions can help you grow as needed—minus the hidden costs or unforeseen delays.



#### Rail transportation

- As aging wooden power, communications or signal poles require replacement, ANDREW pole solutions allow for quick installation with minimal downtime.
- Since ANDREW pole solutions are rated to last more than 10 times as long as wooden poles in similar applications—with fewer maintenance problems over the product lifetime—total cost of ownership declines significantly.
- Safety-minded companies can maximize safety with ANDREW pole solutions' no-climb hinged design or removable step-pegs



ERR EMBEDDED RAIL ROAD/TRANSPORTATION  
MEDIUM DUTY AND HEAVY DUTY

**Design:** Multi sided tapered monopole  
**Foundation:** Embedded  
**Finish:** Hot dip galvanized with mastic base  
**Features:** Rivnut mounting, quick deploy  
**Includes:** Monopole, ground tab, lightning rod, mounting location, hand holes,  
**Optional:** Removable step pegs, cabinet mounts, and antenna mounts



PART NUMBER	DESCRIPTION
ST-ERR40	40' AGL pole, medium duty
ST-ERR60	60' AGL pole, medium duty
ST-EMS60	60' AGL pole, heavy duty
ST-EMS70	70' AGL pole, heavy duty
ST-EMS80	80' AGL pole, heavy duty

*\*NOTE: Step clips support removable step pegs*

DBH DOUBLE HINGE POLE, HEAVY DUTY

**Design:** Round tapered conical monopole  
**Foundation:** Helical or standard pier/poured concrete  
**Features:** Double hinged, no climbing, single person service, hoist operated counterbalanced hinged design, rivnut mounting, secure locking  
**Finish:** Hot dip galvanized  
**Includes:** Monopole, ground tab, lightning rod and hand holes  
**Optional:** Cabinet mounts, antenna mounts and hoist



PART NUMBER	DESCRIPTION
ST-DBH40	40' AGL pole
ST-DBH60	60' AGL pole



# BSP BALLAST POLE, MEDIUM DUTY

**Design:** Round tapered conical monopole

**Base Size:** 8' x 8' foot print

**Foundation:** Non-penetrating above ground design with aggregate fill

**Features:** Bolt together ballast tray, removable step pegs, no digging, collar mounting

**Finish:** Hot dip galvanized

**Includes:** Ballast tray, monopole, ground tab, lightning rod, hand holes,

**Optional:** Step pegs, cabinet mounts, and antenna mounts

PART NUMBER	DESCRIPTION
ST-BSP30	30' AGL pole
ST-BSP40	40' AGL pole
ST-BSP50	50' AGL pole
ST-BSP60	60' AGL pole

*\*NOTE: Step clips support removable step pegs*



ANDREW also offers a full line of Metro Cell Universal Mounting Poles in addition to our Rapid Deployment Solutions. Available in both 8 5/8" and 10 3/4" OD, our Universal Mounting Poles are offered in multiple heights ranging from 22 feet to 40 feet to fit virtually any equipment AGL requirement. This pole series is also offered with a standard hot-dipped galvanized finish or can be purchased with a powder-coat finish in a number of colors to match local aesthetic requirements.

## METRO CELL UNIVERSAL MOUNTING POLES

### Standard straight 8 5/8 in. diameter mounting poles

MATERIAL ID	POLE HEIGHT	LUMINAIRE ARM CAPABLE
<a href="#">860641110-x22</a>	22 ft	No
<a href="#">860641110-x25</a>	25 ft	No
<a href="#">860641110-x27</a>	27 ft	Yes
<a href="#">860641110-x28</a>	28 ft	Yes
<a href="#">860641110-x30</a>	30 ft	Yes
<a href="#">860641110-x32</a>	32 ft	Yes
<a href="#">860641110-x37</a>	37 ft	Yes
<a href="#">860641110-x40</a>	40 ft	Yes

### Standard straight 10 3/4 in. diameter mounting poles

MATERIAL ID	POLE HEIGHT	LUMINAIRE ARM CAPABLE
<a href="#">860649813-x22</a>	22 ft	No
<a href="#">860649813-x25</a>	25 ft	No
<a href="#">860649813-x27</a>	27 ft	Yes
<a href="#">860649813-x28</a>	28 ft	Yes
<a href="#">860649813-x30</a>	30 ft	Yes
<a href="#">860649813-x32</a>	32 ft	Yes
<a href="#">860649813-x37</a>	37 ft	Yes
<a href="#">860649813-x40</a>	40 ft	Yes

xx denotes color = 0 - Galvanized, 1 - Light grey, 2 - Green, 3 - Black, 4 - Brown, 9 - Metallic silver, 16 - White, C - Faux concrete, G - Black green, Z - Antique bronze; additional custom colors available, ask your ANDREW rep for details.

Note: To get to desired antenna rad center, antenna height and ANDREW pole top concealment or antenna mount should be added to the pole height. Some pole heights may not be applicable for certain regions/ configurations.

Universal Metro Cell mounting poles include the following:

- Conduit ports for meter, load center, and/or disconnect at base of pole
- Cable routing port holes for mid-pole or top-of-pole radio concealment enclosure mounting
- Universal attachment plate for ANDREW pole top concealment or antenna mount
- Luminaire arm attachments on three sides with cover plates when no arms are present
- Port hole for future smart city device and/or 5G antenna mounting

Universal Mounting Poles can also support a variety of installation methods including:

- Standard pier/poured concrete foundation
- Embedded pole foundation
- Pre-cast foundation
- Helical foundation
- Breakaway foundation (weight dependent)



## A SOLUTION BUILT FOR YOU. A SOLUTION BUILT FOR NOW.

Flexible, dependable, fast and consistent, the ANDREW pole solutions can help your network grow wherever it needs to, as fast as it needs to. When you need a rapid response to a pressing challenge, turn to ANDREW for the expertise and experience you trust to raise and support your infrastructure quickly, easily and virtually anywhere.

Since 1937, ANDREW, an Amphenol company, has driven the evolution of wireless technology. Trusted by mobile network operators and enterprises globally, we work closely with our customers to deliver innovative solutions that enhance connectivity experiences both outdoors and indoors. Our dedicated global team is committed to advancing the industry, fueled by the vision that a better-connected future is possible.



---

**[ANDREW.COM](https://www.andrew.com)**

Visit our website or contact your local ANDREW representative for more information.

©2025 ANDREW, an Amphenol company. All rights reserved. Amphenol and ANDREW are registered trademarks of Amphenol and/or its affiliates in the U.S. and other countries. All product names, trademarks and registered trademarks are property of their respective owners. CO-200429-EN (09/25)