

2-port Venue Antenna, 3300-4000 MHz, 54° HPBW, Fixed Tilt

- Designed with CleanBeam™ technology
- Sharp Roll-Off, 2T2R MetaLens™ antenna
- Supports 2x2 MIMO
- 54° Azimuth and 54° Elevation Beamwidth

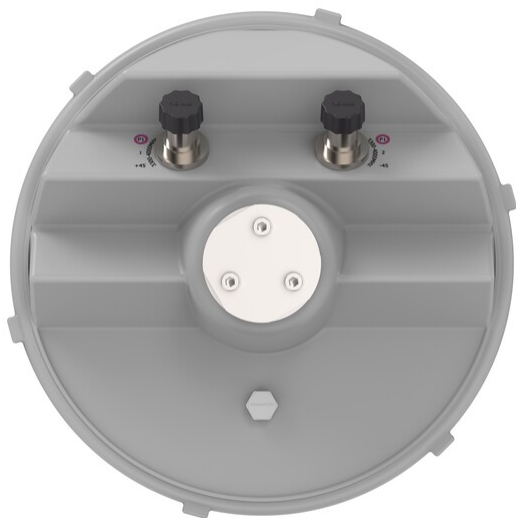
General Specifications

Color	White
Grounding Type	RF connector inner conductor and body grounded to reflector and mounting bracket
Radome Material	FRP, UV resistant
RF Connector Interface	4.3-10 Female
RF Connector Quantity, total	2

Dimensions

Width	299 mm 11.772 in
Depth	226 mm 8.898 in
Length	299 mm 11.772 in
Net Weight, without mounting kit	2.7 kg 5.952 lb

Port Configuration



Electrical Specifications

Operating Frequency Band	3300 – 4000 MHz
Polarization	±45°

Electrical Specifications

Frequency Band, MHz	3300–3800	3550–3700	3700–4000
RF Port	1,2	1,2	1,2
Gain, dBi	11.8	11.1	12.6
Beamwidth, Horizontal, degrees	53	54	40
Beamwidth, Vertical, degrees	52	54	41
USLS (First Lobe), dB	16	15	20
Front-to-Back Ratio at 180°, dB	32	32	30
Front-to-Back Ratio, Copolarization 180° ± 30°, dB	23	26	26
Isolation, Cross Polarization, dB	25	25	25
VSWR Return loss, dB	1.5 14.0	1.5 14.0	1.5 14.0
PIM, 3rd Order, 2 x 20 W, dBc	-153	-153	-153
Input Power per Port, maximum, watts	80	80	80

Packaging and Weights

V54-001-01-A0-E

Width, packed	390 mm 15.354 in
Depth, packed	442 mm 17.402 in
Length, packed	395 mm 15.551 in
Weight, gross	7 kg 15.432 lb

Regulatory Compliance/Certifications

Agency	Classification
UK-ROHS	Compliant

Included Products

APM40-VEN	– Elevation Tilt Mounting Kit for 2.0-4.3 in (50-110 mm) OD round members.
-----------	--