

# V17-001-01-A0-E



## 2-port Venue Antenna, 3300-4000 MHz, 17° HPBW, Fixed Tilt

- 17° Azimuth and Elevation Beamwidth
- Designed with CleanBeam™ technology
- Supports 2x2 MIMO
- 2T2R MetaLens™ antenna

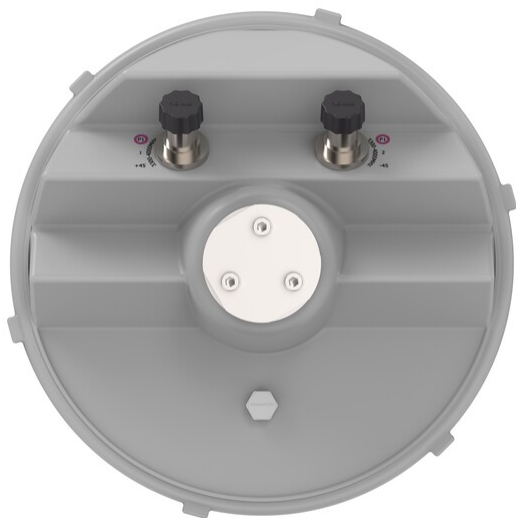
### General Specifications

Color	White
Grounding Type	RF connector inner conductor and body grounded to reflector and mounting bracket
Radome Material	FRP, UV resistant
RF Connector Interface	4.3-10 Female
RF Connector Quantity, total	2

### Dimensions

Width	299 mm   11.772 in
Depth	294 mm   11.575 in
Length	299 mm   11.772 in
Net Weight, without mounting kit	3.6 kg   7.937 lb

### Port Configuration



Electrical Specifications

Operating Frequency Band	3300 – 4000 MHz
Polarization	±45°

Electrical Specifications

	P1,P2	P1,P2	P1,P2
Frequency Band, MHz	3300–3800	3550–3700	3700–4000
RF Port	1,2	1,2	1,2
Gain, dBi	19	18.9	19.3
Beamwidth, Horizontal, degrees	17	17	16
Beamwidth, Vertical, degrees	17	16	16
USLS (First Lobe), dB	18	18	20
Front-to-Back Ratio at 180°, dB	40	41	37
Front-to-Back Ratio, Copolarization 180° ± 30°, dB	33	35	33
Isolation, Cross Polarization, dB	25	25	25
VSWR   Return loss, dB	1.5   14.0	1.5   14.0	1.5   14.0
PIM, 3rd Order, 2 x 20 W, dBc	-153	-153	-153
Input Power per Port, maximum, watts	80	80	80

# V17-001-01-A0-E

---

## Packaging and Weights

Width, packed	390 mm   15.354 in
Depth, packed	510 mm   20.079 in
Length, packed	395 mm   15.551 in
Weight, gross	7.8 kg   17.196 lb

## Regulatory Compliance/Certifications

Agency	Classification
UK-ROHS	Compliant

## Included Products

APM40-VEN	– Elevation Tilt Mounting Kit for 2.0-4.3 in (50-110 mm) OD round members.
-----------	--