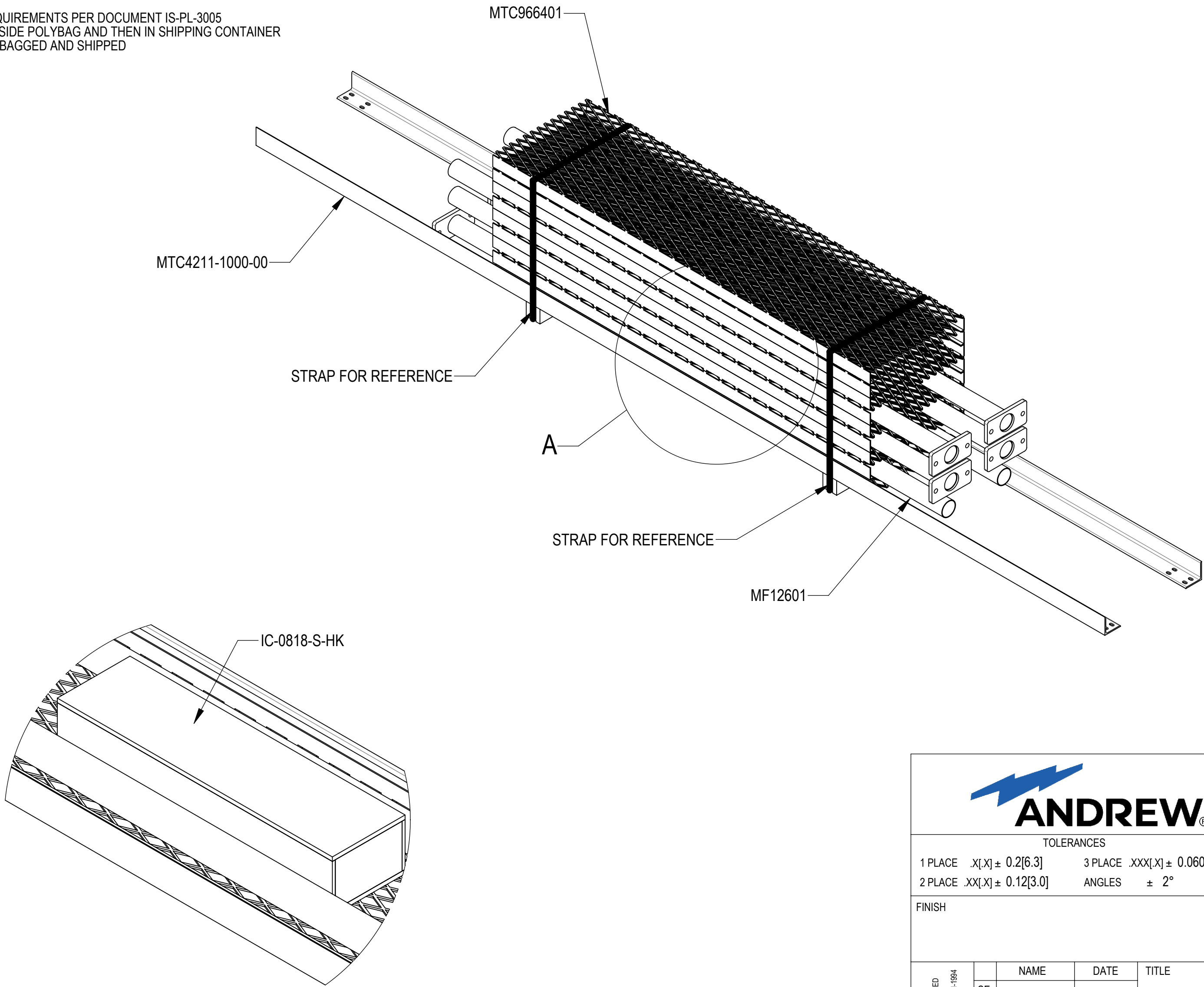





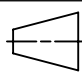


- 1.0 GENERAL NOTES
- 1.1 ALL METRIC DIMENSIONS ARE IN BRACKETS [X. X]
- 1.2 FOR PATENT INFO: <https://www.adwpat.com>
- 2.0 DESIGN NOTES
- 2.1 ANY HAZARDS OR OBSTRUCTIONS TO THE CLIMBING FACILITY AND SAFETY CLIMB MUST BE IDENTIFIED PRIOR TO INSTALLING THE APPURTENANCE. ADDITIONAL PRODUCTS MAY BE REQUIRED TO MAINTAIN THE INTEGRITY OF THE SAFETY CLIMB. DURING INSTALLATION, TEMPORARY AND/OR PERMANENT PRECAUTIONARY MEASURES SHOULD BE TAKEN TO PRESERVE THE CLIMBING FACILITY AND/OR SAFETY CLIMB.
- 3.0 MANUFACTURING/SPECIAL REQUIREMENTS
- 3.1 TIGHTEN ALL BOLTS SECURING FLAT PLATES BY THE TURN-OF-NUT METHOD. TIGHTEN ALL U-BOLTS USING TURN-OF-NUT METHOD WITH ATTENTION TO LEAVE EQUAL DISTANCE AND EQUAL FORCE ON EACH LEG OF THE U-BOLT.
- 4.0 TEST
- 5.0 PACKAGING
- 5.1 PACKAGING SHALL MEET ANDREW REQUIREMENTS PER DOCUMENT IS-PL-3005
- 5.2 PRINTED DOCUMENT TO BE PLACED INSIDE POLYBAG AND THEN IN SHIPPING CONTAINER
- 5.3 EXTRA HARDWARE MAY BE SUPPLIED, BAGGED AND SHIPPED

REVISIONS			
REV.	DESCRIPTION	DATE	APPROVED
A	INITIAL RELEASE	RY1002 25JUN25	YW1047 50103556AMO



DETAIL A
SCALE 2 : 15
HIDE GRATING AND BASE SHOE FOR CLARITY

<div>ANDREW® an Amphenol company</div>										
TOLERANCES					SAP MATERIAL MASTER					
1 PLACE .X[X] ± 0.2[6.3]		3 PLACE .XXX[X] ± 0.060[1.5]			IC-0818-S					
2 PLACE .XX[X] ± 0.12[3.0]		ANGLES ± 2°								
FINISH				MATERIAL						
UNLESS OTHERWISE SPECIFIED DIMENSIONS ARE IN INCHES INTERPRET PER ANSI Y 14.5M-1994		NAME	DATE	08'X18' ICE CANOPY BASE SHOE						
	CE	RY1002	25JUN25							
	RW	RY1002	06/26/2025							
				SCALE 1:15 DOCUMENT NO. IC-0818-S						
	AD	YW1047	06/26/2025							
	RE	RY1002	06/26/2025							
	ECN 50103556AMO									
SIZE	Auth Group		INSL	MODEL			DRAWING			SHEET 1 OF 2
C			VERSION	STATUS	REVISION	VERSION	STATUS	REVISION		
			00	RE	A	00	RE	A		

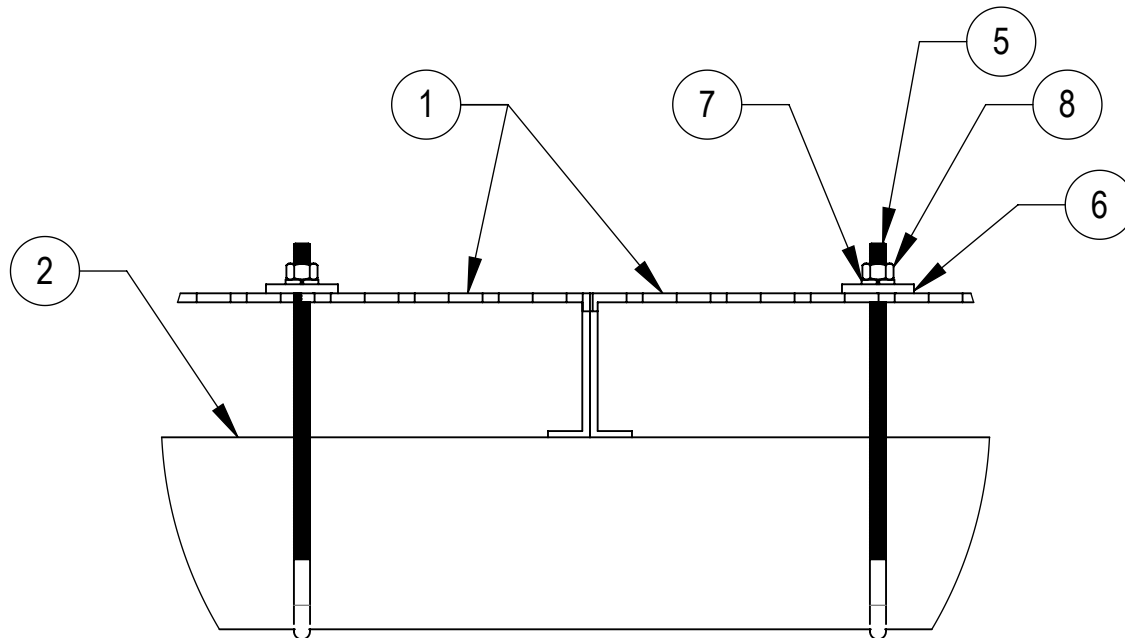
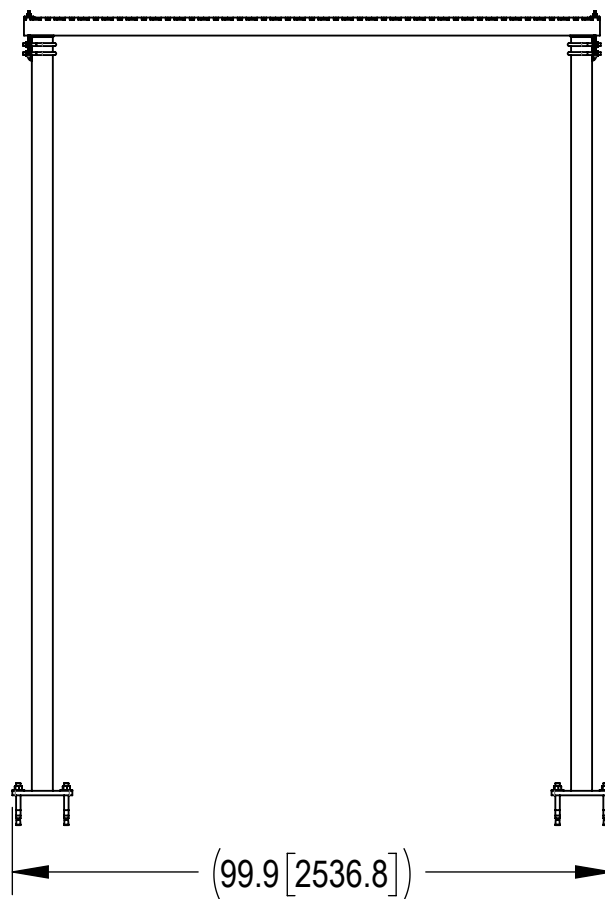
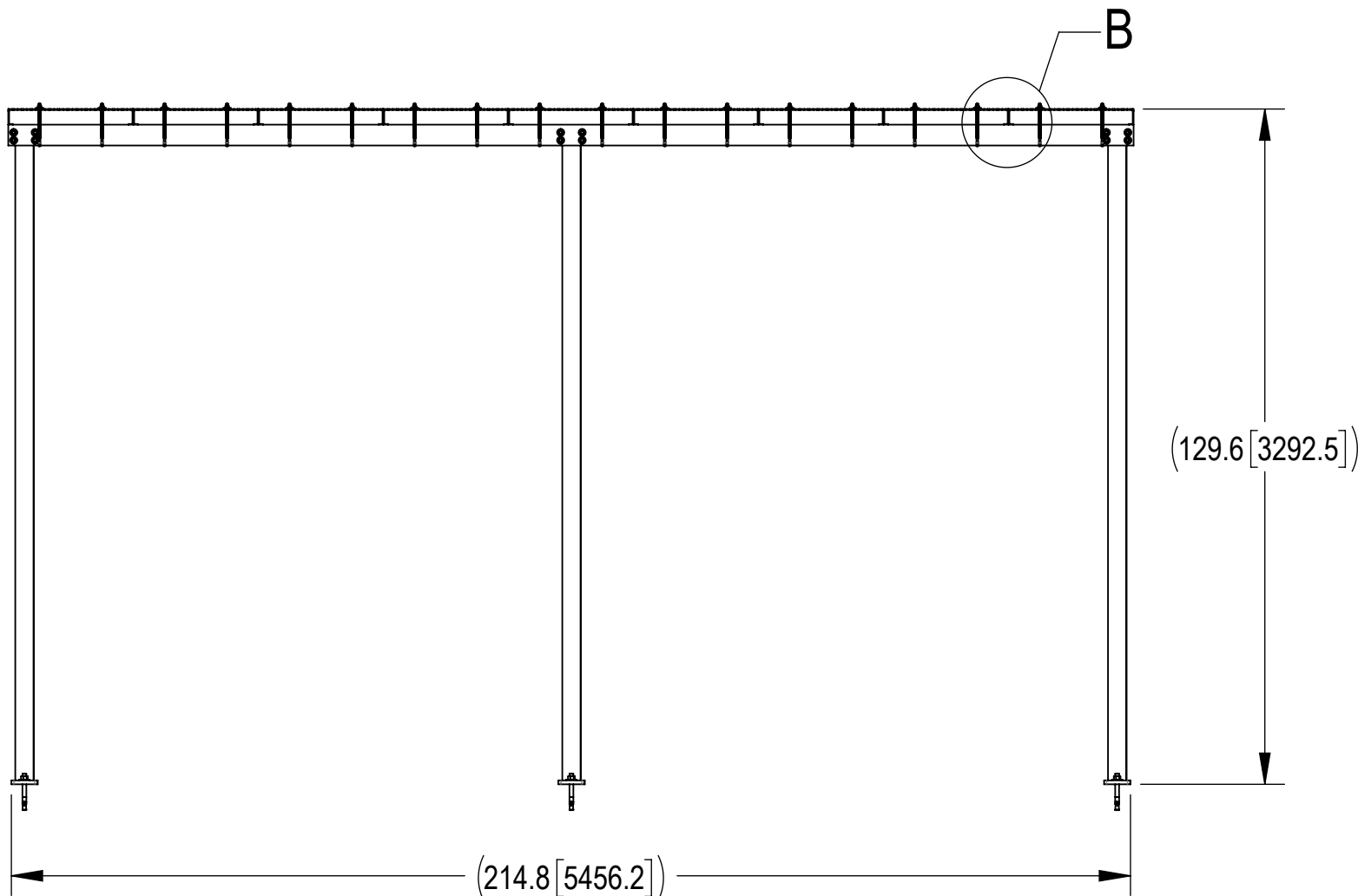
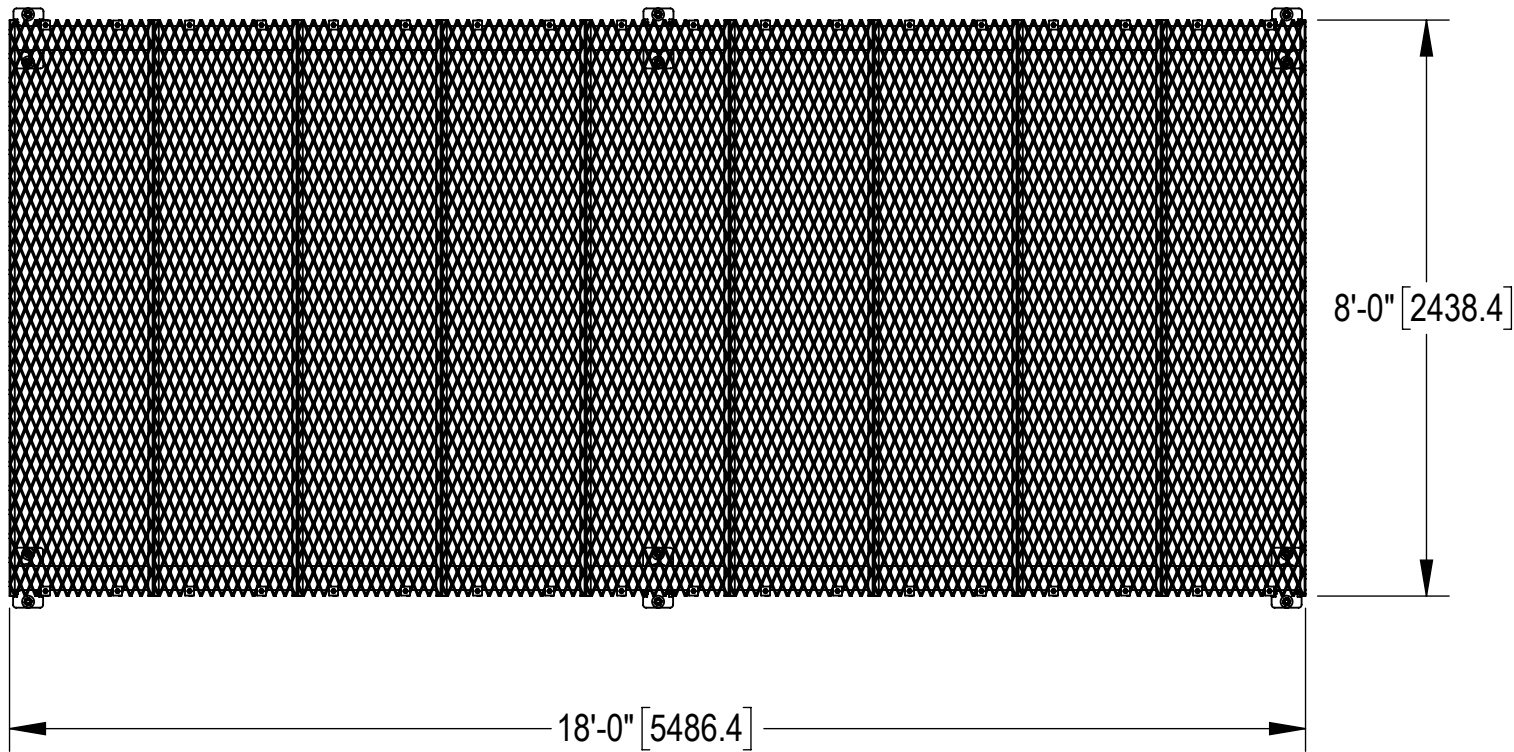
Confidential

D

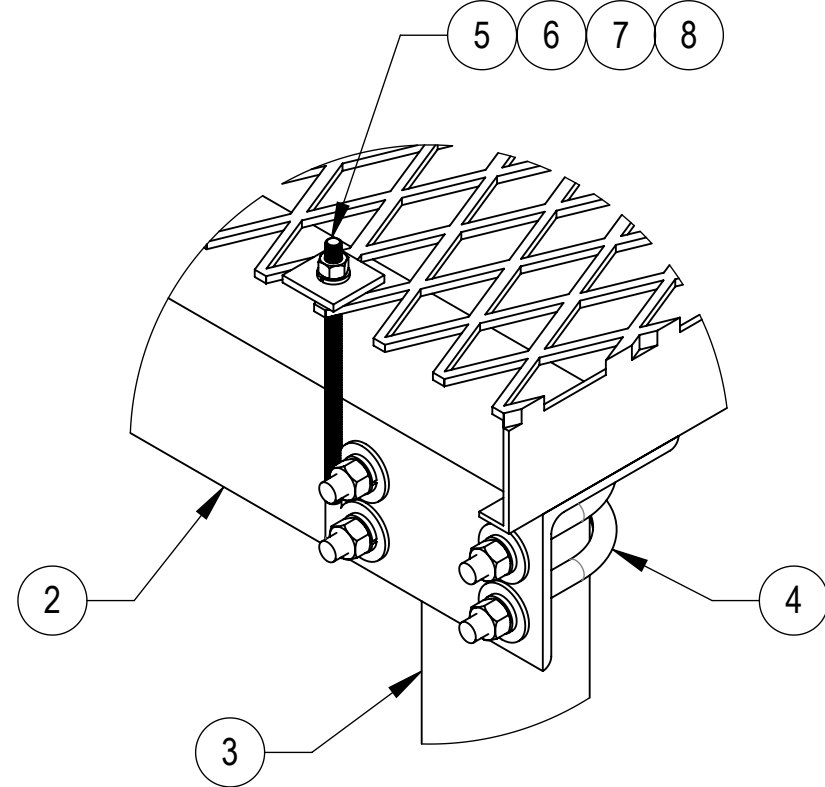
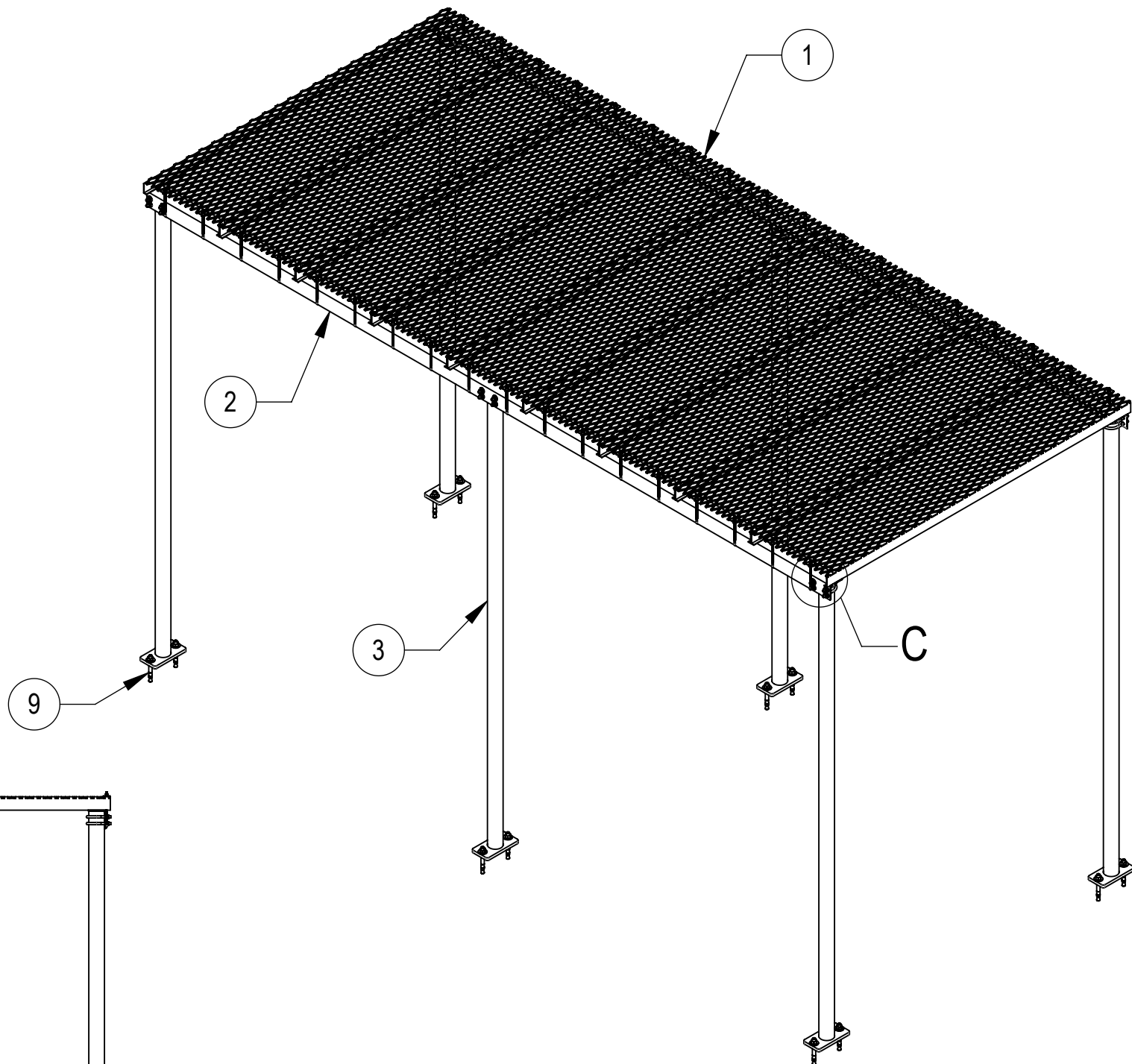
C

B

A



DETAIL B
SCALE 1 : 4



DETAIL C
SCALE 1 : 4

COMPONENT PART NUMBERS PROVIDED FOR ASSEMBLY PURPOSES;
INDIVIDUAL COMPONENTS MAY BE SHIPPED AS PARTS WITHIN AN INCLUDED KIT.

ITEM	PART NO.	DESCRIPTION	QTY.	WEIGHT	NOTE NO.
1	MTC966401	SAFETY GRATING 24" X 8'	9	88.80 LBS	
2	MTC4211-1000-00	18' ICE SHIELD SUPPORT BRACKET	2	117.72 LBS	
3	MF12601	BASE SHOE WELDMENT, 10' 6"	6	53.81 LBS	
4	GUB-4355	1/2" X 3-5/8" X 5" GALV U-BOLT	12	0.71 LBS	
5	GJB0380	8" GALV J-BOLT KIT	36	0.23 LBS	
6	MT-387	SQUARE WASHER 1-1/2"X1-1/2" W/ 7/16 HOLE	36	0.11 LBS	
7	GWL-03	3/8" GALV LOCK WASHER	36	0.01 LBS	
8	GN-03	3/8" GALV HEX NUT	36	0.02 LBS	
9	MT-287	3/4" ANCHOR BOLT	12	1.08 LBS	

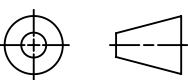


TITLE
08'X18' ICE CANOPY BASE SHOE

SIZE
C

SCALE
1:32

DOCUMENT NO.
IC-0818-S



DRAWING			SHEET 2 OF 2
VERSION	STATUS	REVISION	
00	RE	A	

Confidential