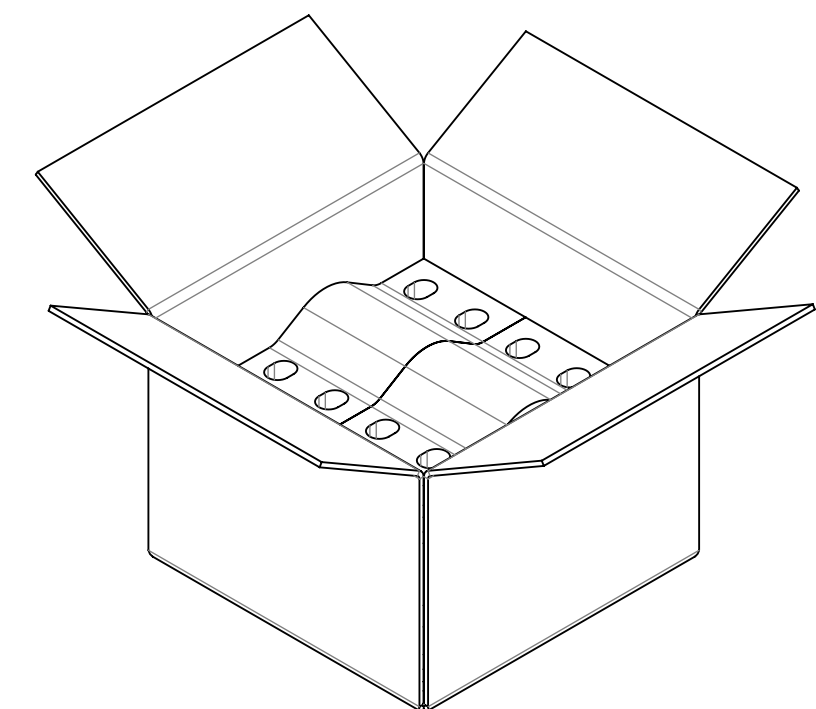
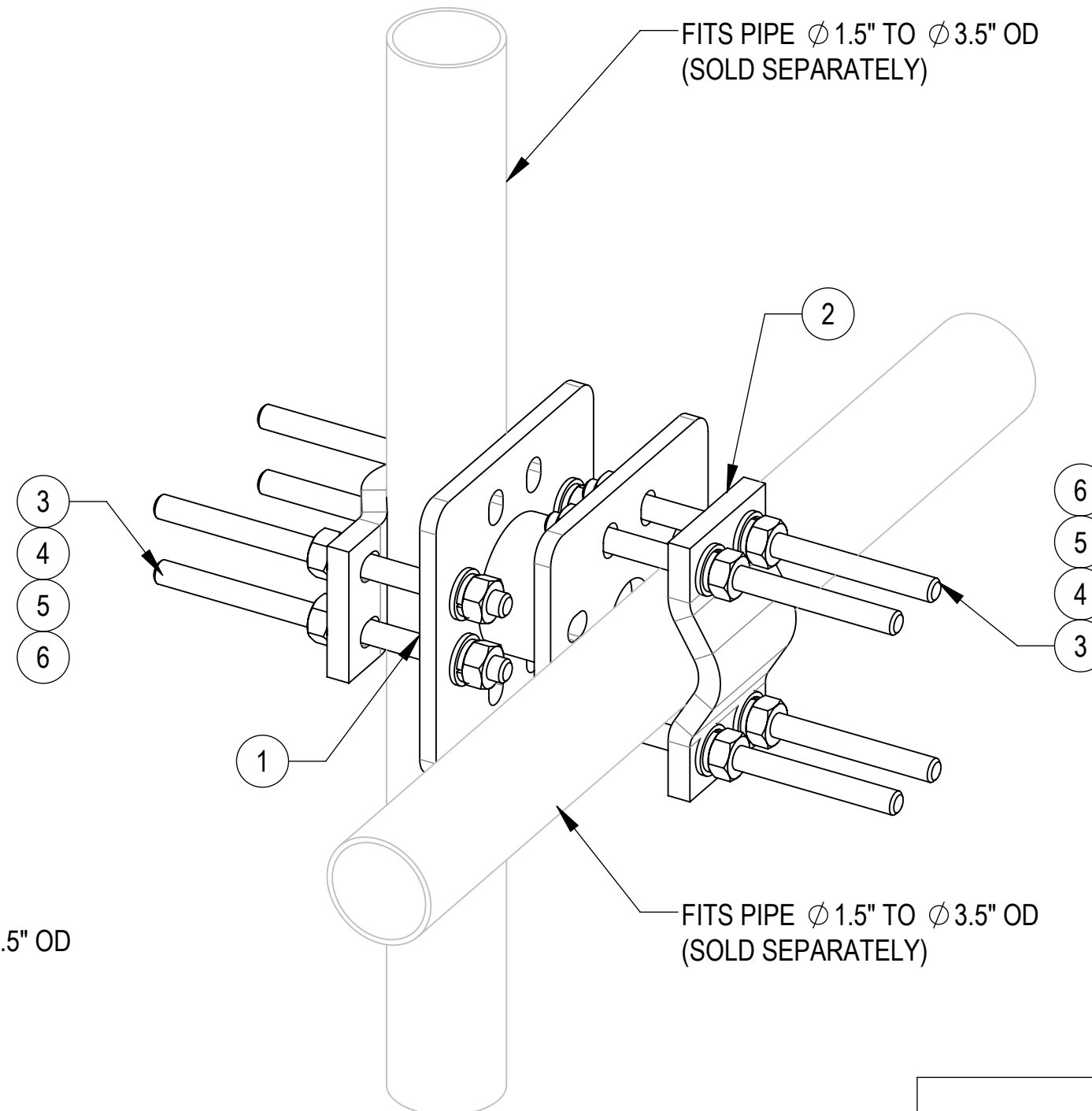
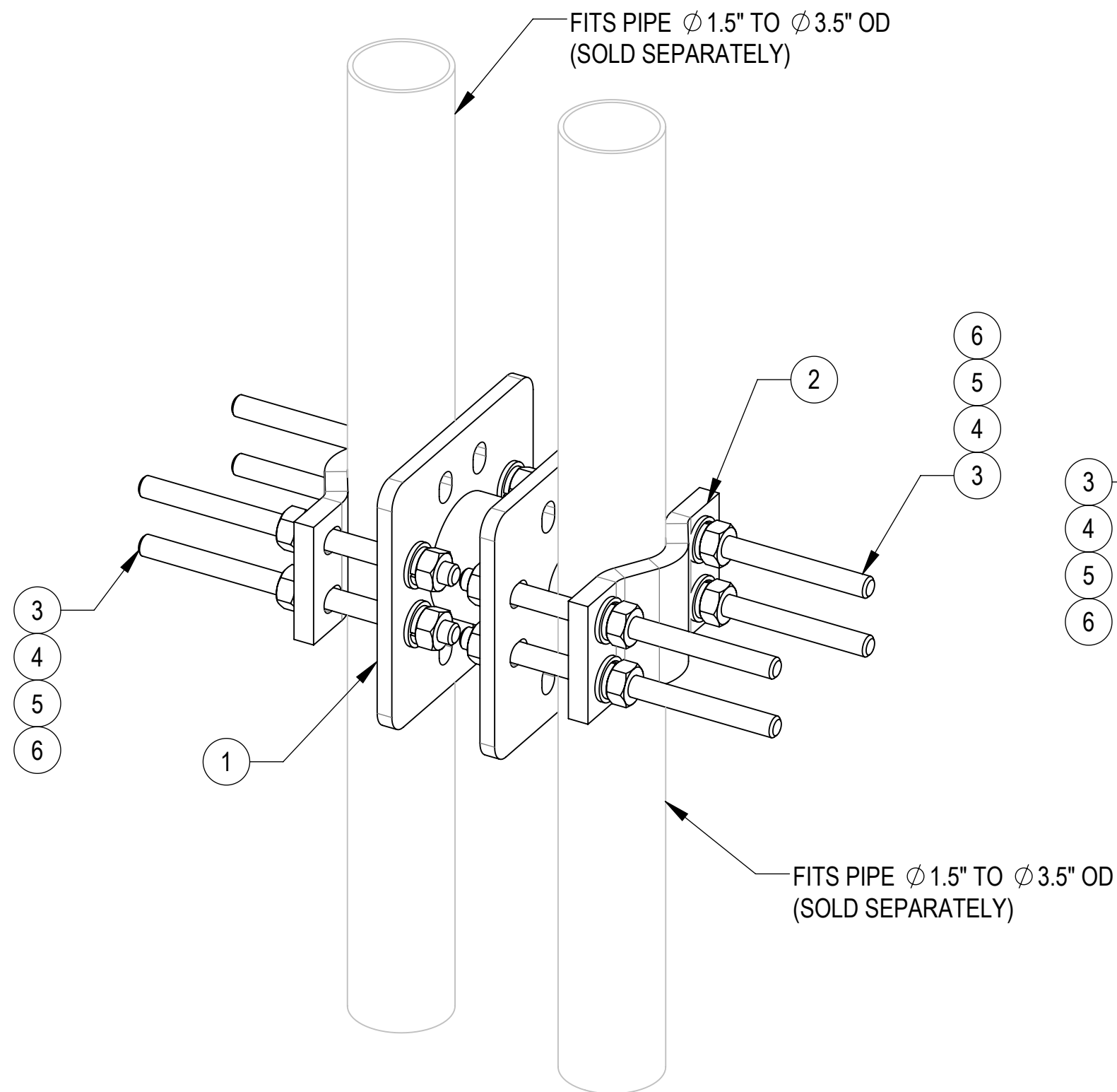


- 1.0 GENERAL NOTES
- 1.1 ALL METRIC DIMENSIONS ARE IN BRACKETS [X. X]
- 1.2 FOR PATENT INFO: <https://www.adwpat.com>
- 2.0 DESIGN NOTES
- 2.1 ANY HAZARDS OR OBSTRUCTIONS TO THE CLIMBING FACILITY AND SAFETY CLIMB MUST BE IDENTIFIED PRIOR TO INSTALLING THE APPURTENANCE. ADDITIONAL PRODUCTS MAY BE REQUIRED TO MAINTAIN THE INTEGRITY OF THE SAFETY CLIMB. DURING INSTALLATION, TEMPORARY AND/OR PERMANENT PRECAUTIONARY MEASURES SHOULD BE TAKEN TO PRESERVE THE CLIMBING FACILITY AND/OR SAFETY CLIMB.
- 3.0 MANUFACTURING/SPECIAL REQUIREMENTS
- 3.1 TIGHTEN ALL BOLTS SECURING FLAT PLATES BY THE TURN-OF-NUT METHOD. TIGHTEN ALL U-BOLTS USING TURN-OF-NUT METHOD WITH ATTENTION TO LEAVE EQUAL DISTANCE AND EQUAL FORCE ON EACH LEG OF THE U-BOLT.
- 4.0 TEST
- 5.0 PACKAGING
- 5.1 PACKAGING SHALL MEET ANDREW REQUIREMENTS PER DOCUMENT IS-PL-3005
- 5.2 PRINTED DOCUMENT TO BE PLACED INSIDE POLYBAG AND THEN IN SHIPPING CONTAINER
- 5.3 EXTRA HARDWARE MAY BE SUPPLIED, BAGGED AND SHIPPED

REVISIONS			
REV.	DESCRIPTION	DATE	APPROVED
A	INITIAL RELEASE	YX1027 16APR25	YZ1080 50102475AMO
B	SCP1001D (ITEM2) & QTY 2 WAS SCP10 & QTY 4; UPDATED PACKAGING VIEW	YX1027 28MAY25	YZ1080 50103111AMO
C	SC-P10D (ITEM2) WAS SCP1001D	YX1027 16JUL25	YZ1080 50103936AMO
D	860678540-S0301-00 (ITEM1) WAS 860678540-0301-00; ADDED PIPE HORIZONTAL INSTALL VIEW	YC1059 28JUL25	YZ1080 50103908AMO



## PIPE HORIZONTAL INSTALL


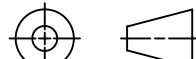
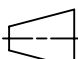
## PIPE VERTICAL INSTALL

COMPONENT PART NUMBERS PROVIDED FOR ASSEMBLY PURPOSES;  
INDIVIDUAL COMPONENTS MAY BE SHIPPED AS PARTS WITHIN AN INCLUDED KIT.

ITEM	PART NO.	DESCRIPTION	QTY.	WEIGHT	NOTE NO.
1	860678540-S0301-00	3" STANDOFF CROSSOVER WELDMENT	1	8.39 LBS	
2	SC-P10D	SMALL DISH DUAL HALF CLAMP	2	2.40 LBS	
3	MT-379-8	1/2" X 8" GALV THREADED ROD	8	0.44 LBS	
4	GWFO4A	1/2" GALV FLAT WASHER (A325)	16	0.02 LBS	
5	GWL-04	1/2" GALV LOCK WASHER	16	0.01 LBS	
6	GN-04A	1/2" GALV HEX NUT (A194 2H)	16	0.07 LBS	

DENSITY		lbs/in <sup>3</sup>
MASS	18.29	lbs
VOLUME	64.62	in <sup>3</sup>
SURFACE AREA	506.88	in <sup>2</sup>
HEIGHT	6.25"	
LENGTH	16.20"	
WIDTH	6.25"	

**Confidential**

<div></div>									
TOLERANCES						SAP MATERIAL MASTER			
1 PLACE .X[X] ± 0.2[6.3]		3 PLACE .XXX[X] ± 0.060[1.5]				860678540-03			
2 PLACE .XX[X] ± 0.12[3.0]		ANGLES ± 2°							
FINISH					MATERIAL				
UNLESS OTHERWISE SPECIFIED DIMENSIONS ARE IN INCHES INTERPRET PER ANSI Y 14.5M-1994		NAME	DATE	TITLE					
	CE	YC1059	28JUL25						
	RW	YC1059	07/28/2025	3" STANDOFF CROSSOVER WELDMENT, KIT					
	AD	YZ1080	07/29/2025						
	RE	YMENG	07/29/2025						
ECN 50103908AMO			SCALE 1:3		DOCUMENT NO. 860678540-03				
SIZE	Auth Group	INSL	MODEL			DRAWING			SHEET 1 OF 1
C			VERSION	STATUS	REVISION	VERSION	STATUS	REVISION	
			03	RE	D	03	RE	D	