



STRUCTURAL SUPPORT PRODUCTS

MICROWAVE ANTENNA APPLICATION PRODUCT SELECTION GUIDE

2025

Table of Contents

Tower mounts	3
<i>Leg mounting solutions</i>	4
<i>Application guide</i>	10
<i>Face mounting solutions</i>	12
<i>Application guide</i>	18
<i>Waveguide protection solutions</i>	22
Monopole mounts	23
<i>Low-profile chain mounts</i>	24
<i>Light duty chain mounts</i>	25
<i>Heavy duty chain mounts</i>	26
<i>Microwave components</i>	27
<i>Application guide</i>	28
Roof-top mounts	30
<i>Roof frames</i>	31
<i>Mounting components</i>	33
Waveguide	36
<i>Coaxial support components</i>	37
<i>Waveguide bridge components</i>	38
<i>Cable ladder kits</i>	39
Site related	40
<i>Microwave ice shields</i>	41
<i>Microwave shield mounts</i>	42
<i>Microwave ice shields</i>	44
<i>Components</i>	45
<i>Equipment platforms</i>	46
<i>Ice and rain components</i>	47
<i>Handrail and step kits</i>	48

SELECTION GUIDE

TOWER MOUNTS

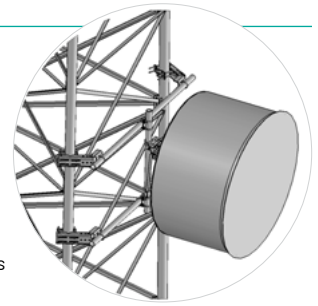
Universal Pipe Mount Kits
Page 8



Microwave Dish Strut Support
Page 10

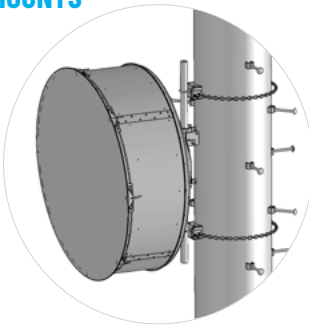


Tower Face Mounts
Page 16

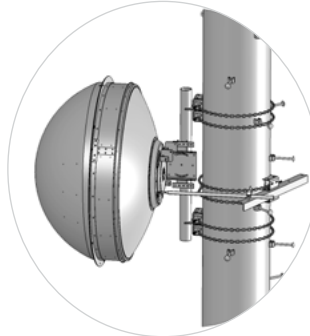


MONOPOLE MOUNTS

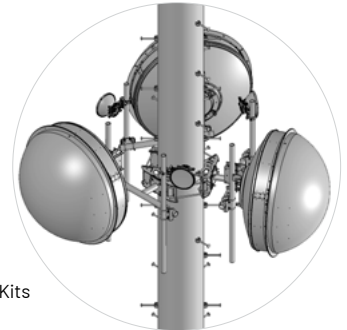
Low-profile
Chain Mounts
Page 28



Heavy Duty
Chain Mounts
Page 30



Low-profile
Co-location Kits
Page 31

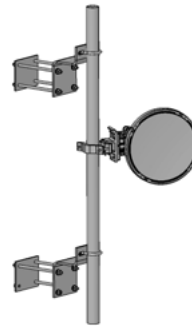


ROOF-TOP MOUNTS

Universal Tripod Mounts
Page 31



Wall Mounts
Page 34

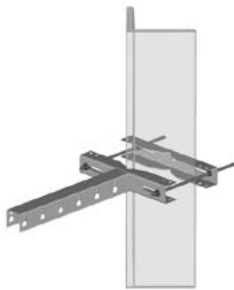


Roof-top Peak
Mounts
Page 35



WAVEGUIDE

Coaxial Supports
Page 37



Waveguide
Bridge Kits
Page 38

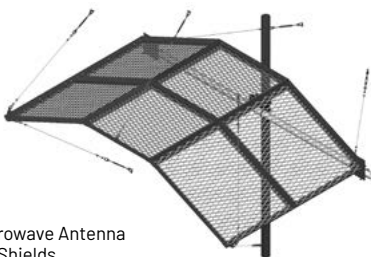


Universal Cable
Ladder Kits
Page 44



SITE RELATED COMPONENTS

Microwave Antenna
Ice Shields
Page a41



Power Telco Racks
Page 45



Equipment
Platforms
Page 46





TOWER MOUNTS

- Tower leg mounting solutions
- Tower face mounting solutions

FOR OUR FULL TOWER PRODUCT PORTFOLIO, PLEASE VISIT OUR
TOWER MOUNTS SITE OR FOLLOW THE QR CODE:
TOWER MOUNTS | ANDREW

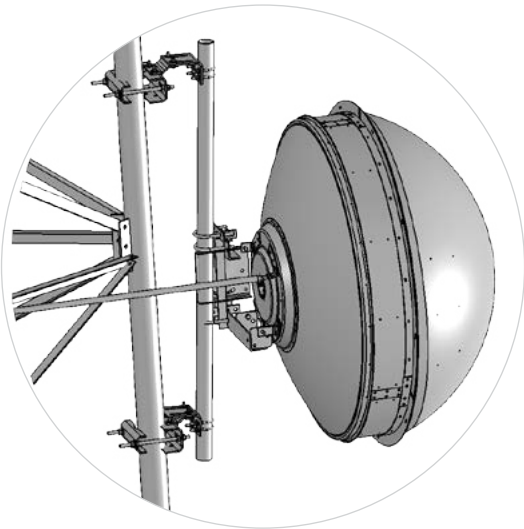
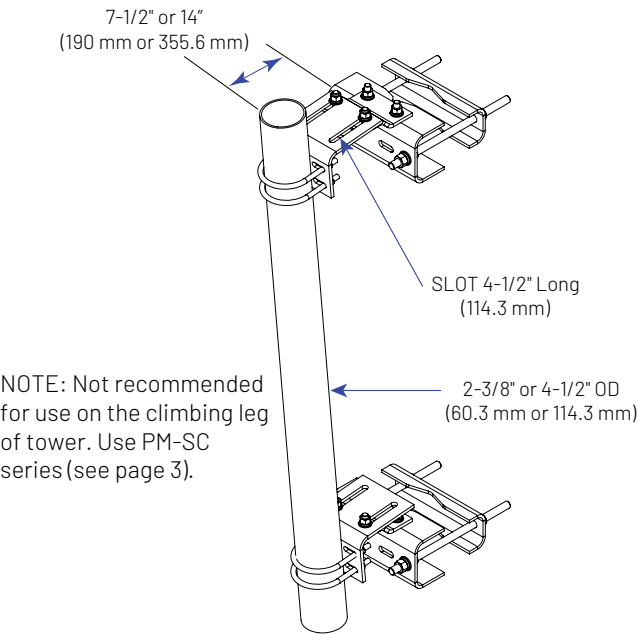


LEG MOUNTING SOLUTIONS

UNIVERSAL SLIDING PIPE MOUNT KITS		UNIVERSAL SLIDING PIPE MOUNT KITS			
Application:	Lattice towers	MOUNTING	Pipes Included	Stand-off	Material ID
Size:	2-3/8" (60.3 mm) OD or 4-1/2" (114.3 mm) OD	For Round or 60° Angle Legs up to 8" (203.2 mm) or 90° Angle Legs up to 6" (152.4 mm)	None	N/A	PM-SU2-B
Design:	Pipe with saddle mount and adjustable clamps		2-3/8" OD x 72" (60.3 mm OD x 1.8 m)		PM-SU2-72
			2-3/8" OD x 96" (60.3 mm OD x 2.4 m)		PM-SU2-96
Feature:	Universal sliding bracket with up to 7° of taper	For Round or 60° Angle Legs up to 16" (406.4 mm) or 90° Angle Legs up to 12" (304.8 mm)	None	14" (355.6 mm)	PM-SU2L-B
Mounts to:	Straight or tapered legs up to 16" (406.4 mm) OD, 16" (406.4 mm) angle 60°, or 12" (304.8 mm) angle 90°		2-3/8" OD x 72" (60.3 mm OD x 1.8 m)		PM-SU2L-72
			2-3/8" OD x 96" (60.3 mm OD x 2.4 m)		PM-SU2L-96
Material:	Hot dip galvanized steel		None	N/A	PM-SU4-B
Includes:	Universal saddle mount, sliding pipe mount brackets, with or without pipe		4-1/2" OD x 63" (114.3 mm OD x 1.6 m)		PM-SU4-63
			4-1/2" OD x 96" (114.3 mm OD x 2.4 m)		PM-SU4-96
Order Separately:	Pipes for base kits		None	14" (355.6 mm)	PM-SU4L-B
Wind Rating*: 120 mph (BWS) per latest revision of ANSI/TIA-222 at 150' AGL * Typical installation of one 8' microwave antenna with strut/stiff arm			4-1/2" OD x 63" (114.3 mm OD x 1.6 m)		PM-SU4L-63
			4-1/2" OD x 96" (114.3 mm OD x 2.4 m)		PM-SU4L-96
		None	N/A	PML-SU2-B	
		2-3/8" OD x 72" (60.3 mm OD x 1.8 m)		PML-SU2-72	
		2-3/8" OD x 96" (60.3 mm OD x 2.4 m)		PML-SU2-96	
		None	14" (355.6 mm)	PML-SU2L-B	
		2-3/8" OD x 72" (60.3 mm OD x 1.8 m)		PML-SU2L-72	
		2-3/8" OD x 96" (60.3 mm OD x 2.4 m)		PML-SU2L-96	
		None	N/A	PML-SU4-B	
		4-1/2" OD x 63" (114.3 mm OD x 1.6 m)		PML-SU4-63	
4-1/2" OD x 96" (114.3 mm OD x 2.4 m)	PML-SU4-96				
		None	14" (355.6 mm)	PML-SU4L-B	
		4-1/2" OD x 63" (114.3 mm OD x 1.6 m)		PML-SU4L-63	
		4-1/2" OD x 96" (114.3 mm OD x 2.4 m)		PML-SU4L-96	

Wind Rating*: 120 mph (BWS) per latest revision of ANSI/TIA-222 at 150' AGL

* Typical installation of one 8' microwave antenna with strut/stiff arm



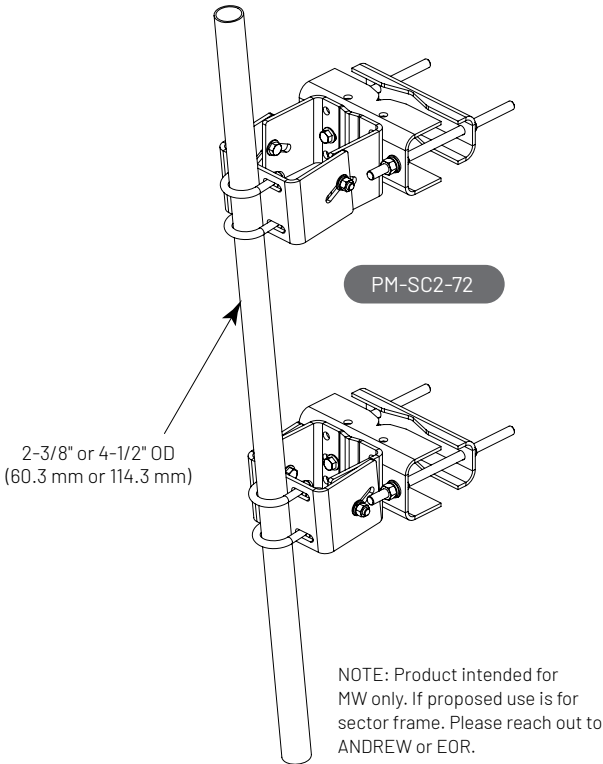
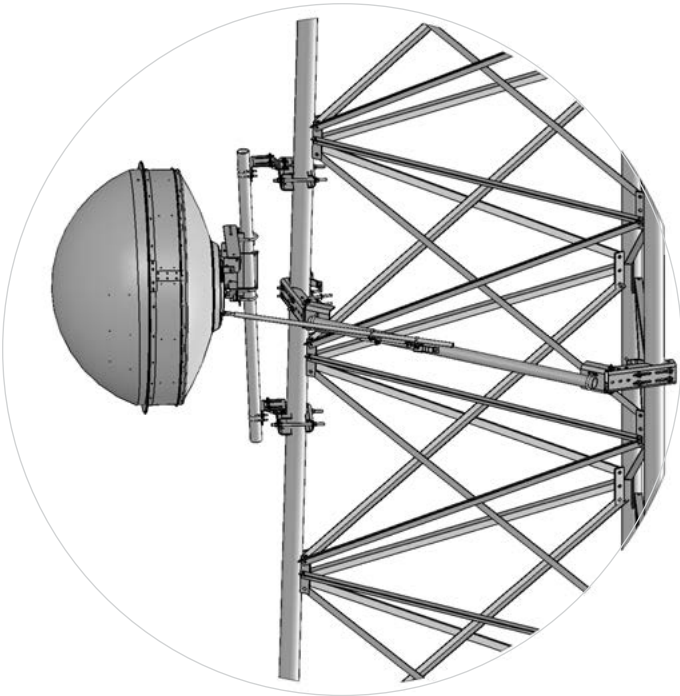
LEG MOUNTING SOLUTIONS

UNIVERSAL PIPE MOUNT KITS	
Application:	Antenna leg mounting for round or angle towers
Size:	2-3/8" (60.3 mm) OD or 4-1/2" (114.3 mm) OD
Design:	Pipe with saddle mount and adjustable clamps
Feature:	Open face taper adjustment
Mounts to:	Straight or tapered legs up to 16" (406.4 mm) OD, 16" (406.4 mm) angle 60°, or 12" (304.8 mm) angle 90°
Material:	Hot dip galvanized steel
Includes:	Universal saddle mount, taper adjustment brackets, with or without pipe
Order Separately:	Pipes for base kits

Wind Rating*: 120 mph (BWS) per latest revision of ANSI/TIA-222 at 150' AGL

* Typical installation of one 8' microwave antenna with strut/stiff arm

UNIVERSAL SLIDING PIPE MOUNT KITS		
Mounting	Pipes Included	Material ID
For Round or 60° Angle Legs up to 8" (203.2 mm) or 90° Angle Legs up to 6" (152.4 mm)	None	PM-SC2-B
	2-3/8" OD x 72" (60.3 mm OD x 1.8 m)	PM-SC2-72
	2-3/8" OD x 96" (60.3 mm OD x 2.4 m)	PM-SC2-96
	None	PM-SC4-B
For Round or 60° Angle Legs up to 16" (406.4 mm) or 90° Angle Legs up to 12" (304.8 mm)	4-1/2" OD x 63" (114.3 mm OD x 1.6 m)	PM-SC4-63
	4-1/2" OD x 96" (114.3 mm OD x 2.4 m)	PM-SC4-96
	None	PML-SC2-B
	2-3/8" OD x 72" (60.3 mm OD x 1.8 m)	PML-SC2-72
	2-3/8" OD x 96" (60.3 mm OD x 2.4 m)	PML-SC2-96
	None	PML-SC4-B
	4-1/2" OD x 63" (114.3 mm OD x 1.6 m)	PML-SC4-63
	4-1/2" OD x 96" (114.3 mm OD x 2.4 m)	PML-SC4-96



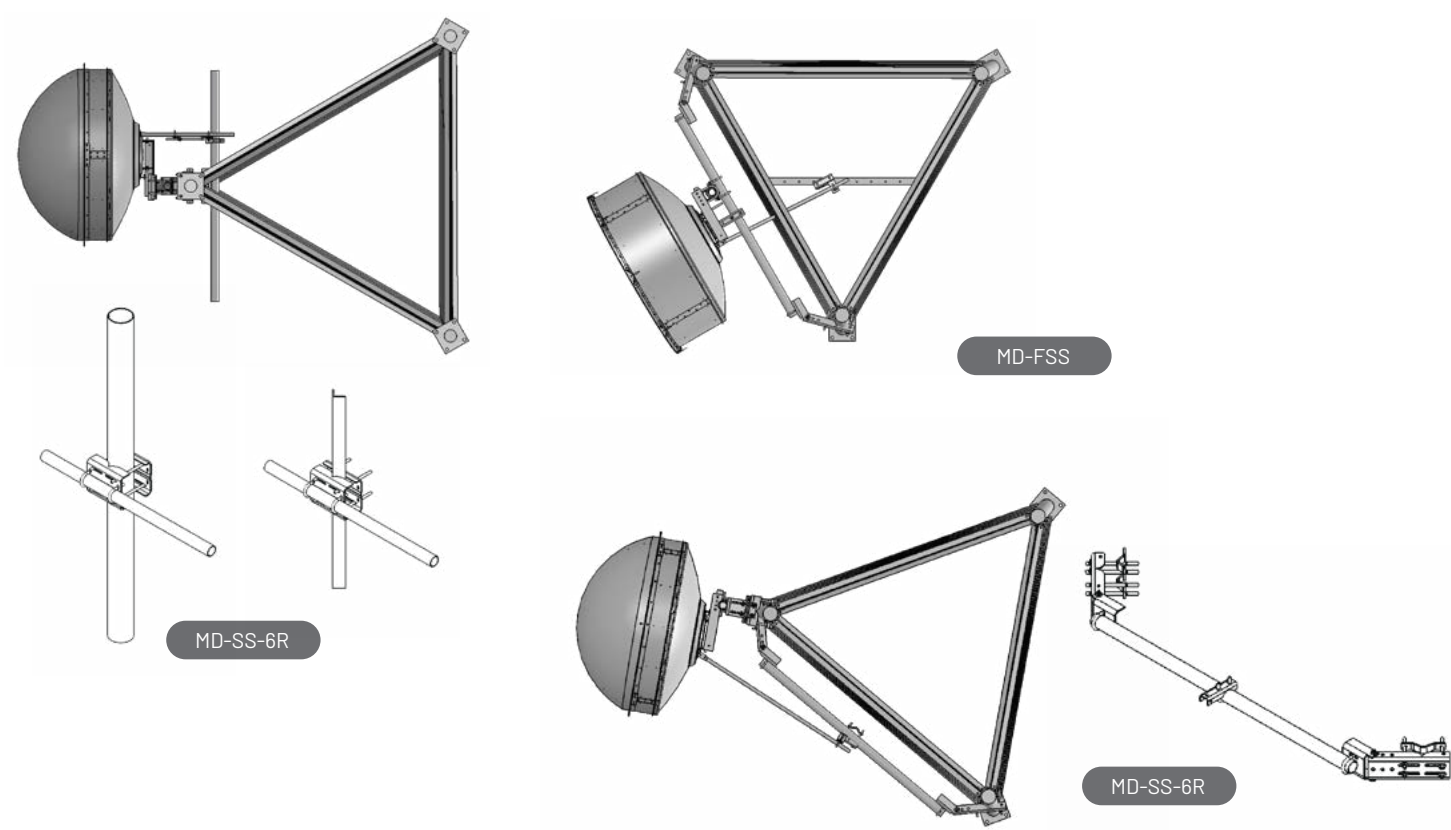
LEG MOUNTING SOLUTIONS

MICROWAVE DISH SUPPORT	
Application:	Structural strut supports for round or angle tower legs
Size:	4', 6', 8', or 10' (1.2 m, 1.8 m, 2.4 m, or 3.1 m) Tower faces
Design:	Round or angle strut support kits
Feature:	Tower face strut support kits
Mounts to:	Straight or tapered legs up to 16" (406.4 mm) OD, 16" (406.4 mm) angle 60°, or 12" (304.8 mm) angle 90°
Material:	Hot dip galvanized steel

TOWER FACE MOUNTED MICROWAVE DISH CHANNEL SUPPORT KIT		
Mounting	Pipes Included	Material ID
For Round or 60° Angle Legs up to 8" (203.2 mm) or 90° Angle Legs up to 6" (152.4 mm)	6' (1.8 m)	MD-CS-6R
	8' (2.4 m)	MD-CS-8R
	10' (3.1 m)	MD-CS-10R
For Round or 60° Angle Legs up to 16" (406.4 mm) or 90° Angle Legs up to 12" (304.8 mm)	6' (1.8 m)	MDL-CS-6R
	8' (2.4 m)	MDL-CS-8R
	10' (3.1 m)	MDL-CS-10R

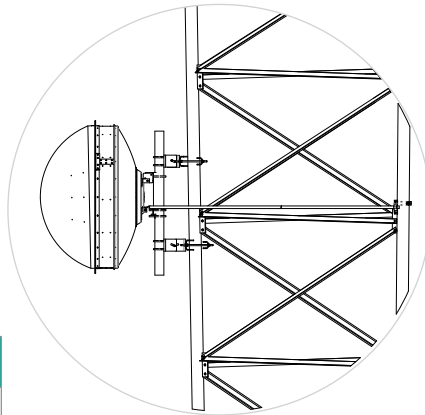
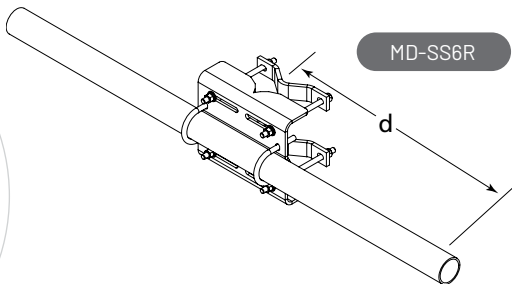
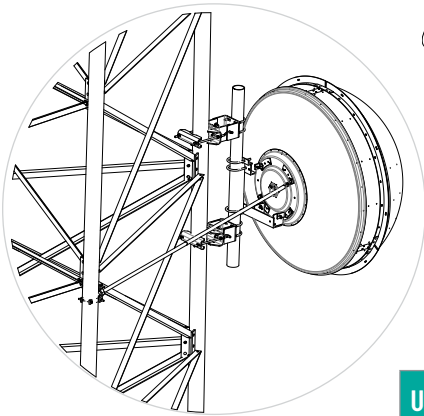
TOWER LEG MOUNTED MICROWAVE DISH CHANNEL SUPPORT KIT		
Mounting	Pipes Included	Material ID
For Round or 60° Angle Legs up to 8" (203.2 mm) or 90° Angle Legs up to 6" (152.4 mm)	6' (1.8 m)	MD-SS-6R
	8' (2.4 m)	MD-SS-8R
For Round or 60° Angle Legs up to 16" (406.4 mm) or 90° Angle Legs up to 12" (304.8 mm)	6' (1.8 m)	MDL-SS-6R
	8' (2.4 m)	MDL-SS-8R

MICROWAVE DISH FACE STRUT SUPPORT	
Dimensions	Material ID
3/8" x 3" x 3" x 5' 6" (9.5 mm x 76.2 mm x 76.2 mm x 1.7m)	MD-FSS

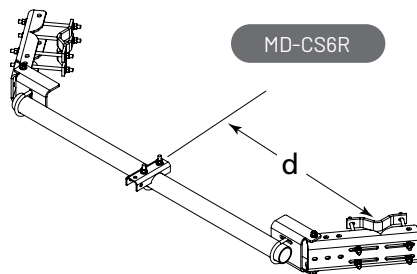
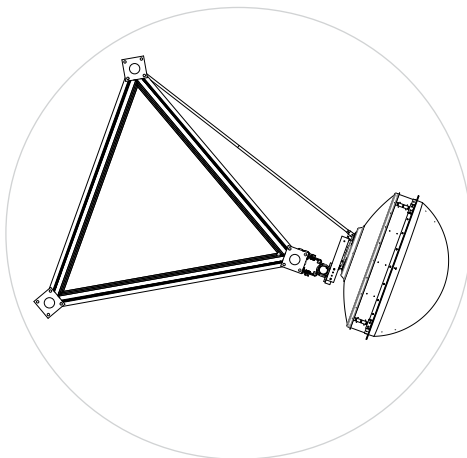
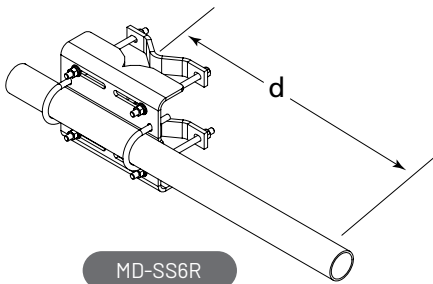


LEG MOUNTING SOLUTIONS

NOTE: It is assumed that a licensed and qualified structural engineer has reviewed the tower structure for the loads created by the microwave antennas and strut supports.



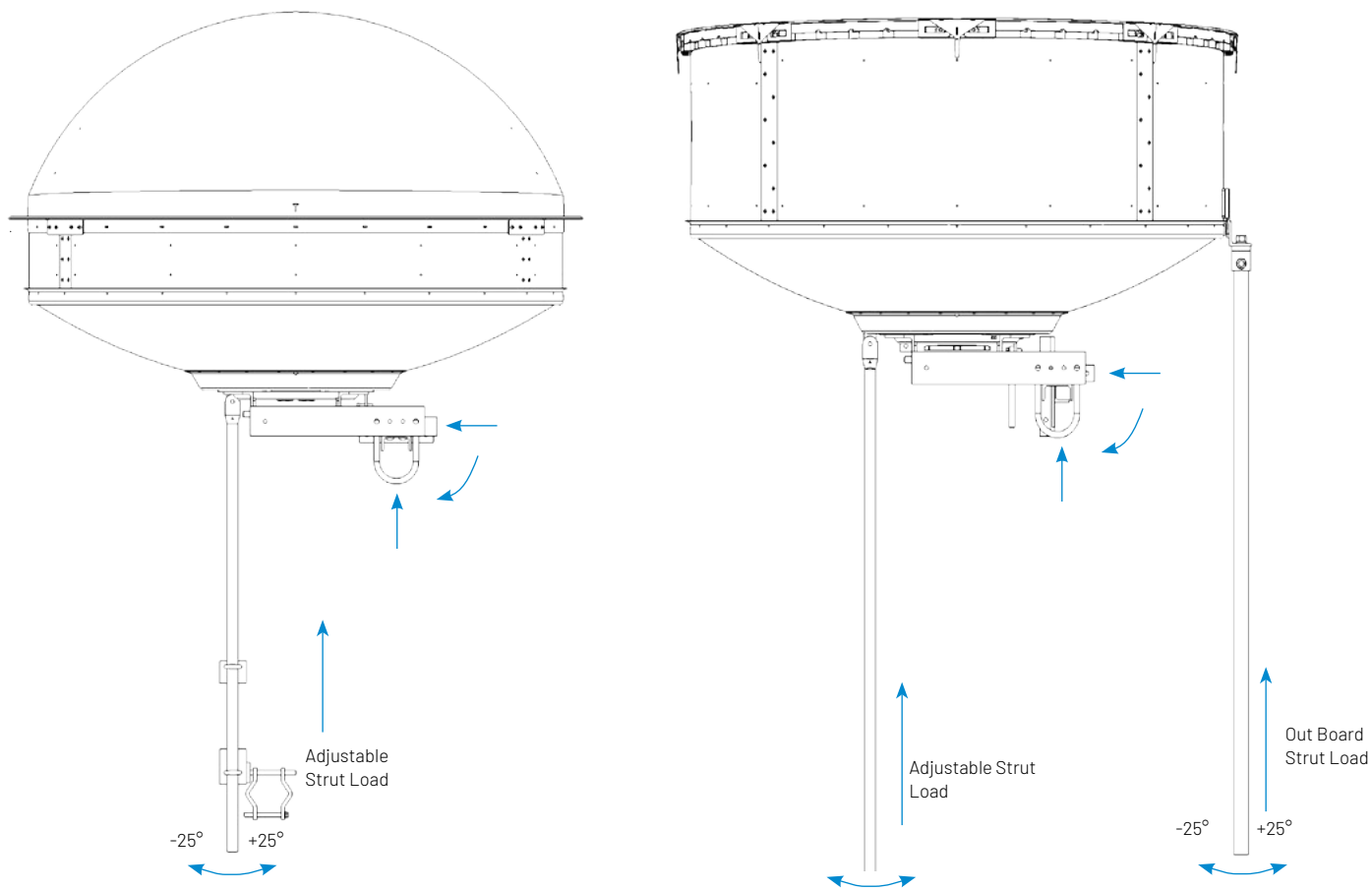
USAGE	MD-SS6R	MD-SS8R	MD-SS10R
Saddle Mount Attached in Center of Pipe			
Max. distance from leg (d)	36"	48"	60"
Acceptable Load	2500 lb	2000 lb	1500 lb



USAGE	MD-SS6R	MD-SS8R	MD-SS10R
Saddle Mount Attached at One End of Pipe			
Max. distance from leg (d)	60"	84"	108"
Acceptable Load	1500 lb	1000 lb	500 lb

USAGE	MD-CS6R	MD-CS8R	MD-CS10R
Pipe Attached at Each End to Tower Leg Mount			
Max. distance from legs (d)	36"	48"	60"
Acceptable Load	2500 lb	2500 lb	2500 lb

LEG MOUNTING SOLUTIONS



SIZE FT. (M)	ADJUSTABLE STRUT FORCE, LB (N)	FIXED STRUT FORCE, LB (N)
4 (1.2)	500 (2200)	—
6 (1.8)	1400 (9207)	—
8 (2.4)	958 (4261)	1265 (5627)
10 (3.0)	1320 (5871)	1987 (8838)
12 (3.7)	1799 (8001)	2585 (11498)

A 4' dish strut/stiff arm can see in survival winds up to 600 lbs. of load, and in working load wind conditions the mount cannot flex or deflect more than 0.1". A six foot dish strut/stiff arm can see in survival winds up to 1400 lbs of load, and in working load wind conditions the mount cannot flex or deflect more than 0.1". In addition this arm must have a horizontal angle of less than 25° and less than 5° in the vertical direction. Struts over 10 feet should be analyzed by a competent professional. (Illustration on Page 25)

LEG MOUNTING SOLUTIONS

MICROWAVE STRUT SUPPORT

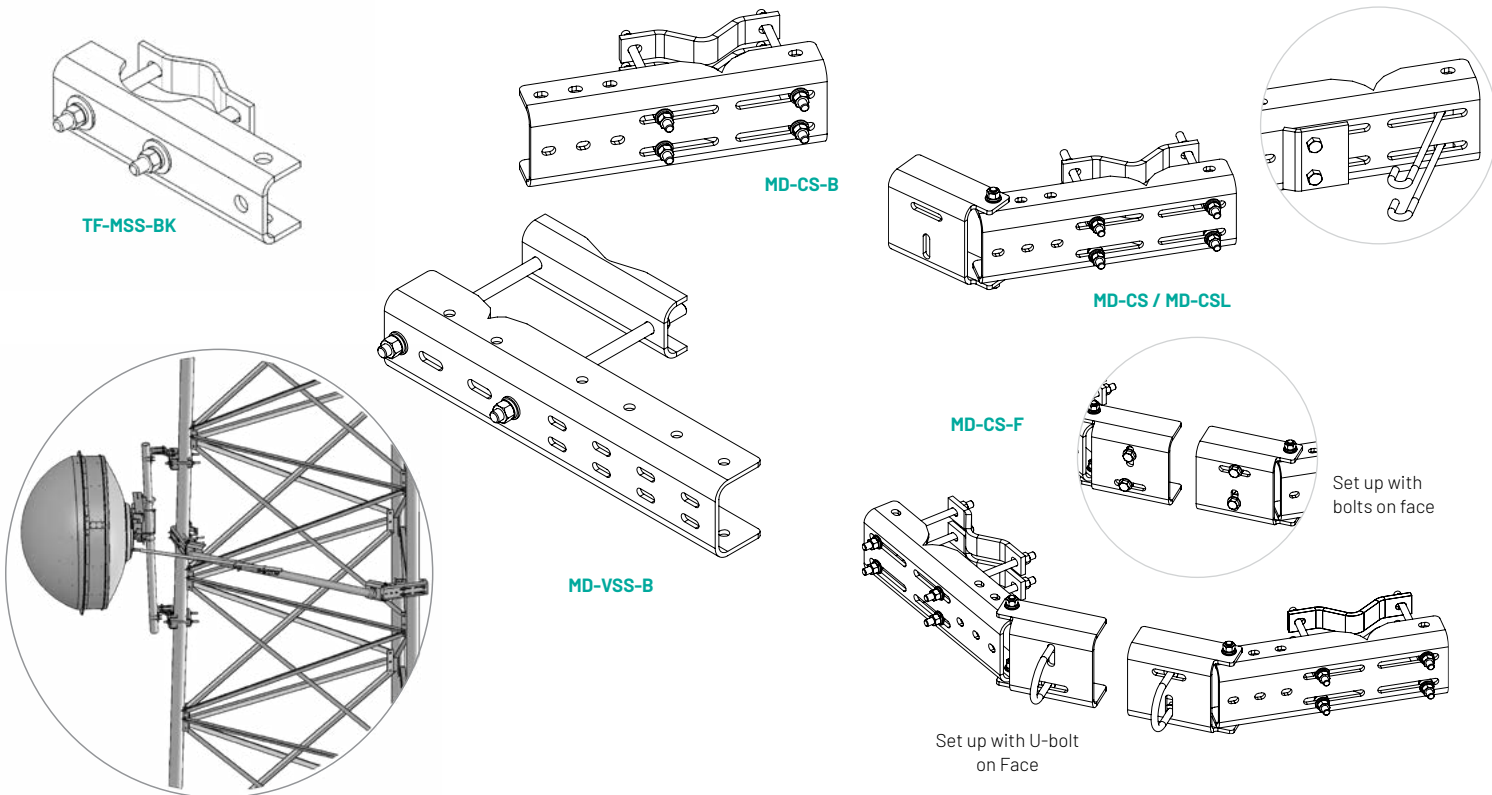
Application:	Structural strut supports for round or angle tower legs
Size:	21" (533.4 mm) channel
Design:	Universal support bracket
Feature:	Universal strut attachment
Mounts to:	Straight or tapered legs up to 16" (406.4 mm) OD, 16" (406.4 mm) angle 60°, or 12" (304.8 mm) angle 90°
Material:	Hot dip galvanized steel
Includes:	Support bracket, attachment hardware
Order Separately:	Microwave strut pipe or angle, u-bolt

MICROWAVE STRUT ATTACHMENT BRACKET

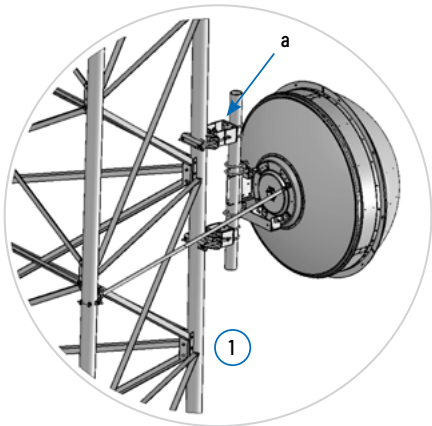
Pipe Compatibility	Material ID
For 2-3/8" (60.3 mm) OD Pipe	TF-MSS-BK2
For 3-1/2" (88.9 mm) OD Pipe	TF-MSS-BK
For 4-1/2" (114.3 mm) OD Pipe	TF-MSS-BK45
For 2-3/8"- 3-1/2" (60.3 - 88.9 mm) OD Pipe	TF-MSS-BK-U

MICROWAVE DISH STRUT SUPPORT BRACKET

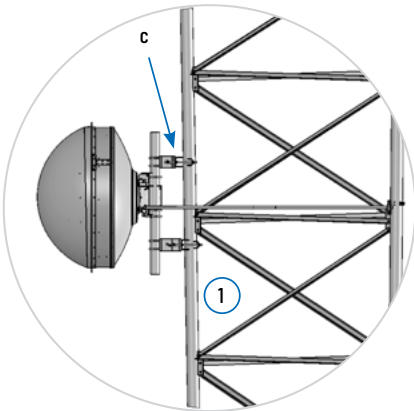
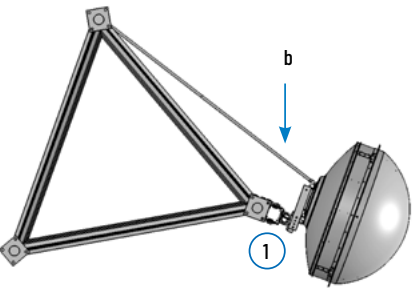
Mounting	Pipes Compatibility	Material ID
For Round or 60° Angle Legs up to 8" (203.2 mm) or 90° Angle Legs up to 6" (152.4 mm)	Universal - for Mounting up to 3-1/2" (88.9 mm) pipes	MD-CS
	Universal - for Mounting up to 4-1/2" (114.3 mm) pipes	MD-CSL
	Face Mounted (Kit of 2) - for Mounting up to 3-1/2" (88.9 mm) pipes	MD-CS-F
	Face Mounted (Kit of 2) - for Mounting up to 3-1/2" (88.9 mm) pipes	MD-CS-B
For Round or 60° Angle Legs up to 16" (406.4 mm) or 90° Angle Legs up to 12" (304.8 mm)	Universal - for Mounting up to 3-1/2" (88.9 mm) pipes	MDL-CS
	Universal - for Mounting up to 4-1/2" (114.3 mm) pipes	MDL-CSL
	Face Mounted (Kit of 2) - for Mounting up to 3-1/2" (88.9 mm) pipes	MDL-CS-F
	Face Mounted (Kit of 2) - for Mounting up to 3-1/2" (88.9 mm) pipes	MDL-CS-B
Microwave Dish Strut Vertical Support Bracket		MD-VSS-B
Tie Back Support Angle - 3/8" x 4" x 4" x 48"		MD-CSA4
Tie Back Support Angle - 3/8" x 4" x 4" x 72"		MD-CSA6
Tie Back Support Angle - 3/8" x 4" x 4" x 96"		MD-CSA8



APPLICATION GUIDE

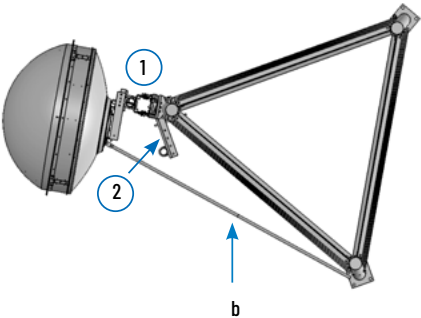
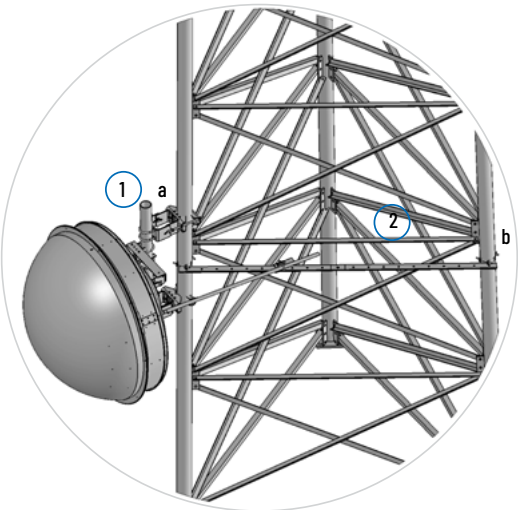


- a. Open face allows safety climb to pass through
- b. Strut returns back to tower at recommended angle
- c. Taper adjustment allows for vertical mounting solution



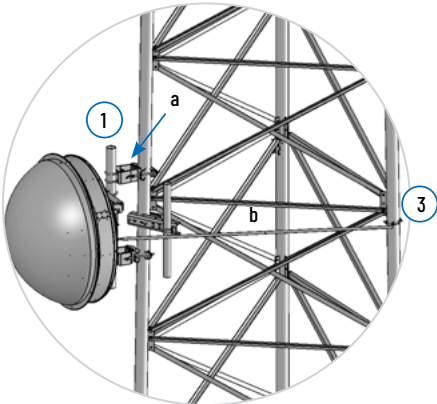
Key	Part Number	Description	Page #
1	PM-SC4-63	Universal Pipe Mount Kit With Open Face	5
2	MD-VSS	Microwave Dish Vertical Strut Support	9
3	MD-FSS	Microwave Dish Face Strut Support	6

* Shown with ANDREW antennas and supports



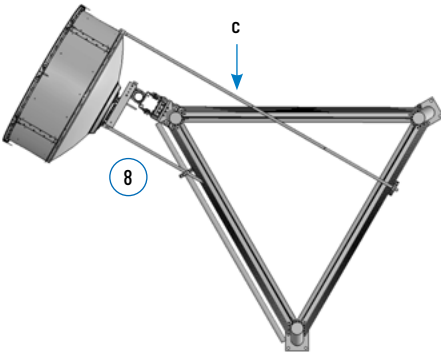
- a. Sliding taper brackets allow for 7° of non-incremental adjustment
- b. Strut returns straight back to tower

Note: Universal saddle mounts up to 8" (203.2 mm) dia. straight or taper legs

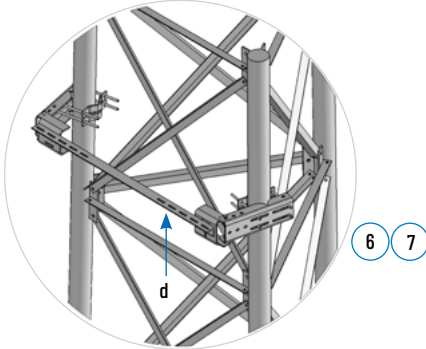
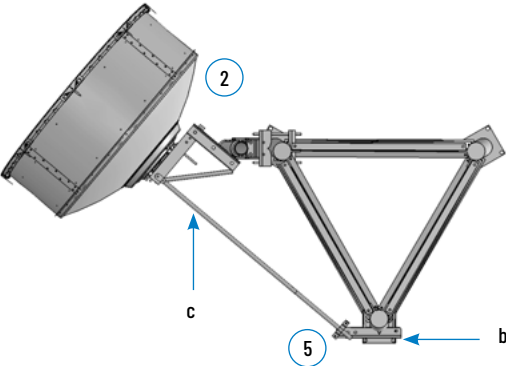
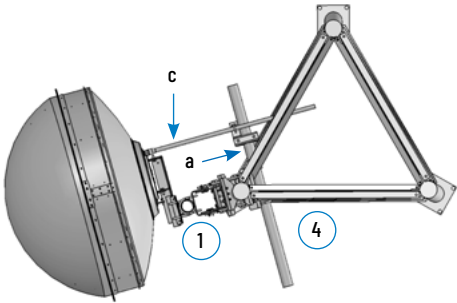


IMPORTANT TO KNOW: A competent and trained person should always inspect the safety guide on every tower before use.

APPLICATION GUIDE

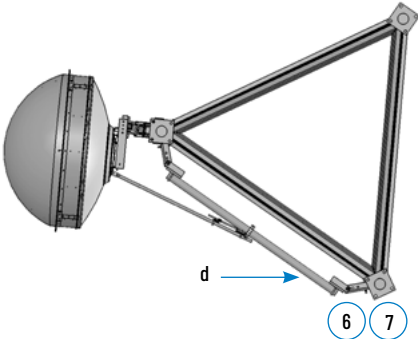
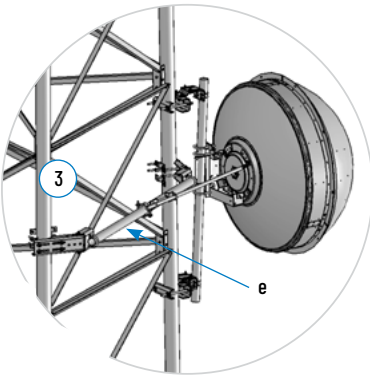


- a. MD-SS-6R Provides strut support for offset single leg attachments
- b. MD-CS-B Universal strut support for round or angle legs
- c. Strut returns straight back to tower at recommended angle
- d. MD-CS-F Will allow MD-CSA6 to attach to tower face with universal attachment brackets

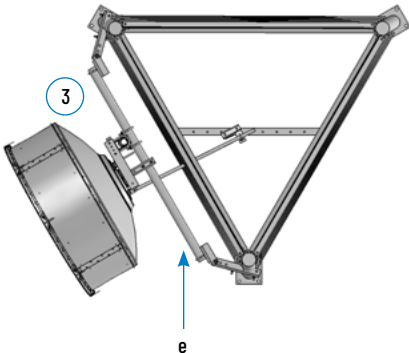


Key	Part Number	Description	Page #
1	PM-SC4-63	Universal Pipe Mount Kit With Open Face	9
2	PM-SU4-63	Universal Pipe Mount Kit	4
3	MD-CS-6R	Tower Face Mounted Dish Strut Support Kit	6
4	MD-SS-6R	Tower Leg Mounted Dish Strut Support Kit	6
5	MD-CS-B	Microwave Dish Strut Support Bracket	9
6	MD-CS-F	Tower Face Mounted Dish Strut Support Kit	9
7	MD-CSA6	Microwave Dish Strut Support Angle	9
8	TF-M3-8	Tower Face Mount with Dual Face Support	12

* Shown with ANDREW antennas and supports



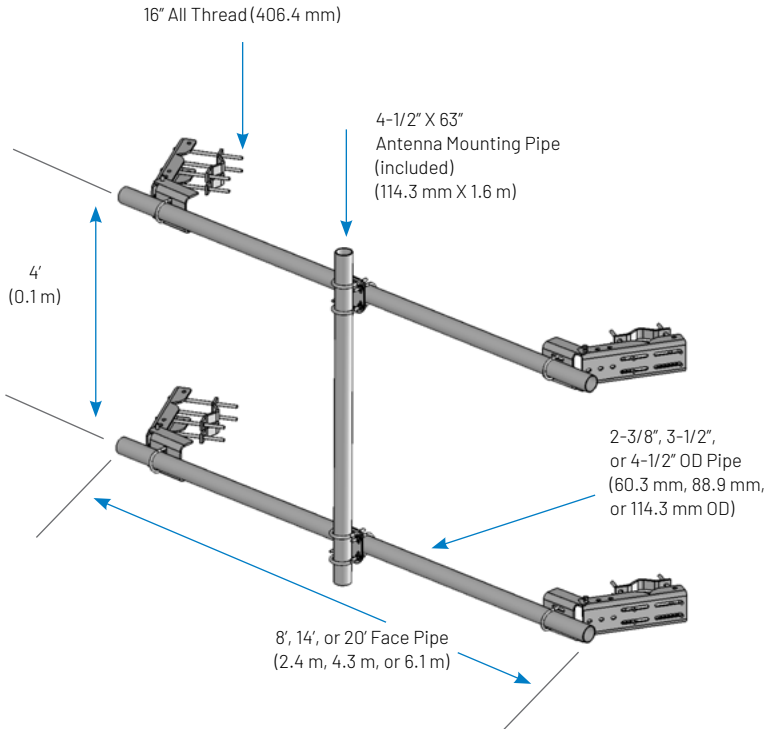
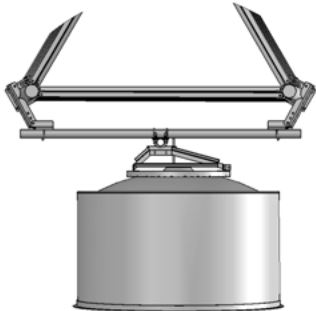
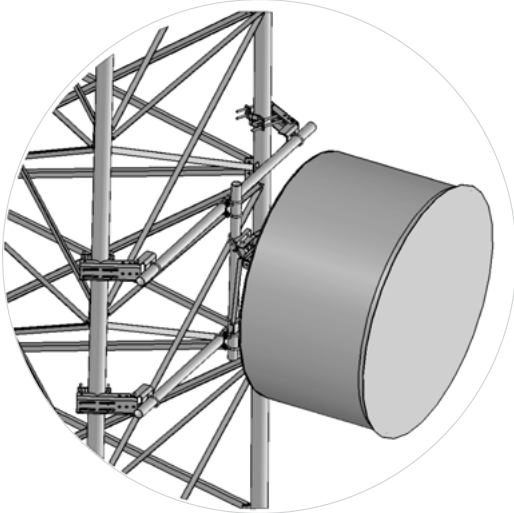
- e. MD-CS-6R Provides strut support for the tower face with universal leg attachment brackets



FACE MOUNTING SOLUTIONS

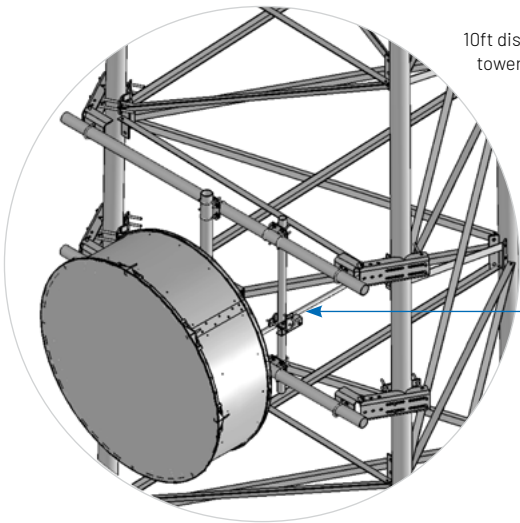
TOWER FACE MOUNTS	
Application:	Microwave antenna face mounting for round or angle, straight or tapered legs
Size:	8' (2.4 m), 14' (4.2 m), or 20' (6.1 m) face widths
Design:	Pipe with saddle mounts and adjustable clamps
Feature:	Universal taper adjustment for up to 9° of taper with 48" of separation
Mounts to:	Straight or tapered legs up to 16" (406.4 mm) OD, 16" (406.4 mm) angle 60°, or 12" (304.8 mm) angle 90°
Material:	Hot dip galvanized steel
Includes:	Universal saddle mounts, slider brackets, pipe, crossover plates, hardware
Order Separately:	Strut support kits, stand-off brackets

TOWER FACE MOUNT WITH DUAL FACE SUPPORTS			
MOUNTING	Face Support Dimensions	Pipe Included	Material ID
For Round or 60° Angle Legs up to 8" (203.2 mm) or 90° Angle Legs up to 6" (152.4 mm)	8' x 2-3/8" OD (2.4 m x 60.3 mm OD)	4-1/2" OD x 63" (114.3 mm OD x 1.6 m) Antenna Pipe	TF-M2-8
	14' x 2-3/8" OD (4.3 m x 60.3 mm OD)		TF-M2-14
	20' x 2-3/8" OD (6.1 m x 60.3 mm OD)		TF-M2-20
	8' x 3-1/2" OD (2.4 m x 88.9 mm OD)		TF-M3-8
	14' x 3-1/2" OD (4.3 m x 88.9 mm OD)		TF-M3-14
	20' x 3-1/2" OD (6.1 m x 88.9 mm OD)		TF-M3-20
	8' x 4-1/2" OD (2.4 m x 114.3 mm OD)		TF-M4-8
	14' x 4-1/2" OD (4.3 m x 114.3 mm OD)		TF-M4-14
For Round or 60° Angle Legs up to 16" (406.4 mm) or 90° Angle Legs up to 12" (304.8 mm)	8' x 2-3/8" OD (2.4 m x 60.3 mm OD)	4-1/2" OD x 63" (114.3 mm OD x 1.6 m) Antenna Pipe	TFL-M2-8
	14' x 2-3/8" OD (4.3 m x 60.3 mm OD)		TFL-M2-14
	20' x 2-3/8" OD (6.1 m x 60.3 mm OD)		TFL-M2-20
	8' x 3-1/2" OD (2.4 m x 88.9 mm OD)		TFL-M3-8
	14' x 3-1/2" OD (4.3 m x 88.9 mm OD)		TFL-M3-14
	20' x 3-1/2" OD (6.1 m x 88.9 mm OD)		TFL-M3-20
	8' x 4-1/2" OD (2.4 m x 114.3 mm OD)		TFL-M4-8
	14' x 4-1/2" OD (4.3 m x 114.3 mm OD)		TFL-M4-14



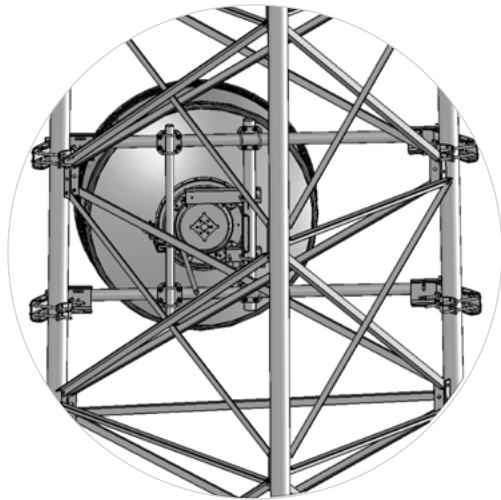
FACE MOUNTING SOLUTIONS

MICROWAVE ANTENNA DIAMETER	TOWER FACE MOUNT							
	TF-M2-8	TF-M2-14	TF-M2-20	TF-M3-8	TF-M3-14	TF-M3-20	TF-M4-8	TF-M4-14
2' (0.6 m)	X	X	X	X	X	X	X	X
4' (1.2 m)	X	X	X	X	X	X	X	X
6' (1.8 m)	X	-	-	X	X	X	X	X
8' (2.4 m)	-	-	-	X	X	X	X	X
10' (3.1 m)	-	-	-	X	X	X	X	X
12' (3.7 m)	-	-	-	X	X	-	X	X
15' (4.6 m)	-	-	-	-	-	-	X	-

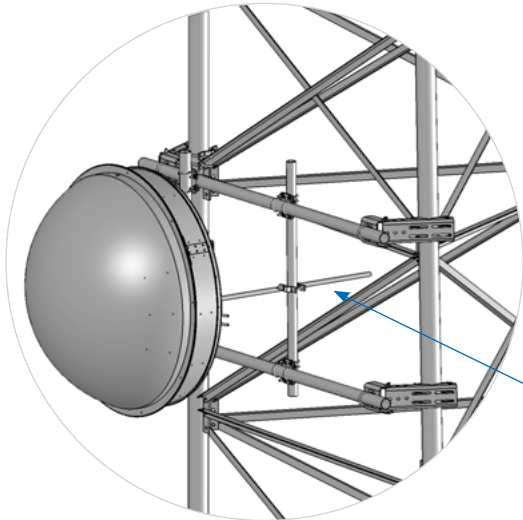


10ft dish shown on 20ft face tower using TF-M3S2-20 series mount.

See Note Below



3ft dish shown on 4ft face tower using TF-M2S-8 series mount.

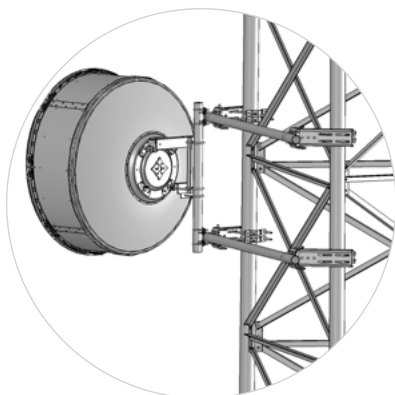


NOTE: A good practice, after the path is set, is to cut the excess strut/stiff arm 12" past the mount point, to prevent falling ice from hitting the strut and affecting the path. Treat cut edge per ASTM A123.

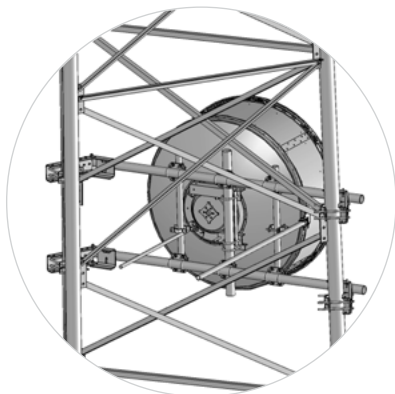
FACE MOUNTING SOLUTIONS

FACE MOUNTS WITH SINGLE STRUT OR DUAL STRUT SUPPORT

Application:	Microwave antenna face mounting for round or angle, straight or tapered legs
Size:	8', 14', or 20' (2.4 m, 4.2 m, or 6.1 m) Face widths
Design:	Pipe with saddle mounts and adjustable clamps
Feature:	Universal taper adjustment for up to 9° of taper with 48" (1.2 m) of separation
Mounts to:	Straight or tapered legs up to 16" (406.4 mm) OD, 16" (406.4 mm) angle 60°, or 12" (304.8 mm) angle 90°
Material:	Hot dip galvanized steel
Includes:	Universal saddle mounts, slider brackets, pipe, crossover plates, tieback supports, hardware
Order Separately:	Stand-off brackets



TF-M3S Series



TFL-M3S2 Series

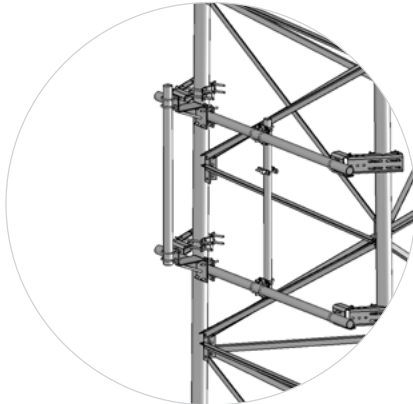
TOWER FACE MOUNTS WITH SINGLE STRUT SUPPORT

Mounting	Face Support Dimensions	Strut Support Included	Pipe Included	Material ID
For Round or 60° Angle Legs up to 8" (203.2 mm) or 90° Angle Legs up to 6" (152.4 mm)	8' x 2-3/8" OD (2.4 m x 60.3 mm OD)	One 2-3/8" x 63" (60.3 mm x 1.6 m) Strut Support	4-1/2" OD x 63" (114.3 mm OD x 1.6 m) Antenna Pipe	TF-M2S-8
	14' x 2-3/8" OD (4.3 m x 60.3 mm OD)			TF-M2S-14
	20' x 2-3/8" OD (6.1 m x 60.3 mm OD)			TF-M2S-20
	8' x 3-1/2" OD (2.4 m x 88.9 mm OD)			TF-M3S-8
	14' x 3-1/2" OD (4.3 m x 88.9 mm OD)			TF-M3S-14
	20' x 3-1/2" OD (6.1 m x 88.9 mm OD)			TF-M3S-20
	8' x 4-1/2" OD (2.4 m x 114.3 mm OD)			TF-M4S-8
For Round or 60° Angle Legs up to 16" (406.4 mm) or 90° Angle Legs up to 12" (304.8 mm)	14' x 4-1/2" OD (4.3 m x 114.3 mm OD)			TF-M4S-14
	8' x 2-3/8" OD (2.4 m x 60.3 mm OD)	One 2-3/8" x 63" (60.3 mm x 1.6 m) Strut Support	4-1/2" OD x 63" (114.3 mm OD x 1.6 m) Antenna Pipe	TFL-M2S-8
	14' x 2-3/8" OD (4.3 m x 60.3 mm OD)			TFL-M2S-14
	20' x 2-3/8" OD (6.1 m x 60.3 mm OD)			TFL-M2S-20
	8' x 3-1/2" OD (2.4 m x 88.9 mm OD)			TFL-M3S-8
	14' x 3-1/2" OD (4.3 m x 88.9 mm OD)			TFL-M3S-14
	20' x 3-1/2" OD (6.1 m x 88.9 mm OD)			TFL-M3S-20
	8' x 4-1/2" OD (2.4 m x 114.3 mm OD)			TFL-M4S-8
	14' x 4-1/2" OD (4.3 m x 114.3 mm OD)			TFL-M4S-14

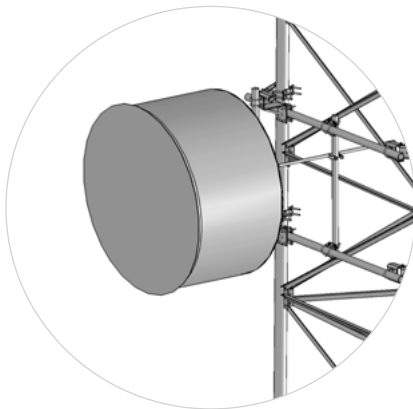
TOWER FACE MOUNTS WITH DUAL STRUT SUPPORT

Mounting	Face Support Dimensions	Strut Support Included	Pipe Included	Material ID
For Round or 60° Angle Legs up to 8" (203.2 mm) or 90° Angle Legs up to 6" (152.4 mm)	8' x 2-3/8" OD (2.4 m x 60.3 mm OD)	Two 2-3/8" x 63" (60.3 mm x 1.6 m) Strut Support	4-1/2" OD x 63" (114.3 mm OD x 1.6 m) Antenna Pipe	TF-M2S2-8
	14' x 2-3/8" OD (4.3 m x 60.3 mm OD)			TF-M2S2-14
	20' x 2-3/8" OD (6.1 m x 60.3 mm OD)			TF-M2S2-20
	8' x 3-1/2" OD (2.4 m x 88.9 mm OD)			TF-M3S2-8
	14' x 3-1/2" OD (4.3 m x 88.9 mm OD)			TF-M3S2-14
	20' x 3-1/2" OD (6.1 m x 88.9 mm OD)			TF-M3S2-20
	8' x 4-1/2" OD (2.4 m x 114.3 mm OD)			TF-M4S2-8
For Round or 60° Angle Legs up to 16" (406.4 mm) or 90° Angle Legs up to 12" (304.8 mm)	14' x 4-1/2" OD (4.3 m x 114.3 mm OD)			TF-M4S2-14
	8' x 2-3/8" OD (2.4 m x 60.3 mm OD)	Two 2-3/8" x 63" (60.3 mm x 1.6 m) Strut Support	4-1/2" OD x 63" (114.3 mm OD x 1.6 m) Antenna Pipe	TFL-M2S2-8
	14' x 2-3/8" OD (4.3 m x 60.3 mm OD)			TFL-M2S2-14
	20' x 2-3/8" OD (6.1 m x 60.3 mm OD)			TFL-M2S2-20
	8' x 3-1/2" OD (2.4 m x 88.9 mm OD)			TFL-M3S2-8
	14' x 3-1/2" OD (4.3 m x 88.9 mm OD)			TFL-M3S2-14
	20' x 3-1/2" OD (6.1 m x 88.9 mm OD)			TFL-M3S2-20
	8' x 4-1/2" OD (2.4 m x 114.3 mm OD)			TFL-M4S2-8
	14' x 4-1/2" OD (4.3 m x 114.3 mm OD)			TFL-M4S2-14

FACE MOUNTING SOLUTIONS



TF-ML45 Series



TF-ML35 Series

TOWER FACE MOUNTS WITH DUAL FACE SUPPORTS & 14" STANDOFF

Mounting	Face Support Dimensions	Standoff	Pipe Included	Material ID
For Round or 60° Angle Legs up to 8" (203.2 mm) or 90° Angle Legs up to 6" (152.4 mm)	8' x 2-3/8" OD (2.4 m x 60.3 mm OD)	14" (355.6 mm) Stand-off	4-1/2" OD x 63" (114.3 mm OD x 1.6 m) Antenna Pipe	TF-ML2-8
	14' x 2-3/8" OD (4.3 m x 60.3 mm OD)			TF-ML2-14
	20' x 2-3/8" OD (6.1 m x 60.3 mm OD)			TF-ML2-20
	8' x 3-1/2" OD (2.4 m x 88.9 mm OD)			TF-ML3-8
	14' x 3-1/2" OD (4.3 m x 88.9 mm OD)			TF-ML3-14
	20' x 3-1/2" OD (6.1 m x 88.9 mm OD)			TF-ML3-20
	8' x 4-1/2" OD (2.4 m x 114.3 mm OD)			TF-ML4-8
	14' x 4-1/2" OD (4.3 m x 114.3 mm OD)			TF-ML4-14
For Round or 60° Angle Legs up to 16" (406.4 mm) or 90° Angle Legs up to 12" (304.8 mm)	8' x 2-3/8" OD (2.4 m x 60.3 mm OD)	14" (355.6 mm) Stand-off	4-1/2" OD x 63" (114.3 mm OD x 1.6 m) Antenna Pipe	TFL-ML2-8
	14' x 2-3/8" OD (4.3 m x 60.3 mm OD)			TFL-ML2-14
	20' x 2-3/8" OD (6.1 m x 60.3 mm OD)			TFL-ML2-20
	8' x 3-1/2" OD (2.4 m x 88.9 mm OD)			TFL-ML3-8
	14' x 3-1/2" OD (4.3 m x 88.9 mm OD)			TFL-ML3-14
	20' x 3-1/2" OD (6.1 m x 88.9 mm OD)			TFL-ML3-20
	8' x 4-1/2" OD (2.4 m x 114.3 mm OD)			TFL-ML4-8
	14' x 4-1/2" OD (4.3 m x 114.3 mm OD)			TFL-ML4-14

TOWER FACE MOUNTS WITH DUAL FACE SUPPORTS, 14" STANDOFF, & SINGLE STRUT SUPPORT

Mounting	Face Support Dimensions	Strut Support Included	Standoff	Pipe Included	Material ID
For Round or 60° Angle Legs up to 8" (203.2 mm) or 90° Angle Legs up to 6" (152.4 mm)	8' x 2-3/8" OD (2.4 m x 60.3 mm OD)	One 2-3/8" x 63" (60.3 mm x 1.6 m) Strut Support	14" (355.6 mm) Stand-off	4-1/2" OD x 63" (114.3 mm OD x 1.6 m) Antenna Pipe	TF-ML2S-8
	14' x 2-3/8" OD (4.3 m x 60.3 mm OD)				TF-ML2S-14
	20' x 2-3/8" OD (6.1 m x 60.3 mm OD)				TF-ML2S-20
	8' x 3-1/2" OD (2.4 m x 88.9 mm OD)				TF-ML3S-8
	14' x 3-1/2" OD (4.3 m x 88.9 mm OD)				TF-ML3S-14
	20' x 3-1/2" OD (6.1 m x 88.9 mm OD)				TF-ML3S-20
	8' x 4-1/2" OD (2.4 m x 114.3 mm OD)				TF-ML4S-8
	14' x 4-1/2" OD (4.3 m x 114.3 mm OD)				TF-ML4S-14
For Round or 60° Angle Legs up to 16" (406.4 mm) or 90° Angle Legs up to 12" (304.8 mm)	8' x 2-3/8" OD (2.4 m x 60.3 mm OD)	One 2-3/8" x 63" (60.3 mm x 1.6 m) Strut Support	14" (355.6 mm) Stand-off	4-1/2" OD x 63" (114.3 mm OD x 1.6 m) Antenna Pipe	TFL-ML2S-8
	14' x 2-3/8" OD (4.3 m x 60.3 mm OD)				TFL-ML2S-14
	20' x 2-3/8" OD (6.1 m x 60.3 mm OD)				TFL-ML2S-20
	8' x 3-1/2" OD (2.4 m x 88.9 mm OD)				TFL-ML3S-8
	14' x 3-1/2" OD (4.3 m x 88.9 mm OD)				TFL-ML3S-14
	20' x 3-1/2" OD (6.1 m x 88.9 mm OD)				TFL-ML3S-20
	8' x 4-1/2" OD (2.4 m x 114.3 mm OD)				TFL-ML4S-8
	14' x 4-1/2" OD (4.3 m x 114.3 mm OD)				TFL-ML4S-14

FACE MOUNTING SOLUTIONS

TOWER FACE MOUNTS WITH DUAL FACE SUPPORTS , 14" STANDOFF, & DUAL STRUT SUPPORT

Mounting	Face Support Dimensions	Strut Support Included	Standoff	Pipe Included	Material ID
For Round or 60° Angle Legs up to 8" (203.2 mm) or 90° Angle Legs up to 6" (152.4 mm)	8' x 2-3/8" OD (2.4 m x 60.3 mm OD)	Two 2-3/8" x 63" (60.3 mm x 1.6 m) Strut Supports	14" (355.6 mm) Stand-off	4-1/2" OD x 63" (114.3 mm OD x 1.6 m) Antenna Pipe	TF-ML2S2-8
	14' x 2-3/8" OD (4.3 m x 60.3 mm OD)				TF-ML2S2-14
	20' x 2-3/8" OD (6.1 m x 60.3 mm OD)				TF-ML2S2-20
	8' x 3-1/2" OD (2.4 m x 88.9 mm OD)				TF-ML3S2-8
	14' x 3-1/2" OD (4.3 m x 88.9 mm OD)				TF-ML3S2-14
	20' x 3-1/2" OD (6.1 m x 88.9 mm OD)				TF-ML3S2-20
	8' x 4-1/2" OD (2.4 m x 114.3 mm OD)				TF-ML4S2-8
	14' x 4-1/2" OD (4.3 m x 114.3 mm OD)				TF-ML4S2-14
For Round or 60° Angle Legs up to 16" (406.4 mm) or 90° Angle Legs up to 12" (304.8 mm)	8' x 2-3/8" OD (2.4 m x 60.3 mm OD)	Two 2-3/8" x 63" (60.3 mm x 1.6 m) Strut Supports	14" (355.6 mm) Stand-off	4-1/2" OD x 63" (114.3 mm OD x 1.6 m) Antenna Pipe	TFL-ML2S2-8
	14' x 2-3/8" OD (4.3 m x 60.3 mm OD)				TFL-ML2S2-14
	20' x 2-3/8" OD (6.1 m x 60.3 mm OD)				TFL-ML2S2-20
	8' x 3-1/2" OD (2.4 m x 88.9 mm OD)				TFL-ML3S2-8
	14' x 3-1/2" OD (4.3 m x 88.9 mm OD)				TFL-ML3S2-14
	20' x 3-1/2" OD (6.1 m x 88.9 mm OD)				TFL-ML3S2-20
	8' x 4-1/2" OD (2.4 m x 114.3 mm OD)				TFL-ML4S2-8
	14' x 4-1/2" OD (4.3 m x 114.3 mm OD)				TFL-ML4S2-14

TOWER FACE MOUNT STRUT SUPPORT KITS

Application:	Support for mounting strut of TF-M series face mount
Size:	Three versions
Design:	Pipe with crossover plates
Feature:	Can be adjusted to mount anywhere on tower face mount
Mounts to:	Tower face mount kits
Material:	Hot dip galvanized steel
Includes:	Plates, strut support, hardware, pipe
Order Separately:	Tower face mount kit

TOWER FACE MOUNT STAND-OFF BRACKET

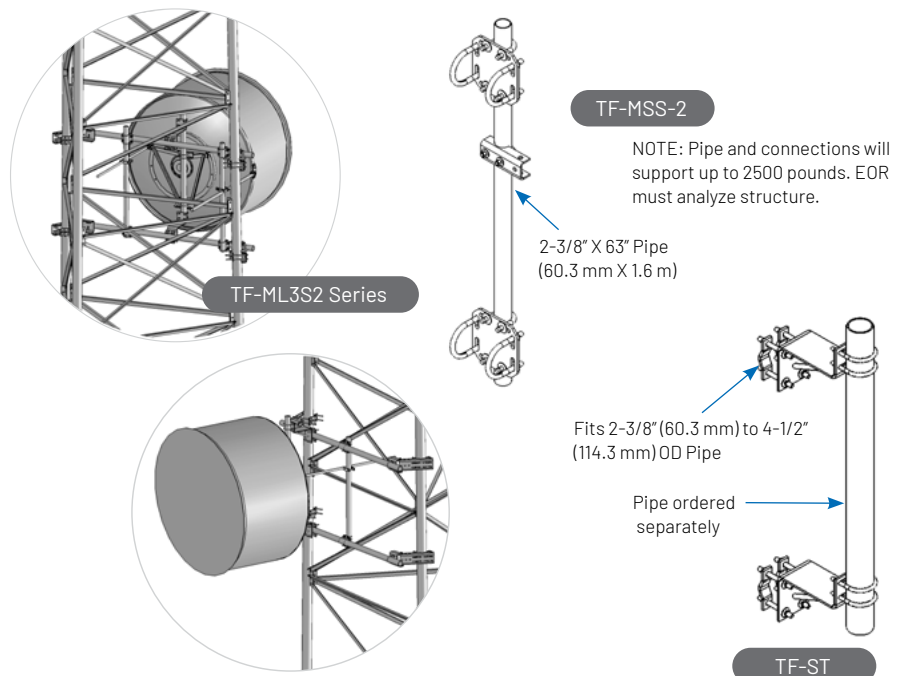
Application:	Support for standing microwave antenna off of TF-M series face mount
Size:	4-1/2" (114.3 mm) OD
Design:	4-1/2" (114.3 mm) OD pipe mount stand-off
Feature:	14" (355.6 mm) stand-off
Mounts to:	Tower face mount kits
Material:	Hot dip galvanized steel
Includes:	Stand-off, attachment hardware
Order Separately:	Tower face mount kit

TOWER FACE MOUNT STAND-OFF BRACKET

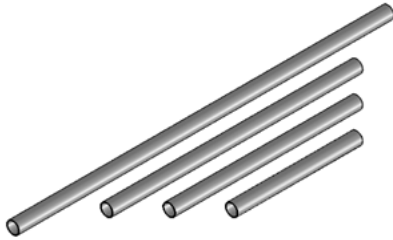
Mounting	Stand-off	Material ID
2-3/8" (60.3 mm) to 4-1/2" (114.3 mm) OD Pipe	14" (355.6 mm) Stand-off	TF-ST

TOWER FACE MOUNT STRUT SUPPORT KITS

Mounting	Pipe Included	Material ID
2-3/8" OD x 2-3/8" OD (60.3 mm x 60.3 mm)	One 2-3/8" x 63" (60.3 mm x 1.6 m) Pipe	TF-MSS-2
For Round or 60° Angle Legs up to 16" (406.4 mm) or 90° Angle Legs up to 12" (304.8 mm)		TF-MSS-3
Microwave Dish Strut Vertical Support Bracket		TF-MSS-4



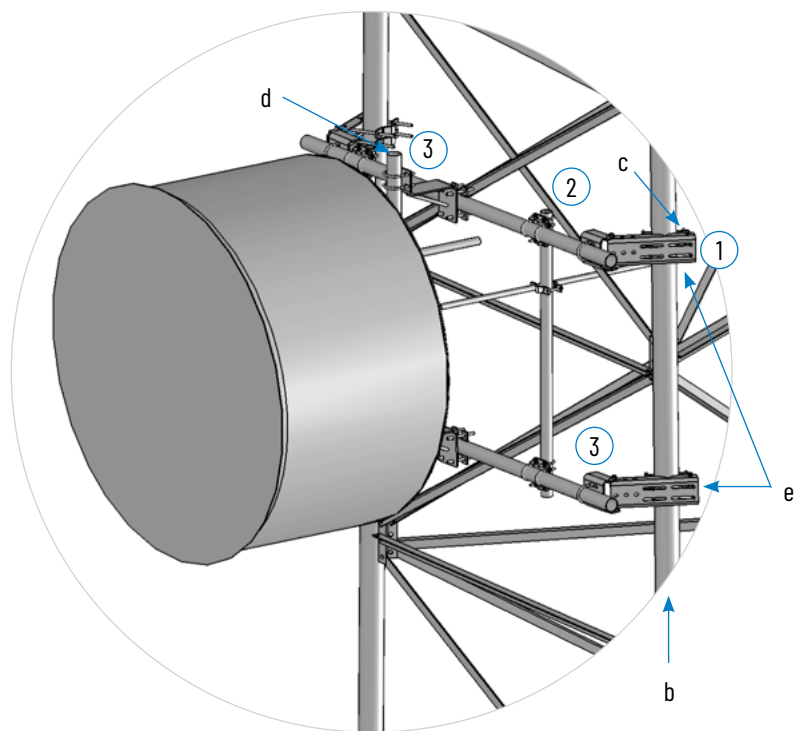
FACE MOUNTING SOLUTIONS



PIPES				
Description	Pipe OD	Pipe Length	Material Thickness	Material ID
Galvanized Pipe Grade A500C - 46 KSI	2-3/8"	24"	.120"	MT-648
		36"	.120"	MT-649
		48"	.120"	MT-650
		63"	.120"	MT-650-63
		96"	.154"	MT651096154
		96"	.218"	MT651096218
		126"	.154"	MT651126154
		126"	.218"	MT651126218
		150"	.154"	MT651150154
		150"	.218"	MT651150218
		174"	.218"	MT651174218
	2-7/8"	48"	.203"	MT-546-48
		84"	.120"	MT546084120
		84"	.203"	MT54684
		96"	.120"	MT54696120
		96"	.203"	MT54696
		96"	.276"	MT546096276
		126"	.120"	MT546126120
		126"	.203"	MT-546-126
		126"	.276"	MT546126276
		150"	.120"	MT546150120
		150"	.203"	MT-546-150
		150"	.276"	MT546150276
		174"	.120"	MT546174120
		174"	.203"	MT-546-174
		174"	.276"	MT546174276
	3-1/2"	72"	.165"	MT54772
		84"	.165"	MT54784
		96"	.165"	MT54796
		126"	.165"	MT-547-126
		150"	.165"	MT21601
		160"	.165"	MT130165
		174"	.165"	MT-547-174
	4-1/2"	48"	.188"	MT-653
		63"	.237"	MT-653-63
		96"	.188"	MT-654-96
		126"	.188"	MT-539
		150"	.188"	MT-654-150
		174"	.237"	MTC987205

NOTE: The length of pipe must be considered for the type of dish used and the loads from the dish and or the strut/stiff arm attached.

APPLICATION GUIDE

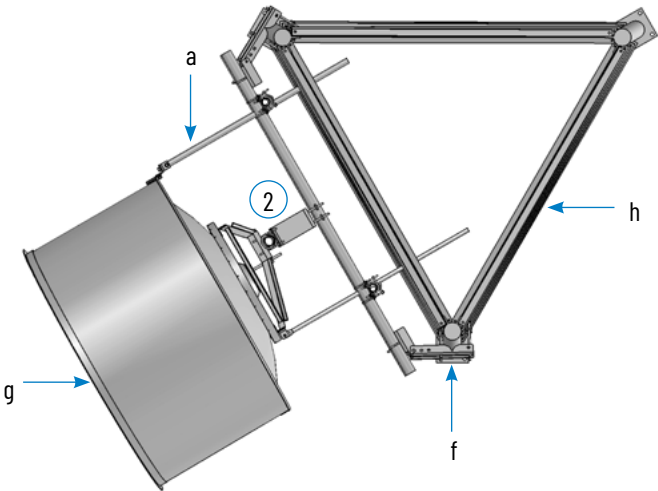


- a. Strut returns back to tower at recommended angle
 - b. Tapered leg
 - c. Channel supports adjust for inclination of tower leg taper
 - d. True vertical antenna support
 - e. Dual face support allows four point connection to structure
- Note: Optional TF-ST allows greater work space and elliptical path

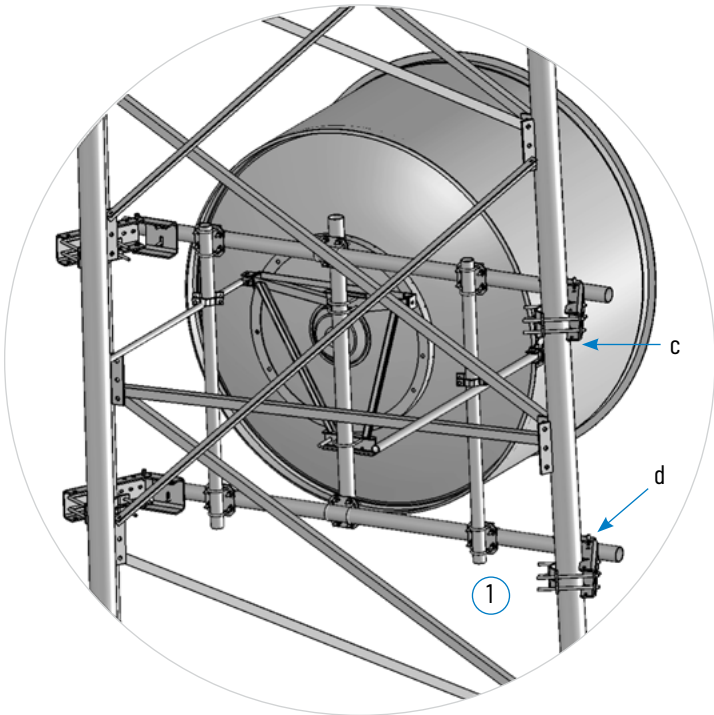
Key	Part Number	Description	Page #
1	TF-M3-14	Tower Face Mount With 14' (4.2 m) Face Pipes 3-1/2"OD (88.9 mm)	12
2	TF-ST	Tower Face Mount Stand-off Bracket	16
3	TF-MSS-3	Tower Face Mount Strut Support Kit 2-3/8" OD x 3-1/2" OD (60.3 mm x 88.9 mm)	16

* Shown with ANDREW antennas and supports

- f. 6" (152.4 mm) 60° Angle tower leg
- g. 8' (2.4 m) HSX8 series antenna and supports
- h. 10' (3.0 m) Tower face



APPLICATION GUIDE

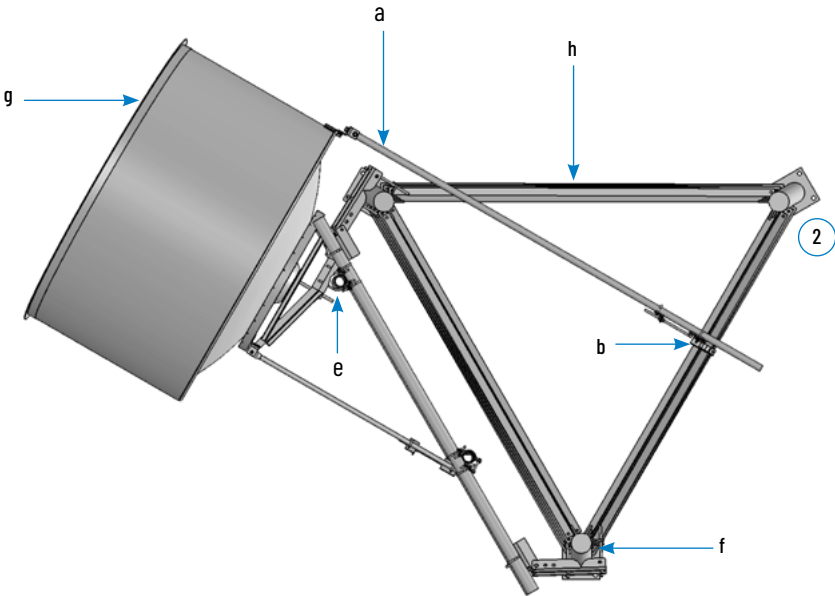


- a. Strut returns back to tower at recommended angle
- b. Optional strut attachment back to tower leg at recommended angle
- c. Strut attachment allows for vertical adjustment
- d. Universal saddle mounts up to up to 16" (406.4 mm) OD straight or tapered legs
- e. Mount can be positioned along horizontal support for azimuth adjustment

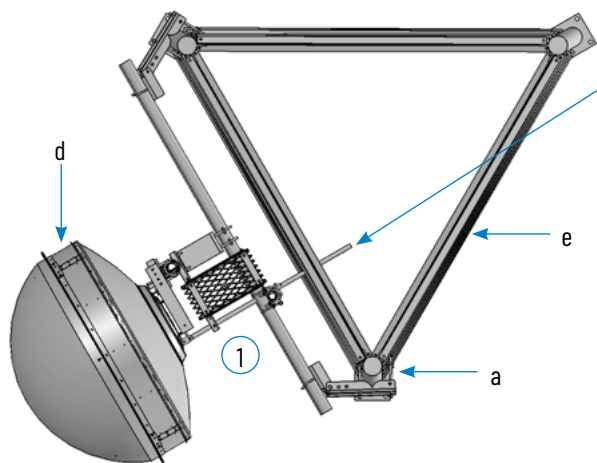
Key	Part Number	Description	Page #
1	TFL-M3S2-14	Tower Face Mount Kit With 14' (4.2 m) Face Pipes 3-1/2"OD (88.9 mm) Kit Includes Two TF-MSS-3's	14
2	MD-CS-B	Microwave Dish Strut Support Bracket	9

* Shown with ANDREW antennas and supports

- f. 10" (254 mm) 60° Angle tapered tower leg
- g. 10' (3 m) HP10 series antenna and supports
- h. 12' (3.6 m) Tower face

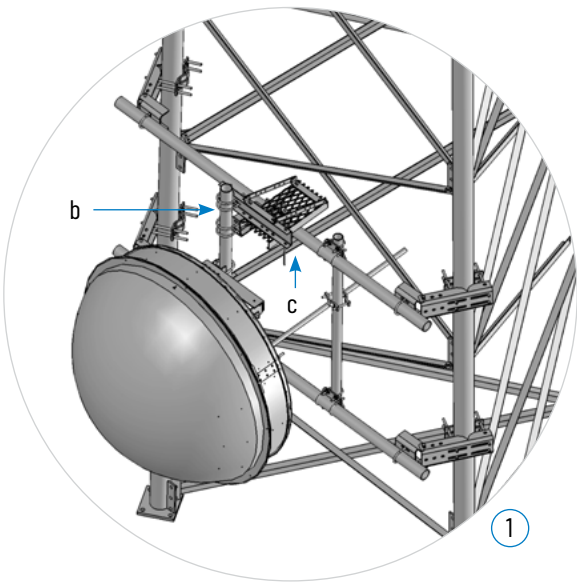


APPLICATION GUIDE



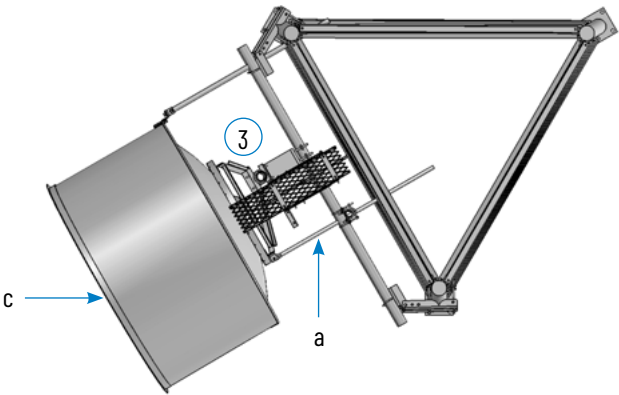
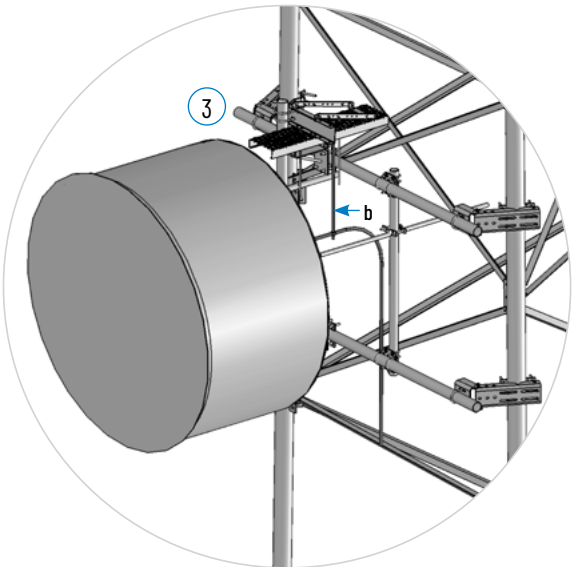
NOTE: A good practice, after the path is set, is to cut the excess strut/stiff arm 12" past the mount point, to prevent falling ice from hitting the strut and affecting the path. Treat cut edge per ASTM A123.

- a. 6" (152.4 mm) 60° Tapered tower leg
- b. Mounts to existing 4-1/2" OD (114.3 mm) vertical pipe mount
- c. Offers multiple attachment points on grating
- d. 3' (1.0 m) Dish
- e. 6' (1.8 m) Tower face



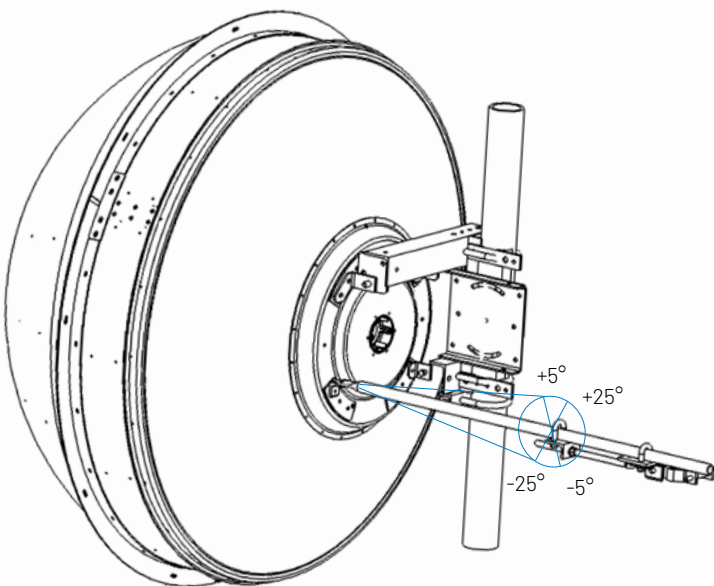
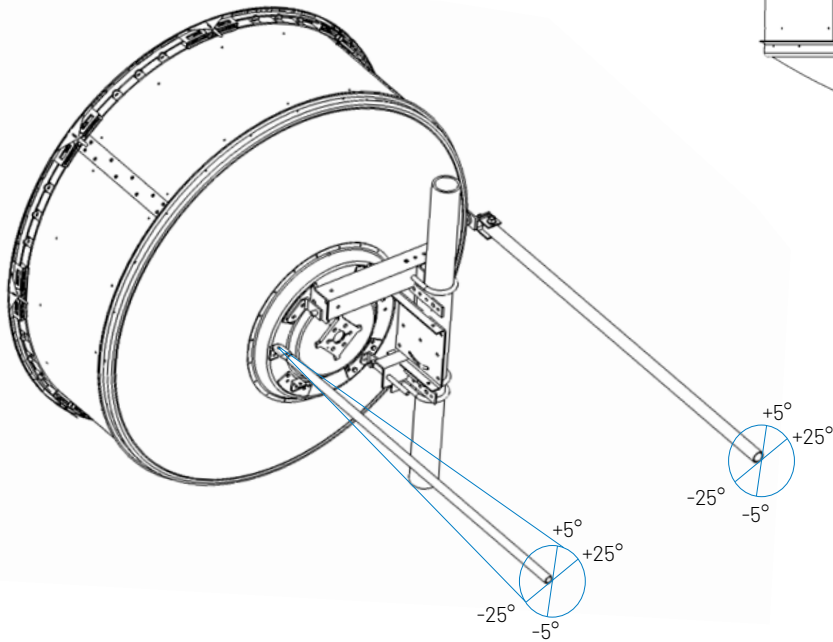
Key	Part Number	Description	Page #
1	MD-IS2	Microwave Dish Cable Ice Shield	22, 44
2	TF-M2S-8	Tower Face Mount Kit With 8' (2.4 m) Face Pipes 2-3/8" OD (60.3 mm) Kit Includes One TF-MSS-2	14
3	MD-IS4	Microwave Dish Cable Ice Shield	22, 44

* Shown with ANDREW antennas and supports

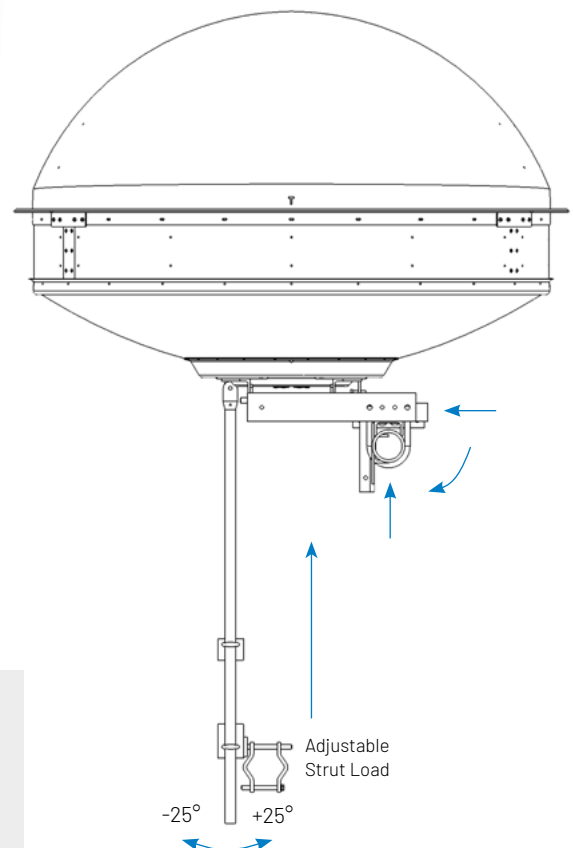
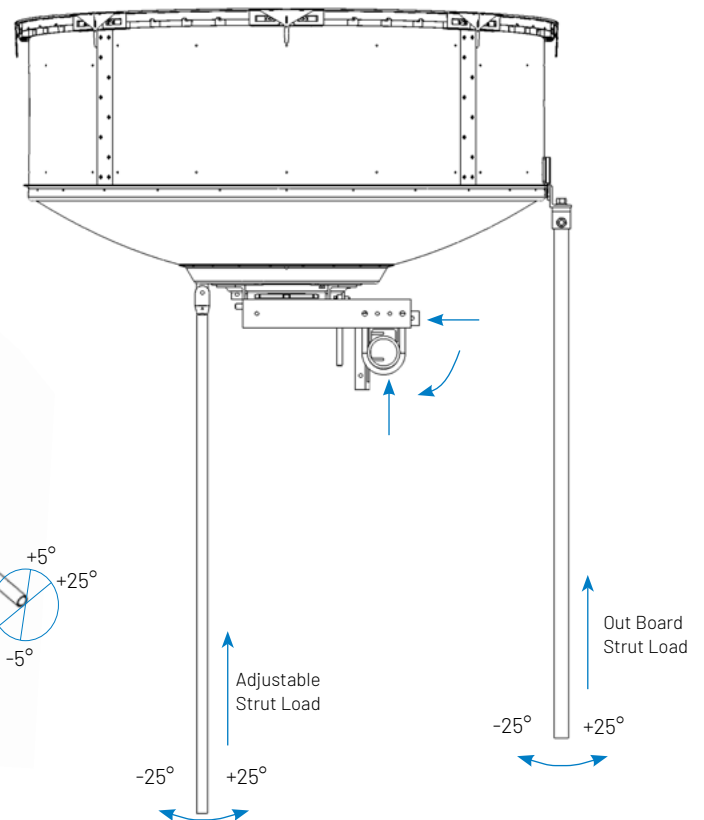


- a. Grating can be mounted at any azimuth to protect and follow elliptical waveguide
- b. Threaded support rod for elliptical waveguide
- c. 10' (3.0 m) HP series dish
- d. 6" (152.4 mm) 60° Tapered tower leg

APPLICATION GUIDE



A 4' dish strut/stiff arm can see in survival winds up to 600 lbs. of load, and in working load wind conditions the mount cannot flex or deflect more than 0.1". A six foot dish strut/stiff arm can see in survival winds up to 1400 lbs of load, and in working load wind conditions the mount cannot flex or deflect more than 0.1". In addition this arm must have a horizontal angle of less than 25° and less than 5° in the vertical direction."

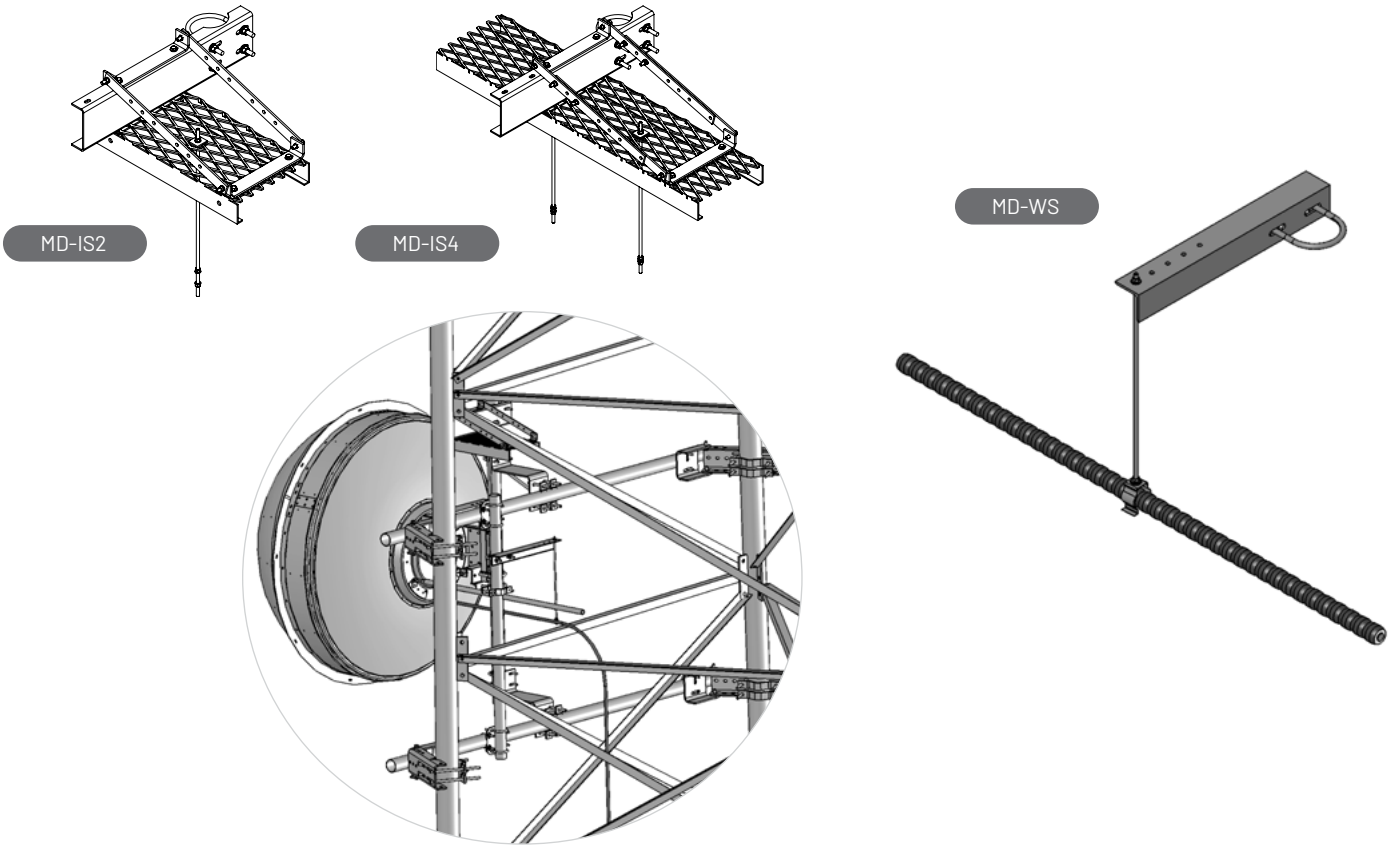


APPLICATION GUIDE

MICROWAVE DISH WAVEGUIDE SHIELDS	
Application:	Waveguide protection for behind micro-wave antenna
Size:	Three versions (see table)
Design:	Support and protection for waveguide
Feature:	Protects waveguide from falling debris
Mounts to:	4-1/2" (114.3 mm) OD pipe
Material:	Hot dip galvanized steel
Includes:	Ice shield and all attachment hardware
Order Separately:	Pipe mount

MICROWAVE DISH WAVEGUIDE SHIELDS	
Description	Material ID
12" x 24" (304.8 mm x 610 mm) Shield	MD-IS2
12" x 48" (304.8 mm x 1.2 m) Shield	MD-IS4
24" (610 mm) Angle	MD-WS

Waveguide shields are recommended to keep ice and other falling debris from damaging critical components behind the MW antenna.



NOTE: It is recommended that the EW line is supported every three feet in the horizontal and within 12" of the connector so there is no stress on the feed horn.



MONOPOLE MOUNTS

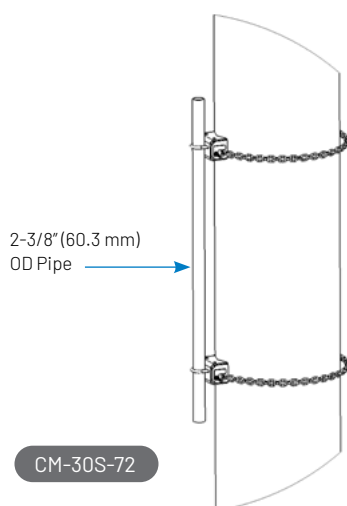
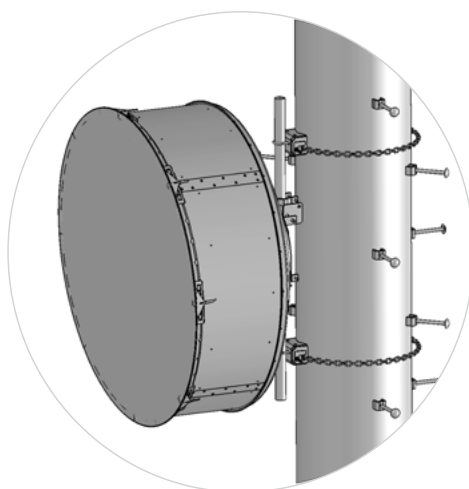
- Low-profile chain mounts
- Light duty chain mounts
- Heavy duty chain mounts
- 3-Sector Dual Pipe Mount Kits

FOR OUR FULL MONOPOLE PRODUCT PORTFOLIO, PLEASE VISIT
OUR MONOPOLE MOUNTS SITE OR FOLLOW THE QR CODE:
MONOPOLE MOUNTS | ANDREW



LOW-PROFILE CHAIN MOUNTS

LOW-PROFILE CHAIN MOUNTS	
Application:	Chain mount solution for mounting antennas or monopoles
Size:	2-3/8" (60.3 mm) OD pipe mounts
Design:	Single antenna chain mounts
Feature:	Universal, low-profile mount
Mounts to:	8" to 60" (203.2 mm to 1524 mm) OD
Material:	Hot dip galvanized steel
Includes:	See description



LOW-PROFILE CHAIN MOUNTS				
Mounting	Chain	Pipes Included	Stand-off	Material ID
8" to 30" (203.2 mm to 711.2 mm) OD 25" to 94.2" (635 mm to 2393 mm) Circumference	8' (2.4 m) Chain	None	N/A	CM-30S-B
		2-3/8" OD x 72" (60.3 mm OD x 1.8 m)		CM-30S-72
		2-3/8" OD x 96" (60.3 mm OD x 2.4 m)		CM-30S-96
		None	14" (355.6 mm)	CML-30S-B
		2-3/8" OD x 72" (60.3 mm OD x 1.8 m)		CML-30S-72
		2-3/8" OD x 96" (60.3 mm OD x 2.4 m)		CML-30S-96
8" to 60" (203.2 mm to 1524 mm) OD 25" to 188" (635 mm to 4785 mm) Circumference	16' (4.9 m) Chain	None	N/A	CM-60S-B
		2-3/8" OD x 72" (60.3 mm OD x 1.8 m)		CM-60S-72
		2-3/8" OD x 96" (60.3 mm OD x 2.4 m)		CM-60S-96
		None	14" (355.6 mm)	CML-60S-B
		2-3/8" OD x 72" (60.3 mm OD x 1.8 m)		CML-60S-72
		2-3/8" OD x 96" (60.3 mm OD x 2.4 m)		CML-60S-96

Man Rating: 250 lb vertical man load at 15 mph (BWS)

Wind Rating*: 120 mph (BWS) 1/2" radial ice at 100' AGL per latest revision of ANSI/TIA-222

* Typical installation of one 3' (1.0 m) microwave antenna per sector

NOTE 1: Low Profile Chain Mounts can be used with microwave antennas 3' and smaller.

NOTE 2: To avoid future maintenance issues, excess chain should be removed after final installation.

NOTE: Monopoles can sway due to wind loading. The amount of sway is dependent on the monopole design, antennas, and the wind speed. A typical 100 ft. monopole can sway 2-4 ft. during 90 mph wind conditions.

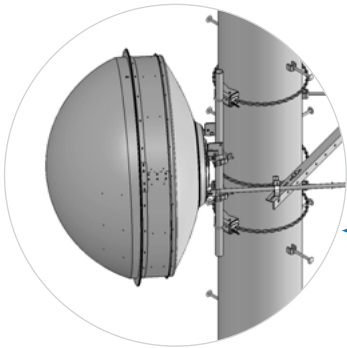
LOW-PROFILE CHAIN MOUNTS

LIGHT DUTY CHAIN MOUNTS

Application:	Chain mount solution for mounting antennas on monopoles
Size:	4-1/2" (114.3 mm) OD pipe mounts
Design:	Single antenna mount
Feature:	Single chain support
Mounts to:	8" to 60" (203.2 mm to 1.5 m) OD
Material:	Hot dip galvanized steel
Includes:	Pipe mounts and chains
Order Separately:	Strut/stiff arm and pipe mounts as needed

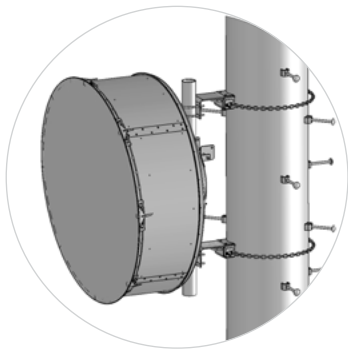
LIGHT DUTY CHAIN MOUNTS

Mounting	Chain	Pipes Included	Stand-off	Material ID
8" to 30" (203.2 mm to 711.2 mm) OD 25" to 94.2" (635 mm to 2393 mm) Circumference	8' (2.4 m) Chain	None	N/A	CM-L30-B
		4-1/2" OD x 63" (114.3 mm OD x 1.6 m) 90.64 (41.1) Pipe Mount		CM-L30-63
		None	14" (355.6 mm)	CML-L30-B
		4-1/2" OD x 63" (114.3 mm OD x 1.6 m) 90.64 (41.1) Pipe Mount		CML-L30-63
8" to 60" (203.2 mm to 1524 mm) OD 25" to 188" (635 mm to 4785 mm) Circumference	16' (4.9 m) Chain	None	N/A	CM-L60-B
		4-1/2" OD x 63" (114.3 mm OD x 1.6 m) 90.64 (41.1) Pipe Mount		CM-L60-63
		None	14" (355.6 mm)	CML-L60-B
		4-1/2" OD x 63" (114.3 mm OD x 1.6 m) 90.64 (41.1) Pipe Mount		CML-L60-63

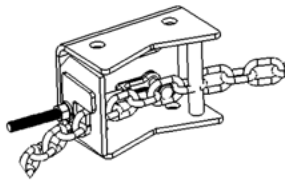


NOTE: Shown with 3' (1.0 m) microwave antenna

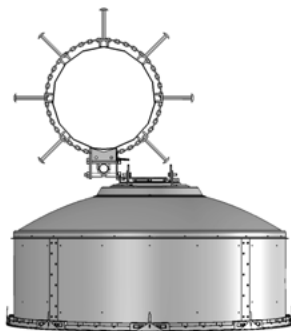
CM-L30-63 with CM-SL30



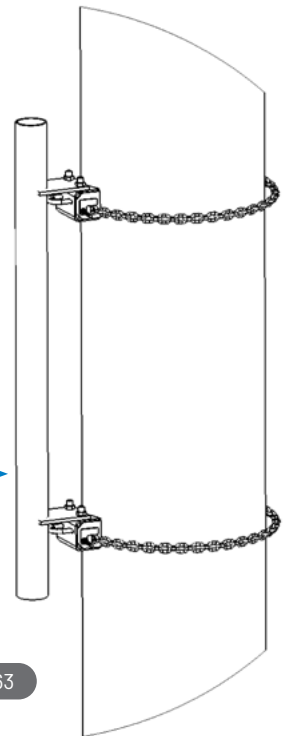
CML-L30-63



NOTE: Antenna should mount with load plane of dish as shown below



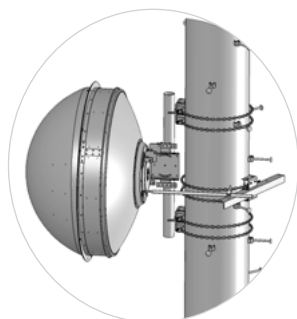
4-1/2" (114.3 mm) OD Pipe



CM-L30-63

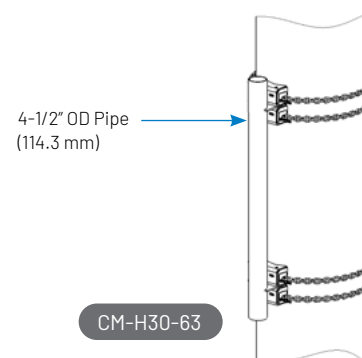
HEAVY DUTY CHAIN MOUNTS

HEAVY DUTY CHAIN MOUNTS	
Application:	Chain mount solution for mounting antennas on monopoles
Size:	4-1/2" (114.3 mm) OD pipe mounts
Design:	Single antenna mount
Feature:	Double chain support
Mounts to:	8" to 60" (203.2 mm to 1524 mm) OD
Material:	Hot dip galvanized steel
Includes:	Pipe mounts and chains
Order Separately:	Strut/stiff arm and pipe mounts as needed

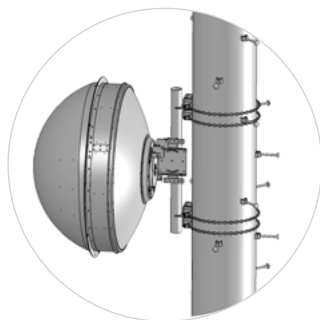


NOTE: Use Heavy Duty Chain Mounts for 3' (1 m) and larger microwave antennas

Mounting	Chain	Pipes Included	Material ID
8" to 30" (203.2 mm to 711.2 mm) OD 25" to 94.2" (635 mm to 2393 mm) Circumference	8' (2.4 m) Chain	None	CM-H30-B
		4-1/2" OD x 63" (114.3 mm OD x 1.6 m) 90.64 (41.1) Pipe Mount	CM-H30-63
8" to 60" (203.2 mm to 1524 mm) OD 25" to 188" (635 mm to 4785 mm) Circumference	16' (4.9 m) Chain	None	CM-H60-B
		4-1/2" OD x 63" (114.3 mm OD x 1.6 m) 90.64 (41.1) Pipe Mount	CM-H60-63



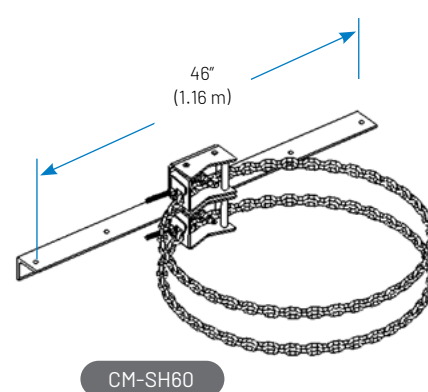
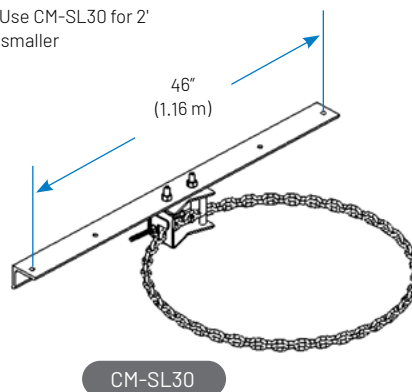
MONOPOLE STRUT/STIFF ARM MOUNTS	
Application:	Chainmount solution for attaching struts on monopoles
Size:	48" (1.2 m) arm
Design:	Chain mounted support arm
Feature:	Adapts strut/stiff arm to monopole
Mounts to:	8" to 60" (203.2 mm to 1524 mm) OD
Material:	Hot dip galvanized steel
Includes:	Arm and chains
Order Separately:	Antenna chain mount and strut/stiff arm



NOTE: Supports up to 1,000 lbs. load at end, or 2,000 lbs. 10" from end

Mounting	Chain	Material ID
8" to 30" (203.2 mm to 711.2 mm) OD 25" to 94.2" (635 mm to 2393 mm) Circumference	Light Duty - Single 8' (2.4 m) Chain	CM-SL30
	Heavy Duty - Double 8' (2.4 m) Chain	CM-SH30
8" to 60" (203.2 mm to 1524 mm) OD 25" to 188" (635 mm to 4785 mm) Circumference	Light Duty - Single 16' (4.9 m) Chain	CM-SL60
	Heavy Duty - Double 16' (4.9 m) Chain	CM-SH60

NOTE: Use CM-SL30 for 2' dish or smaller



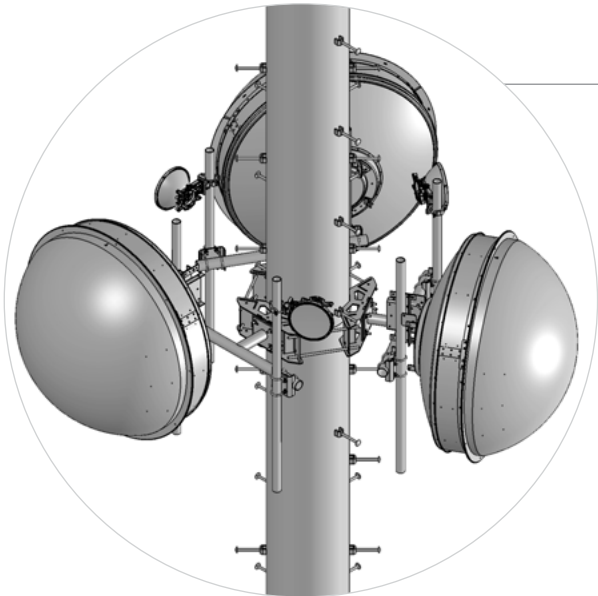
3-SECTOR DUAL PIPE MOUNT KITS

LOW-PROFILE ADJUSTABLE CO-LOCATION KIT

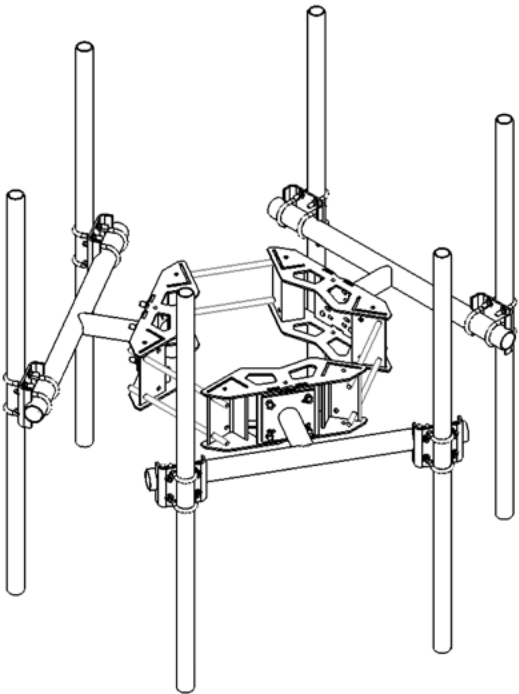
Application:	Co-location kit for monopoles
Size:	57" (1.4 m) face with 48" (1.2 m) separation
Design:	Universal double antenna mount
Feature:	Down tilt capabilities
Mounts to:	12" to 50" (304.8 mm to 1.27 m) OD monopoles
Material:	Hot dip galvanized steel
Includes:	Mount, weldment, hardware
Order Separately:	Available with or without pipe

LOW-PROFILE ADJUSTABLE CO-LOCATION KIT

Mounting	Pipe Mount Size	Pipes Included	Material ID
12" to 50" (304.8 mm to 1.27 m) OD Monopole	2-3/8" OD	None	MC-DPM2M-6-B
		(6) 2-3/8" OD x 72" (60.3 mm OD x 1.8 m)	MC-DPM2M-6-72
		(6) 2-3/8" OD x 96" (60.3 mm OD x 2.4 m)	MC-DPM2M-6-96
		(6) 2-3/8" OD x 126" (60.3 mm OD x 3.2 m)	MC-DPM2M-6-126
	2-7/8" OD	None	MC-DPM3M-6-B
		(6) 2-7/8" OD x 72" (73 mm OD x 1.8 m)	MC-DPM3M-6-72
		(6) 2-7/8" OD x 96" (73 mm OD x 2.4 m)	MC-DPM3M-6-96
		(6) 2-7/8" OD x 126" (73 mm OD x 3.2 m)	MC-DPM3M-6-126
	3-1/2" OD	None	MC-DPM35M-6-B
		(6) 3-1/2" OD x 72" (88.9 mm OD x 1.8 m)	MC-DPM35M-6-72
		(6) 3-1/2" OD x 96" (88.9 mm OD x 2.4 m)	MC-DPM35M-6-96
		(6) 3-1/2" OD x 126" (88.9 mm OD x 3.2 m)	MC-DPM35M-6-126



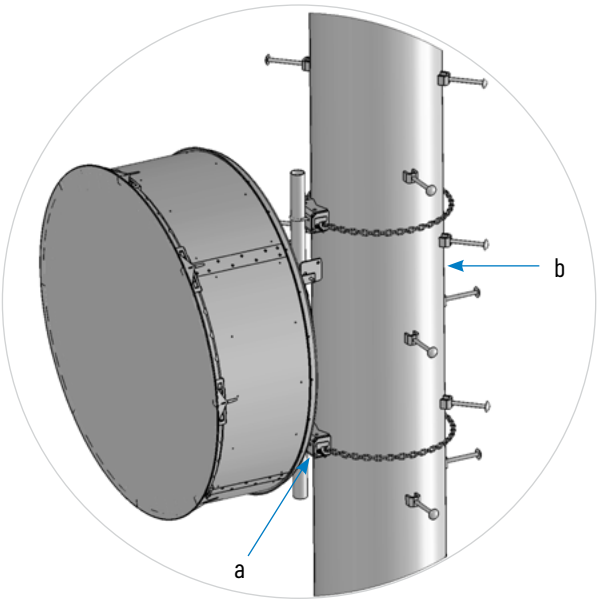
NOTE: Shown with 3' (1 m) microwave antenna



Man Rating: 250 lb vertical man load at 15 mph (BWS)

Wind Rating*: 120 mph (BWS) per latest revision of ANSI/TIA/EIA-222 140 mph 3-second gust, Exposure "D" per FBC, at 150' AGL

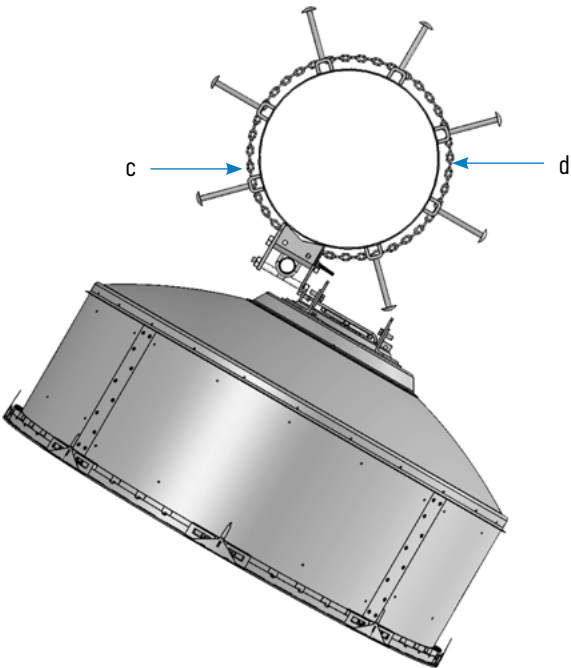
APPLICATION GUIDE



Key	Part Number	Description	Page #
1	CM-30S-72	Low-profile Single Chain Mount Kit	24

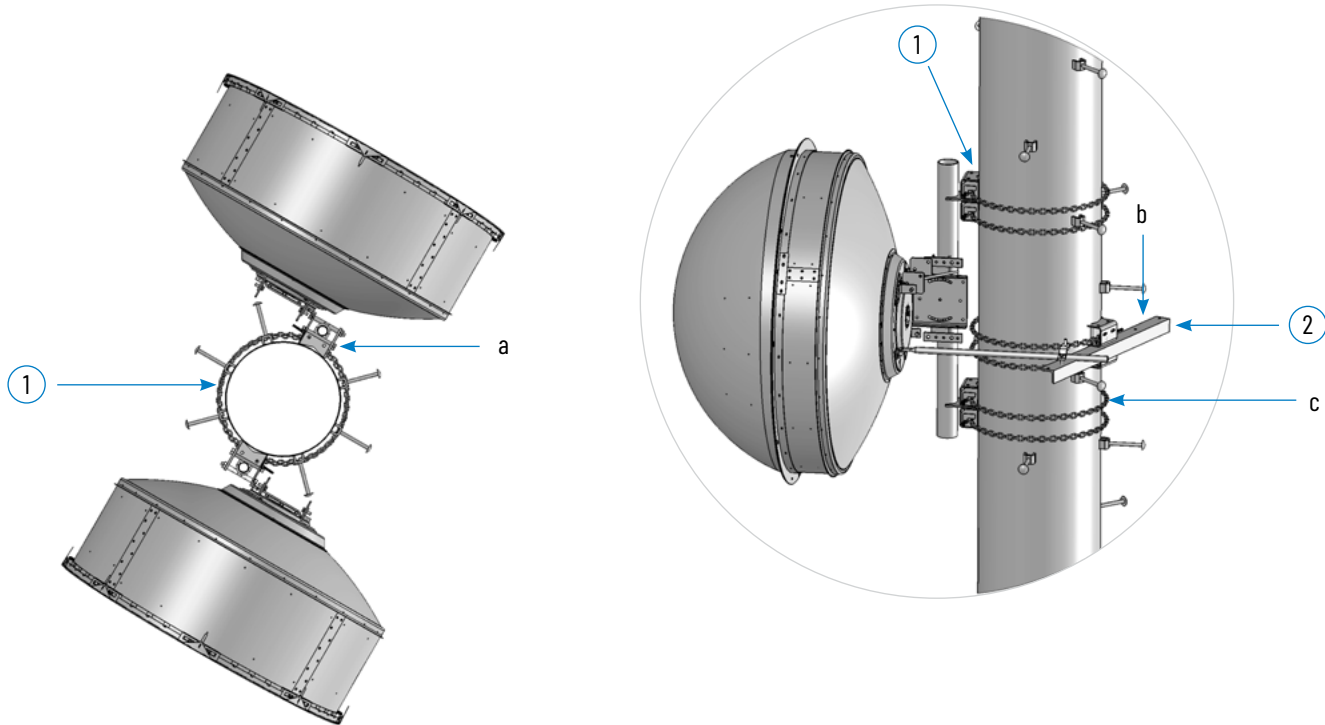
* Shown with ANDREW Antennas

- a. Single point locking adjustment
- b. Mounts to both round and polygon poles
- c. Chain support offers 360° of azimuth adjustability
- d. Low-profile clearance allows for unobstructed climbing



NOTE: It is recommended that the EW line is supported every three feet in the horizontal and within 12" of the connector so there is no stress on the feed horn.

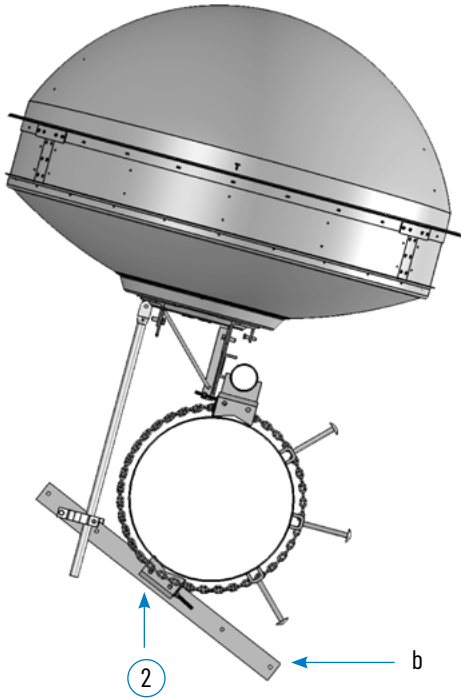
APPLICATION GUIDE



Key	Part Number	Description	Page #
1	CM-H30-63	Heavy Duty Chain Mount Kit	26
2	CM-SH30	Monopole Strut/Stiff Arm Mount Kit	26

* Shown with ANDREW Antennas

- a. Sliding brackets allow for double supports at desired azimuth
- b. Strut/stiff arm mount provides strut support at recommended angle
- c. Dual chain supports for larger antenna





ROOF-TOP MOUNTS

- Tripod Mounts
- Wall Mounts
- Mounting Components
- Customs

FOR OUR FULL ROOFTOP PRODUCT PORTFOLIO, PLEASE VISIT
OUR ROOFTOP MOUNTS SITE OR FOLLOW THE QR CODE:
[ROOFTOP MOUNTS | ANDREW](#)



TRIPOD MOUNTS

UNIVERSAL TRIPOD MOUNTS

Application:	Roof-top mounting for one antenna
Size:	2-7/8" (73 mm), 3-1/2" (88.9 mm), or 4-1/2" (114.3 mm) OD
Design:	Heavy duty tripod mount
Feature:	Interchangeable base unit
Material:	Hot dip galvanized steel
Includes:	Mount, with or without pipe
Order Separately:	Roof sled and pipe



TP-G300-96

NON-PENETRATING ROOF BALLAST SLED FOR TRIPODS

Application:	Non-penetrating solution for TP-G series mounts
Size:	87" (2.2 m) faces
Design:	Converts tripods to anon-penetrating
Feature:	Three ballast trays
Material:	Hot dip galvanized steel
Includes:	Sled only
Order Separately:	Tripod and rubber mats

NOTE: Ballast to be calculated by competent person

TP-G412-72 with MT-416

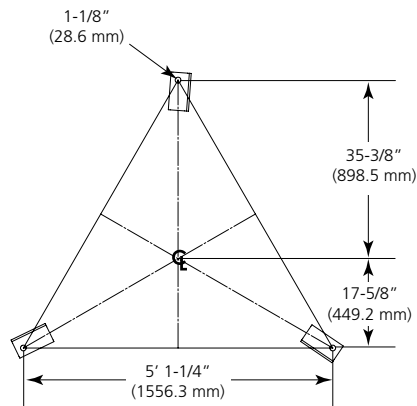


UNIVERSAL TRIPOD MOUNTS

Description	Material ID
Base Only for 2-7/8" or 3-1/2" OD (73 mm or 88.9 mm OD), Pipe Ordered Separately	TP-G300-B
2-7/8" or 3-1/2" OD (73 mm or 88.9 mm OD)	TP-G300-96
2-7/8" OD x 96" (73 mm OD x 2.4 m)	TP-G300-126
2-7/8" OD x 126" (73 mm OD x 3.2 m)	TP-G312-96
3-1/2" OD x 96" (88.9 mm OD x 2.4 m)	TP-G312-126
3-1/2" OD x 126" (88.9 mm OD x 3.2 m)	TP-G412-B
Base Only for 4-1/2" OD (114.3 mm OD), Pipe Ordered Separately	TP-G412-96
4-1/2" OD (114.3 mm OD)	TP-G412-126
4-1/2" OD x 96" (114.3 mm OD x 2.4 m)	TP-G412-150
4-1/2" OD x 126" (114.3 mm OD x 3.2 m)	
4-1/2" OD x 150" (114.3 mm OD x 3.8 m)	

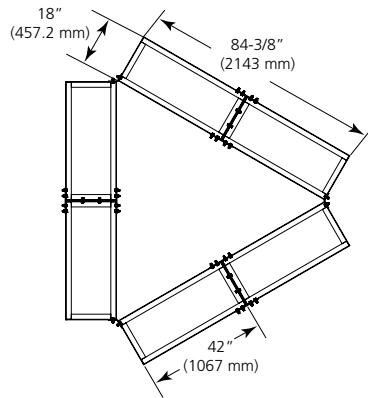
Wind Rating*: 85 mph (BWS) per latest revision of ANSI/TIA/EIA-222 Exposure "C" per UBC, at 100' AGL

* Typical installation of one 6' standard microwave antenna using 4-1/2" pipe mast. See Engineering Data Table for ballast



NON-PENETRATING ROOF BALLAST SLED FOR TRIPODS

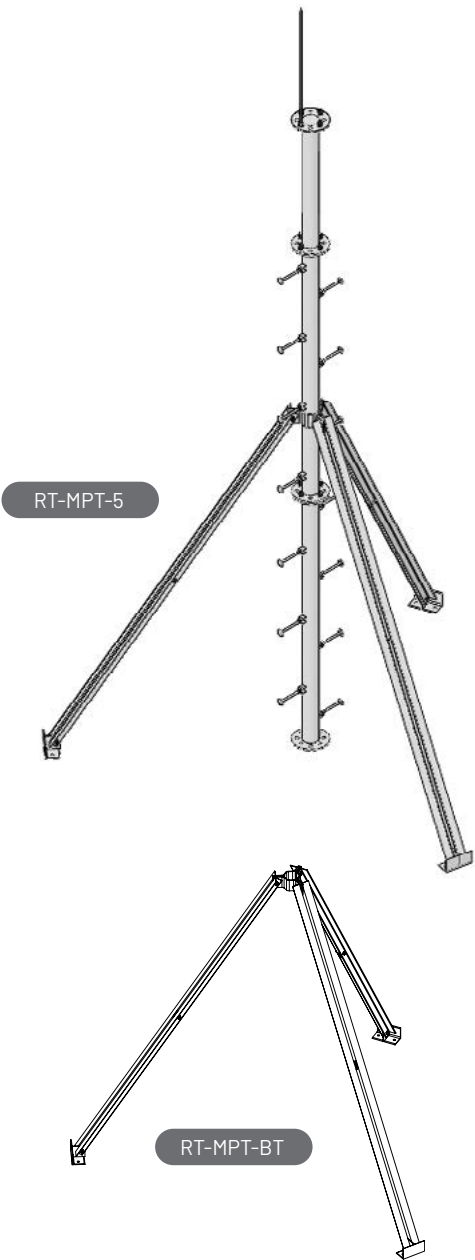
Description	Material ID
Non-penetrating Roof Sled, Tripod Mount Ordered Separately	MT-416
Rubber Mat, 1/2" x 18" x 48" (13 mm x 457 mm x 1219 mm), Six Mats Required for Ballast Tray	MT-F1637



TRIPOD MOUNTS

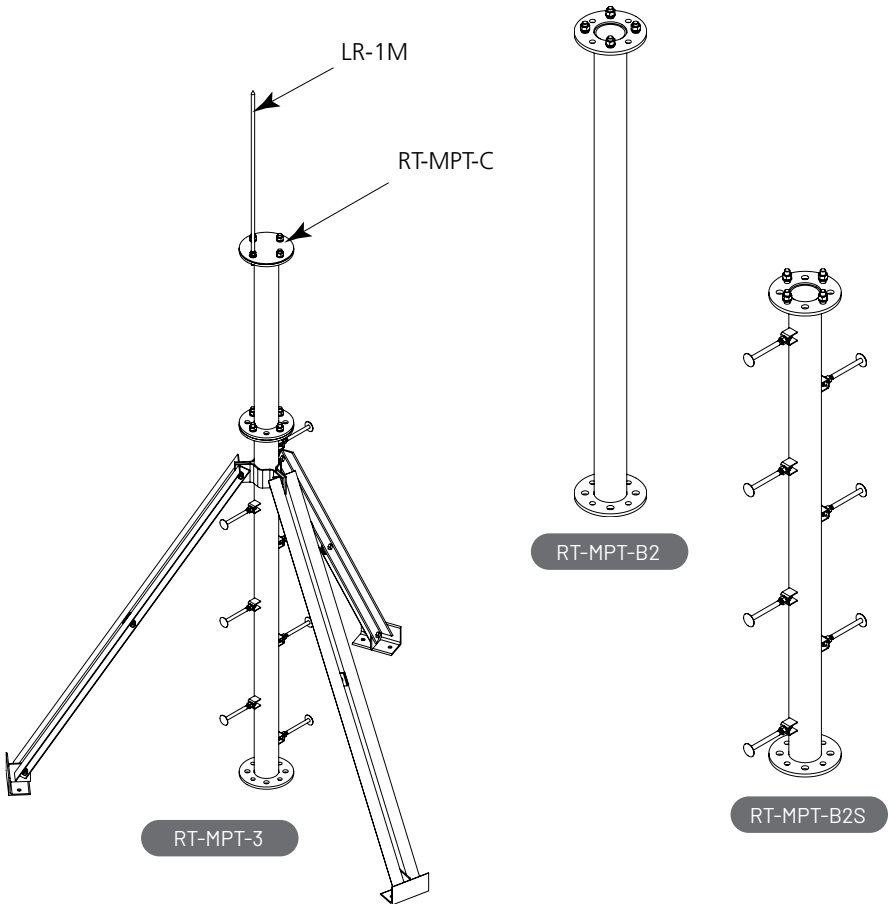
ROOF-TOP MONOPOLE TRIPODS

Application:	Single antenna mount for roof-tops
Design:	Spliced center pole with angle kicker legs
Feature:	Splice vertical post
Mounts to:	Roof-top
Material:	Hot dip galvanized steel
Includes:	Center post, kicker angles, hardware



UNIVERSAL TRIPOD MOUNTS

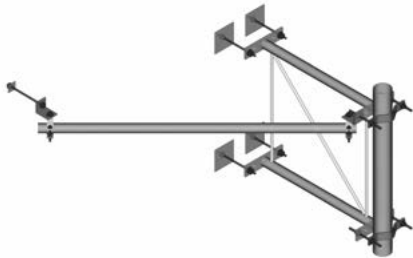
Description	Height	Material ID
Roof-top Monopole Tripod Assembly	3 Meter (9'-9") Mast	RT-MPT-3
	4 Meter (13'-1") Mast	RT-MPT-4
	5 Meter (16'-5") Mast	RT-MPT-5
	6 Meter (19'-8") Mast	RT-MPT-6
	7 Meter (22'-11") Mast	RT-MPT-7
Roof-top Monopole Antenna Section No Step Pegs	39-1/2" (1.0 m)	RT-MPT-B1
	78-1/2" (2.0 m)	RT-MPT-B2
Roof-top Monopole Antenna Section With Step Pegs	78-1/2" (2.0 m)	RT-MPT-B2S
Roof-Top Monopole Tripod Kit	For 157" (4.0 m) to 276-1/2" (7.0 m) Tall Monopole	RT-MPT-BT
	For 78-1/2" (2.0 m) Tall Monopole	RT-MPT-BT3
Roof-Top Monopole Section Cover	N/A	RT-MPT-C
Lightning Rod	39-1/2" (1.0 m)	LR-1M



WALL MOUNTS

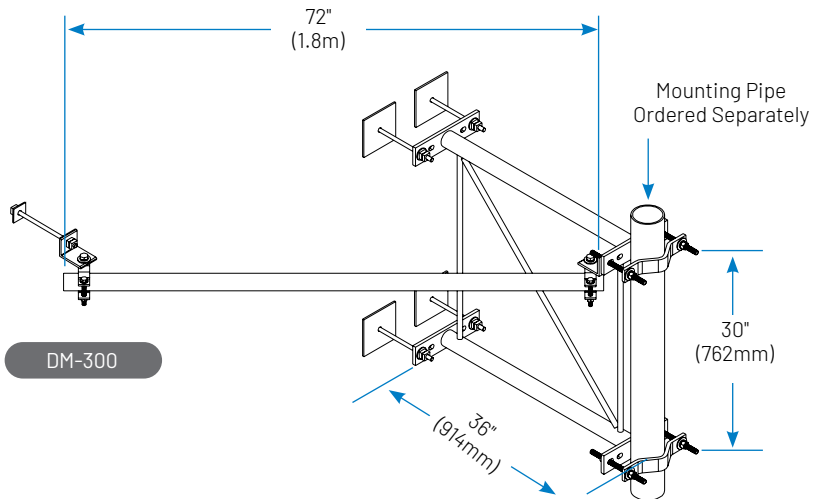
STAND-OFF WALL MOUNT

Application:	3' Stand-off for wall mounting antennas
Size:	36" (914.4 mm) stand-off
Design:	Welded stand-off mount
Feature:	Heavy duty for microwave antennas
Mounts to:	Walls
Material:	Hot dip galvanized steel
Includes:	Bracket, strut/stiff-arm, and wall mount hardware
Order Separately:	3-1/2" (88.9 mm) or 4-1/2" (114.3 mm) OD pipe



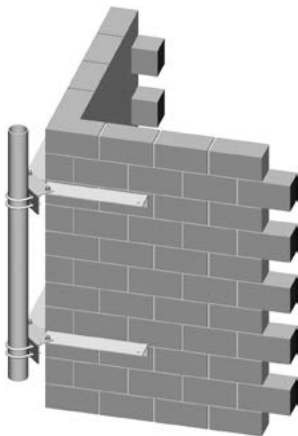
STAND-OFF WALL MOUNT

Description	Pipes Included	Stand-off	Stiff Arm/Strut	Material ID
Stand-off Wall Mount for Solid & Hollow Walls	None - Pipe Ordered Separately	36" (914 mm),	72" (1.8 m) Stiff Arm	DM-300



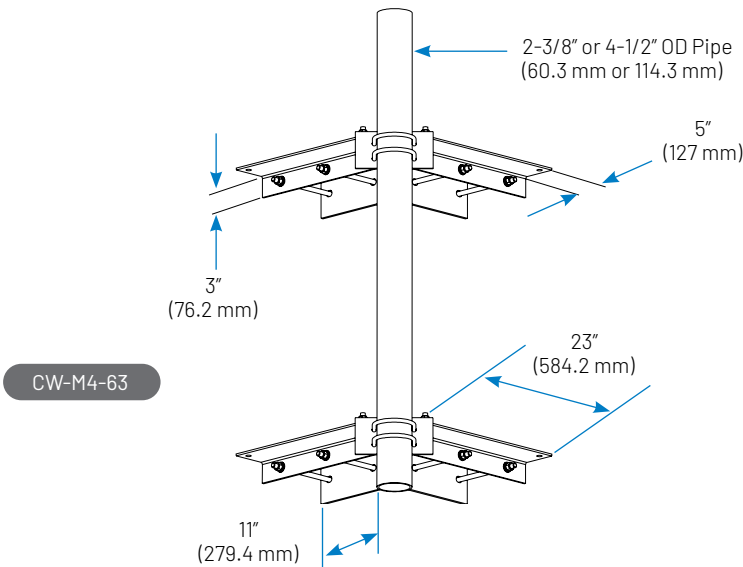
CORNER WALL MOUNTS

Application:	Antenna mounting for corners of buildings
Design:	V-shaped corner mount
Feature:	Adjustable clamp spacing
Mounts to:	Wall corners
Material:	Hot dip galvanized steel
Includes:	Two brackets, pipe mount, and wall mount hardware



CORNER WALL MOUNT

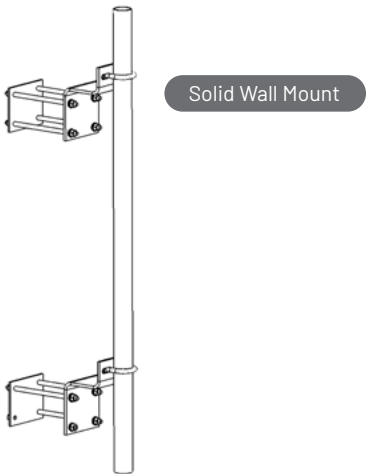
Description	Pipes Included	Material ID
Corner Wall Mount	2-3/8" (60.3 mm) OD x 63" (1.6 m) Pipe	CW-M2-63
	2-3/8" (60.3 mm) OD x 96" (2.4 m) Pipe	CW-M2-96
	4-1/2" (114.3 mm) OD x 63" (1.6 m) Pipe	CW-M4-63
	4-1/2" (114.3 mm) OD x 96" (2.4 m) Pipe	CW-M4-96



WALL MOUNTS

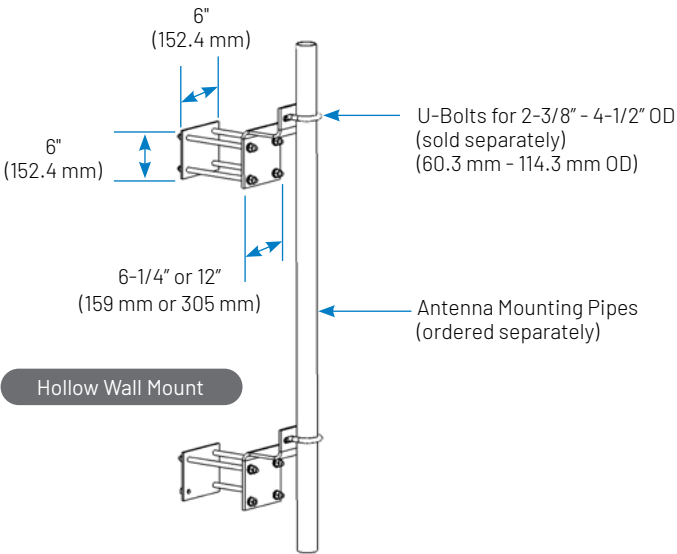
ADJUSTABLE WALL MOUNTS

Application:	Mounting antennas on hollow or solid walls
Size:	12" (304.8 mm) Square plate, 6-1/4" (158.75 mm) or 12" (304.8 mm) deep
Design:	Welded dual brackets
Feature:	Variable spacing flexibility
Mounts to:	Versions for hollow or solid walls
Material:	Hot dip galvanized steel
Includes:	Two wall brackets and backing plates or anchors
Order Separately:	U-bolts and 2-3/8" through 4-1/2" OD (60.3 mm through 114.3 mm) pipe



MICROWAVE MOUNTING COMPONENTS

Description	Material ID
Adjustable Wall Mounts, 6" (152.4 mm) Stand-off	
For Hollow Walls, Includes Backing Plates, Kit of 2	MT-221
For Solid Walls, Includes Wall Anchors, Kit of 2	MT-222
Adjustable Wall Mounts, 12" (305 mm) Stand-off	
For Hollow Walls, Includes Backing Plates, Kit of 2	MT-221L
For Solid Walls, Includes Wall Anchors, Kit of 2	MT-222L
Optional Backing Plate	
Backing Plate Kit, 12" x 12" (305 mm x 305 mm)	MT-223



MOUNTING COMPONENTS



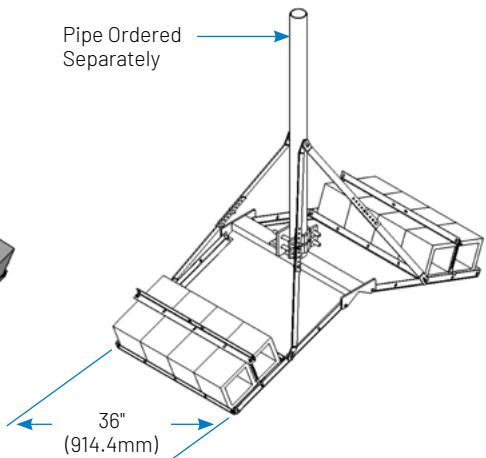
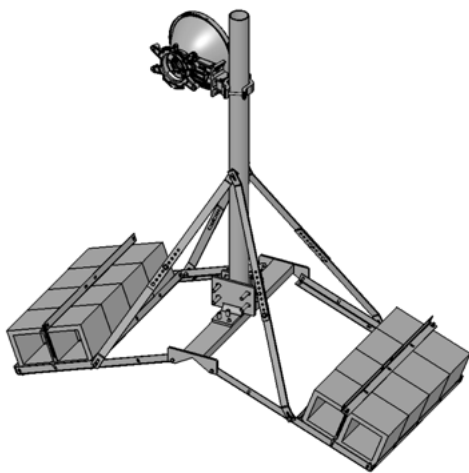
MICROWAVE MOUNTING COMPONENTS

Description	Material ID
Roof-top Microwave Dish Ballast Mount System	
Three 4.5" OD X 8' Supports with 3.5" OD Strut Support Member	RF-MW8-B

NON-PENETRATING ROOF-TOP PEAK FRAMES

Application:	Mounting of antennas on roof-top peaks
Size:	36" (914.4 mm) Wide ballast trays
Design:	Non-penetrating design
Feature:	Accepts 2-3/8" to 4-1/2" OD (60.3 mm to 114.3 mm) antenna mounting pipes
Mounts to:	Peaked roofs
Material:	Hot dip galvanized steel
Includes:	Ballast tray, tie down angles, mount, hardware
Order Separately:	Antenna mounting pipes

NOTE: Ballast to be calculated by competent person



ROOFTOP PEAK FRAME

Description	Pipes Included	Material ID
Rooftop Peak Frame	None - Pipe Ordered Separately	RT-PM-B



CUBE MOUNT

Description	Pipes Included	Material ID
Roof Top Cube Mount Base Kit	None - Pipe Ordered Separately	RT-CUBE-MBASE



WAVEGUIDE BRIDGE & CABLE SUPPORT

- Coaxial support components
- Waveguide/Ice Bridge
- Cable ladder kits

FOR OUR FULL PRODUCT PORTFOLIO, PLEASE VISIT OUR
WAVEGUIDE/ICE BRIDGE SITE OR FOLLOW THE QR CODE:

[WAVEGUIDE/ICE BRIDGE | ANDREW](#)



FOR OUR FULL CABLE SUPPORT PRODUCT PORTFOLIO, PLEASE VISIT
OUR CABLE SUPPORT BRACKETS SITE OR FOLLOW THE QR CODE:

[CABLE SUPPORT BRACKETS | ANDREW](#)



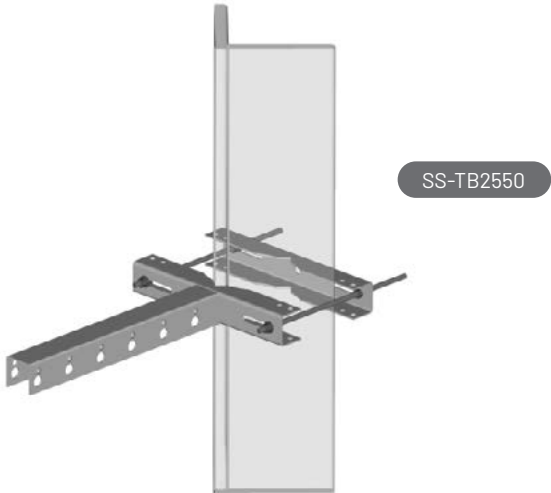
COAXIAL SUPPORT COMPONENTS

STAR SUPPORT BRACKETS

Application:	Coaxial support on round or angle members
Size:	3/4" (19.1 mm) and 7/16" (11.1 mm) holes
Design:	Bolt together stand-off mount
Feature:	Six or twelve hole solution
Mounts to:	Round and angle members
Material:	Hot dip galvanized steel
Includes:	Bracket

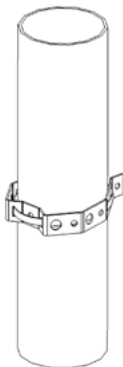
STAR SUPPORT TEE BRACKET

Description	Material ID
1-1/2" to 5-9/16" OD (38.1 mm to 141.3 mm OD) Round Members and 2-1/2" to 5" (50.8 mm to 127 mm) Angle Members	SS-TB2550
4" to 10-3/4" OD (101.6 mm to 273.1 mm OD) Round Members and 4" to 8" (101.6 mm to 203.2 mm) Angle Members	SS-TB6080



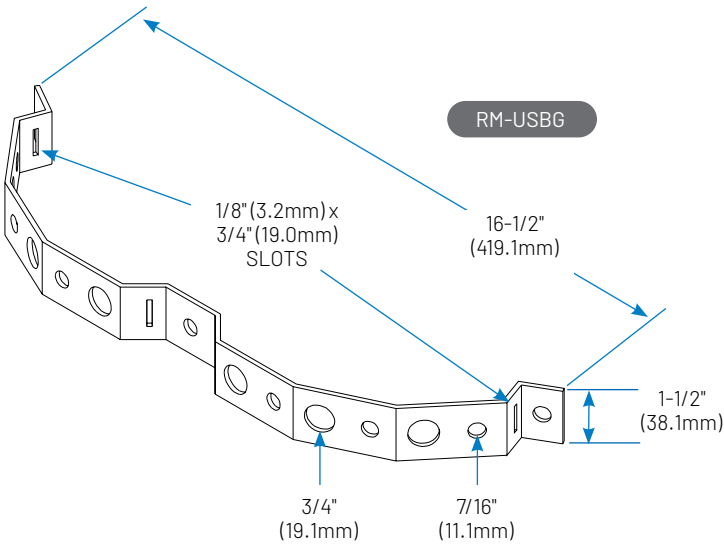
UNIVERSAL ROUND MEMBER SUPPORT BRACKET

Application:	Coaxial support for monopoles
Size:	3/4" (19.1 mm) and 7/16" (11.1 mm) holes
Design:	Coaxial cable support for round members
Feature:	Ideal for co-location
Mounts to:	Round members
Material:	Hot dip galvanized steel
Includes:	Bracket
Order Separately:	Banding



UNIVERSAL ROUND MEMBER SUPPORT BRACKET

Description	Material ID
Universal Round Member Support Bracket for 6 Runs, Kit of 10	RM-USBG



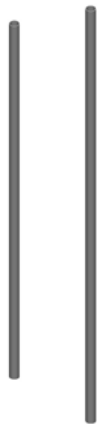
WAVEGUIDE/ICE BRIDGE

ORDERING INFORMATION

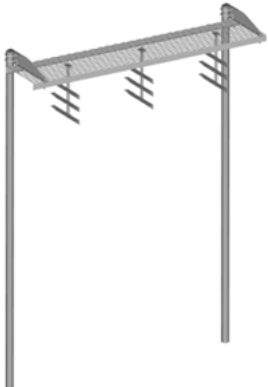
Base Shoe



Direct Burial Pipe Column



Waveguide Bridge Kits

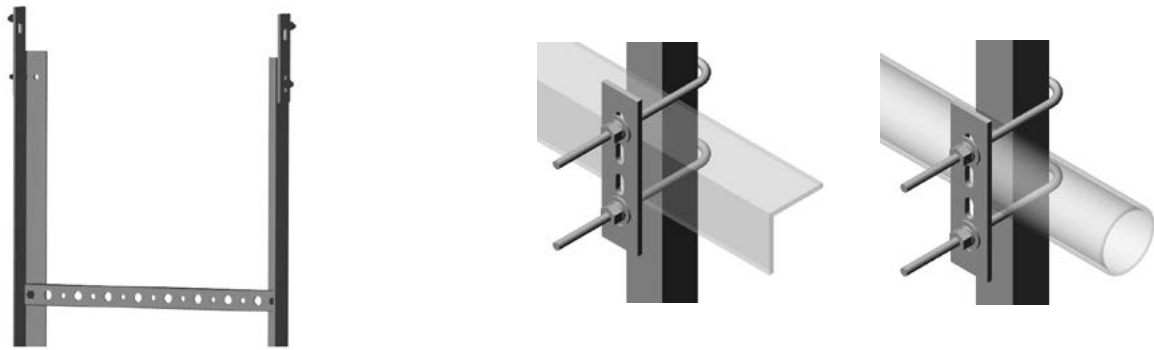


DESCRIPTION	PART NUMBER
Base Shoe	
For 3 1/2" OD Pipe, Hardware Included	WB-BS
Direct Burial Pipe Column	
3 1/2" OD x 13' 4"	MF-130
Waveguide Bridge Support Brackets	
24" Wide for 3 1/2" OD Legs	WB-LB24-3
Safety Grated Waveguide Bridge Kits	
24" x 10' Bridge with (2) 15' 4" Direct Burial Posts	WB-K210-B15
24" x 10' Bridge with (2) 13' 4" Direct Burial Posts	WB-K210-B
24" x 10' Bridge with (4) 13' 4" Direct Burial Posts	WB-K410-B
24" x 10' Bridge with (2) 10' 6" Base Shoe Posts	WB-K210-S
Heavy Duty 12" x 10' Bridge with (2) 13' 4" Direct Burial Posts	WB-K110-B-HD
Heavy Duty 12" x 10' Bridge with (2) 10' 6" Base Shoe Posts	WB-K110-S-HD

CABLE LADDER KITS

ORDERING INFORMATION

Cable Ladder Kits



DESCRIPTION	PART NUMBER
Cable Ladder Kits	
20" Wide, Six Hole Rung, 10 feet	CL-0610-U
20" Wide, Six Hole Rung, 20 feet	CL-0620-U
30" Wide, Nine Hole Rung, 10 feet	CL-0910-U
30" Wide, Nine Hole Rung, 20 feet	CL-0920-U
38" Wide, Twelve Hole Rung, 10 feet	CL-1210-U
38" Wide, Twelve Hole Rung, 20 feet	CL-1220-U



SITE RELATED

- Microwave ice shields
- Microwave shield mounts
- Telco Racks/H-Frames
- Equipment platforms
- Ice and rain Canopies
- Handrail and step kits

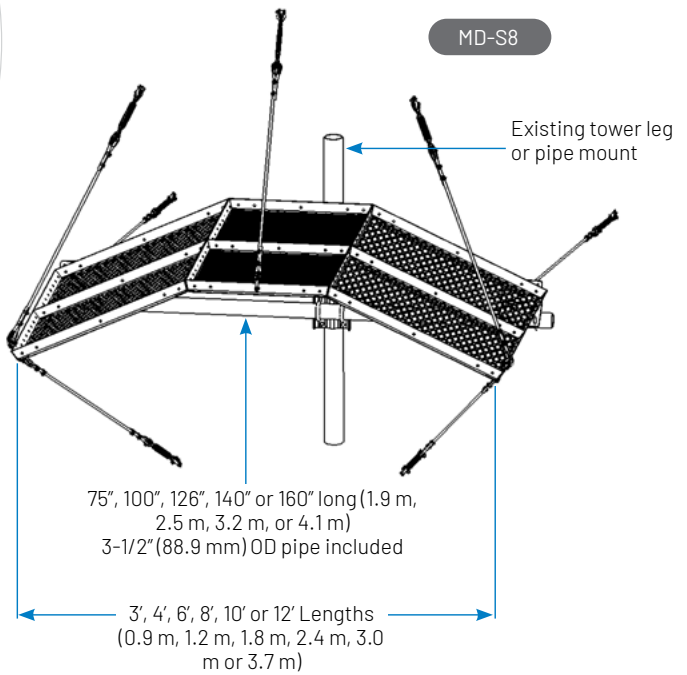
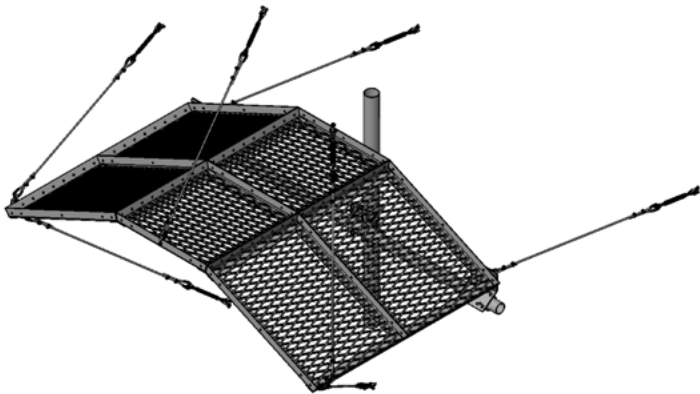
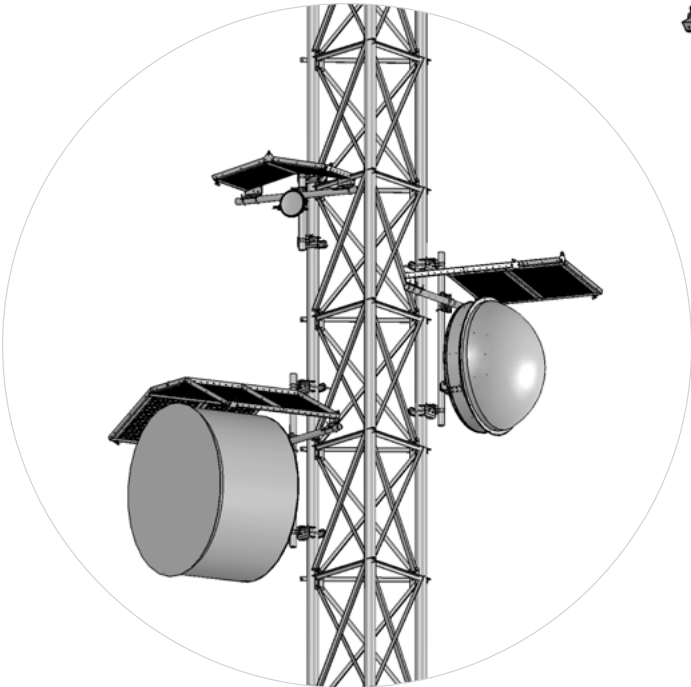
MICROWAVE ICE SHIELDS

MICROWAVE ANTENNA ICE SHIELD

Application:	Protection microwave antenna from falling debris
Design:	Heavy duty
Feature:	Bolt together, light weight panels
Mounts to:	4-1/2" (114.3 mm) OD pipe
Material:	Hot dip galvanized steel
Includes:	Ice shield and all attachment hardware
Order Separately:	Pipe mount

MICROWAVE ANTENNA ICE SHIELD

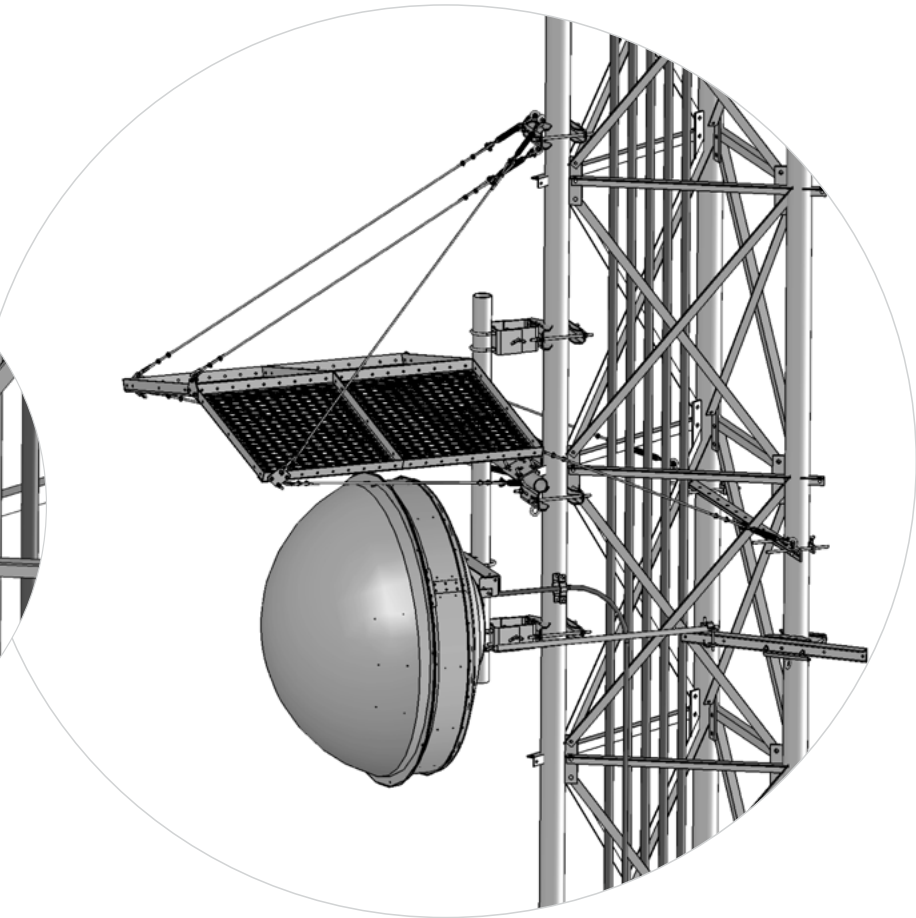
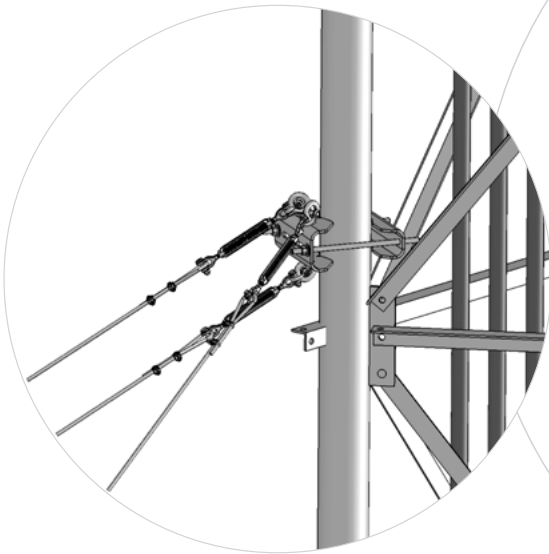
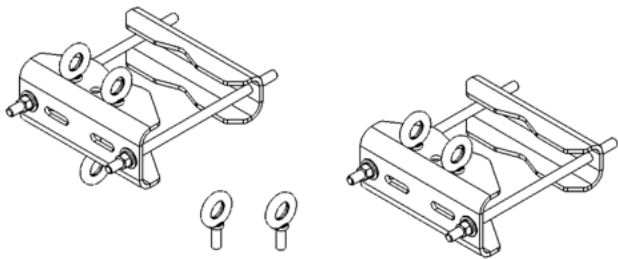
Description	Antenna Size	Material ID
Microwave Antenna Ice Shield for mounting to 4-1/2" OD Pipe	3' (914.4 mm) Antenna	MD-S3
	4' (1.21 m) Antenna	MD-S4
	6' (1.8 m) Antenna	MD-S6
	8' (2.4 m) Antenna	MD-S8
	10' (3 m) Antenna	MD-S10
	12' (3.6 m) Antenna	MD-S12



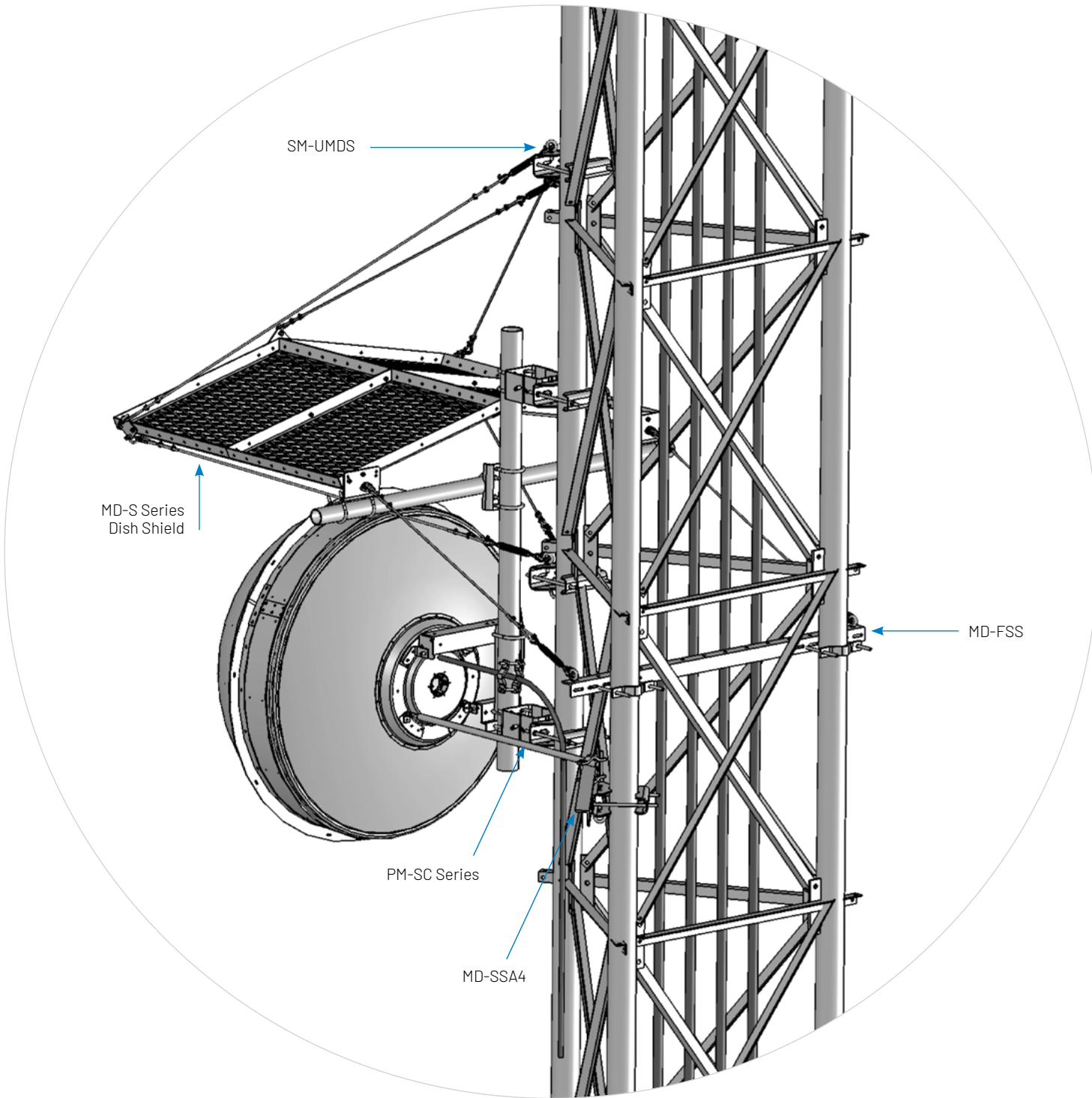
MICROWAVE SHIELD MOUNTS

MICROWAVE SHIELD MOUNTS	
Application:	Lattice towers
Design:	Saddle mount and eye bolts
Feature:	Two piece formed saddles
Mounts to:	Straight or tapered legs up to 8-5/8" OD (219.1 mm OD), 8" (203.2 mm) angle 60°, or 6" (152.4 mm) angle 90°
Material:	Hot dip galvanized steel
Includes:	Universal saddle mount, eye bolts
Order Separately:	Microwave dish shield

MICROWAVE SHIELD MOUNTS	
Description	Material ID
Universal Saddle Mount for Attaching MD-S Guy Wire Supports. Includes Seven Eye Bolts	SM-UMDS
5/8" x 1-3/4" Shouldered Eye Bolt	GB-05SB



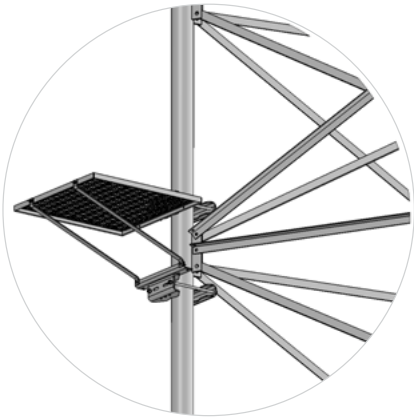
MICROWAVE SHIELD MOUNTS



MICROWAVE ICE SHIELDS

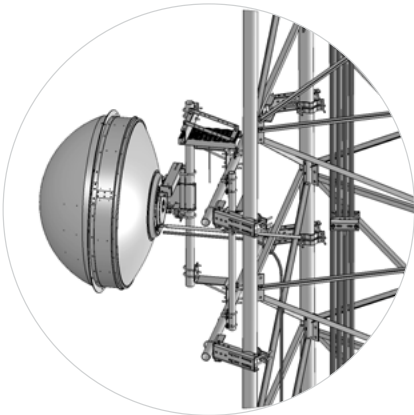
SQUARE ANTENNA ICE SHIELDS	
Application:	Protection from falling debris
Design:	Heavy duty
Feature:	Protects antenna from falling ice
Mounts to:	4-1/2" (114.3 mm) OD pipe
Material:	Hot dip galvanized steel
Includes:	Ice shield, mounting hardware
Order Separately:	4-1/2" (114.3 mm) OD pipe mount

SQUARE ANTENNA ICE SHIELDS		
Description	Shield Size	Material ID
Square Antenna Ice Shield for mounting to 4-1/2" OD Pipe	2' (609.5 mm) Square	MD-SQ2
	3' (914.4 mm) Square	MD-SQ3
	4' (1.21 m) Square	MD-SQ4

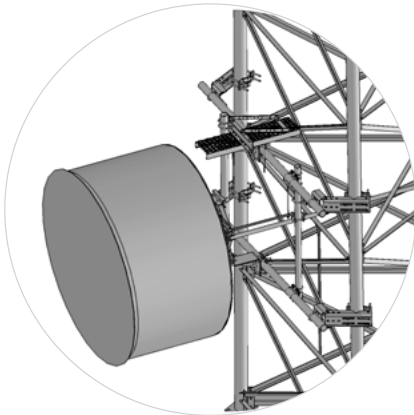


MICROWAVE DISH WAVEGUIDE SHIELDS	
Application:	Waveguide protection from falling debris
Size:	Three versions (see table)
Design:	Support and protection for waveguide
Feature:	Protects waveguide from falling debris
Mounts to:	4-1/2" (114.3 mm) OD pipe
Material:	Hot dip galvanized steel
Includes:	Ice shield and all attachment hardware
Order Separately:	Pipe mount

SQUARE ANTENNA ICE SHIELDS		
Description	Shield Size	Material ID
Waveguide Ice Shield for mounting to 4-1/2" OD Pipe	12" x 24" (304.8 mm x 610 mm) Shield	MD-IS2
	12" x 48" (304.8 mm x 1.2 m) Shield	MD-IS4
	24" (610 mm) Angle	MD-WS



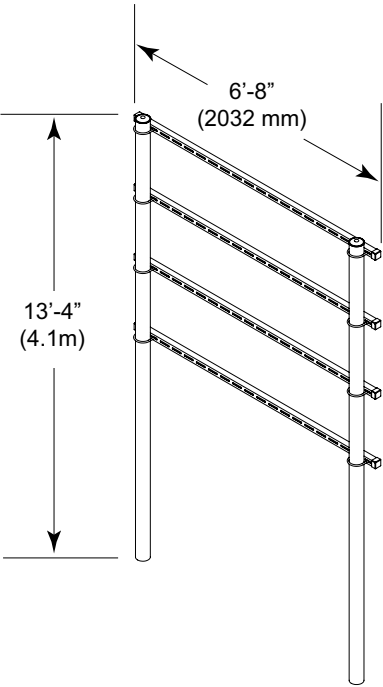
MD-IS2



MD-IS4

TELCO RACKS/H-FRAMES

POWER TELCO RACKS	
Application:	Rack for mounting telco racks
Design:	Two posts, unistrut
Feature:	Burial posts or Base Shoes
Material:	Hot dip galvanized steel
Includes:	Posts, horizontal struts, mounting hardware



POWER TELCO RACKS/H-FRAMES		
Description	Number of Rungs	Material ID
With 13'-4" (4.1 m) Burial Posts	Two 80" (2 m) Rungs	PT-R102
	Three 80" (2 m) Rungs	PT-R103
	Four 80" (2 m) Rungs	PT-R104
10' x 10' with Base Shoes	Twelve 10' (3 m) Rungs	MTC3742
6' x 6' with Base Shoes	Five 5' (1.5 m) Rungs	MTC4045HF65
5' x 6' with Base Shoes		MTC4045HF55
5' x 6' with Base Shoes	Eight 5' (1.5 m) Rungs	PT-S-0605-08
5' x 5' with Base Shoes		PT-S-0505-08
5' x 7' with Base Shoes & 5' of WGB	Six 5' (1.5 m) Rungs	RR-HFBS5
5' x 10' with Base Shoes & 5' of WGB		RR-HFBP5

PT-R104



EQUIPMENT PLATFORMS

ANDREW equipment platforms are delivered unassembled and erected on-site. They are designed to assemble quickly, easily and without the need for a cement pad. No permitting, no need for cement forms or rebar. No wasted time spent waiting for the pad to cure. Should cabling beneath the platform need to be moved, there is no need to dig up the pad and re-pour— simply re-route as needed.

The base equipment platform features grating, platform and all the hardware needed. A variety of options enable you to tailor the platform size, footings, canopy type and more to the requirements of the job. Additional add-ons—like power telco racks, handrails, steps and climbing ladders—let you create a flexible platform solution that can adapt to the specific needs of each site as the network and site requirements evolve.

To order, specify your desired length and width (in 2-ft increments), then select footing type per charts below:

EQ-P

1

2

3



STEP 1

PLATFORM WIDTH (2-FT. INCREMENTS, 26 FT. MAX)		
1	04	4 ft. (Minimum width)
	26	26 ft. (Maximum width)

STEP 2

PLATFORM LENGTH (2-FT. INCREMENTS, 26 FT. MAX)		
2	04	4 ft. (Minimum width)
	26	26 ft. (Maximum width)

STEP 3

PLATFORM SUPPORT/FEET OPTION		
3	B	No feet, base platform only
	AL	Adjustable legs with side leg jack
	DF	Weight disbursement feet

**Steps ordered separately to match elevation*

ICE AND RAIN COMPONENTS

Specifying the right ice or rain canopy is even easier. Use the format below to tell us the length and width you need and the type of footing you prefer.

1

2

3

4

STEP 1

CANOPY TYPE		
1	IC	Ice Canopy
	RC	Rain Canopy

STEP 2

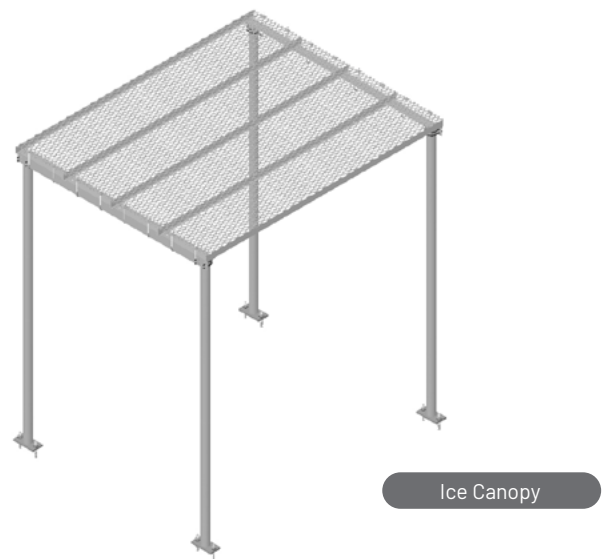
CANOPY LENGTH		
2	06	6 ft.
	08	8 ft.
	10	10 ft.

STEP 3

CANOPY WIDTH		
3	10	10 ft.
	12	12 ft.
	15	15 ft.

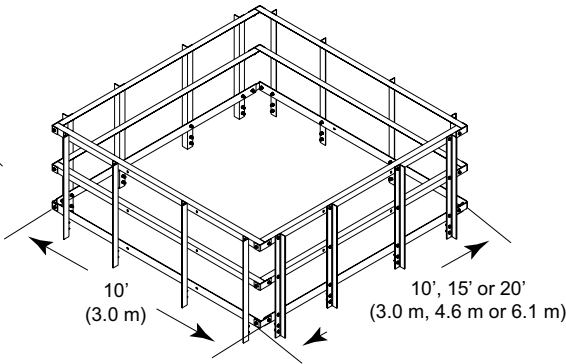
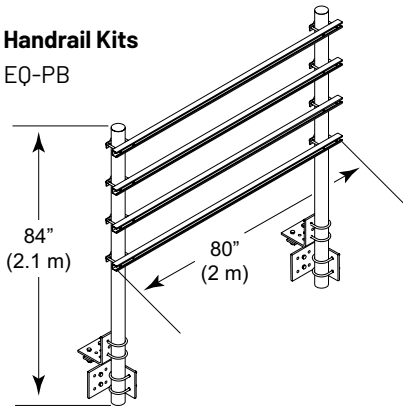
STEP 4

CANOPY FOOTING		
4	B	Direct burial posts, 13 ft. 4 in. tall
	S	Base shoe pipes 10.5 ft. tall



HANDRAIL AND STEP KITS

ORDERING INFORMATION



DESCRIPTION	PART NUMBER
Handrail Kit for EQ-P Series Platforms	
For 10' x 10' (3 m x 3 m) Platform	EQ-HR1010
For 10' x 15' (3 m x 4.6 m) Platform	EQ-HR1015
For 10' x 20' (3 m x 6.1 m) Platform	EQ-HR1020
Ladder for EQ-P Series Platforms	
Climbing Ladder for EQ-P Series Platforms	EQ-LD
Step Kits for EQ-P Series Platforms	
Single Platform Step for EQ-P Series Platforms	EQ-ST5
Double Step Kit for EQ-P Series Platforms	EQ-STEP-2
Triple Step Kit for EQ-P Series Platforms	EQ-STEP-3
Four Step Kit for EQ-P Series Platforms	EQ-STEP-4
Five Step Kit for EQ-P Series Platforms	EQ-STEP-5
Six Step Kit for EQ-P Series Platforms	EQ-STEP-6
Power Telco Rack Kit for EQ-P Series Platforms	
40" x 84" Round Post H-Frame with 4 Rungs, Mounts to EQ-P Platforms	EQ-PPC
Post Bracket Kit for Waveguide Bridge Attachment to EQ-P Series Platforms	
Mounts 3-1/2" (88.9 mm) OD Pipe	EQ-PB
8' x 8' H-Frame with Square Posts & 4 Rungs, mounts to EQ-P Platforms	MTC3983



PIPE DIMENSIONS

Pipe Size	OD (Inches)	OD (mm)
1/2"	0.84	21.34
3/4"	1.05	26.67
1"	1.32	33.40
1-1/4"	1.66	42.16
1-1/2"	1.90	48.26
2"	2.38	60.33
2-1/2"	2.88	73.03
3"	3.50	88.90
3-1/2"	4.00	101.60
4"	4.50	114.30
5"	5.56	141.30
6"	6.63	168.30
8"	8.63	219.08



STEEL THICKNESSES

Gage	Thickness (Inches)	Thickness (mm)
10	0.1345	3.416
11	0.1196	3.038
12	0.1046	2.657
13	0.0897	2.278
14	0.0747	1.897
15	0.0673	1.709
16	0.0598	1.519



AWG WIRE SIZES

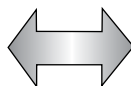
AWG Size	Stranded, OD (overall)		Solid, OD	
	Inch	Millimeter	Inch	Millimeter
4/0	0.528	13.41	0.460	11.68
2/0	0.419	10.64	0.409	10.39
1/0	0.373	9.47	0.324	8.23
2	0.292	7.42	0.257	6.53
4	0.232	5.88	0.204	5.18
6	0.184	4.66	0.162	4.11
8	0.146	3.70	0.128	3.25
10	0.116	2.94	0.102	2.59



FRACTION/DECIMAL/METRIC CHART

Inches Fraction	Inches Decimal	Millimeters
1/16	0.0625	1.6
1/8	0.1250	3.2
3/16	0.1875	4.8
1/4	0.2500	6.4
5/16	0.3125	7.9
3/8	0.3750	9.5
7/16	0.4375	11.1
1/2	0.5000	12.7
9/16	0.5625	14.3
5/8	0.6250	15.9
11/16	0.6875	17.5
3/4	0.7500	19.1
13/16	0.8125	20.6
7/8	0.8750	22.2
15/16	0.9375	23.8
1	1.0000	25.4

NOTE: Not applicable to coaxial cables



CONVERSION FACTORS

Convert From	Convert To	Multiply By
Length		
foot (ft)	meter (m)	0.3048
inch (in)	meter (m)	0.0254
inch (in)	centimeter (cm)	2.5400
meter (m)	foot (ft)	3.2808
meter (m)	inch (in)	39.3700
centimeter (cm)	inch (in)	0.3937
millimeter (mm)	inch (in)	0.0393
Area		
square foot (ft ²)	square meter (m ²)	0.0929
square meter (m ²)	square foot (ft ²)	10.7639
Circle		
radius	diameter	2.0000
diameter	radius	0.5000
diameter	circumference	3.1416
radius	circumference	6.2832
Weight		
pound (lb)	kilogram (kg)	0.4536
kilogram (kg)	pound (lb)	2.2046

Since 1937, ANDREW, an Amphenol company, has driven the evolution of wireless technology. Trusted by mobile network operators and enterprises globally, we work closely with our customers to deliver innovative solutions that enhance connectivity experiences both outdoors and indoors. Our dedicated global team is committed to advancing the industry, fueled by the vision that a better-connected future is possible.



[ANDREW.COM](https://www.andrew.com)

Visit our website or contact your local ANDREW representative for more information.

©2025 ANDREW, an Amphenol company. All rights reserved. Amphenol and ANDREW are registered trademarks of Amphenol and/or its affiliates in the U.S. and other countries. All product names, trademarks and registered trademarks are property of their respective owners. CO-119635.1-EN (08/25)